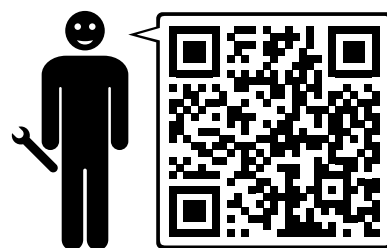




Kidgoo1 – Q8000A-LV / Kidgoo1 Sport Q8000-S-LV
Kidgoo2 – Q9000A-LV / Kidgoo2 Sport Q9000-S-LV



This product fulfils all safety requirements of the European standard for bicycles and bicycle trailers (DIN EN 15918).



Certificates

The *Kidgoo* has been tested and approved in accordance with the European Safety Standard EN 15918. It also fulfils all emissions limit values laid down in accordance with Part 3 of the toy safety standard EN 71.

Das bietet Qeridoo:

- Hohe Sicherheit
- Einfache Bedienung und Handhabung
- Wertige Materialien und Verarbeitung
- Umfangreiches Zubehör
- Gutes Preis-Leistungsverhältnis



Qualitätssicherung

Qualitätssicherung
ausgeführt durch Qeridoo
Qualitätsmanagement



Selbstverständlich getestet und anerkannt nach der europäischen Sicherheitsnorm EN 15918:2011+A1:2013



Schadstoffgeprüft

CENTRE OF TESTING
SERVICE INTERNATIONAL

Test Report Number
CNB3151209-05787-C
CNB3151217-05914-C
CNB3160120-00217-C

Schadstoffgeprüfte Materialien
- TPU (Fenster)
- EVA (Plastikteile)
- 1680D Stoff, 600D, 900D
(Bezug, Verdeck, Gurte)

Berücksichtigte Normen
European Standard EN 71-3:2013+A1:2014
US EPA 3052:1996, US EPA 3050B:1996,
US EPA 3060A:1996, US EPA 3550C:2007,
US EPA 3540C:1996, ISO 17353:2004,
BS EN 14582:2007, EN 14372:2004

CTS International
Centre of Testing Service

Documentation



The statements in this documentation are not to be interpreted as an assurance of particular product properties. Despite the greatest care being taken to avoid technical inaccuracies or omissions, the possibility of these arising cannot be entirely excluded. When necessary, individual items of information can be changed quickly and without special notification.

This documentation can be ordered from Qeridoo GmbH in other languages, or is available for download on our website if already available.

Visit us at: www.qeridoo.de

Copyright

All rights to the documentation remain with Qeridoo GmbH.

Texts, values and illustrations may not be reproduced, distributed, used for competitive purposes or passed on to others. If other product names are used in this documentation, these must normally be regarded as registered trademarks of the respective manufacturer.



get on track

Contents

Introduction	4	Operating the parking brake at the push handle *	28
Proper use	4	Adjusting the push handle	29
Performance limits	4	Setting the mode	29
Notes on the user manual	5	Adjusting the buggy wheel	30
Safety instructions	6	Insert tow bar	30
Users	6	Using the pennant	30
Conditions of use	6	Folding up the push handle	30
Passengers	7	Attaching the hand strap	30
Towing vehicle (Trailer mode)	7	Safety strap with bungee effect (inline skating)	31
Maintenance and storage	7	Putting on the 5-point safety harness	31
Cycling with a trailer	8	Securing the load	31
Additional lanes	8	Loading the baggage	31
Additional weight	8	Adjusting the safety harnesses (<i>Kidgoo2</i>)	31
Defensive riding	8	Embarking the children	32
Product overview	9	Strapping in children	33
Scope of delivery	9	Checking the weight distribution and tow bar load	33
Components and control elements	10	Connecting the trailer to a bicycle	34
Accessories	12	Using the comfort functions	35
Assembly	14	Using the climate functions	35
Unfolding the cabin	14	Adjusting the suspension	37
Installing wheel axle and push handle	15	Storage	38
Securing the wheel axle	15	Care and maintenance	39
Cover leaf suspensions	15	Care	39
Fitting the wheel guard	16	After every use	39
Mounting the push handle	16	After use in harsh weather conditions	39
Relocate brake cable	17	When not in use	39
Inserting the wheels	18	Maintenance intervals	40
Tightening the backrest	18	Before every ride	40
Inserting the pennant	19	Monthly (or every 200 km)	41
Optional assembly steps	19	Semi-annually (or every 500 km)	41
Installing the buggy wheel	19	Every three years (or every 3000 km)	41
Adjusting the buggy wheel	20	Appendix	42
Mounting the tow bar	20	Technical data	42
Mounting the coupler onto a bicycle	21	Warranty terms	43
Installing optional accessories	22	Support information	43
Adaptor for baby seat of Class 0+	22	Spare parts	44
Utilisation	25		
Operating and setting the disk brake *	25		
Operating the disk brake	25		
Setting the disk brake	26		

Introduction

Proper use

The *Kidgoo* was designed as a bicycle trailer and comes with an additional buggy and walker function. For **Trailer mode**, use a tow bar with coupler to connect the trailer to a suitable towing vehicle (bicycle or motorised pedelec with a maximum speed of 25 km/h). With the buggy wheel attached, the *Kidgoo* can be used as a child carrier in **Buggy mode**. In **Walker mode** you can use it when jogging or walking.

The *Kidgoo* is available as a one-seater (*Kidgoo*) or as a two-seater (*Kidgoo*) and should be used exclusively for the private transportation for one or two children on paved routes. You can also carry baggage in the compartments intended for that purpose, provided that you observe the permissible weight limits and stow the baggage securely so that the load is evenly distributed.

During the journey, each child must be secured in the seat by a safety harness. If you are carrying only one child in the two-seater, you must alter the harness arrangement as per the instructions in the chapter **“Adjusting the safety harnesses (Kidgoo2)” on page 31** so that the child is seated securely in the centre. To safely transport a baby, use the separately available adaptor and install a baby seat of the class 0+.

The *Kidgoo* fulfils all safety requirements of the European standard for bicycles and bicycle trailers (DIN EN 15918). It also considers the wheeled child conveyances norm EN 1888. Use as a bicycle trailer is permitted in darkness or in conditions of poor visibility only if a rear light conforming to the road traffic regulations has been retrofitted to the back of the trailer.

It must not be used on unsurfaced ground, to transport baggage in the passenger compartment, to carry animals or for commercial use. It is essential to observe the limit values specified in the chapter **“Performance limits” on page 4** and to check them before every journey. In all cases, the rider of the combination or the person using it in Buggy or Walker mode is responsible for the proper use and roadworthiness of the *Kidgoo*.

Performance limits

The *Kidgoo* can only be safely used if you observe and adhere to the following performance limits in every mode:

Requirements for passengers	<i>Kidgoo1</i>	<i>Kidgoo2</i>
Weights		
Permissible total weight (<i>Kidgoo</i> + children + luggage)	50 kg	60 kg
Maximum weight per child	22 kg	18* kg
Age		
Minimum age (without baby seat) The child must be able to sit up independently. For children aged up to 18 months, we recommend using a comfort insert, see “Accessories” on page 12 .	6 months	6 months
Minimum age (with baby seat)	1 month	1 month
Maximum age	6 years	6 years
Size		
Maximum height	116 cm	116 cm

Requirements for baggage	<i>Kidgoo1</i> and <i>Kidgoo2</i>
Storage space (behind the seat)	5 kg
Pouch for small items (under the push handle)	2 kg

* When transporting one child in a two-seater, the maximum weight of the single-seater applies.

Introduction

The following additional restrictions apply to Trailer mode:

Requirements for the tow bar	<i>Kidgoo1 and Kidgoo2</i>
Permissible tow bar load range (on the coupler pocket)	3 – 8 kg
Minimum ambient temperature	-15° C

Requirements for the towing vehicle	<i>Kidgoo1 and Kidgoo2</i>
Vehicle type	Bicycle (also recumbent bicycle), pedelec (supported for up to 25 km/h)
Maximum permissible speed	25 km/h; in curves max. 7 km/h (walking pace)
Rear wheel size	20" – 29"

Notes on the user manual

This user manual provides you with information about all technical and safety aspects that you require for mounting, using and maintaining the *Kidgoo*.

- ▶ Read the user manual in full.
- ▶ Utilise the user manual to provide instruction for all users.
- ▶ Always keep the user manual close to the *Kidgoo*.

The following typographical elements are employed in the user manual to indicate the possible danger sources or special information:



Danger!

Identifies notices pertaining to the Danger risk level. Indicates possible dangers that can result in injury if the instructions are not followed.



Caution!

Identifies notices pertaining to the Caution risk level. Indicates possible dangers that can result in material damage if the instructions are not followed.



Tip!

Identifies important information pertaining to the current subject. Indicates alternative actions, other information sources or helpful tips.

All **stated positions** (left, right, front, back, top, bottom etc.) refer to the perspective of a viewer standing behind the push handle and looking in the direction of travel. The tow bar is therefore in front, the push handle behind.

In this user manual, the word **user** refers to the person transporting children with the *Kidgoo* and making the necessary adjustments on the vehicle.

This user manual is suitable for the *Kidgoo* models with disc brake (*Q8000-S-LV* and *Q9000-S-LV*) as well as for the models (*Q8000A-LV* and *Q9000A-LV*) with manually operated parking brake. Sections and notes which only apply to one of the model ranges are labelled with an asterisk (*) as well as a relevant note.

Safety instructions



Danger!

Read the safety instructions below carefully.

The safety and accident prevention regulations valid in your region and statutory rules such as the road traffic regulations also apply, and take precedence in cases where there is doubt.

Make sure that the *Kidgoo* is used only by persons suitable for its operation, as defined below. Users must have read and understood this user manual in full.



Caution!

The *Kidgoo* is not a toy and must not be misused as such. This means that it is not permissible to attach the *Kidgoo* to a child's bicycle.

Users

- Users are defined as the following persons:
 - Any person carrying out assembly work on the vehicle or changing the settings.
 - The rider of the towing vehicle in Trailer mode.
 - The operator in Buggy or Walker mode.
- The user must be at least 16 years old and mentally mature enough to operate the *Kidgoo* and transport children.
- In Buggy mode, operation by a younger person is allowed if he/she is supervised by a person who meets the requirements stated above.
- The user is at all times responsible for the proper use and roadworthiness of the *Kidgoo*.

Conditions of use

- The *Kidgoo* must not be used for commercial or competitive purposes.
- Before every journey, check that the *Kidgoo* is in a proper and technically faultless condition. Perform a visual inspection and in particular pay attention to the instructions and checklists in the chapter “**Maintenance intervals**” on page 40. The notes in the section “**Before every ride**” also apply to the first use of the *Kidgoo*.
- Also inform yourself about country-specific rules and traffic regulations if you are making trips across borders or if you want to take the *Kidgoo* with you on trips abroad.
- Before every journey, make sure that the requirements for the particular mode have been fulfilled. In particular, pay attention to the table and the instructions in the chapter “**Setting the mode**” on page 29.
- In Trailer mode, a rear light conforming to the road traffic regulations must be retrofitted to the back of the trailer for journeys in darkness or conditions of poor visibility.
- Before every journey, close the inner part of the 3-in-1 canopy so that the integrated insect net protects the children from insects and small stones. When in traffic, the weather canopy should also be closed and the ventilation window open to provide protection against exhaust fumes.

Safety instructions

Passengers

- The *Kidgoo1* can carry one child and the *Kidgoo2* can carry two children aged between 1 month and 6 years. Special accessories must be used in order to secure children who are under 6 months old or who cannot sit upright independently, see [“Accessories” on page 12](#).
- So that they have sufficient headroom in all situations, the children must not be taller than 118 cm.
- Each child must be properly fastened in with a 5-point safety harness.
- The children must wear bicycle helmets for every journey. This is also recommended for the bicycle rider in Trailer mode in order to set a good example.
- Before each journey, explain to the children that they must behave appropriately. Undoing safety harnesses, excessive rocking or leaning out must be strictly forbidden.
- Make sure that the cabin is well ventilated and make sure that the children are wearing clothes appropriate for the weather conditions and the cabin's inside temperature.
- Never leave children unsupervised in the *Kidgoo* and make sure that they feel comfortable.
- Make regular stops during longer journeys to give the children the opportunity to get out and move around. Make sure that they drink sufficient liquids.

Towing vehicle (Trailer mode)

- As the towing vehicle, it is not permitted to use vehicles that must be registered such as motorised e-bikes for speeds up to 45 km/h (known as S-pedelecs) or vehicles with a combustion engine.
- The bicycle or the pedelec (motorised for speeds up to 25 km/h) must be technically sound and suitable for towing loads in accordance with the permissible total weight. The maximum permissible total weight can be found in chapter [“Performance limits” on page 4](#). For details, read the towing vehicle's manual or consult a specialist dealer for a suitable inspection to be carried out.
- Before every journey, test the function of the bicycle's brakes, brake linings and tyres and inspect them for wear. Check that the coupler is secure.
- For carrying passengers, the bicycle should be equipped with a rear-view mirror. Working lights conforming to the road traffic regulations are mandatory for journeys in darkness or conditions of poor visibility.

Maintenance and storage

- Follow all instructions relating to the care and maintenance of the *Kidgoo* and observe the specified maintenance intervals, see [“Care and maintenance” on page 39](#).
- Install and use only original accessories and spare parts manufactured or recommended by Qeridoo. Using other products relieves the manufacturer of liability.
- Only carry out structural modifications or extensions to the vehicle which are necessary for the use of the approved accessories in accordance with the assembly instructions. Any further manipulation that is not expressly approved by the manufacturer in writing relieves the manufacturer of liability in the event of accidents and defects.
- Follow the instructions in the chapter [“Storage” on page 38](#) for storing the *Kidgoo* properly when it is not in use.

Safety instructions

Cycling with a trailer

The way in which the bicycle moves changes significantly when it is pulling a trailer, and this is particularly noticeable when braking and cornering. With regard to this, pay attention to the following:

- Practice cycling with the trailer before going out onto the road.
- Do not carry children until you have familiarised yourself with the different riding behaviour on suitable terrain.
- Think of the children's safety whenever you ride. Always adapt your way of riding and your speed to local conditions, and never forget that you are towing a trailer.

Additional lanes

- The two wheels of the *Kidgoo* run outside the familiar cycling lane. On all routes, particularly when there are obstacles and potholes, remember that you will always need 3 suitable lanes for safe riding.
- The *Kidgoo1* is 76 cm and the *Kidgoo2* is 86 cm wide. Maintain a sufficient distance from obstacles and avoid routes that are too narrow. Always negotiate narrow points and bends slowly.
- Combined, the bicycle and trailer are at least 2.5 m long in total. Negotiate curves with wider radii than usual and bear in mind the additional lane required for the inner wheel of the *Kidgoo*.

Additional weight

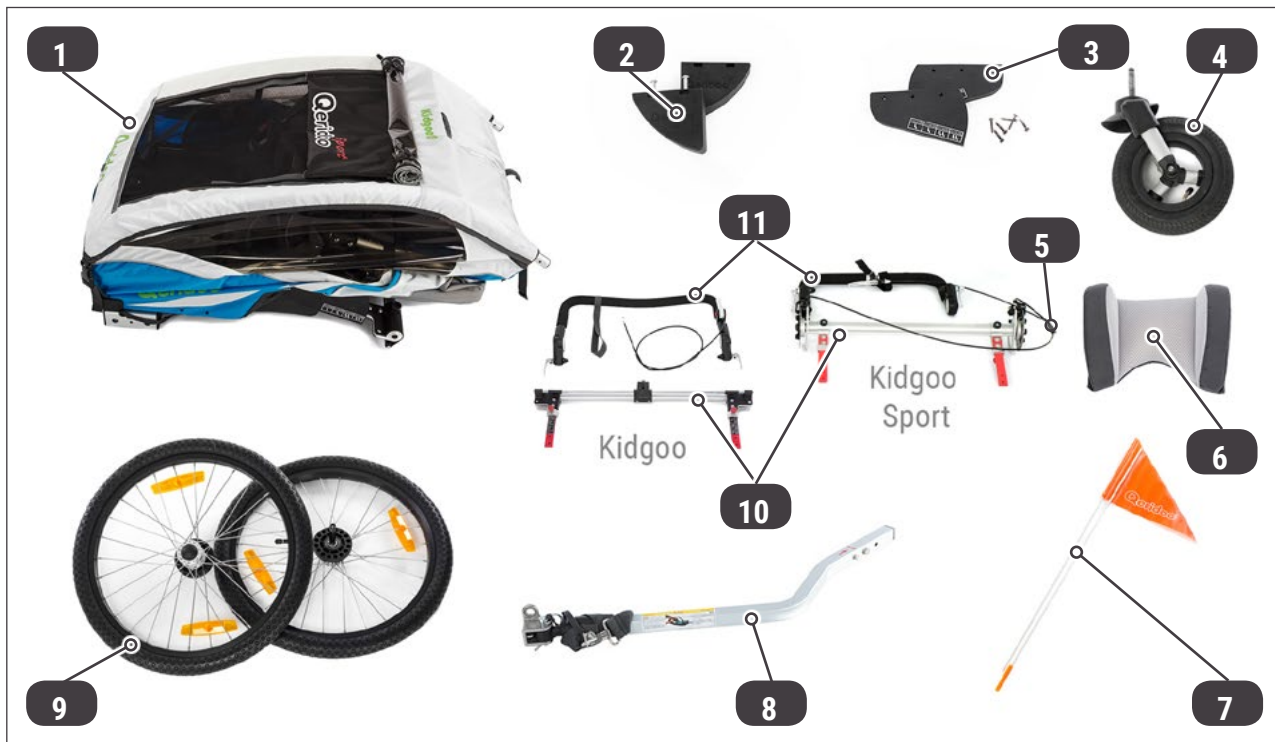
- When fully loaded, the *Kidgoo1* weighs up to 50 kg and the *Kidgoo2* weighs up to 60 kg that the bicycle must pull, brake and keep on track in addition to its own weight and that of the rider:
 - Jerky pulling and braking puts high loads on the coupler and tow bar, and thereby increases wear.
 - All stopping distances are much longer when braking, and the stress on the brake linings is correspondingly greater. The stopping distance is further increased on wet surfaces and downhill slopes.
 - During braking, especially on bends, the trailer can swing out or push the bicycle's rear wheel to the side and reduce its traction.
 - High centrifugal force on bends can result in the trailer tipping over.
- Do not exceed the maximum permitted speed of 25 km/h and avoid riding at an angle.
- Negotiate bends no faster than at walking pace (max. 7 km/h) in order to prevent excessive centrifugal forces.

Defensive riding

- Always ride defensively and with foresight.
- Brake in good time before reaching bends, junctions, obstacles etc.
- Always negotiate curbs and uneven surfaces slowly. Keep away from steps, escalators and very steep stretches.

Product overview

Scope of delivery



- 1 Cabin with seats, back pad and 5-point safety harnesses
- 2 Wheel guard (2x)
- 3 2 leaf suspension covers with imprinted adjustment scale
- 4 Multiwheel buggy wheel
- 5 Brake cable
- 6 1 headrest (*Kidgoo1*) or 2 headrests (*Kidgoo2*)
- 7 Pennant with 2-part pennant staff and centre piece
- 8 Tow bar with coupler and retaining strap
- 9 2 wheels (20" with push-in axle and 2 spoke reflectors on each)
- 10 Wheel axle with disc brake system and adjustable suspension (*Q8000-S-LV / Q9000-S-LV*) or wheel axle with adjustable suspension (*Q8000A-LV / Q9000A-LV*)
- 11 Push handle with hand strap and brake lever for the disk brake (*Q8000-S-LV / Q9000-S-LV*) or push handle with hand strap and brake lever for the parking brake (*Q8000A-LV / Q9000A-LV*)

The scope of delivery includes some functional units of the *Kidgoo* already preassembled.

- ▶ Unpack all supplied parts and place these on a clean surface.
- ▶ Check the contents of the package against the list provided.



Caution!

Contact our Service department immediately if any parts are missing or if you find that the packaging or product is damaged, see **"Support information"** on page 43.

- ▶ Remove the packaging material and all protective caps, and dispose of them in accordance with the environmental guidelines that apply in your region.
- ▶ Read the chapter **"Assembly"** on page 19 before you assemble parts.

Product overview

Components and control elements

Side view



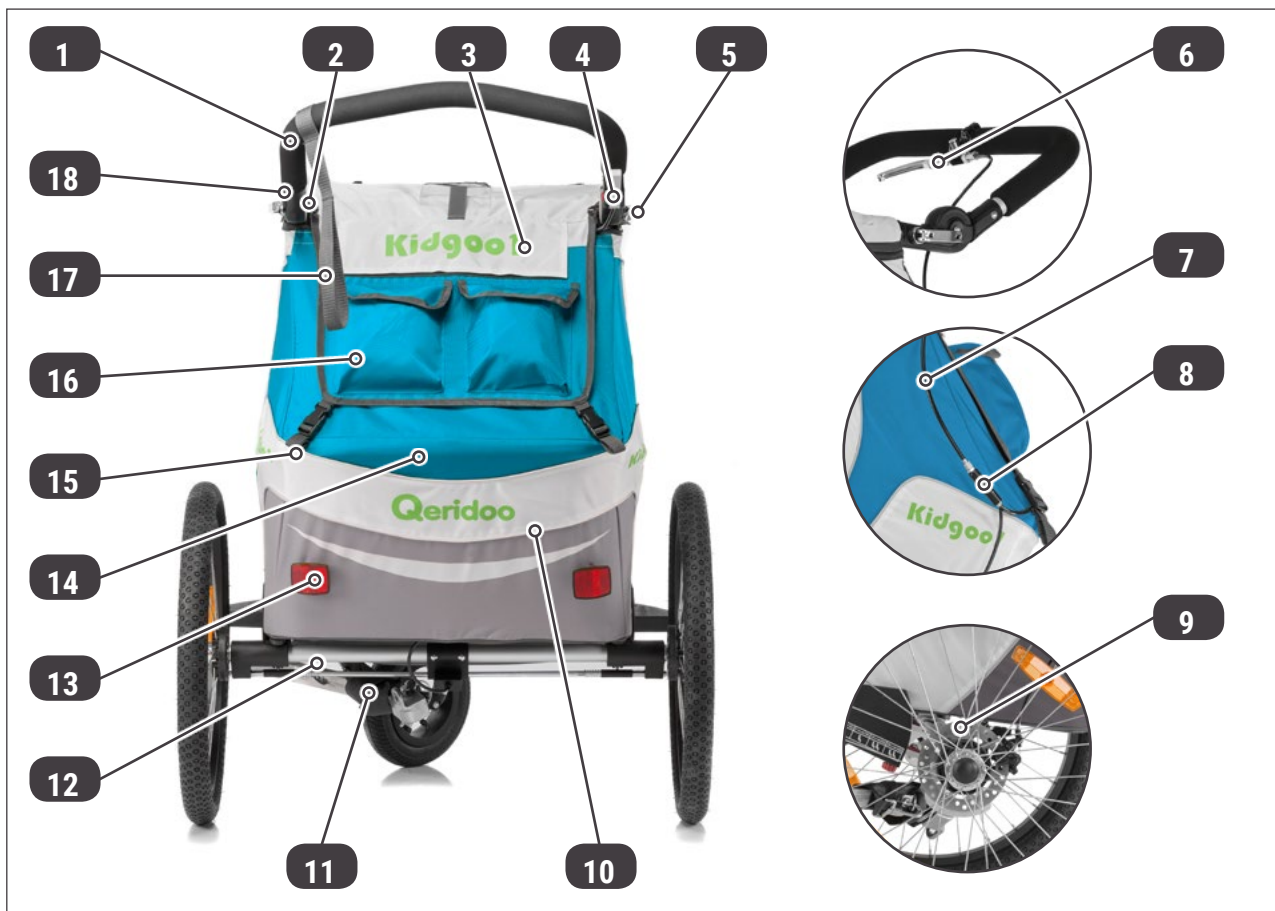
- | | |
|--|---|
| <p>1 Cabin (frame made from aluminium tubes with weatherproof fabric cover)</p> <p>2 Side window (right, incl. ventilation window)</p> <p>3 Canopy with insect, rain and sun cover; window film can be rolled up</p> <p>4 Seat with 5-point safety harnesses, head rests and back pad</p> <p>5 Reflective seams in the fabric cover</p> <p>6 20" wheel with push-in axle, air valve (Schrader valve) and spoke reflector (orange)</p> <p>7 Rubber cap for push-in axle release when mounting the wheels</p> <p>8 Wheel axle with disc brake * or parking brake * and adjustable suspension</p> | <p>9 Wheel guard for deflecting obstacles</p> <p>10 Tow bar for Trailer mode (in the standby position)</p> <p>11 Tow bar holder on the cabin frame with cotter pin fastening</p> <p>12 Buggy wheel for three-wheel use in Buggy or Walker mode</p> <p>13 Wheel mount on the cabin frame with mode switch
Buggy mode: Wheel turnable
Walker mode: Wheel running straight
Trailer mode: Buggy wheel removed</p> <p>14 Front reflector, white</p> <p>15 Harness fastener of canopy</p> |
|--|---|

* according to model

Product overview

Components and control elements

Rear view



- | | |
|--|---|
| <ul style="list-style-type: none"> 1 Push handle with safety function as roll-bar 2 Pushbutton for adjusting the height of the push handle (both sides) 3 Ventilation window, can be rolled up 4 Parking brake brake lever * 5 Quick-release clamp for securing the push handle (2x) 6 Disc brake brake lever *, lockable 7 Brake cable of disc brake * / parking brake * 8 Brake cable branch *, adjustable 9 Disk brake system * 10 Reflective seams in the fabric cover | <ul style="list-style-type: none"> 11 Coupler pocket with cotter pin fastening and retaining strap for securing the tow bar on the bicycle frame 12 Wheel axle 13 Rear reflector, red 14 Storage space with inside pocket, accessible from the outside (max. 5 kg baggage) 15 Harness to open the storage space cover 16 Storage space cover with two pouches for small items (max. 2 kg baggage) 17 Hand strap for Buggy and Walker mode 18 Pennant pouch for holding the pennant staff (inside) |
|--|---|

* according to model

Product overview

Accessories

Using the accessories listed here, you can extend your *Kidgoo* and optimally adapt it to suit your needs and the age of your children:



Coupler
Art. no.: E77-K



Rear light, battery operated
Art. no.: FK589



Adaptor for baby seat (Class 0+)
Art. no.: AD-900



Baby seat (Class 0+)
Art. no.: 1298



Baby seat
Art. no.: 12578



Baby seat, variable-length
Art. no.: BS.04.013.00



Comfort insert
Art. no.: S-58697



Seat cushion
Art. no.: SI-5555 (*Kidgoo1*)
Art. no.: SI-656 (*Kidgoo2*)

Product overview



Rain cover
Art. no.: **JR-8-1** (*Kidgoo1*)
Art. no.: **R-100-2** (*Kidgoo2*)



Folding garage
Art. no.: **035689**



Storage and transport bag
Art. no.: **QT-2999**

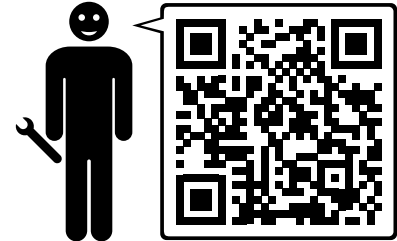
You can find our current **list of dealers** on the Internet at:

<http://dealerlocator.qeridoo.de>

Assembly

Below you can read all the information that you will need to assemble your *Kidgoo* properly.

- ▶ Make sure that you have sufficient space to assemble it.
Also pay attention to the door width at the place of installation: The *Kidgoo1* is 76 cm wide with the wheel guards fitted and the *Kidgoo2* is 86 cm wide.
- ▶ Have a size 4 hex key and a medium-sized Phillips screwdriver to hand (not supplied).
- ▶ Perform each of the instructions step by step.
- ▶ If necessary, follow the QR code to call up a video about assembly and operation on the Internet.



Danger!

Never perform assembly work if there are children in the cabin. Keep children away from the vehicle during assembly.

When handling moving components, make sure that your hands or fingers do not get trapped.

Unfolding the cabin

- ▶ Place the collapsed cabin in the assembly area.
 - ▶ Position yourself behind the cabin.
 - ▶ Pull both sides of the rear cabin frame all the way up.
 - ▶ Open the storage space cover.
-
- ▶ Pull the lower horizontal bar backwards evenly until the two red locks on the left and right engage audibly.



Installing wheel axle and push handle



Caution! (Q8000-S-LV and Q9000-S-LV)

In the as-delivered state, wheel axle, disk brake and push handle are connected via the brake cable. To avoid damaging components, you should place the push handle on the floor behind the cabin when assembling the wheel axle.

- ▶ Tilt back the cabin and place it on its reverse side. This makes the lower cabin frame accessible for assembly.

Securing the wheel axle

The wheel axle is equipped with adjustable leaf suspensions. The suspension effect of the two red leaf suspension plates can be adjusted by moving a clamp, see [“Adjusting the suspension” on page 37](#).

Screw the wheel axle with leaf suspensions into the wedge-shaped leaf suspension mount of the cabin frame. You will need 4 hexagon socket screws (M7) as well as the 8 appropriate washers and 4 spring lock washers from the screw set.

- ▶ Place 2 washers and 1 spring lock washer on each screw. The spring lock washer must be placed between the two washers.
- ▶ Adjust the leaf suspension plates using the clamps so that their holes are placed on top of each other.
- ▶ The knurled screws of the clamps point downwards (away from the cabin) when assembling the axle.
- ▶ Hold the wheel axle with the leaf suspensions against the wedge-shaped leaf suspension mount.
- ▶ Screw the four screws prepared with washers and spring lock washers through the leaf suspension into the leaf suspension mount.
- ▶ Tighten the screws using a hex key (tightening torque max. 4 - 5 Nm).



Cover leaf suspensions

The leaf suspensions are equipped with a cover to protect against contusion. An imprinted scale aids the adjustment of the suspension effect.

The cover is screwed to the cabin frame using 3 screws each. You will need the 6 Phillips screws from the screw set.

- ▶ Hold the cover against the cabin frame so that the imprinted scale labels the adjustment track of the leaf suspension clamp.
- ▶ Mount the cover to the cabin frame using three screws.
- ▶ Ensure that the screws are only tightened enough using a Phillips screwdriver, so that the cover does not get damaged.
- ▶ Mount the second cover in the same way.



Assembly

Fitting the wheel guard

The wheel guard on both sides of the cabin prevents the wheels from getting stuck on pillars or similar obstacles.

- ▶ Prepare the wheel guard by removing the two prefitted screws from the holes.
- ▶ Hold the wheel guard close to the wheel against the cabin frame so that the following conditions are fulfilled:
 - The holes on the wheel guard face the holes in the cabin frame tube.
 - The curved outside of the wheel guard widens towards the wheel.
- ▶ Open the canopy and insert the 2 screws from the inside through the tube of the cabin frame.
- ▶ Position the wheel guard on the outside onto the screws with the holes so that the bent exterior side of the wheel guard gets broader towards the wheel.



- ▶ Loosely screw the self-locking nuts onto the threads. When doing this, make sure that the circular side of the nut is not against the thread.
- ▶ Use a size 4 hex key to alternately tighten both screw connections (tightening torque max. 4 Nm).
- ▶ Mount the second wheel guard in the same way for the other wheel.

Mounting the push handle

The push handle has multiple height settings and is used for pushing, pulling and manoeuvring your *Kidgoo*. And if it becomes necessary, it performs an important safety function as a roll-bar. The push handle is attached at the top of the cabin frame using 2 quick-release clamps.

- ▶ Position the cabin upright.
- ▶ Unfold the push handle completely. To do this, keep the light grey pushbuttons pressed on both sides, see [“Adjusting the push handle” on page 29](#).
- ▶ Loosen the two pre-assembled quick-release clamps and remove them.
- ▶ Hook the upper loops of the canopy into the tube ends at the cabin roof.
- ▶ Insert the two ends of the push handle into the tube ends at the cabin roof.



Caution!

Avoid twisting the brake cable. It should be possible to lay it towards the wheel axle after assembly of the push handle.

Assembly

- ▶ Place the quick-release screws from the outside through the holes of the following parts to secure the connection:
 - Reinforcement plate (outside of the push handle)
 - Push handle
 - Tube ends of the cabin roof



- ▶ Place the nut onto the thread and tighten until the quick-release clamp can only be closed with a bit of force.
- ▶ Close the quick-release clamp.



Danger!

Make sure that the push handle is also mounted for every journey in Trailer mode. Only then does the cabin have a roll-bar.

Relocate brake cable

Parking brake of the models *Q8000A-LV* and *Q9000A-LV*

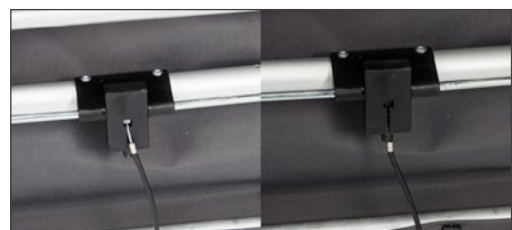
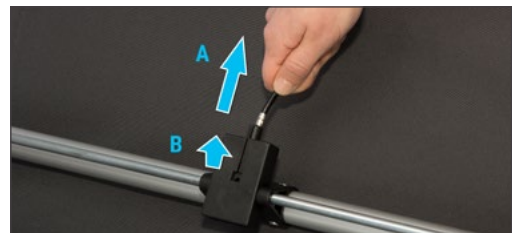
You can operate the parking brake using the brake lever at the push handle. When delivered the parking brake and the push handle are connected via the brake cable. Two loops on the sides of the cabin are used for fastening.

- ▶ Run the brake cable through the loops on the right side and on the bottom of the cabin.
- ▶ Close both velcro loops.

Optional brake cable relocating:

The brake cable can alternatively be routed through the cabin interior. For this purpose the brake cable has to be released from the parking brake.

- ▶ Pull the brake cable firmly until the metal sleeve slides completely out of the anchoring.
- ▶ Remove the end of the brake cable from the opening of the parking brake.
- ▶ Guide the loose end of the brake cable through the right opening of the cover into the interior space of the cabin.
- ▶ Open the rear storage space cover.
- ▶ Guide the brake cable through the opening in the floor of the trailer.
- ▶ Tilt back the cabin and place it on its reverse side. This makes the lower cabin frame accessible for assembly.
- ▶ Hook the end of the brake cable into the opening of the parking brake intended for this.
 1. Pull the brake cable downwards properly and guide the end of the wire through the lower opening of the brake.
 2. Place the metal sleeve of the brake cable into the socket of the parking brake to ensure the brake cable receives the proper tension.



Assembly

Disc brake of the models *Q8000-S-LV* and *Q9000-S-LV*

You can operate the disc brake system using the lockable brake lever in the middle of the push handle. The brake cable is laid along the storage space towards the disc brakes.



Inserting the wheels

- ▶ Place the cabin on one side to allow the wheel to be inserted more easily.
- ▶ Insert one wheel into the wheel axle:
 - Hold the wheel so that you can press your thumb onto the rubber cap on the outside of the wheel hub.
 - Press on the rubber cap and keep it pressed in order to open the push-in axle fastening.
 - Insert the wheel's push-in axle as far as it will go into the axle retainer.
 - Release the rubber cap to secure the push-in axle.
- ▶ Pull on the wheel to check that the wheel is locked in the axle retainer.
- ▶ Turn the cabin onto its other side and insert the second wheel in the same way.



Danger!

After mounting the wheels, secure the *Kidgoo* whenever you park it so as to prevent it from rolling away, see [“Using the arresting function of the disc brake” on page 25.](#)

- ▶ Check whether there is sufficient air in the wheels (recommended air pressure: 2.75 – 4.5 bar). If necessary, use an air pump for car valves to top up with air.

Tightening the backrest

The stable backrest is an important safety element. The straps under the bench seat and behind the cabin must always be tightened for a secure hold.

- ▶ Put the cabin into the upright position and open the cover.
- ▶ Check the tension of the 4 harnesses under the bench seat and tighten them.



Assembly

- ▶ Secure the straps using the buckles:
 - In each case, thread the end of the strap into the buckle as shown.
 - It is essential to check that the two buckles are secure.
- ▶ Open the cover of the storage space and check the tension of the 5 harnesses behind the backrest.
- ▶ Pull the harnesses that are tensioned around the upper crossbar so that a clearance of approx. 4 – 8 cm remains between the crossbar and the backrest.



Inserting the pennant



Danger!

The pennant must always be mounted in Trailer mode. Otherwise the very low *Kidgoo* is too easily overseen by other road users.

For safety reasons, we recommend putting the pennant into the pennant pouch so that it is easily visible before every journey, including in Buggy or Walker mode.

- ▶ Open the storage space cover to ensure that you can access the interior comfortably.
- ▶ Using the connecting piece, insert the pennant staff into the extension rod.
- ▶ Place the extended pennant staff through the opening in the upper cover and place the end piece into the pennant pouch in the interior.
- ▶ Close the storage space cover.
- ▶ Unroll the pennant so that it can fly clearly visible on the pennant staff.



Optional assembly steps

Installing the buggy wheel

You need the buggy wheel for Buggy and Walker mode. The buggy wheel is connected directly with the wheel suspension attached to the frame and is mounted so that it can rotate through 360°.

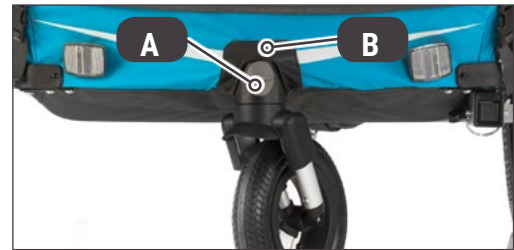
Assembly

- ▶ Lift the cabin at the front.
- ▶ Place the buggy wheel into the wheel mount as far as it will go, until it engages audibly with a clicking noise.
- ▶ Check whether there is sufficient air in the buggy wheel (maximum air pressure: 2 bar). If necessary, use an air pump for car valves to top up with air.



Adjusting the buggy wheel

- ▶ Use the mode switch [A] and the release button [B] at the front of the wheel suspension to set the required operating mode:
 - Buggy mode: Buggy wheel can rotate through 360°.
 - Walker mode: Buggy wheel is secured facing straight ahead.
 - Trailer mode: Release and pull out the buggy wheel.



Mounting the tow bar

You only require the tow bar in Trailer mode. It is used to hook up the *Kidgoo* behind a bicycle equipped with a suitable coupler, see [“Connecting the trailer to a bicycle” on page 34](#).

The tow bar is attached to the tow bar mount using a locking bolt and can be used in two different positions:

- Attachment position: The tow bar is facing forwards.
- Standby position: The tow bar is facing to the rear and is carried under the cabin floor.

In both positions, the tow bar is also secured with a cotter pin.

- ▶ Push the front button on the tow bar so that the locking bolt unlocks.
- ▶ Keep on pushing down the button and push the tow bar forwards until the mark in the tow bar mount is reached.
- ▶ Release the button so that the locking bolt secures the tow bar in the tow bar mount.
- ▶ Also secure the tow bar additionally, by placing the cotter pin through the middle hole of the tow bar mount and folding down the securing bracket.



Tip!

You do not have to remove the tow bar completely. Simply place the tow bar into the tow bar mount from behind to stow it under the cabin floor, see [“Insert tow bar” on page 30](#).

Assembly

Mounting the coupler onto a bicycle



Danger!

Make sure that your bicycle is suitable for towing a bicycle trailer, see “**Performance limits**” on page 4. Since it may in some cases be necessary to change the rear wheel axle, it is best to consult your specialist dealer or the bicycle manufacturer in order to do this.



Caution!

Secure the bicycle to prevent it from toppling over, and make sure that the rear wheel cannot drop out of the axle mount after the screw connection has been undone. Use for example an assembly stand, or turn the bicycle upside down so that you can place it on its saddle and handlebars.

In the as-delivered state, the supplied coupler is connected to the tow bar:

- ▶ Undo the cotter pin fastening and remove the coupler.
- ▶ Next, insert the cotter pin fastening back into the coupler pocket of the tow bar.
- ▶ Prepare the bicycle for mounting the coupler by undoing the screw connection of the rear wheel axle:



- Quick-release axle: Open the bracket of the quick-release axle and unscrew the cap nut on the other side of the rear wheel axle.
- Full axle: Unscrew the nut on the left side of the rear wheel axle.
- ▶ Mount the coupler on the rear wheel axle:
 - Place the large hole of the coupler onto the left side of the rear wheel axle so that the coupler is facing outwards.
 - Screw on the dedicated nut and tighten it slightly.
 - Align the rear wheel so that it can turn freely.
- Align the coupler so that it faces horizontally to the rear.
- ▶ Tighten the connection firmly in order to secure the rear wheel:
 - Quick-release axle: Tighten the cap nut until you can close the clamp with a certain amount of pressure.
 - Full axle: Tighten the nut with a spanner. Always pay attention to the bicycle manufacturer’s notes about the tightening torque.



Danger!

The axle nut must engage the threads for at least five full turns in order to ensure adequate clamping force for holding the rear wheel securely. Please follow the assembly instructions for the hub and the manufacturer’s torque specifications when fastening the axle nut.

Assembly



Caution!

Due to the construction of the coupler, slight wear and tear in the form of scratches can occur at the connection between bicycle frame and coupler. This is not a reason for a complaint.



Danger!

Do not use a washer or similar at the connection between the bicycle frame and coupler because this could negatively affect the stability of the connection.



Tip!

The coupler can be permanently mounted on the bicycle. Additionally available couplers enable you to use the *Kidgoo* on different bicycles, see “Accessories” on page 12.

The supplied universal coupler is suitable for mounting on most rear-wheel versions. If it does not fit your bicycle, you can find suitable special couplers and conversion sets on the Weber Technik GmbH website: www.weber-products.de

Installing optional accessories

Accessories are available for *Kidgoo* which extend the range of applications or simplifies the use in certain situations. You can find information about the assembly and handling of these accessories here.

Adaptor for baby seat of Class 0+

Using the optionally available adaptor (art. no. **AD-800**) you can replace the bench seat of the *Kidgoo* with a baby seat of the Class 0+. This is the safest method to transport babies up to a weight of 13 kg in the *Kidgoo*. The adaptor is screwed tightly into the cabin frame; the click system of the adaptor is compatible with models from Maxi Cosi and the Qeridoo baby seat 0+ (art. no. 1298).



Danger!

Please remember that *Kidgoo2* can no longer be used to transport 2 children if the adaptor is attached. Only the transport of a baby which is securely fastened into the baby seat is allowed.

Assembly

The adapter set contains a screw set and the following components:

- [A]:** Adapter L (left, with holding rod)
- [B]:** Adapter R (right, with holding rod)
- [C]:** Safety harness with harness catch and 2 loops to fasten the ends of the adapter



You will need a hex key (size 4) as well as 2 spanners (width 8 and 11) for assembly.

After removing the bench seat, the adapters are screwed to the horizontal bars of the cabin floor on the left and right side.



Removing bench seat

- ▶ Open the cabin cover and the storage space cover.
- ▶ Loosen all harnesses which fasten the backrest and the bench seat, see [“Tightening the backrest” on page 18](#).
- ▶ Open the Velcro fasteners at the lateral frame rods.
- ▶ Remove the bench seat completely from the cabin.



Caution!

Store the bench seat, incl. 5-point safety harness, headrest, back pad and assembly material in a dry and well ventilated storage location for later use.

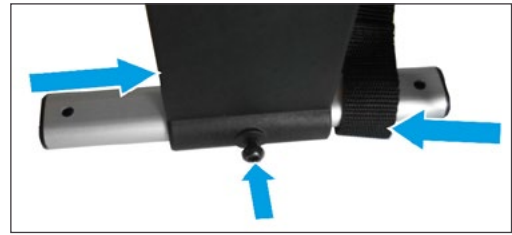
Attaching adapter and safety harness

After removing the bench seat, the adapters are screwed to the horizontal bars of the cabin floor on the left and right side. The adapters **[A]** and **[B]** are mounted onto these using the M7 screws from the screw set. Pay attention to the following instructions:

- The labels **R** and **L** on the adapters must be located on the right and left exterior sides.
- The holding rods of the adapter have a short and a long side. The short side must point in the direction of the tow bar. If this is not the case, the baby seat cannot engage.
- The ends of the safety harness **[C]** must be positioned at the front on the holding rod (between adapter and screw).

Assembly

- ▶ Prepare both adapters for assembly:
 - Slide the black adapters onto the holding rods and screw them on.
 - Slide the loops of the safety harness onto the front ends of the holding rods.



- ▶ Push the padding of the front horizontal bar apart to reveal the holes of the horizontal bar.
- ▶ Place the shorter quick-release clamp through the front holes of the holding rod and horizontal bar from the top.
- ▶ Place the longer quick-release clamp through the rear holes of the holding rod from the top.



- ▶ Place the spacer between the holding rod and horizontal bar each and slide the quick-release clamp through the horizontal bars.
- ▶ Position the locknut from underneath and close the quick-release clamps.

Inserting baby seat



Danger!

Read the manual which you received with the baby seat.
Pay particular attention to all instructions regarding the safety of the baby.

- ▶ Open the harness catch of the safety harness.
- ▶ Place the baby seat into the adapter; the lock of the baby seat must engage audibly on both sides.
- ▶ Before beginning your ride, close the safety harness of the adapter to secure the baby seat additionally.
- ▶ Operate the *Kidgoo* as usual and regularly check the screw connections for a tight seat.



Utilisation

Below you will find all the information for adapting the *Kidgoo* to the required modes and to allow you to use all the convenience functions.

Operating and setting the disk brake *

(* Only available for the models *Q8000-S-LV* and *Q9000-S-LV*.)

The disc brake system of the *Kidgoo* consists of two disc brakes which are connected to the brake lever attached at the push handle via a brake cable. It is used as a parking brake but also for braking during the journey in the buggy and walker mode.



Danger!

Before commissioning the *Kidgoo* the disc brake must be adjusted to ensure the correct use, see [“Setting the disk brake” on page 26](#).



Tip!

New brake linings must first be run in. To do this, the brake should first rub slightly 30 times, over a distance of several meters. Disc brakes only reach their full braking potential after they have been run in.

Operating the disk brake

It is operated centrally using the lockable brake lever in the middle of the push handle.



Danger!

When it is stationary, secure the *Kidgoo* in order to prevent it from rolling away by applying the brake. Also remember to release it before you set off.

Braking during the journey

The brake can help you to manage downhill slopes in buggy and walker mode. Braking and the strength of the braking effect work in the same way as the brake lever of the bicycle handlebar.

- ▶ Pull the brake lever towards the push handle to decelerate the *Kidgoo*.
- ▶ Release the brake lever to loosen the brake.



Danger!

During use in the Walker mode or if you are rollerblading, it is necessary to lock the buggy wheel, see [“Adjusting the buggy wheel” on page 30](#). The trailer can veer over to one side if the brake effect is not set exactly on both wheels.

Using the arresting function of the disc brake

Activate the parking brake when standing by pulling the brake lever and locking it.

- ▶ Pull the brake lever close to the push handle until the locking pin can be pushed down.
- ▶ Push the locking pin down fully and release the brake lever. The locking pin keeps the brake under tension.



Utilisation



Danger!

Always check if the braking effect is sufficient. Adjust the brake immediately if you can push the *Kidgoo* when the parking brake is applied.

- ▶ To release the parking brake, pull the brake lever towards the push handle again.
- ▶ As soon as locking pin jumps upwards, you can operate the brake as normal.



Checking the brake effect

It is easy to check whether both disc brakes are experiencing the same brake effect:

- ▶ Activate the parking brake by locking the brake lever.
- ▶ Then try to push the *Kidgoo* in a straight line despite the locked brakes. When doing this, the *Kidgoo* can move in the following ways:
 - *Kidgoo* does not roll: Both brakes are adjusted equally and well.
 - *Kidgoo* rolls to the left: The right brake is not adjusted sufficiently.
 - *Kidgoo* rolls to the right: The left brake is not adjusted sufficiently.
 - *Kidgoo* rolls in a straight line: Both brakes are adjusted equally but are not strong enough.

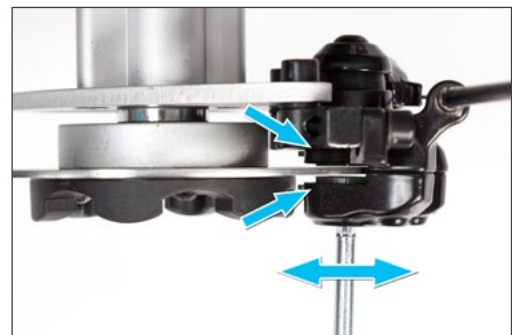


Danger!

If you are able to push the *Kidgoo* away, you must adjust the brakes before the next use.

Setting the disk brake

Due to the design, using the disc brakes on both sides can lead to small deviations when running in a straight line. Therefore, the distance between brake lining and brake disc must be set individually in both callipers.



The following preparations should be made to carry out the adjustments:

- ▶ Remove both wheels from the cabin. Place the cabin on a table so that the callipers are easily visible.
- ▶ Have a size 5 mm hex key to hand (not supplied).

Since the inner brake lining is securely connected with the calliper, the following order should be observed when carrying out the adjustments:

1. Release brake cable and adjust calliper, see [“Adjusting the calliper” on page 27](#).
2. Adjust brake lining.
3. Adjust brake cable.

Utilisation



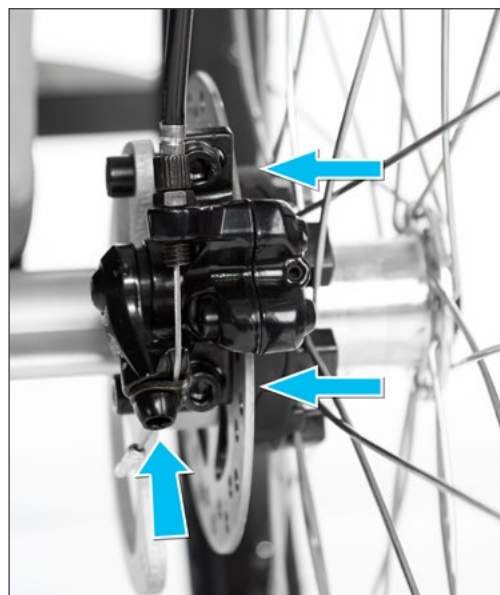
Caution!

Both disc brakes are adjusted optimally, if the brake linings have a distance of approx. 0.5 mm each to the brake disc when they are not being used.

Adjusting the calliper

The inner brake lining is securely connected with the calliper. It can only be adjusted by moving the calliper:

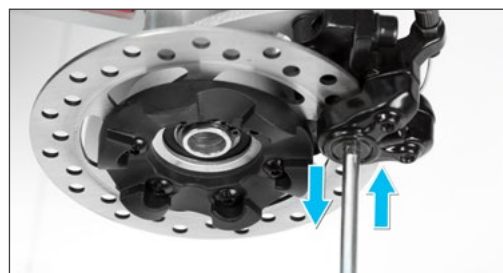
- ▶ Release the screw of the brake cable clamp which is used to attach the brake cable to the calliper.
- ▶ Release the two screws which are used to attach the calliper to the wheel axle. The depth of the calliper can now be adjusted.
- ▶ Slide the calliper until the inner brake lining almost touches the brake disc (approx. 0.5 mm). Ensure that the brake lining does not rub when turning the brake disc.
- ▶ Secure the calliper by tightening both screws.
- ▶ Pull the end of the brake cable tight and attach it by pulling tight the screw of the brake cable clamp.



Adjusting the brake lining

The outer brake linings are adjusted using the adjusting screw:

- ▶ Turn the adjusting screw to the left or right to change the distance between brake lining and brake disc.
- ▶ Slide the brake lining until it almost touches the brake disc (approx. 0.5 mm). Ensure that the brake lining does not rub when turning the brake disc.



- ▶ Ensure that the brake lining of both callipers is adjusted.
- ▶ Mount the wheels and check that both brakes have the same brake effect, see [“Checking the brake effect”](#) on page 26.
- ▶ If necessary, also correct the tension of the brake cable, see [“Adjusting the brake cable”](#) on page 27.

Adjusting the brake cable

The brake cable transfers the actuation of the brake lever to both disc brakes. You have to adjust the traction of the rope in the brake cable from time to time to ensure an optimal brake effect.

The brake is adjusted optimally if both wheels are experiencing the same brake effect as soon as you pull the brake lever. The brake lever itself may not be adjusted too tightly but it should never touch the push handle even when braking significantly.

Utilisation



Danger!

Check the brake cable, the ends of the brake rope and the brake linings for damages before changing the brake settings. Seek the support of a qualified specialist workshop if you have noticed damages or wear of the brake cables or brake lining.

You can improve the brake effect by tightening or loosening the tension of the brake ropes. To do this, turn the adjustment screws of the brake cable which you can find directly at the brake lever, the branch point and at both disc brakes:



- ▶ Turn the adjustment screw to the left or right to change the tension of the brake rope.
- ▶ Check first what effect the change has had, see “Checking the brake effect” on page 26.
- ▶ Adjust further adjustment screws as required until the brake pulls properly and evenly.



Operating the parking brake at the push handle *

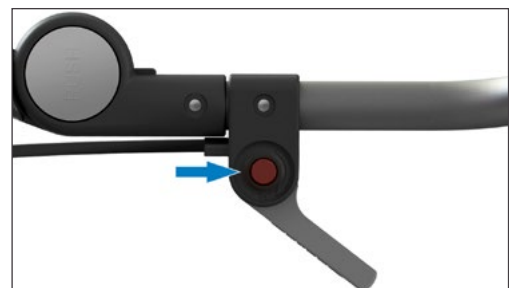
(* Only available for the models Q8000A-LV and Q9000A-LV.)



Danger!

When it is stationary, always apply the parking brake to secure the *Kidgoo* in order to prevent it from rolling away. Also remember to release it before you set off.

- ▶ Push down the brake lever to activate the parking brake.
- ▶ The parking brake is firmly locked when it has clicked at least two times.
- ▶ Check the braking force of the parking brake.
- ▶ If necessary, press the brake lever slightly further downwards.
- ▶ Push down the button on the brake lever to release the brake.



Adjusting the push handle

Use the two light grey pushbuttons to alter the height of the push handle. These are identified by the word "PUSH". You can set and engage the push handle at several levels in the 80 – 112 cm range.

- ▶ Hold the push handle with both hands so that your thumbs rest on the light grey pushbuttons.
- ▶ Press both pushbuttons and keep them pressed in order to release the height adjustment.
- ▶ Swing the push handle to the desired height.



- ▶ Release the two pushbuttons in order to activate the engagement function.
- ▶ Move the push handle slightly up or down until the height adjustment engages audibly.

Setting the mode

You can use the *Kidgoo* in one of the following modes:

- **Trailer mode:** Carrying children in the *Kidgoo* when cycling
- **Buggy mode:** Using the *Kidgoo* like a buggy
- **Walker mode:** Carrying children in the *Kidgoo* when jogging or walking

The table below shows the main settings that you must make for particular components for the respective mode:

Component	Status of the components in mode		
	Trailer	Buggy	Walker
Buggy wheel	must be completely removed	fitted (freely rotating)	fitted (fixed)
Tow bar	directed forwards (pay attention to tow bar load!)	directed backwards	directed backwards
Pennant	must be mounted	recommended	recommended
Push handle	maximum height (112 cm)	comfortable height	comfortable height
Hand strap on the push handle	–	wrapped around a wrist	wrapped around a wrist
5-point safety harness	must be fastened	must be fastened	must be fastened
Bicycle	the correct coupler must be installed	–	–
Optional accessories (see "Accessories" on page 12)	Rear light (mandatory in poor visibility or darkness)	–	Jogger air wheel with hand brake



Danger!

Before every journey, make sure that necessary adjustments have been made for the particular mode. For details of this, see the instructions in the following sections.

Utilisation

Adjusting the buggy wheel

You must make the following settings, depending on the mode.

Removing the buggy wheel (Trailer mode)

The buggy wheel must not be fitted in Trailer mode, because in certain riding situations it can make contact and cause serious accidents.

- ▶ Slightly lift the cabin at the front.
- ▶ Push the release button at the wheel mount and remove the buggy wheel completely.



Tip!

Carry the buggy wheel e.g. in the storage space in order to allow you to use the *Kidgoo* flexibly at your destination. Instructions for re-mounting it can be found in the chapter [“Installing the buggy wheel” on page 19.](#)

Setting the wheel so that it turns freely (Buggy mode)

It must be possible for the wheel to move freely through 360° in order to manoeuvre in Buggy mode.

- ▶ Push up the mode switch to release the wheel.

Securing the wheel (Walker mode)

In Walker mode, the wheel must not be at an angle to the direction of travel. You must lock the wheel to run straight ahead in order to prevent abrupt blocking.

- ▶ Push down the mode switch to make sure the wheel is running straight.
- ▶ Turn the positioned wheel backwards until it engages audibly.

Insert tow bar

The tow bar can either be brought forward into the attachment position or carried along backwards in the standby position: Pay attention also to the instructions in the chapter [“Mounting the tow bar” on page 20.](#)



Danger!

Wrap the retaining strap of the tow bar around the tow bar several times to ensure it does not hang down in the standby position. Otherwise it could become trapped on obstacles.

Using the pennant

The pennant must be attached in Trailer mode, see [“Inserting the pennant” on page 19.](#) For safety reasons, we also recommend this for the other modes.

Folding up the push handle

In Trailer mode, you should always fold the push handle into its highest position so that it can provide maximum safety as a roll-bar, see [“Adjusting the push handle” on page 29.](#)

Attaching the hand strap

In Buggy and Walker mode, the hand strap secured to the push handle must be attached to your wrist during every journey. Ensure you can safely operate the disk brake brake lever * even when the hand strap is applied.

Utilisation

Safety strap with bungee effect (inline skating)

When using inline skates, a special safety strap with a bungee effect has to be worn.

- ▶ Out on the waist belt.
- ▶ Wrap the end of the safety strap around the lower crossbar of the storage compartment room and fix it with the bolt carabiner.
- ▶ The strap may be fixed additionally with the loop at the opening of the storage room.



Danger!

Use the trailer only in conjunction with inline skates when you use the safety strap with bungee-effect. Otherwise the trailer could tip over or drive on unbroken in the event of a fall.

Putting on the 5-point safety harness

In every mode, the 5-point safety harness must be properly adjusted and the children must be fastened in, see **“Strapping in children”** on page 33.

Securing the load

Loading the baggage

Loading the storage space

- ▶ Undo the Velcro fasteners of the storage space cover and lift it.
- ▶ Pack larger items such as bags, toys or coats in the storage space. Also use the inside pocket which is integrated into the cover.
- ▶ Close the cover carefully.



Danger!

Loose objects and objects with sharp edges should only be stored in the sewn-in inner pouch in the storage space to avoid them damaging the cover or injuring the child.

Filling the pouches for small items

- ▶ Open the Velcro fastener of one of the two pouches for small items.
- ▶ Put in the utensils that you want to have readily to hand while you are on the road.
- ▶ Close the Velcro fastener.

Using the pouch for small items

- ▶ Put the children’s drinking bottles or toys into the pouch for small items in the cabin’s foot space.



Danger!

When loading, pay attention to the total permissible weight and the weight limits for the panniers, see **“Performance limits”** on page 4.

Adjusting the safety harnesses (Kidgoo2)

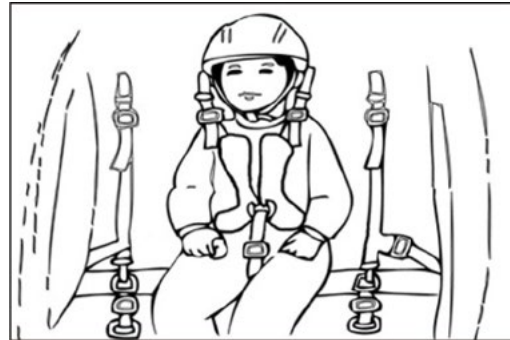
To achieve optimum load distribution, it is important for the load’s centre of gravity to be approximately in the middle of the cabin. In the as-delivered state, the 5-point safety harnesses are pre-adjusted for carrying two children. If you only want to carry one child, you must adjust the safety harnesses so that the child can sit in the middle.



Tip!

The optionally available accessories such as the baby seat, comfort insert etc. enable you to optimally adapt the *Kidgoo* to suit the age and size of your children, see [“Accessories” on page 12.](#)

- ▶ Undo the upper fastener of the two inner harnesses.
- ▶ Change round their pads and tongues:
 - Push the pad and the tongue of the inner left harness onto the right harness.
 - Push the pad and the tongue of the inner right harness onto the left harness.
- ▶ Put the harness catch, including the pad, onto the centre harness on the front of the seat. Use the harness catch of the left or right seat to do this.
- ▶ Repeat this procedure in reverse order whenever you require the safety harnesses for carrying two children.



Embarking the children

Preparing the cabin

- ▶ Apply the parking brake to secure the *Kidgoo* in order to prevent it from rolling away.
- ▶ Undo the both front harness fasteners of the cover and fold open the cover completely.
- ▶ Adjust the safety harnesses to the number of children, see [“Adjusting the safety harnesses \(Kidgoo2\)” on page 31.](#)
- ▶ Open the safety harnesses required:
 - Release the harness catch by pressing the pushbutton.
 - Pull the two-part tongue out of the harness catch.
 - Detach the two parts of the tongue and pull the two harnesses apart.

Placing the children

- ▶ Let the children get in one after the other, or lift them into the cabin.
- ▶ If necessary, adjust the head rests and the back pad by securing them to the seats at a different height with the Velcro strips.



Tip!

A balanced load distribution is particularly important in Trailer mode. If the two children differ greatly in terms of their weight, you should therefore put the heavier child in the right-hand seat. Interacting with the tow bar mounted on the left, this favourably influences handling.

Utilisation

Strapping in children



- ▶ Help the child to put his/her arms through the two side parts of the 5-point safety harness.
- ▶ Adjust the safety harness, the harnesses pads and the head rests to the size of the child.
- ▶ Pull the side harnesses to the middle and connect the two parts of the tongue.
- ▶ Push the tongue into the harness catch until it engages audibly.
- ▶ Check that all parts of the 5-point safety harness fit properly and comfortably.
- ▶ Close the cover and the associated toggle and Velcro fasteners.



Danger!

Before every journey, check that the safety harnesses and harness catches are sitting correctly. Failure of the restraining function can result in serious or even fatal injuries in the event of an accident. Do not set off until all children are wearing a bicycle helmet and are properly strapped in.

Checking the weight distribution and tow bar load

An optimum weight distribution is important for safe handling: The load's centre of gravity should always lie in the centre of the wheel axle. The tow bar load with which the tow bar lies on the coupler must be neither too great or too low in Trailer mode:

- Tow bar load too great (> 8 kg): Too much load on the coupler.
- Tow bar load too low (< 3 kg): The trailer could reduce the traction of the rear wheel through lifting and thereby cause critical situations in curves.
- Centre of gravity too far out: Loading on one side makes tipping over while cornering more likely.



Danger!

Distribute the load evenly across the width of the *Kidgoo*.

Check the tow bar load before every journey with a trailer. Tow bar loads outside the permitted range of 3 – 8 kg cause critical handling performance.

Utilisation

Checking the tow bar load

Use bathroom scales, for example, to measure the tow bar load:

- ▶ Load the *Kidgoo* in the usual way and fasten the children in.
- ▶ Do not connect the trailer to the bicycle yet.
- ▶ Place the bathroom scales next to the tow bar.
- ▶ Get onto the bathroom scales and note the weight displayed.
- ▶ Lift the tow bar's coupler pocket to the coupler height (approx. 35 cm).
- ▶ Determine the tow bar load by making a comparison with the previous measured value:
 - The weight **must be at least 3 kg more** than the measured value without the tow bar.
 - The weight **may be a maximum of 8 kg more** than the measured value without the tow bar.



Changing the tow bar load

Adjust the tow bar load by moving or reducing your baggage:

- ▶ Tow bar load over 8 kg:
Move items of baggage to the rear, e.g. from the storage space to the pouch for small items.
- ▶ Tow bar load less than 3 kg:
Move items of baggage forward, e.g. from the pouch for small items to the storage space.

Total weight too heavy

- ▶ Reduce the baggage weight in the two pouches for small items.
- ▶ Reduce the baggage weight in the storage space.
- ▶ *Kidgoo1*: Make sure that the loaded trailer weighs less than 50 kg.
Kidgoo2: Make sure that the loaded trailer weighs less than 60 kg.

Connecting the trailer to a bicycle



Danger!

Do not connect the *Kidgoo* to a bicycle until the following conditions have been fulfilled:

- The trailer is fully loaded.
- The children are wearing bicycle helmets and are properly fastened in.
- The buggy wheel has been removed.
- The tow bar load has been checked and is within the permissible range (3 – 8 kg).

Utilisation

- ▶ Remove the retaining cotter pin from the tow bar's coupler pocket.
- ▶ Push the tow bar onto the coupler on the bicycle so that the cotter pin holes in the coupler and coupler pocket are aligned.
- ▶ Insert the cotter pin into the hole and lock the cotter pin fastening.
- ▶ Check that the connection between the coupler and the tow bar is secure.
- ▶ Guide the tow bar's retaining strap through the braces of the rear wheel so that the trailer is securely connected to the bicycle frame.
- ▶ Hook the retaining strap with the carabiner hook into the eye on the tow bar. Make sure that it cannot flutter into the rear wheel's spokes during the journey.



Danger!

Always secure the tow bar to the bicycle frame with the retaining strap. This ensures that the trailer will remain connected even if the tow bar becomes detached from the coupler.

Irrespective, the coupler must always be properly mounted and the connection to the tow bar must be secured with the locked cotter pin. Otherwise the tow bar can be come detached and can be pushed into the rear wheel's spokes during braking.

Using the comfort functions

The *Kidgoo* offers some climate functions for the cabin and can be conveniently adjusted by adapting the suspension.

Using the climate functions

Adjusting the 3-in-1 canopy

The 3-in-1 canopy is comprised of an insect net, an adjustable sun visor and a weather canopy.

- The inner part of the 3-in-1 canopy must be closed during every journey because the integral insect net provides protection against insects and small stones.
- The outer skin of the 3-in-1 canopy is comprised of a durable transparent sheet and can be rolled up. It provides protection against rain and strong winds, and dissipates exhaust gases out of the cabin.

Opening the weather canopy:

- ▶ Open the zips attached on the sides which connect the weather canopy to the insect net.
- ▶ Then loosen the lower Velcro fastener.
- ▶ Roll up the weather canopy and secure the roll at the top with the two toggle fasteners.



Utilisation

Closing the weather canopy:

- ▶ Open the top toggle fasteners and unroll the weather canopy over the insect net.
- ▶ Close the both zips on the sides and the lower Velcro fastener.



Danger!

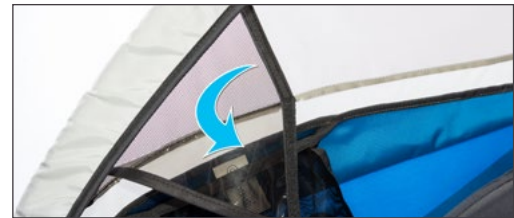
Never ride with the cover open. As a minimum, the insect net must be closed in order to provide protection against stones. In bad weather or heavy traffic, also close the weather canopy.

Using the ventilation windows

The purpose of the ventilation window of the *Kidgoo* is to improve air circulation in the cabin.

Right ventilation window:

- ▶ To open, release the Velcro fastener of the window film in the cabin and fold it down.
- ▶ To close, secure the window film with the Velcro fastener again.



Rear ventilation window:

- ▶ To open, roll up the cover and lock it with the top Velcro fastener.
- ▶ To close, secure the cover with the Velcro fastener again.



Danger!

Open the ventilation windows on hot days or in heavy traffic in order to dissipate warm air and exhaust fumes out of the cabin more quickly.

Using the sun visor

The sun visor is housed in the canopy between the insect net and the rain window. The length can be adjusted with Velcro fasteners.

- ▶ Roll up the rain window.
- ▶ Fold the sun visor to the desired length and lock it with the side Velcro fasteners.



- ▶ If necessary you can also roll up the sun visor completely and close the rain window again.

Adjusting the suspension

The leaf suspensions of the *Kidgoo* can be adjusted simply by moving the clamps. Using the scale on the leaf suspension cover, you can adjust the suspension to the respective load.



Caution!

Ensure during every journey that the suspension effect is suitable for the current load. If you can hear impact noises when moving over uneven ground, the suspension is too soft. Adjust this immediately by moving the clamps towards the wheel axle.



Danger!

Always set both leaf suspensions to the same value; different spring deflections can impact the riding performance negatively.

- ▶ Tilt back the cabin and place it on its reverse side.
- ▶ Release the red knurled screw to slide the clamp on the leaf suspension plates.
- ▶ Move the clamp using the knurled screw. Choose the new position of the clamp using the information of the adjustment scale:
 - Move the clamp right to the front (0 – 9 kg) if you have a very light child and are not transporting a lot of luggage (soft suspension).
 - Move the clamp to the back (36 – 44 kg) if you are transporting two children and a lot of luggage (hard suspension).
- ▶ Tighten the red knurled screw and set the other leaf suspension to the same value.



Storage

To store the *Kidgoo*, simply fold it up and keep it in a protected location. Pay attention also to the instructions in the chapter “Care” on page 39.



Danger!

Hands or fingers can become trapped on moving parts while setting up and folding up the cab. Carry out work carefully and keep children away from the vehicle.

- ▶ Take position behind the cabin and open the storage space cover.
- ▶ Pull both red locks at the lower horizontal bar inwards to release the rest lock.
- ▶ Hold both red locks and push the lower horizontal bar forwards.



Caution!

Only fold up the cabin after it has been cleaned both inside and outside and is completely dry.

- ▶ Fold up the cabin by pressing both sides of the rear cabin frame all the way down.
- ▶ In order to take up less space, you can also fold in the push handle and remove the wheels.



Care and maintenance

Regular care and maintenance of all parts and components helps prevent premature wear and keeps the *Kidgoo* ready for use at all times. This is particularly important when one of the following influencing factors applies to your individual conditions of use:

- Frequent use with high mileage
- Regular use close to the maximum permitted total weight
- A sporty riding style (sudden starting and braking, cornering at speed etc.)
- Excessive weather influences such as UV radiation, temperature fluctuations, moisture, contact with salt (sea water, salty air, road salt)
- Unfavourable storage conditions (lack of space, temperature fluctuations, sunlight)



Caution!

It is essential to adhere to the following care instructions and maintenance intervals. Perform the tests stated in the checklists conscientiously and at the specified times in order to use the *Kidgoo* in a technically safe condition.

Replace damaged components immediately, see [“Spare parts” on page 44](#). If necessary, contact our service department or your local specialist dealer, see [“Support information” on page 43](#).

Care



Caution!

For cleaning, use only water and domestic care agents such as detergents and textile care products, soft cloths or impregnation and silicone spray. Do not use any sharp-edged tools or cleaning agents with a scouring effect. Cleaning agents containing acids and solvents are also not permitted.

After every use

- Clean the inside of the cabin.
- Pay attention to coarse dirt and remove it immediately if possible.

After use in harsh weather conditions

- Clean the inside and outside of the cabin thoroughly.
- Care for all sliding or moving parts with silicone spray.
- Only fold up the cabin after it has been cleaned and is completely dry.

When not in use

- Store the *Kidgoo* only in places where the storage temperature falls within the range of -23 °C to maximum 65 °C.
- The storage location should be dry, well ventilated and protected against direct sunlight.
- At higher storage temperatures, you should store the wheels separately from the cabin because the tyres' rubber can cause odours.
- Use a Qeridoo folding garage if the *Kidgoo* must be kept outdoors, see [“Accessories” on page 12](#).

Maintenance intervals



Caution!

Replace corroded steel and aluminium parts immediately.

Never bend back deformed or bent aluminium parts (risk of breakage). Replace bent aluminium parts immediately.

Immediately replace plastic parts that have become porous or fragile due to the effects of the weather, for example.

Before every ride

- Check that the wheels are secure. The push-in axles must be engaged in the axle mount and it must not be possible to pull them off without pressing the rubber cap.
- Check the air pressure in the wheels. It should be in the range of 2.75 – 4.5 bar.
- Check the air pressure of the buggy wheel (maximum air pressure: 2 bar).
- Check the brake. If the brake effect is not sufficient, re-tighten the brake cable or replace the brake lining. If necessary, consult a specialist workshop.
- Check the total weight, including children and baggage.
- Check the fasteners of the cover and close them if necessary.
- Inspect all harnesses under the cabin to make sure that they are secure. They must be firmly tightened to hold the cover, backrest and cabin cover securely.
- Trailer mode: Make sure that the buggy wheel has been removed and that the requirements described in the chapter [“Connecting the trailer to a bicycle” on page 34](#) have been fulfilled.
- Buggy mode: Make sure that the buggy wheel can rotate freely. Put the hand strap of the push handle around your wrist in order to prevent accidental rolling away.
- Walker mode: Make sure that the buggy wheel is secured facing straight ahead. Put the hand strap of the push handle around your wrist in order to prevent accidental rolling away.
- Check whether the tow bar, coupler and buggy wheel and their attachments are technically OK.
- Check that all screw and cotter pin connections are secure. Retighten them, if necessary.
- Check the condition of the wheels. Replace covers and hoses in good time.

Care and maintenance

Monthly (or every 200 km)

- Check the textile cover, all fasteners, the seats and the safety harnesses for cracks, wear and missing parts.
- Inspect all frame tubes and all connecting pieces and fastening components for signs of wear and damage.

Semi-annually (or every 500 km)

- Care for all sliding and moving parts with silicone spray.
- Clean the inside and outside of the cabin thoroughly.

Every three years (or every 3000 km)

Have a full inspection carried out by a specialist workshop no later than every three years.

Appendix

Technical data

External dimensions	<i>Kidgoo1</i>	<i>Kidgoo2</i>
Length (without buggy wheel)	104 cm	104 cm
Length (with buggy wheel)	104 cm	104 cm
Length (with tow bar)	148 cm	148 cm
Width (external width from wheel to wheel)	76 cm	86 cm
Height (from ground to cabin roof)	92 cm	92 cm
Height of push handle (lowest / highest set dimension)	77 cm / 111 cm	77 cm / 111 cm
Pack size of the collapsed cabin (L x W x H)	100 cm x 65 cm x 40 cm	100 cm x 75 cm x 40 cm

Internal dimensions	<i>Kidgoo1</i>	<i>Kidgoo2</i>
Seat width (max. width at shoulder height)	55 cm	65 cm
Seat height (max. height between seat and cabin roof)	67 cm	67 cm
Legroom (max. length between backrest and foot rest)	54 cm	55 cm
Storage space under the push handle (L x W x H)	37 cm x 53 cm x 34 cm (approx. 66 l)	37 cm x 64 cm x 34 cm (approx. 80 l)

Weights	<i>Kidgoo1</i>	<i>Kidgoo2</i>
Cabin incl. push handle and tow bar (models <i>Q8000-S-LV</i> and <i>Q9000-S-LV</i>)	12,9 kg	14,1 kg
Cabin incl. push handle and tow bar (models <i>Q8000A-LV</i> and <i>Q9000A-LV</i>)	12,4 kg	13,65 kg
1 x 20" wheel / 1x buggy wheel	1,5 kg / 1 kg	1,5 kg / 1 kg
Permitted total weight	50 kg	60 kg

Wheels	<i>Kidgoo1</i> and <i>Kidgoo2</i>
Wheel	
Type	20" spoked wheel, push-in axle
Tyres	20 x 2.0 (54-406)
Hose size	20", 20 – 50 mm wide
Valve type	Car valve (Schrader)
Air pressure	2.75 – 4.5 bar
Buggy wheel	
Type	8,5"-wheel (pneumatic tyre)
Valve type	Car valve (Schrader)
Maximum air pressure	2 bar

Ambient conditions	<i>Kidgoo1</i> and <i>Kidgoo2</i>
Storage location	Dry, ventilated, no direct sunlight
Temperature range for storage	-23 °C – 65 °C

Warranty terms

Qeridoo provides a two-year warranty commencing on the purchase date for plastic and cover parts, as well as for load-bearing components. This warranty covers only material and manufacturing faults arising on correctly used and maintained vehicles. In particular, the terms and instructions in the user manual that you received with your vehicle are definitive in this respect.

Under no circumstances shall Qeridoo be liable for material damage or injury attributable to improper assembly, the intentional alteration of components or the non-observance of warning and maintenance notices. Warranty claims for defects resulting from accidents or other external forces, and caused by premature wear due to frequent and intensive use are also normally excluded.

Commercial use such as rental or use for competitive purposes is deemed improper use and is not covered by the warranty at all.

This warranty applies solely to the first owner and is non-transferable. Verbal agreements, restrictions or reservations that go beyond the terms specified here have no bearing on the validity of this warranty. The warranty regulations pertaining to your region also apply.



Tip!

To claim under the warranty, please contact our complaints management team directly by e-mail: garantie@qeridoo.de

With your complaint, please provide an exact description of the fault (if possible with photos) and a copy of the original purchase receipt. Please also state the vehicle's serial number. You can find this on the label or on the frame rod assembly in the storage space.

Support information

Please contact us directly if you have any questions about our products:

Qeridoo GmbH

Reutherstraße 3
53773 Hennef (Sieg)
Germany

URL: www.qeridoo.de
Mail: info@qeridoo.de
Fax: +49 (0) 2242 9041247

Hotline

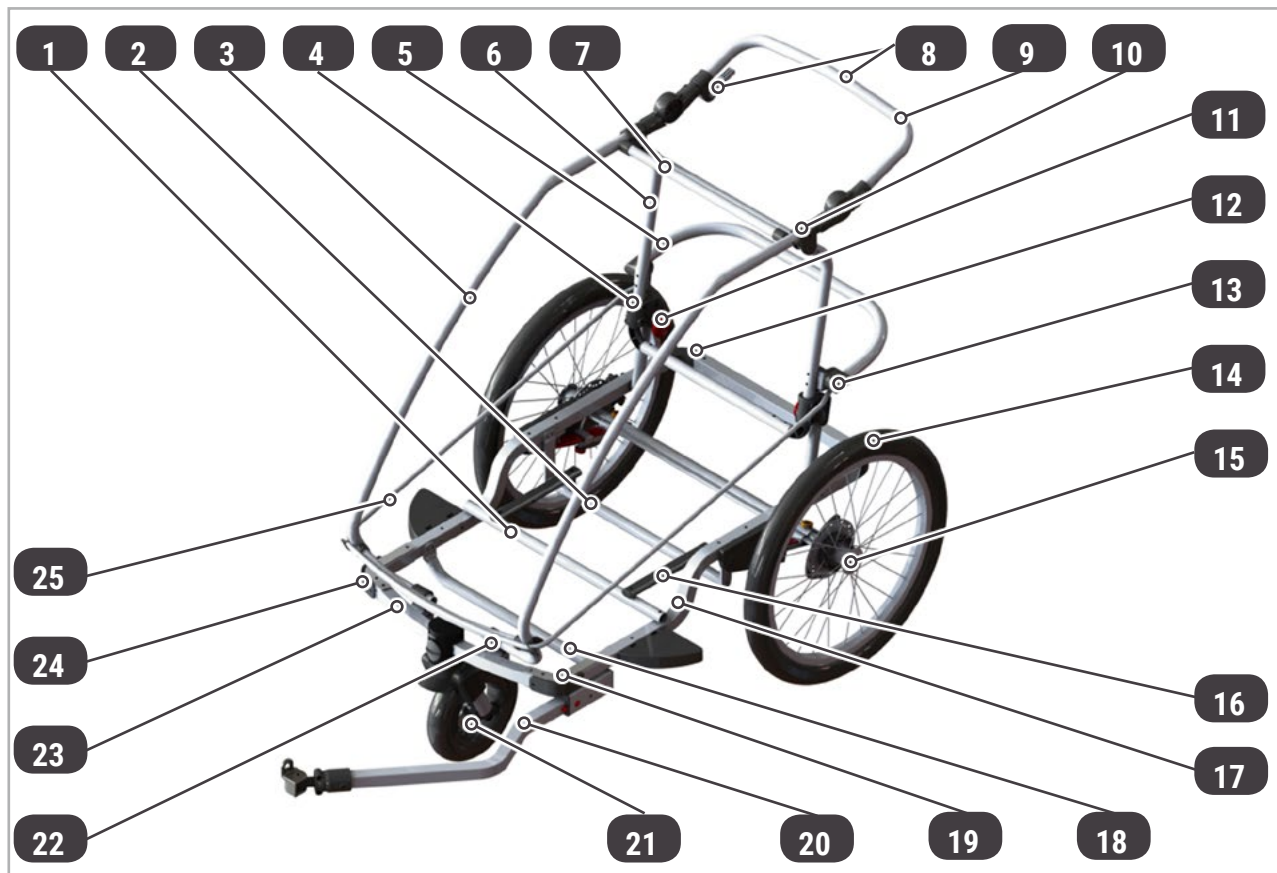
+49 (0) 2242 9041233
(Mon. – Fri.:
9 am – noon & 2 pm – 4 pm)

You can find our current **list of dealers** on the Internet at:
<http://haendersuche.qeridoo.de>

Appendix

Spare parts

(valid from 2017)



Frame components

Pos.	Article	Article No. <i>Kidgoo1</i>	Article No. <i>Kidgoo2</i>
1	Front horizontal bar of the bench seat	9R-11	9R-187
2	Rear horizontal bar of the bench seat	QR-833	8R-99
3	Roof support	1R-589	1R-589
4	Connecting piece for rear frame rod	3R-88	3R-88
5	Horizontal bar U-shape	QR-08LK	QR-K873
6	Rear frame rod	5R-99	NEW-109
7	Horizontal bar	2R-555	2R-99
8	Disc brake brake lever	BRV-49	BRV-49
8	Parking brake brake lever	SETB-789	SETB-789
9	Push handle	HGR-08OL	HGR-09OL
10	Connecting piece roof support	DAC-556-Q8	DAC-556-Q8
11	FX folding system rod	FR578	FR5899
12	Lower frame rod	6R-77	6R-77
13	Plastic cover for rear rod	PKU-Q89	PKU-Q89
14	20" wheel (with mount for disc brake)	R148-S	R148-S
14	20" wheel (without disc brake)	R147-17	R147-17
15	Rubber cap	DECK-88	DECK-88
16	Holding rod of the adapter set (Optional accessory)	H54877	H54877
17	Lateral frame rod	STR-45	STR-45

Appendix

Pos.	Article	Article No. <i>Kidgoo1</i>	Article No. <i>Kidgoo2</i>
18	Horizontal bar foot space	QT-517	QT-5999
19	Frame connecting plate	12R-552	12R-552
20	Complete tow bar with coupler	DIE-80-1-17	DIE-900-1-17
21	8.5" buggy wheel, complete (with wheel suspension and quick-release clamp)	BG-MW-17	BG-MW-17
22	Plastic holder for roof frame rods front	PLK-Q8	PLK-Q8
23	Front frame rod	10R-74	10R-944
24	Design cover bottom frame	SEIT-Q58	SEIT-Q58
25	Border rod	11R-879	11R-888

Other spare parts

	Pennant, complete (incl. extension rod and centre piece) Art. no.: 121256		Head rest Art. no.: KOP-Q8
	Pennant holder, centre piece Art. no.: WIM-H-UN		Back pad Art. no.: RUCK-Q8 (<i>Kidgoo1</i>) Art. no.: kis-Q9S (<i>Kidgoo2</i>)
	Light reflector, white Art. no.: LRF-Weiss		Harness pad set Art. no.: BGH-Q254
	Light reflector, red Art. no.: LRF-ROT		Harness catch Art. no.: GUR-69
	Light reflector, yellow (for wheel spokes) Art. no.: LRF-Gelb		Harness buckle Art. no.: GRT-899
	Cover, complete (blue, violet, green, yellow, anthracite) Art. no.: BEZ-KD-8-17 (<i>Kidgoo1</i>) Art. no.: BEZ-KD-9-17 (<i>Kidgoo2</i>)		Harness fastener Art. no.: SCHL-QH8
	Cover, top part (blue, violet, green, yellow, anthracite) Art. no.: VER-KD-8-17 (<i>Kidgoo1</i>) Art. no.: VER-KD-9-17 (<i>Kidgoo2</i>)		Toggle fastener with strap Art. no.: KÖRD-55
	Backrest incl. 5-point safety harness (anthracite) Art. no.: RÜCK-KD-8-17 (<i>Kidgoo1</i>) Art. no.: RÜCK-KD-9-17 (<i>Kidgoo2</i>)		Complete tow bar with coupler Art. no.: HB17-80 (<i>Kidgoo1</i>) Art. no.: HB17-90 (<i>Kidgoo2</i>)

Appendix



Retaining strap of the tow bar
incl. cotter pin
Art. no.: GURB-887



Leaf suspension cover
Art. no.: R147-FF



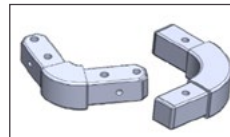
8.5" Buggy wheel
(Pneumatic tyre with car valve)
Art. no.: BG-589L



Brake lever
Art. no.: BRV-49



Quick-release clamp (push
handle)
Art. no.: HGR-0877L



Connecting piece bottom
frame
Art. no.: S-HH-Q8



20" hose
Art. no.: 789SCH



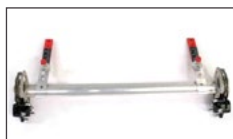
Design cover bottom frame
Art. no.: SEIT-Q58



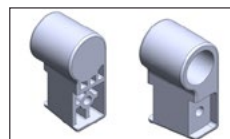
Push-in axle / hub axle
Art. no.: ZTG-2016



Connecting piece roof support
Art. no.: DAC-556-Q8



Wheel axle complete with disc
brakes
Art. no.: ACS-08L-S (*Kidgoo1*)
Art. no.: ACS-09L-S (*Kidgoo2*)



Plastic holder front for roof
frame rods
Art. no.: PLK-Q8



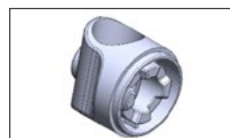
Brake cable incl. brake lever
Art. no.: BRV-888 (*Kidgoo1*)
Art. no.: BRV-899 (*Kidgoo2*)



Connecting piece for rear rod
Art. no.: 3R-88



Leaf suspension set (2 plates)
Art. no.: BLA-Q8



Plastic cover for rear rod
Art. no.: PKU-Q89



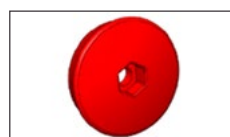
Leaf suspension clamp
complete
Art. no.: BDR-5811



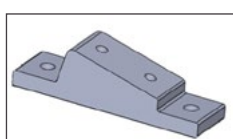
Tube cap
Art. no.: RDLL-Q8



Knurled screw of the leaf
suspension clamp
Art. no.: MUT-Q8



Folding handle (lock of the FX
folding system)
Art. no.: FRJ-Q8



Leaf suspension mount
(aluminium block)
Art. no.: AL589



Screw set
(1 set with all the required
assembly screws)
Art. no.: SCHR-Q8

Appendix



Spacer

Art. no.: DIST-555



Wheel suspension (buggy wheel)

Art. no.: BGH-K-17



Wheel cover

Art. no.: RDSH

Qeridoo GmbH

Reutherstraße 3, 53773 Hennef (Sieg)

Germany

www.qeridoo.de

info@qeridoo.de



get on track