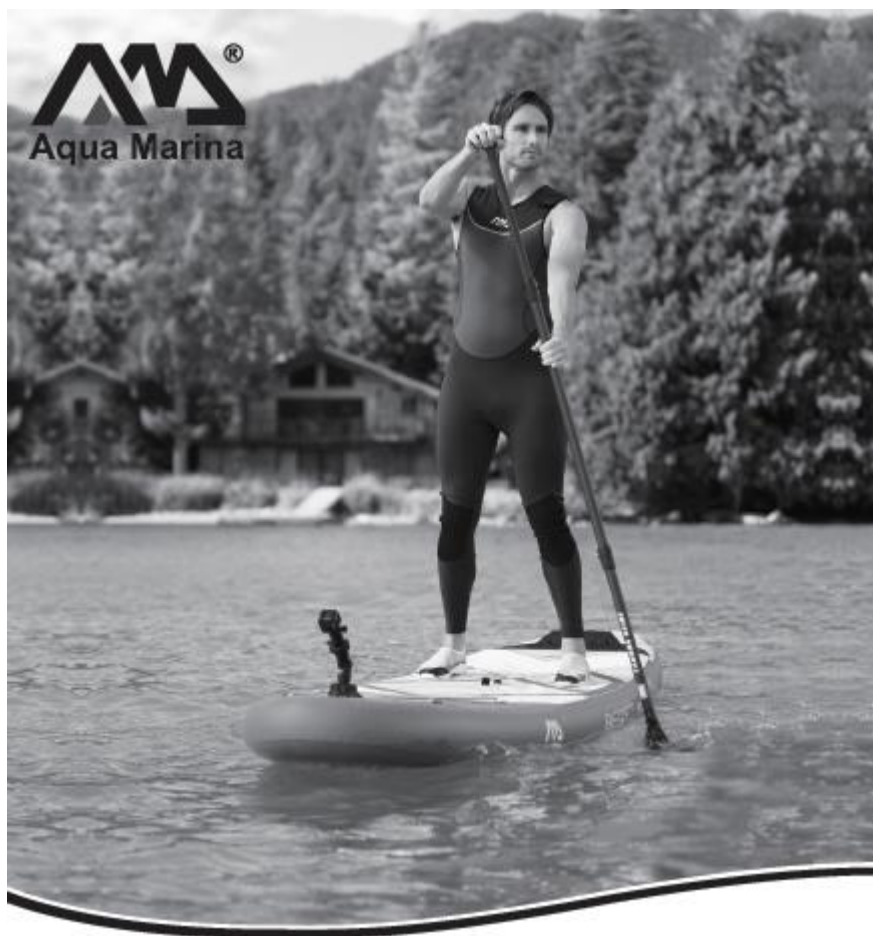


USER MANUAL – EN

Inflatable Stand Up Paddleboard



CONTENTS

GENERAL PADDLING INFORMATION.....	3
SAFETY	3
WARNING LABELS.....	3
PARTS LIST	5
RAPID RIVER ISUP	6
SPECIALTY ISUP	6
DRIFT FISHING ISUP	6
PERSPECTIVE TRAINING ISUP	7
PEACE YOGA ISUP	7
MEGA GROUP ISUP	7
SPECIFICATIONS.....	8
INSTRUCTION FOR ASSEMBLING AND DISASSEMBLING.....	9
INFLATABLE VALVE SEALING WASHER BLOW-OUT	11
LEAK DETECTION AND REPAIR.....	12
PADDLE ASSEMBLY	13
OPTIONAL ACCESSORIES	13
TERMS AND CONDITIONS OF WARRANTY, WARRANTY CLAIMS.....	15

WARNING! For your own safety and that your equipment, make sure to take the following precautions. Failure to follow warning notices and instruction may result in property damage, serious injury or death.

GENERAL PADDLING INFORMATION

This manual has been compiled to help you operate your inflatable Stand Up Paddleboard (Hereinafter referred to as ISUP) with safety and pleasure. It contains details of the ISUP, the equipment supplied, and information on their operation. Please read it carefully and familiarize yourself with the ISUP before using it.

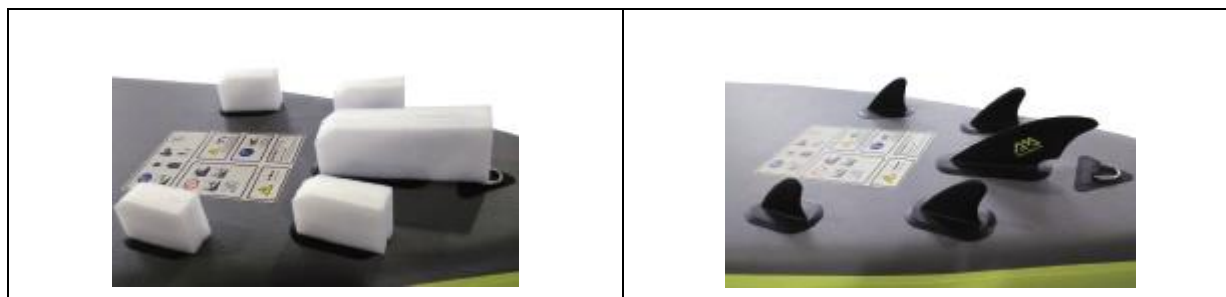
SAFETY

Paddle sports can be dangerous and physically demanding. Users of this product should understand participating in stand-up paddling result in serious injury or death. Observe all applicable watercraft laws and use common sense.

Before using the ISUP, read carefully the warning labels printed on the back/front of the board.




NOTE:

- Don't throw away the foam covers that come with the fins.
- When you deflate and fold the board, we recommend using these foam covers to protect the fins from scratching or bending damages.
- Avoid pressing the fins when the SUP is not in use. Heavy pressure may cause slight bending.
- Slight bending can be repaired. Use hair drier to heat the fin a little bit. The fin will restore its original shape automatically. Proper sunshine will do the same.



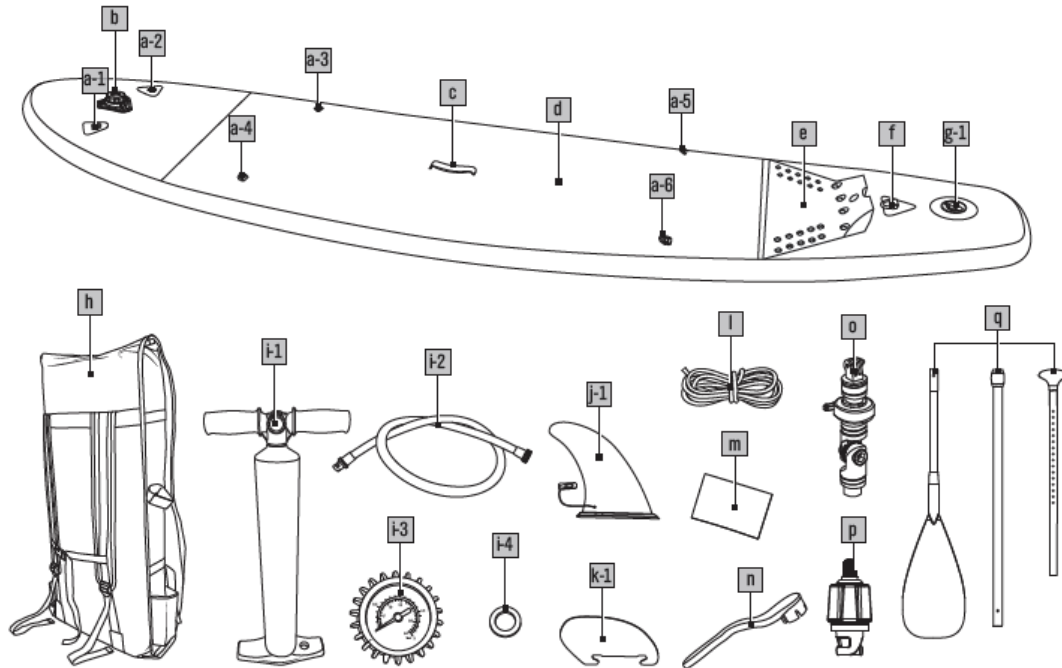
WARNING LABELS

	<p>Mandatory instructions</p> <ul style="list-style-type: none"> • Wear personal flotation device. • Read instructions first. • Fully inflate all air chambers. • Numbers of users, one adult. • Max. load capacity: please refer to adequate page. • For example: Fusion BT-18FUP: 140 kg (308lbs) • Safe distance to shore 150 m
--	--

	Prohibition instructions <ul style="list-style-type: none"> • Don't use in white water (except BT-18RP) • Don't use in braking waves. • Don't use in offshore current. • Don't use in offshore wind. • Not for children 14 years of age and below.
	Attention/Danger/Warning <ul style="list-style-type: none"> • Design working pressure. • No protection against drowning.
	Mandatory instructions <ul style="list-style-type: none"> • Swimmers only. • Always supervise children in water.
CN-ORP <hr/> Item No.: BT-18FUP Oriental Recreation Products (Shanghai) Co., Ltd. 1699 Daye Road, Fengxian Shanghai, China 201402	Product serial number <ul style="list-style-type: none"> • Item No. • Company information.

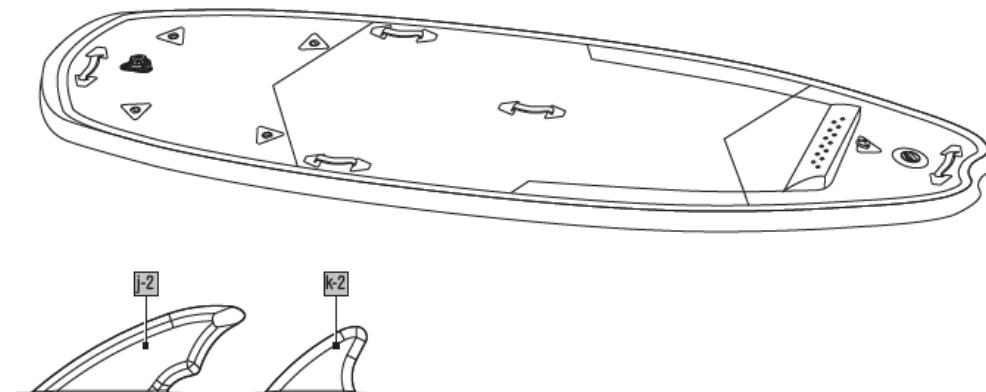
PARTS LIST

Basic all around ISUP/ Advanced all around ISUP



a(1-4)	D-rings	i(1-4)	JOMBO 23.5" high-pressure pump, inflation hose, pressure gauge, seal ring
a(5-6)	D-rings for the seat attaching (Breeze, Vapor, Perspective, Thrive only)	j-1	Slide-in center fin
b	Action camera mount base (Perspective excluded)	k-1	Side fin (Breeze, Vapor, Super Trip)
c	Heavy-duty built in carry handle	l	Cargo bungee cords
d	Large EVA deck provides grip and comfort	m	Repair kit
e	Kick pad (Advanced ISUP)	n	Wrench
f	Stainless steel D-ring for attaching * safety leash (optional)	o	Action Camera extension boom (from limited models)
g-1	High pressure recessed valve for quick and easy inflation and deflation	p	Valve adaptor
h	MAGIC backpack	q	iSUP paddle (All around iSUP, Drift, Peace only)

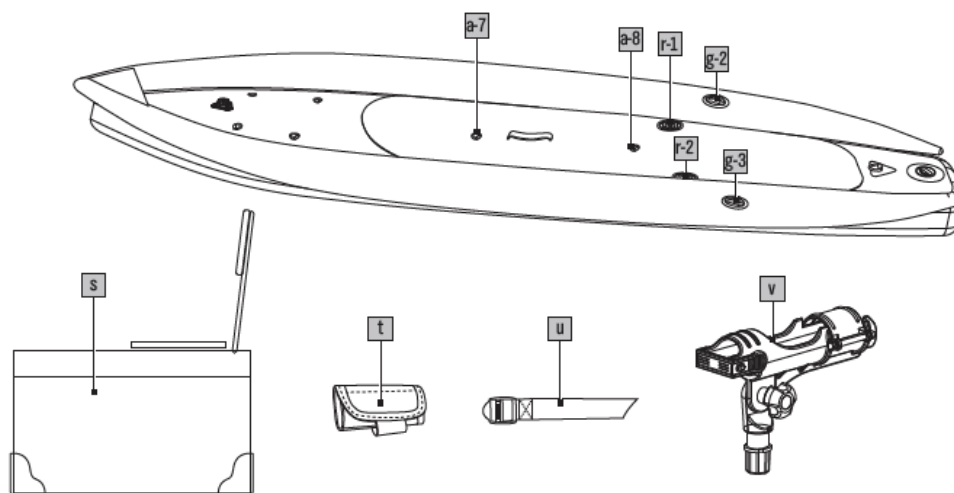
RAPID RIVER ISUP



j-2	White water fin
k-2	Side fin

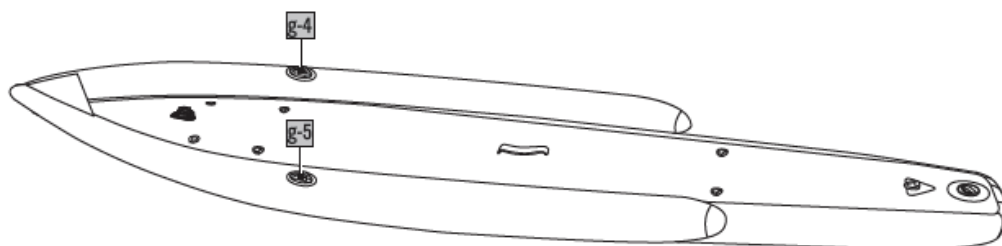
SPECIALTY ISUP

DRIFT FISHING ISUP



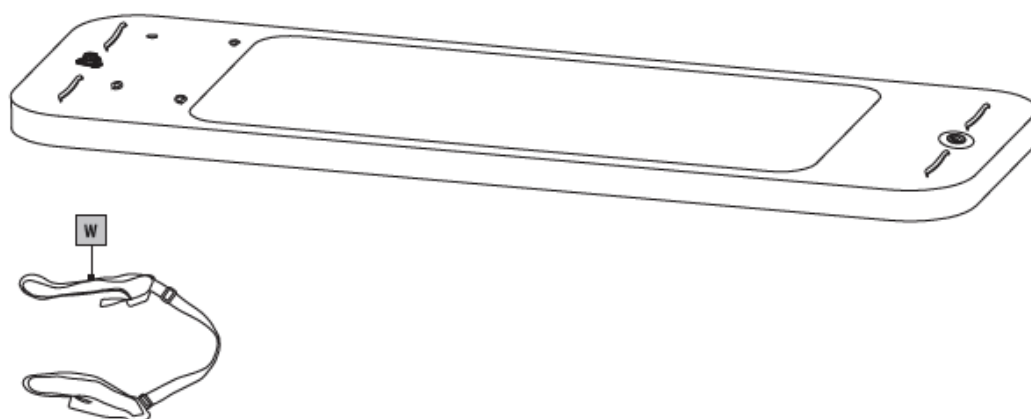
a(7-8)	D-ring for attaching fishing box	t	Paddle holder
g(2-3)	Side chambers. Air pressure up to 3 psi.	u	Straps
r(1-2)	Fishing rod holder.	v	Fishing rod holder
s	Standard KOOL fishing cooler box with high back seat.		

PERSPECTIVE TRAINING ISUP



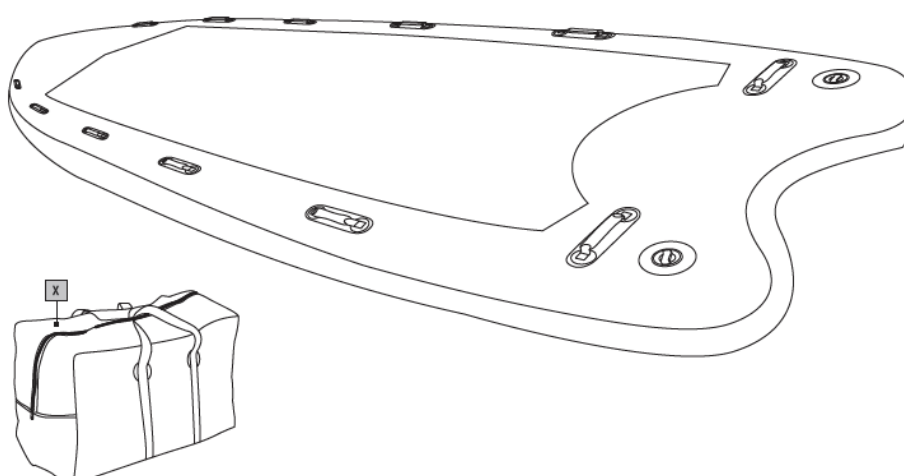
g(4-5)	Side chambers. Air pressure up to 5 psi.
--------	--

PEACE YOGA ISUP



w	Board strap
---	-------------

MEGA GROUP ISUP



x	Carry bag
---	-----------

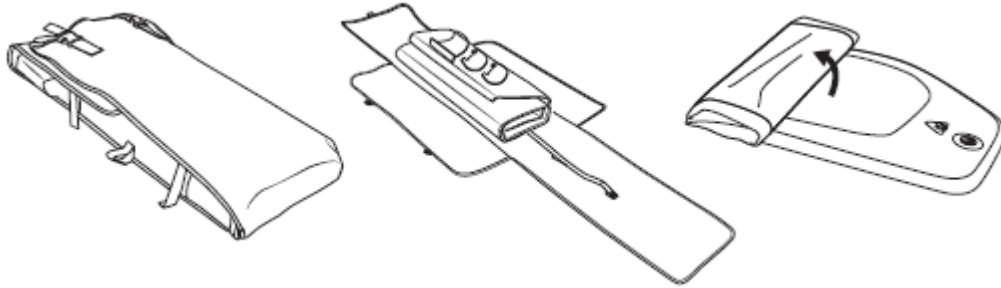
SPECIFICATIONS

Model	Length	Width	Thickness	Max. Loading Capacity	Recom. Payload	Max. air pressure
Vibrant BT-18VI	266cm (8'7")	75cm (30")	10cm (4")	70kg (154lbs)	60kg (132lbs)	15psi
Perspective BT-18PE	300cm (9'9")	97cm (38")	10cm (4")	100kg (220lbs)	80kg (176lbs)	15psi / 5psi
Breeze BT-18BRP	300cm (9'9")	75cm (30")	10cm (4")	95kg (209lbs)	75kg (165lbs)	15psi
Vapor BT-18VAP	330cm (10'10")	75cm (30")	10cm (4")	115kg (253lbs)	80kg (176lbs)	15psi
Fusion BT-18FUP	330cm (10'10")	75cm (30")	15cm (6")	140kg (308lbs)	95kg (209lbs)	15psi
Monster BT-18MOP	365cm (12')	82cm (32")	15cm (6")	160kg (352lbs)	120kg (265lbs)	15psi
Thrive BT-17TH	300cm (9'9")	75cm (30")	15cm (6")	120kg (265lbs)	90kg (198lbs)	15psi
Echo BT-18EC	320cm (10'6")	81cm (32")	10cm (4")	115kg (254lbs)	80kg (176lbs)	15psi
Beast BT-18BE	320cm (10'6")	81cm (32")	15cm (6")	143kg (315lbs)	95kg (209lbs)	15psi
Magma BT-17MA	330cm (10'10")	75cm (30")	15cm (6")	140kg (308lbs)	95kg (209lbs)	15psi
Rapid BT-18RP	289cm (9'6")	84cm (33")	15cm (6")	130kg (287lbs)	110kg (243lbs)	18psi
Super Trip BT-18ST	370cm (12'2")	87cm (34")	15cm (6")	210kg (463lbs)	180kg (397lbs)	15psi
Race BT-18RA	427cm (14')	71cm (28")	15cm (6")	160kg (352lbs)	110kg (243lbs)	15psi
Drift BT-18DRP	330cm (10'10")	97cm (38")	15cm (6")	130kg (287lbs)	110kg (243lbs)	15psi / 3psi
Peace BT-18PCP	300cm (9'9")	100cm (39")	15cm (6")	170kg (375lbs)	125kg (276lbs)	15psi
Mega BT-18ME	550cm (18'1")	152cm (60")	20cm (8")	650kg (1433lbs)	500kg (1102lbs)	8psi

INSTRUCTION FOR ASSEMBLING AND DISASSEMBLING

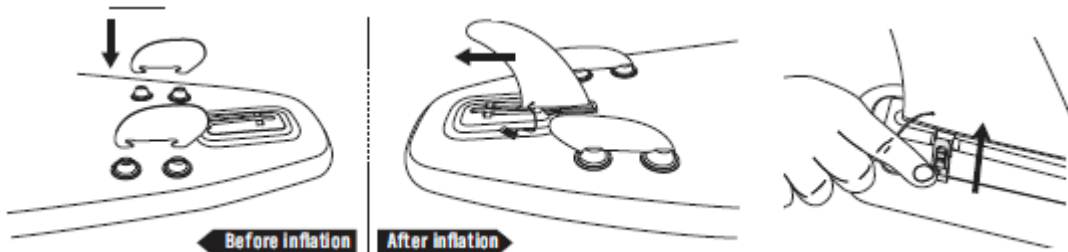
- 1) Unfold the board from the packaging box.

Choose a smooth and clean surface to unfold your board.



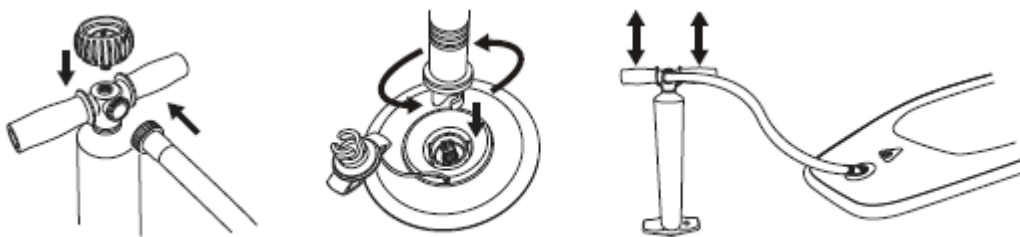
- 2) Side fin installation. Before inflation, insert two side fins first (Breeze, Vapor, Super Trip).

Slide in center fin installation: Once the board is inflated, slide in the large center fin to the fin base and insert the push-in pin.



- 3) Inflation

- Attach the pressure gauge and the pump hose to the gauge housing on the pump and secure it tightly.
- Unscrew the valve cap, push button in and turn in clockwise to make sure that the valve is in the "Pin Out" position.
- Start pumping air into the board by sliding the pump piston up and down, inflate until you reach the required pressure.
- TIP: If the pump piston starts to squeak, apply some spray silicone on the piston shaft.



WARNING: Minimum 12 psi for proper ISUP (except Mega) operation and maximum of 15 psi. Do not overinflate beyond 15 psi (8 psi for Mega, 18 psi for Rapid). This will void your warranty.

Tips:

- After 2 or 3 days there may be small decrease of pressure due to the temperature change. If so, add a few pumps of air.
- Before undertaking a long paddle, inflate the board for a full 24 hours to make sure the board is airtight. If you are seeing a consistent decrease in air pressure, follow the instructions for leak detection in the board repair section of this manual.

- Don't overinflate the board. A max. pressure of 15 psi is adequate. The easiest gauge of a good working pressure is to have the chambers inflated to a firm pressure when you press on them.
- Don't pump to a high pressure and let the board sit out in the hot sun. If the board is going to be in a warm environment, slightly deflate the board and allow the heat from the sun to increase the internal pressure. When paddling, the colder temperature of the water may cause a slight loss in chamber pressure. It is a good idea to carry a pump without you so that you can add some air to the chambers if necessary.

INSTRUCTIONS FOR CARE AND STORAGE

Aqua Marina has applied premium fabric to provide superior protection from ultraviolet light. However, to ensure extra years of flexibility and bright colors, avoid storing the board where it will be exposed to weather or in direct sunlight. Please review the following list for storage and board care tips.

- Before storing, hose off the board and let it dry completely to prevent mildew build up.
- If used in sea water, wash the board with fresh water before storing.
- Don't use harsh chemicals for cleaning. Most dirt can be removed with a mild soap and fresh water.
- You may store the board inflated or deflated. If you deflate the board, we recommend that you store it in the protective bag that came with the board.
- If storing the board outdoors, raise it up off the ground and cover it with a tarp to prevent exposure to the sun.
- Hanging the board is not recommended.
- Don't store it in extreme conditions (i.e. above 66°C/150°F or below -23°C/10°F).
- Store it in a clean and dry place.

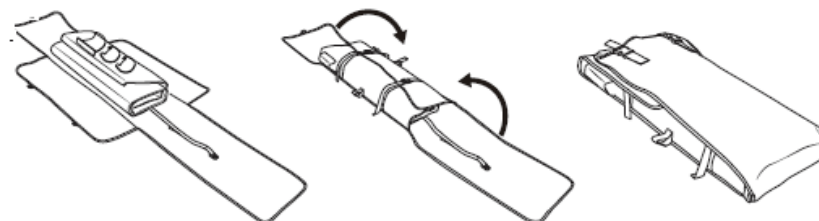
Board deflation

- Clear any water or debris out of the valve areas.
- Slowly press down on the valve stem to start letting air out of the board. There will be an initial burst of air, but that will slow down very quickly. Once the air flow has slowed down, press the valve stem all the way down and turn it clockwise to lock it into the OPEN position.



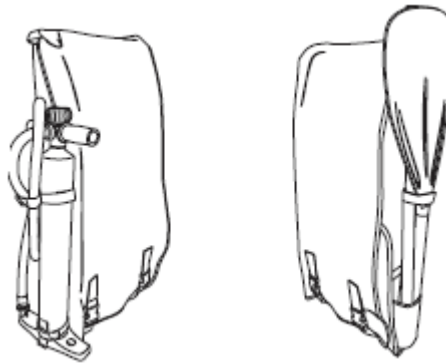
Board folding steps

- Follow the diagram for the best folding procedures.
- **NOTE:** To keep the board in good condition, please, don't fold the kick pad.



Magic backpack

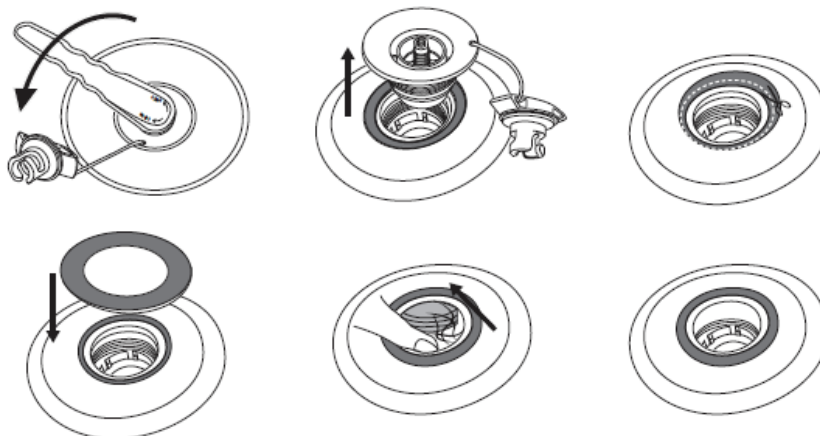
- Perfect for storing any carrying iSUP.
- Side pockets are designed for pump and paddle.



INFLATABLE VALVE SEALING WASHER BLOW-OUT

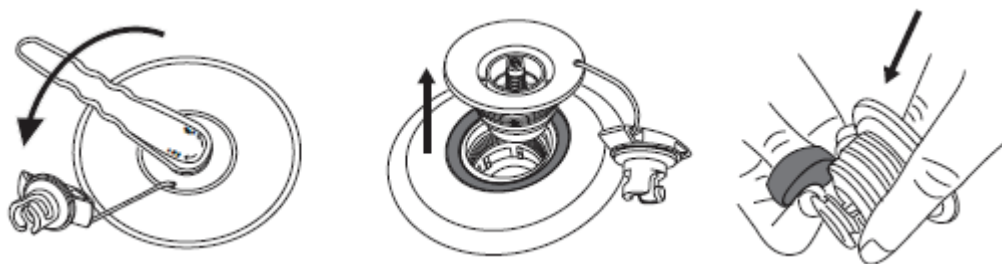
For leakage on the valve cover

- a) Use wrench to disassemble the valve and check the position.
- b) Valves position deviates:
 - i. Find out the correct position.
 - ii. Cut out the extra trim edge.
 - iii. Put an extra seal ring on top.
 - iv. Assemble the valve back and charge to recommended air pressure.
- c) No deviation
 - i. Clean the thread on the surface of the base or inner part.
 - ii. Assemble the valve back.
 - iii. Inflate the SUP until it is flat.
 - iv. Tighten the valve further and inflate to recommended air pressure.



For air leak from inside the valve

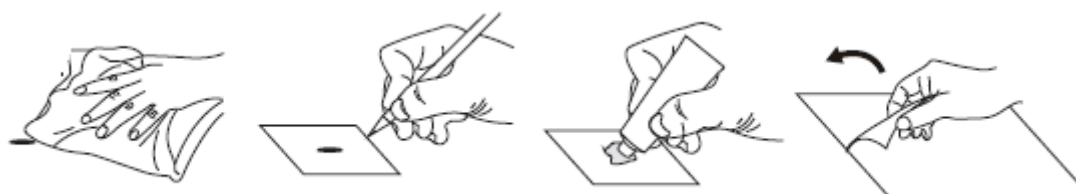
- Disassemble the valve and check the position.
- Disassemble the sealing rubber on the valve and clean both.
- Assemble the valve back.
- Inflate the SUP until it is flat.
- Tighten the valve further and inflate to recommended air pressure.
- **NOTE:** Correctly use the wrench by pressing it with one hand on top.



LEAK DETECTION AND REPAIR

A leaking valve is rare, but if you find a leak we can send you a replacement valve. To locate a leak, we recommend mixing soap and water in a spray bottle, spray around the valve. If you see bubbles forming, check your valve seating and base and be sure the valve insert is screwed tightly. If the board is losing air and all the valves are good, it probably has a small puncture.

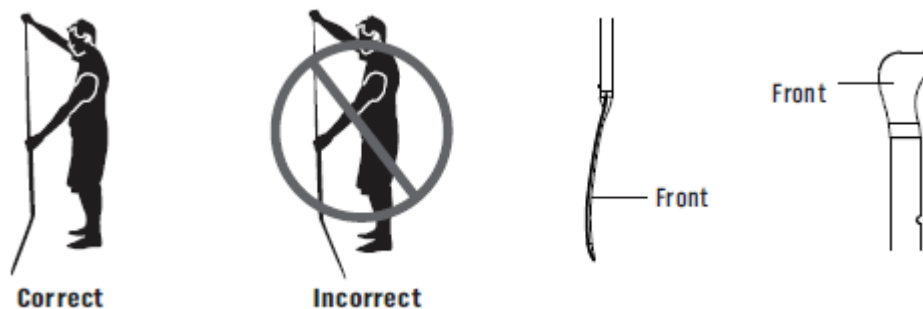
Small punctures can be repaired easily and permanently. Spray around the board until air bubbles become visible and mark the position of the leak.



- Punctures less than 1/8" in size can be repaired simply without a patch. Deflate your board, then clean and dry the area to be repaired. Apply small drop of glue to cover puncture and let it dry for 12 hours.
- Cut a piece of repair material large enough to overlap the damaged area by approximately 1.5 cm (1/2") and around the edges.
- Apply glue to the under side of the patch and around the area to be repaired. Too much glue will interfere with proper repair.
- Allow adhesive to become tacky for 2-4 minutes and then starting at one corner and working outward, carefully apply the patch to the repair area using very firm pressure. Rub the entire patch area and edges of the patch using very firm pressure. Allow to cure at least 12 hours before inflating it.

PADDLE ASSEMBLY

How to paddle a SUP

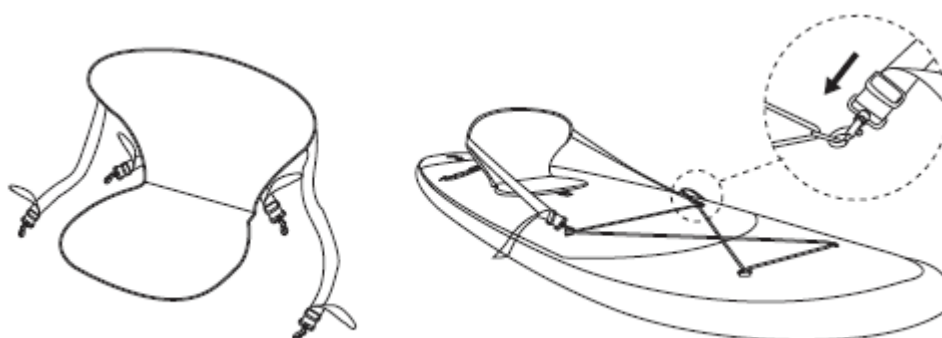


- Assume a comfortable stand with your feet positioned roughly shoulder width apart. Knees slightly bent in a relaxed upright stance, shoulders back, looking straight ahead.
- Paddle grip: place your top hand on the end of handle and your bottom hand. Approximately 61 cm (24") down shaft of paddle. Paddle in a comfortable forward motion with arms slightly bent.
- To turn left concentrate paddling on the right-hand side of the boards to turn right concentrate paddling on the left-hand side of the board.
- It is suggested letting the paddle dry completely after using in order to keep the paddle in good condition.

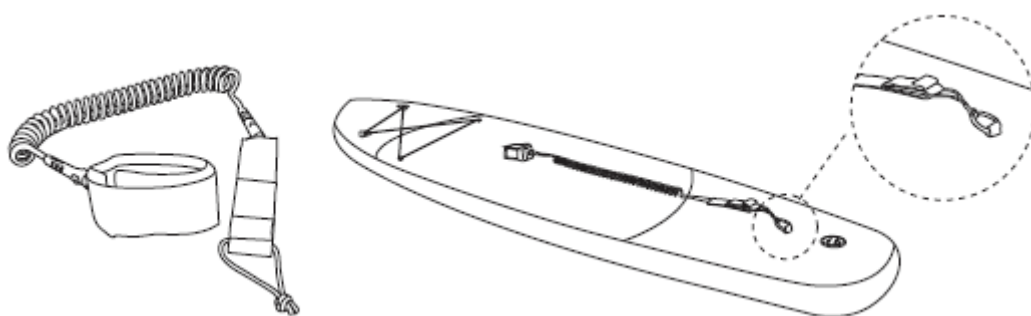
	SPORTS II B0302518 Adjustable aluminium iSUP paddle
	DUAL-TECH B0302127P 2in1 iSUP and kayak paddle
	STANDARD B0302519 Adjustable aluminium iSUP paddle
	CARBON GUIDE B0302520 Carbon/Fiberglass iSUP paddle
	CARBON PRO B0302521 Carbon iSUP paddle

OPTIONAL ACCESSORIES

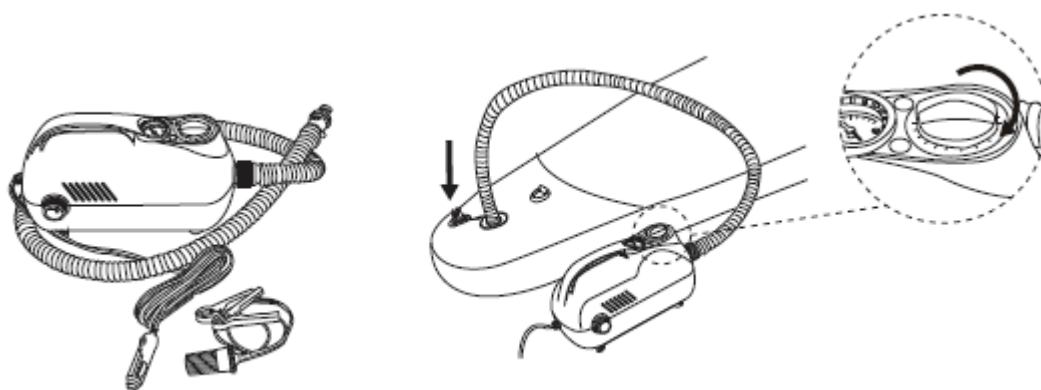
Removable seat – compatible with Breeze/Vapor/Thrive/Perspective only.



Coil leash 8'7 mm



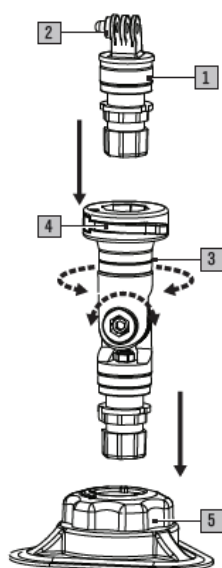
Super 12V ISUP and inflatable water sport items electric pump



Action camera mount kit contents

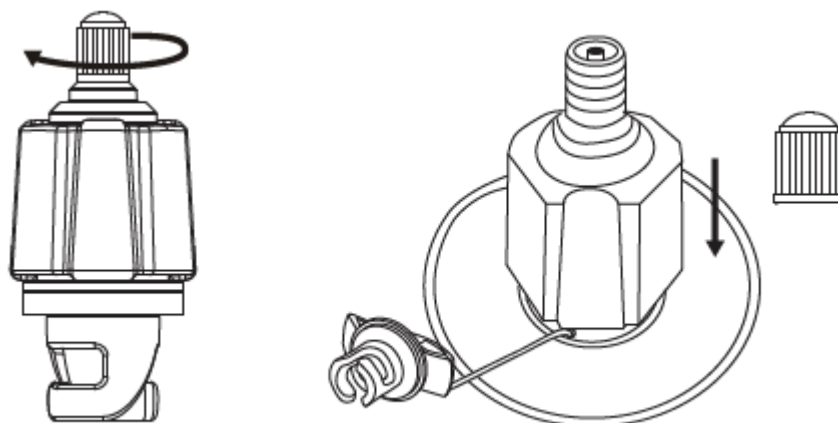
- 1) Camera support cage
- 2) Camera adaptor
- 3) Camera support connecting rod
- 4) Rotation lock to fix the support cage
- 5) Mount base with rotation cap (pre-assembled to some AM ISUP models)

Action camera can be connected by this adaptor. Use screw to tighten it.



Inflation valve adaptor

Connect and tighten the joint to the compressor or tire pump with Schrader valve. Insert the adaptor into the high-pressure valve on the ISUP, rotate and make it tight.



WARNING: This product is designed in accordance with standards for a specific use. Any modifications or transformations higher than that indicated by the manufacturer could result in serious risk for the user and will void the warranty.

TERMS AND CONDITIONS OF WARRANTY, WARRANTY CLAIMS

General Conditions of Warranty and Definition of Terms

All Warranty Conditions stated hereunder determine Warranty Coverage and Warranty Claim Procedure. Conditions of Warranty and Warranty Claims are governed by Act No. 40/1964 Coll. Civil Code, Act No. 513/1991 Coll., Commercial Code, and Act No. 634/1992 Coll., Consumer Protection Act, as amended, also in cases that are not specified by these Warranty rules.

The seller is SEVEN SPORT s.r.o. with its registered office in Borivojova Street 35/878, Prague 13000, Company Registration Number: 26847264, registered in the Trade Register at Regional Court in Prague, Section C, Insert No. 116888.

According to valid legal regulations it depends whether the Buyer is the End Customer or not.

“The Buyer who is the End Customer” or simply the “End Customer” is the legal entity that does not conclude and execute the Contract in order to run or promote his own trade or business activities.

“The Buyer who is not the End Customer” is a Businessman that buys Goods or uses services for the purpose of using the Goods or services for his own business activities. The Buyer conforms to the General Purchase Agreement and business conditions to the extent specified in the Commercial Code.

These Conditions of Warranty and Warranty Claims are an integral part of every Purchase Agreement made between the Seller and the Buyer. All Warranty Conditions are valid and binding, unless otherwise specified in the Purchase Agreement, in the Amendment to this Contract or in another written agreement.

Warranty Conditions

Warranty Period

The Seller provides the Buyer a 24 months Warranty for Goods Quality, unless otherwise specified in the Certificate of Warranty, Invoice, Bill of Delivery or other documents related to the Goods. The legal warranty period provided to the Consumer is not affected.

By the Warranty for Goods Quality, the Seller guarantees that the delivered Goods shall be, for a certain period of time, suitable for regular or contracted use, and that the Goods shall maintain its regular or contracted features.

The Warranty does not cover defects resulting from (if applicable):

- User's fault, i.e. product damage caused by unqualified repair work, improper assembly, insufficient insertion of seat post into frame, insufficient tightening of pedals and cranks
- Improper maintenance
- Mechanical damages
- Regular use (e.g. wearing out of rubber and plastic parts, moving mechanisms, joints etc.)
- Unavoidable event, natural disaster
- Adjustments made by unqualified person
- Improper maintenance, improper placement, damages caused by low or high temperature, water, inappropriate pressure, shocks, intentional changes in design or construction etc.

Warranty Claim Procedure

The Buyer is obliged to check the Goods delivered by the Seller immediately after taking the responsibility for the Goods and its damages, i.e. immediately after its delivery. The Buyer must check the Goods so that he discovers all the defects that can be discovered by such check.

When making a Warranty Claim the Buyer is obliged, on request of the Seller, to prove the purchase and validity of the claim by the Invoice or Bill of Delivery that includes the product's serial number, or eventually by the documents without the serial number. If the Buyer does not prove the validity of the Warranty Claim by these documents, the Seller has the right to reject the Warranty Claim.

If the Buyer gives notice of a defect that is not covered by the Warranty (e.g. in the case that the Warranty Conditions were not fulfilled or in the case of reporting the defect by mistake etc.), the Seller is eligible to require a compensation for all the costs arising from the repair. The cost shall be calculated according to the valid price list of services and transport costs.

If the Seller finds out (by testing) that the product is not damaged, the Warranty Claim is not accepted. The Seller reserves the right to claim a compensation for costs arising from the false Warranty Claim.

In case the Buyer makes a claim about the Goods that is legally covered by the Warranty provided by the Seller, the Seller shall fix the reported defects by means of repair or by the exchange of the damaged part or product for a new one. Based on the agreement of the Buyer, the Seller has the right to exchange the defected Goods for a fully compatible Goods of the same or better technical characteristics. The Seller is entitled to choose the form of the Warranty Claim Procedures described in this paragraph.

The Seller shall settle the Warranty Claim within 30 days after the delivery of the defective Goods, unless a longer period has been agreed upon. The day when the repaired or exchanged Goods is handed over to the Buyer is considered to be the day of the Warranty Claim settlement. When the Seller is not able to settle the Warranty Claim within the agreed period due to the specific nature of the Goods defect, he and the Buyer shall make an agreement about an alternative solution. In case such agreement is not made, the Seller is obliged to provide the Buyer with a financial compensation in the form of a refund.



SEVEN SPORT s.r.o.

Registered Office:	Borivojova 35/878, 130 00 Praha 3, Czech Republic
Headquarters:	Delnicka 957, 749 01 Vitkov, Czech Republic
Warranty & Service Centre:	Cermenska 486, 749 01 Vitkov, Czech Republic
CRN:	26847264
VAT ID:	CZ26847264
Phone:	+420 556 300 970
E-mail:	eshop@insportline.cz reklamace@insportline.cz servis@insportline.cz
Web:	www.insportline.cz

SK

INSPORTLINE s.r.o.

Headquarters, Warranty & Service centre: Elektrická 6471, 911 01 Trenčín, Slovakia

CRN: 36311723

VAT ID: SK2020177082

Phone:

+421(0)326 526 701

E-mail:

objednavky@insportline.sk

reklamacie@insportline.sk

servis@insportline.sk

Web:

www.insportline.sk

Date of Sale:

Stamp and Signature of Seller: