



IN3948 POWER TOWER

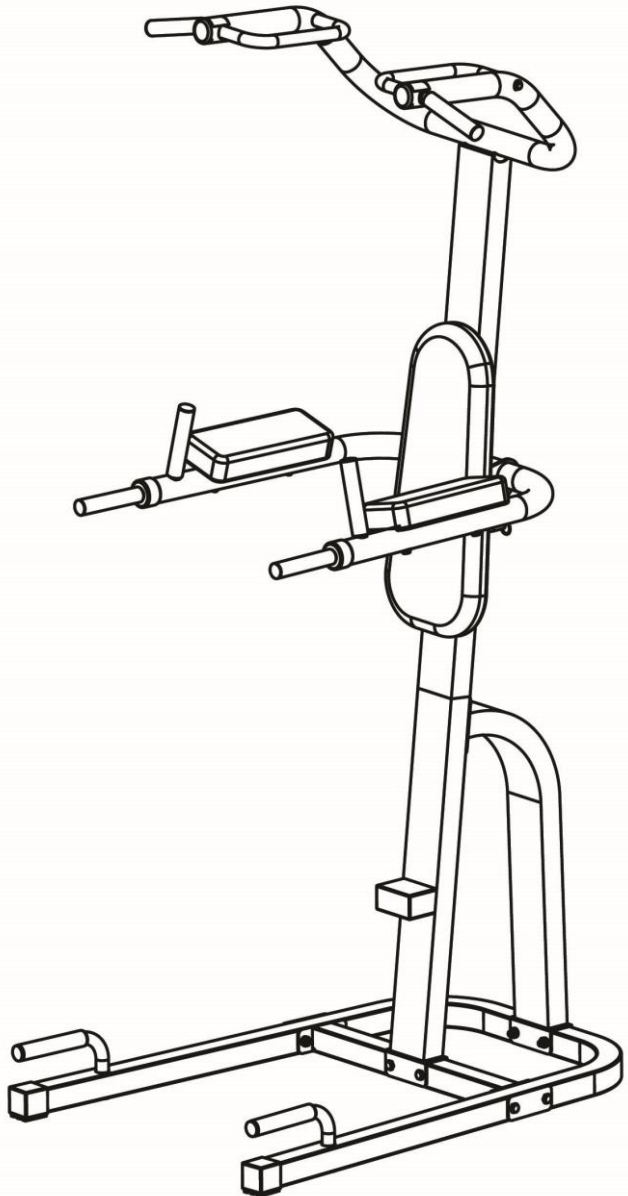
CAUTION:

WARNING: Do not use this product without a physician's approval.
Do not let children use this product unsupervised.
Read all instructions carefully before using.
Tighten all bolts before using equipment.
Leave adequate space to exercise

CAUTION:

Maximum Weight Limit is 300 lbs.

Photo may differ from actual product.



BEFORE BEGINNING ASSEMBLY

CAUTION:

Maximum Weight Limit is 300 lbs.

Take a few moments to familiarize yourself with the specific parts and hardware included with your product. Make sure all the parts and hardware are included in the carton and examine them for any damage that may have occurred in transport. Some parts may be pre-assembled and pre-installed.

CAUTION WARNING:

Before starting any exercise program, consult your physician.
Read all instructions very carefully before using equipment
Tighten all bolts securely before using equipment

Product Warranty Limited Liability

We warrants that this product will be free from defects in materials and workmanship for a period of ninety (90) days from date of purchase. This warranty applies only to the original purchaser when purchase of the product is from an authorized retailer and is for personal or household use, but not when the sale is for commercial use. This warranty is not transferable.

EXCEPT FOR THE LIMITED EXPRESS WARRANTY STATED HEREIN, WE DISCLAIMS ALL OTHER EXPRESS OR IMPLIED WARRANTIES, INCLUDING BUT NOT LIMITED TO IMPLIED WARRANTIES OF MERCHANTABILITY AND FITNESS FOR A PARTICULAR PURPOSE. SOME STATES DO NOT ALLOW LIMITATIONS ON HOW LONG AN IMPLIED WARRANTY LASTS, SO THE ABOVE LIMITATIONS MAY NOT APPLY TO YOU.

We will not be liable for any loss or damage, including incidental or consequential damages of any kind, whether based upon warranty, contract or negligence and arising in connection with the sale, use or repair of the product.

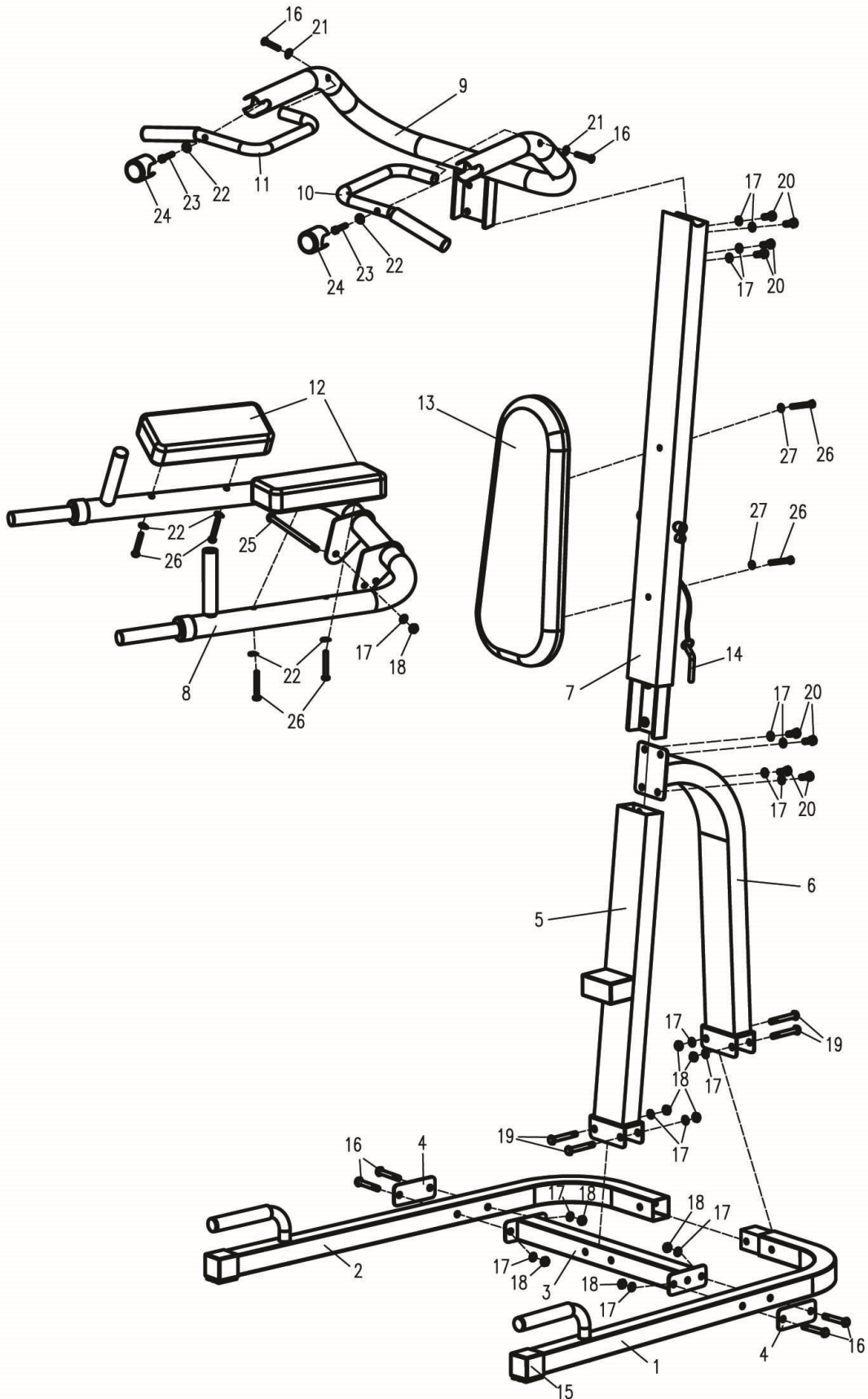
SOME STATES DO NOT ALLOW THE EXCLUSION OR LIMITATION OF INCIDENTAL OR CONSEQUENTIAL DAMAGES, SO THE ABOVE LIMITATION OR EXCLUSION MAY NOT APPLY TO YOU. THIS WARRANTY GIVES YOU SPECIFIC LEGAL RIGHTS AND YOU MAY HAVE OTHER RIGHTS THAT VARY FROM STATE TO STATE.

In the event of failure of this product to conform to this warranty during the warranty period, please call our service number for assistance in the repair or replacement of the product or any covered part. We will repair or replace, at its own option, the product or any covered part, except that this warranty does not cover damage caused by accident (including transit) , or repairs or attempted repairs by any person not authorized by our company, or by vandalism, misuse, abuse, or alteration. The Warranty Period is based on the purchase date of the product validated by the Authorized Retailers Register Receipt, or valid copy of transaction statement.

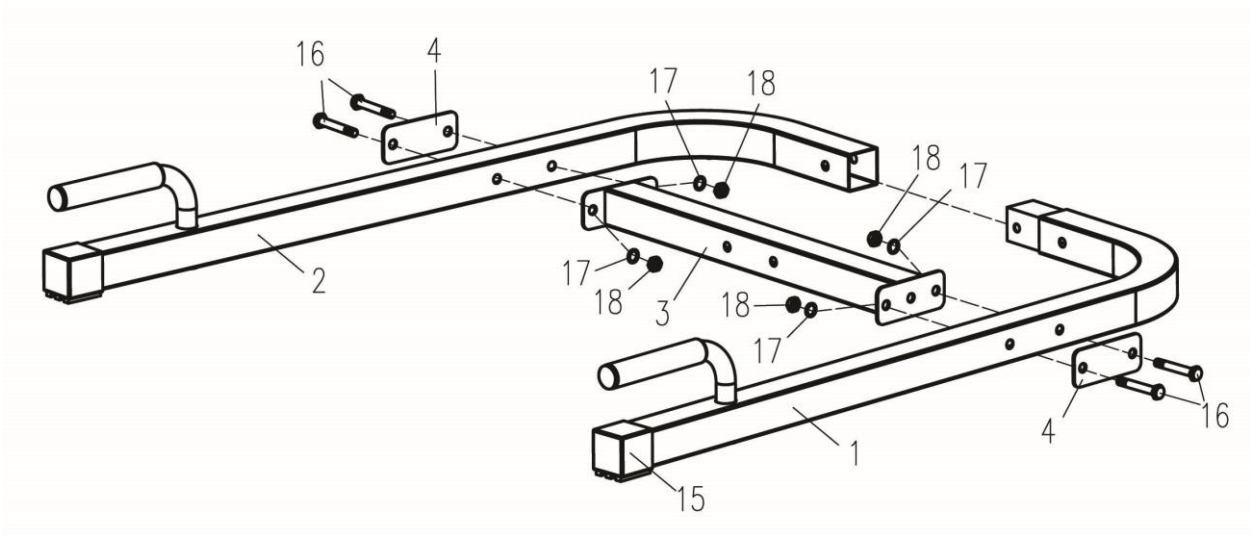
Parts Listing

PART NO.	DESCRIPTION	QTY
1	LEFT LOWER BASEFRAME	1
2	RIGHT LOWER BASEFRAME	1
3	LOWER CROSS BAR SUPPORT	1
4	METAL SUPPORT PLATE	2
5	LOWER SECTION MAINFRAME SUPPORT	1
6	REAR SUPPORT FRAME	1
7	UPPER SECTION MAINFRAME SUPPORT	1
8	VERTICAL KNEE RAISE/DIP ASSEMBLY	1
9	UPPER PULL-UP FRAME ASSEMBLY	1
10	LEFT HANDLEBAR	1
11	RIGHT HANDLEBAR	1
12	ARMREST PADS	2
13	BACKREST PAD	1
14	M4×16MM SELF-TAPPING SCREW	1
15	70MM×50MM END CAPS	2
16	M10×69MM BOLT	6
17	M10 WASHER	15
18	M10 LOCKNUT	9
19	M10×73MM BOLT	4
20	M10×25MM SCREW	8
21	M10 ARC WASHER	2
22	M8 ARC WASHER	6
23	M8×42 SCREW	2
24	ROUND INNER CAP	2
25	M10×173 BOLT	1
26	M8×62MM SCREW	6
27	M8 WASHER	2

Exploded View



Baseframe Assembly- Step 1

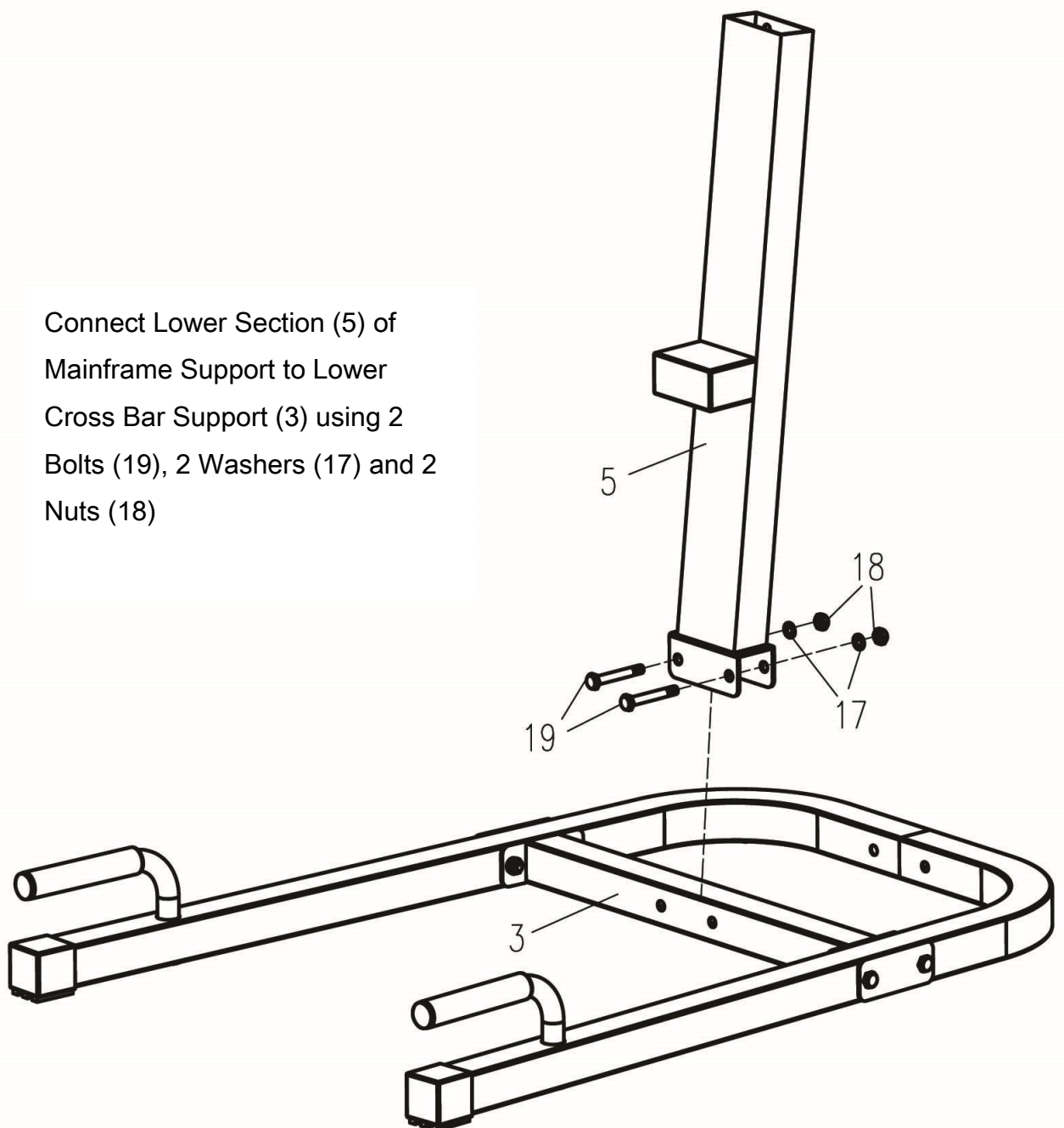


Connect Left Lower Baseframe (1) to Right Lower Baseframe (2) using Lower Cross Bar Support (3) and secure with 4 Bolts (16) , 2 Metal Support Plates(4), 4 Washers (17) and 4 Nuts (18). Place End Caps (15) on ends of Baseframe 1 & 2.

NOTE: Tighten All Bolts At This Time

Mainframe Assembly –Step 2

Connect Lower Section (5) of
Mainframe Support to Lower
Cross Bar Support (3) using 2
Bolts (19), 2 Washers (17) and 2
Nuts (18)

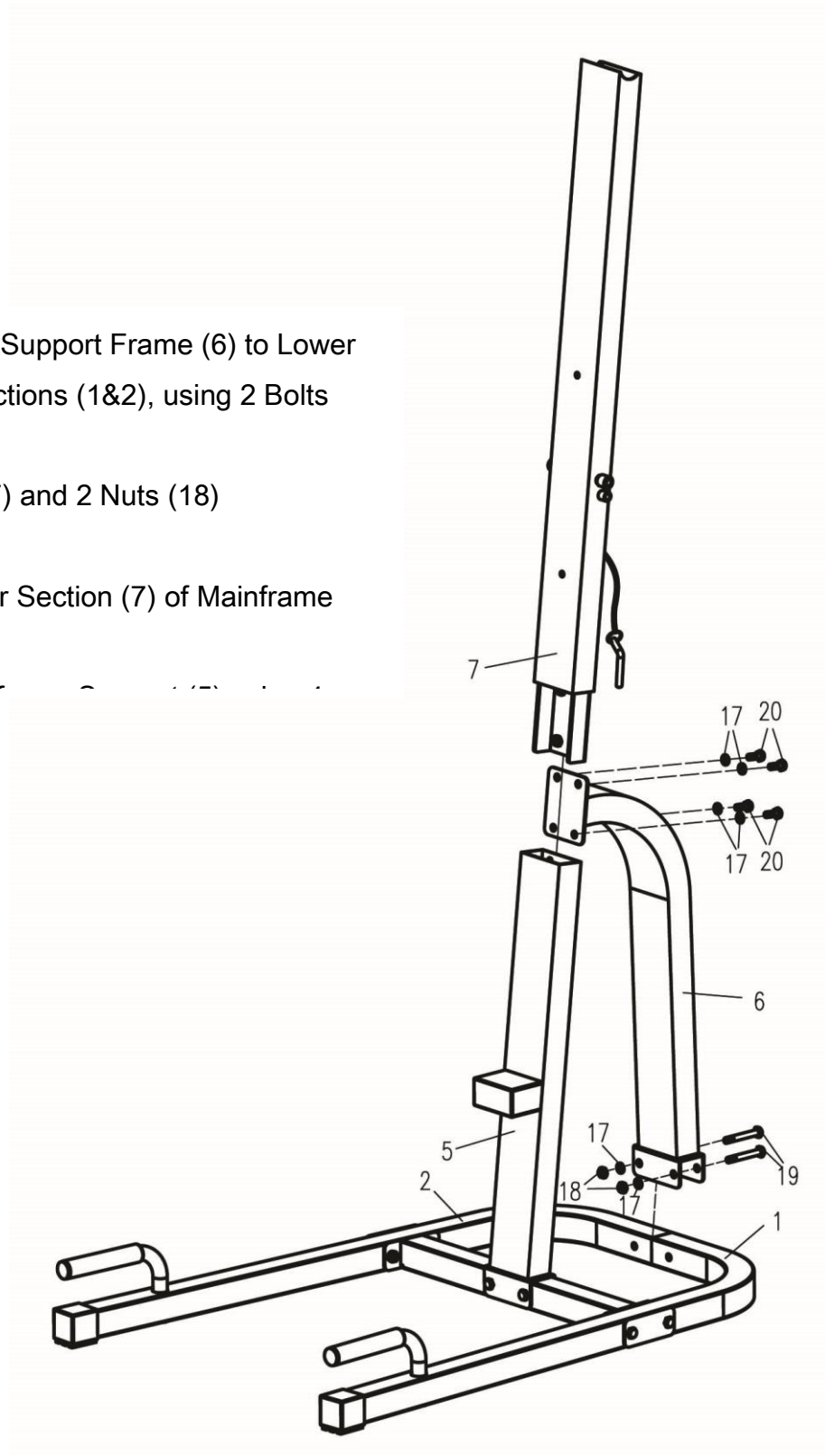


NOTE: Tighten All Bolts At This Time

Mainframe Assembly (cont) –Step 3

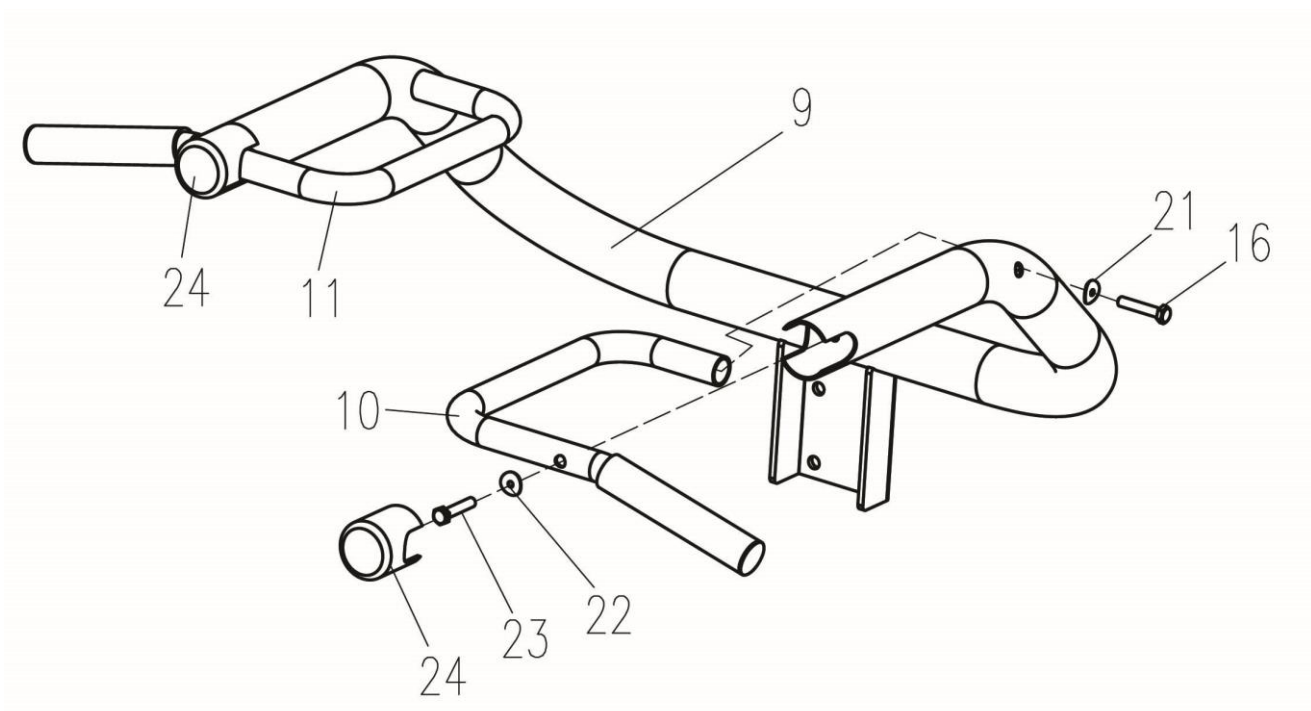
Connect Rear Support Frame (6) to Lower Baseframe sections (1&2), using 2 Bolts (19), 2 Washers (17) and 2 Nuts (18)

Connect Upper Section (7) of Mainframe Support



NOTE: Tighten All Bolts At This Time

Upper Pull Up Frame Assembly- Step 4

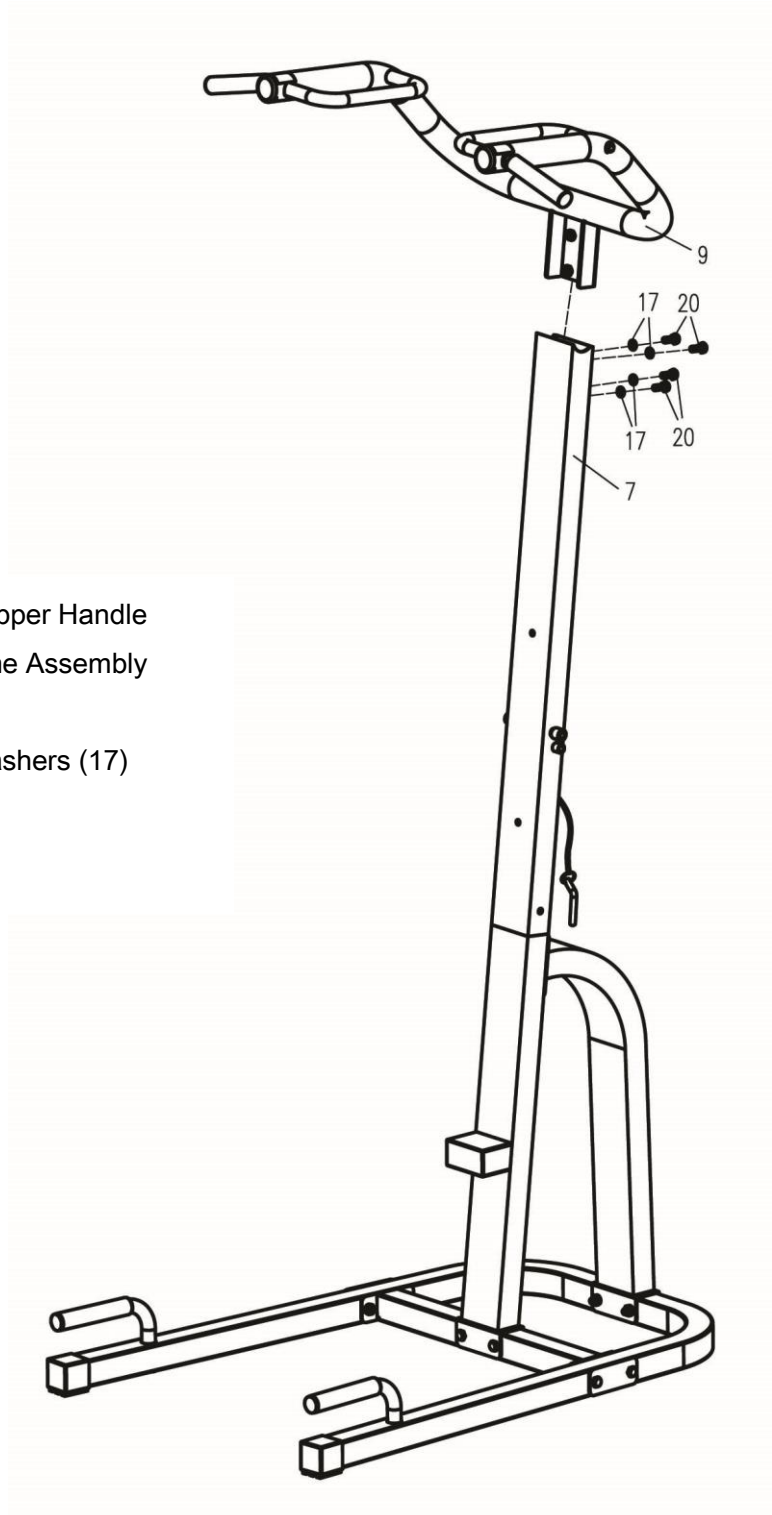


Connect Handlebars (10 &11) to Upper Pull Up Frame Assembly (9) using Bolts (16) and Washers (21).

Connect Handlebars to Upper Frame Assembly using Screws (23) and washers (22). Place Round Caps (24) over End of Handle Assembly.

NOTE: Tighten All Bolts At This Time

Upper Frame Assembly (Cont.)- Step 5

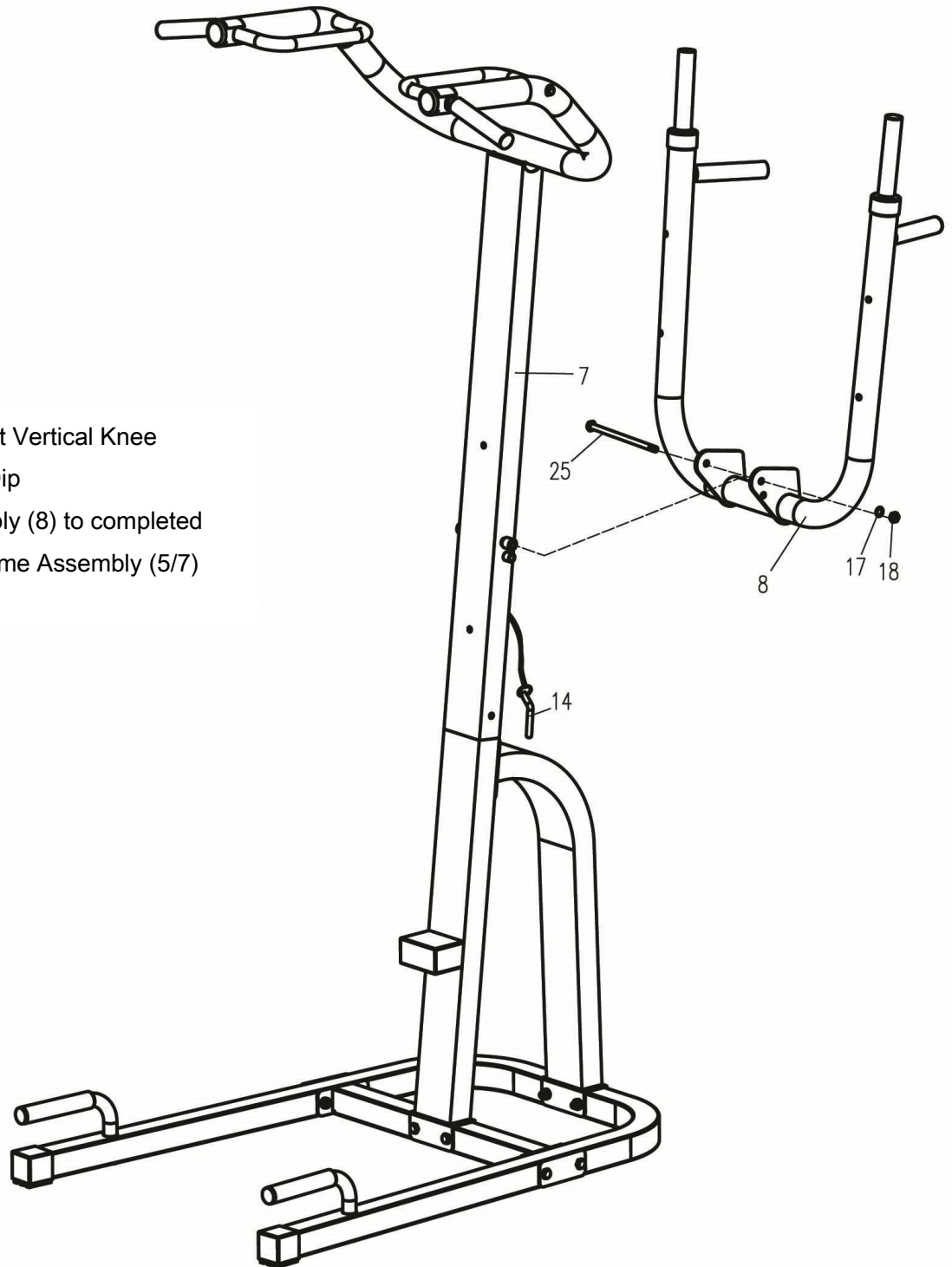


Connect completed Upper Handle
Assembly to Mainframe Assembly
using 4
Screws (20) and 4 Washers (17)

NOTE: Tighten All Bolts At This Time

Vertical Knee Raise / Dip Assembly - Step 6

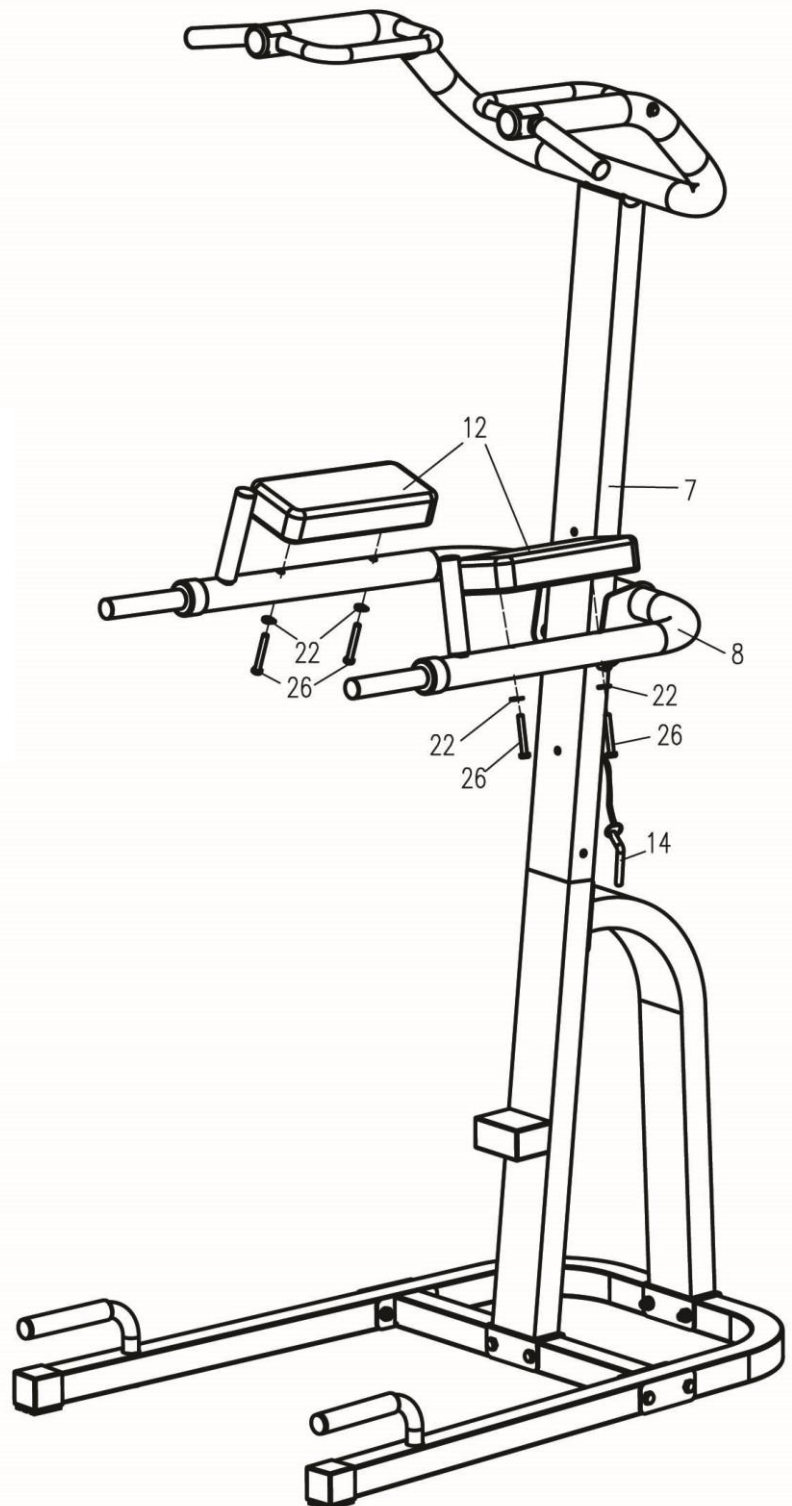
Connect Vertical Knee
Raise/Dip
Assembly (8) to completed
Mainframe Assembly (5/7)
using



NOTE: Tighten All Bolts At This Time

Arm Pad Assembly- Step 7

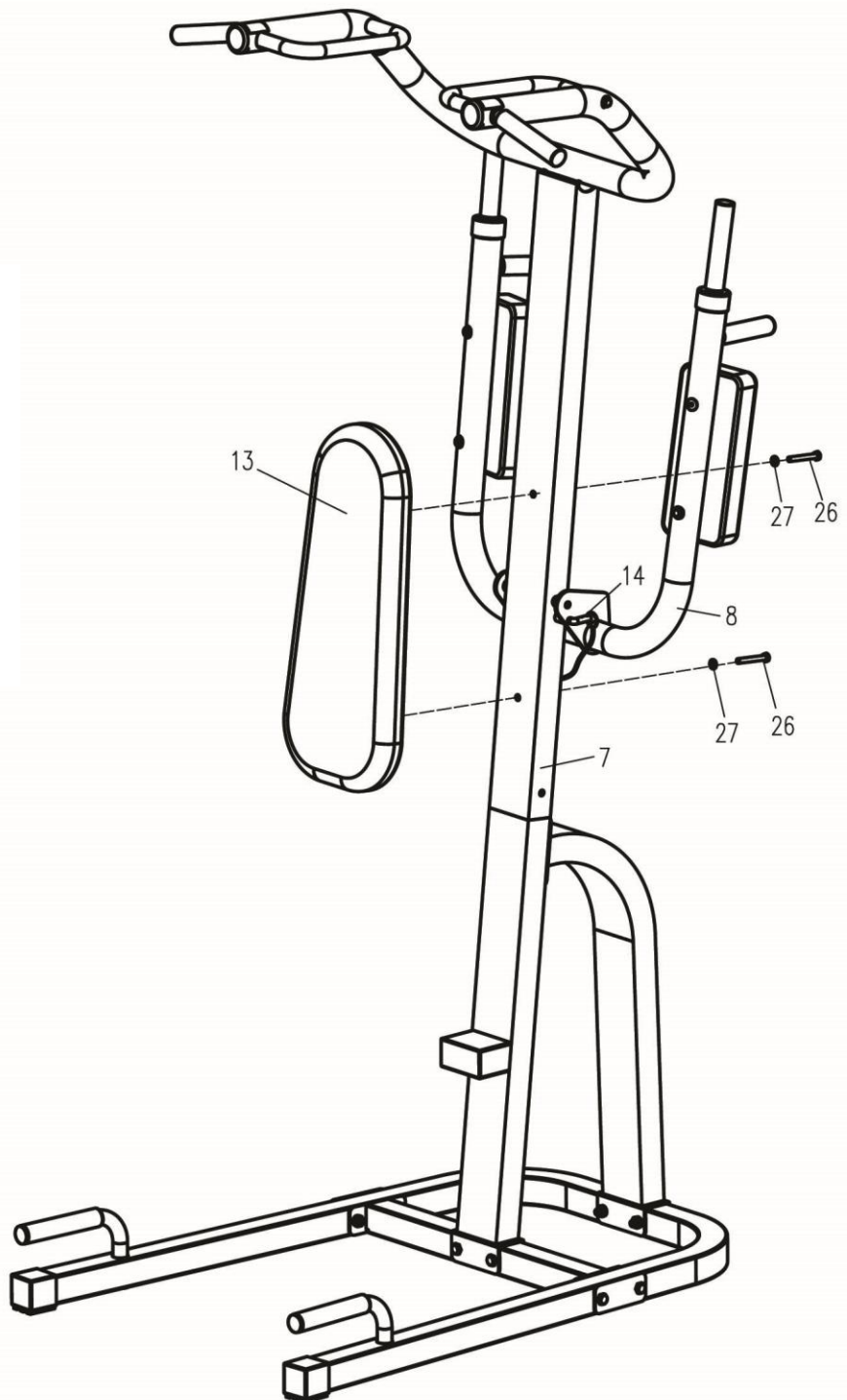
Connect Arm Rest Pads
(12)
to Vertical Knee
Raise/Dip
Assembly (8) using 4
Screws



NOTE: Tighten All Bolts At This Time

Upper Frame Assembly (Cont.)- Step 8

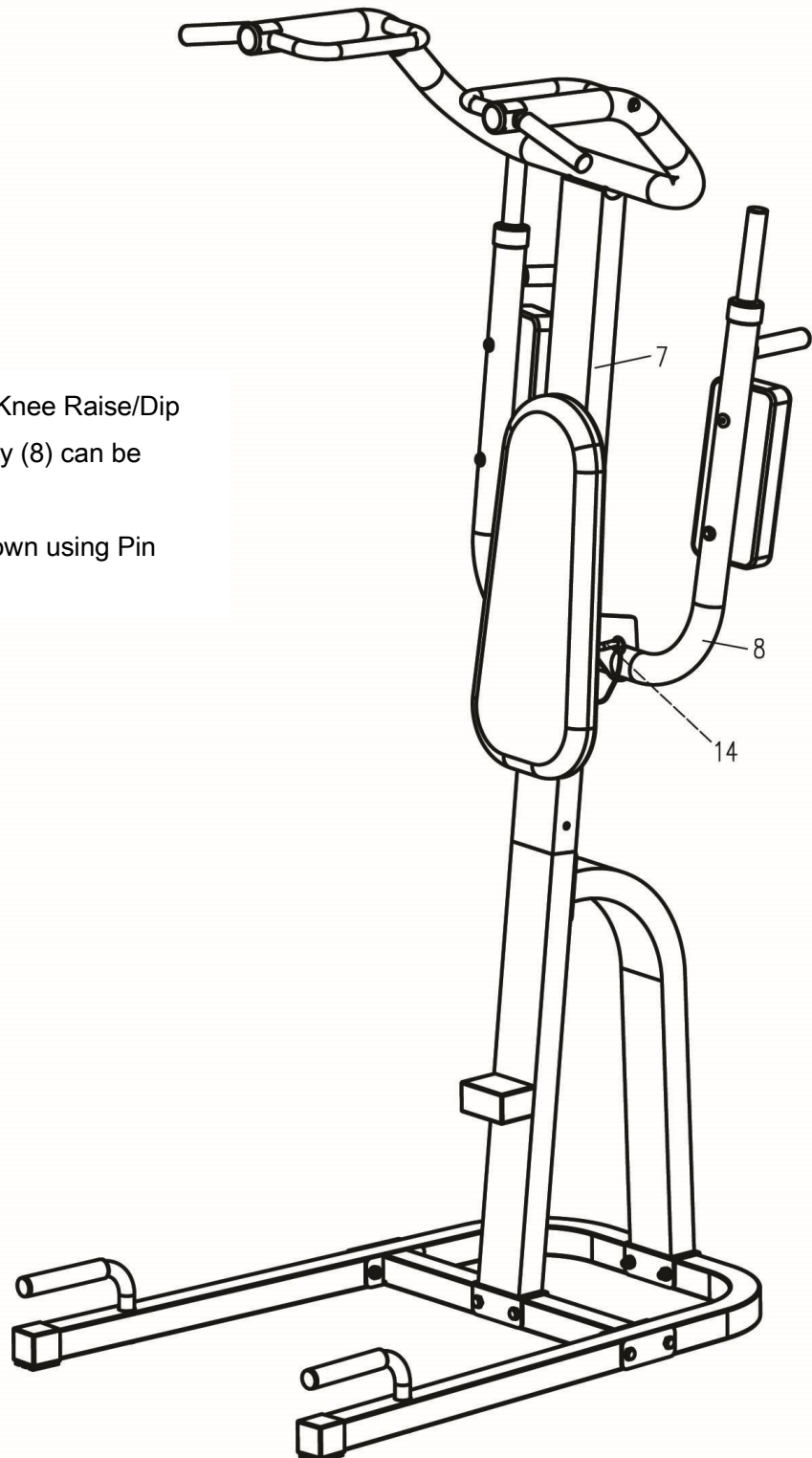
Install Backrest Pad (13)
to
Upper Mainframe (7)
using 2
Screws (26) and 2
Washers
(27).



NOTE: Tighten All Bolts At This Time

Vertical Knee Raise/Dip Assembly Adjustment Step 9

Vertical Knee Raise/Dip
Assembly (8) can be
adjusted
Up or Down using Pin
(14)



NOTE: Tighten All Bolts At This Time
Final Assembly



300 Lb. Weight
Capacity

CAUTION:
MAKE SURE ALL NUTS, BOLTS
& SCREWS ARE COMPLETELY
TIGHTENED BEFORE USE



SEVEN SPORT, s.r.o.

Borivojova 35/878 130 00 Praha 3, Czech Republic

IČO: 268 47 264, DIČ: CZ26847264

Orders: +420 556 300 970, objednavky@insportline.cz

Warranty Claims: +420 556 770 190, Mobile: +420 604 853 019, reklamace@insportline.cz

Service: +420 556 770 190, Mobile: +420 604 853 019, servis@insportline.cz

Fax: +420 556 770 192, (Service +420 556 770 191)

Web: www.insportline.cz, www.worker.cz, www.worker-moto.cz



INSPORTLINE, s.r.o.

Električná 6471, 911 01 Trenčín, Slovakia

IČO: 36311723, DIČ: SK2020177082

Orders: +421(0)326 526 701, +421(0)917 700 098, objednavky@insportline.sk

Warranty Claims: +421(0)326 526 701, +421(0)918 408 519, reklamacie@insportline.sk

Fax: +421(0)326 526 705

Web: www.insportline.sk, www.worker.sk, www.worker-moto.sk