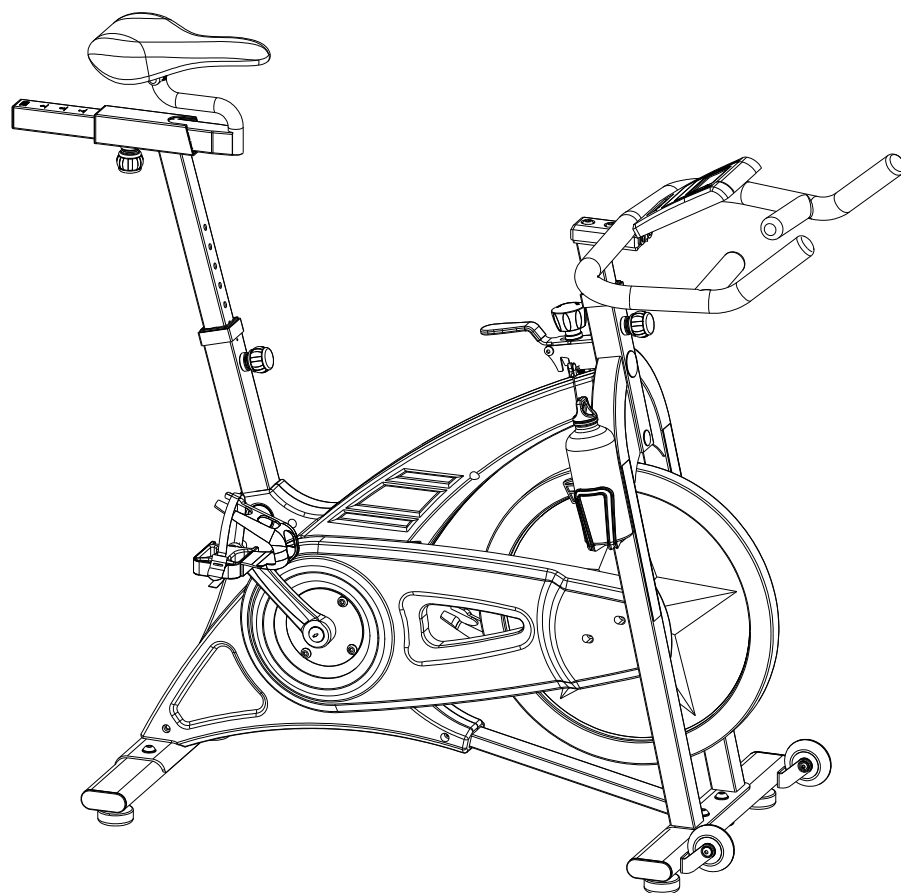




USER MANUAL – EN

IN 1823 Indoor exercise bike Signa



SAFETY GUIDELINE

- Once assemble fully, please inspect to make sure all hardware parts such as bolts, nuts and washers are positioned and in stability situation.
- Always inspect the safety chain guard that protects the moving parts of the bike to be in safe and in good order.
- Always inspect the seat post, seat slider, pedals and handlebar to make sure they are in safe and stability situation before using the bike.
- To lubricate all moving parts monthly is recommended.
- Do not wear loose clothing to avoid entangling into any moving parts.
- Do not remove feet from the pedals while they are in motion.
- Running or aerobic shoes are required when using the bike.
- Dry the bike after each use to remove sweat and moisture. Wipe your Hope bike regularly with a mild, non-abrasive cleaner and water solution. To avoid damaging the finish on the bike, never use a petroleum-based solvent when cleaning.
- Please keep children away from the bike while it is in use. Do not allow children to use the bike. This bike is designed for adults, not children.
- Do not dismount the bike until the pedals are at a completely STOP.
- If you have any pain or tightness in your chest, an irregular heartbeat, shortness of breath, feel faint or have any discomfort while you exercise, STOP!
- Do not place fingers or any other objects into moving parts of the exercise equipment.
- Before starting any exercise program, consult with your physician first. He or she can help establish the exercise frequency, time and intensity appropriate for your particular age and condition.
- After exercising, please turn the adjustment control knob clockwise (+) to increase tension so the pedals will not rotate freely and possibly hurt someone.
- The bike is limited 120KG, please use within the weight regulated, do not overload.
- Class - HC (according to EN ISO 20957) for home use.

UNIT GENERAL KNOWLEDGE

The unit belongs to Aerobic Exercise equipment. Its main objective is to increase oxygen inhaled and blood recycling, to make your heart (blood cycling system) and lung (breath system) be effective stimulus fully through exercise for a long time (stamina exercise) so that all body tissues and organs can be given a good supply of oxygen and nutrition to maintain optimal functional status and achieve the purpose of fitness finally.

The unit is designed according to the drive theory of bicycle; friction theory is adopted the resistance. Adjust the resistance by turning the Adjusting Knob, and brake by the Brake Handle. The equipment is safe and reliable during exercise. It is suitable for using at home, in office or other small places of leisure fitness.

Notice:

- Make sure the equipment is stably before starting exercise. It can be leveled to compensate for uneven surfaces through raising or lowering the four leveling bolts (16).
- Adjust Seat (22) to a suitable position by adjusting Seat Sliders (3) and Seat Post (2). And please adjust height of Handlebar (4) according to your body size.
- Set right resistance by Tension Knob (11), please set a right resistance according to your body condition. You may do exercise three times every week, about one hour every time. The best working effect is HBF as 110-150 times/min.
- The drive mode of the equipment is bi-directive drive. Please press Brake Handle (9) for braking when aggressive exercise is performed, it will stop immediately.
- Do not leave Seat (22) until all parts come to a stop completely.

PARTS LIST

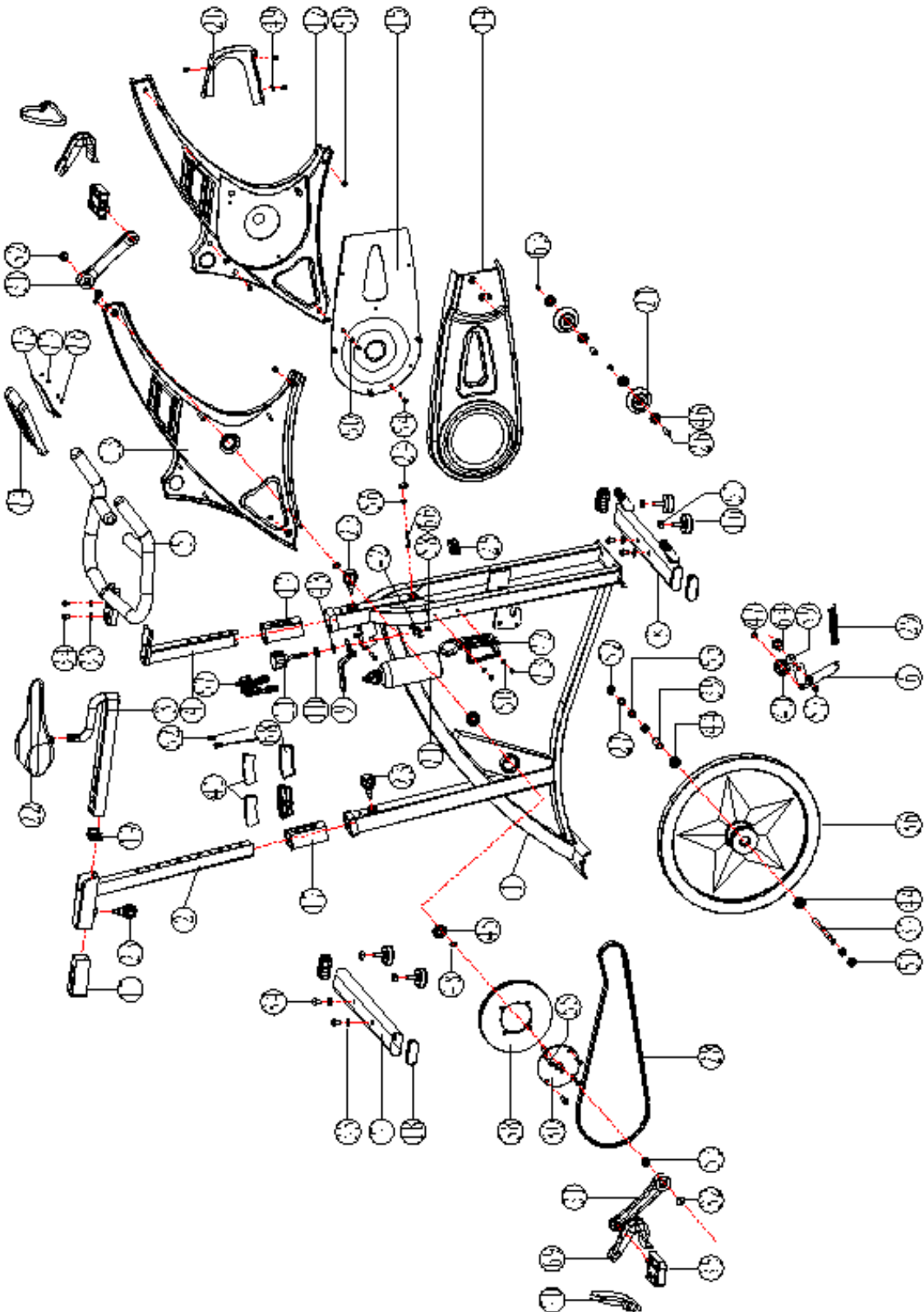
Part No.	Series No.	DESCRIPTION	SPECIFICATION	QTY
1	HP-SP0708PK-01-00A	Main Frame		1
2	0708-03-06A	Seat Post	□38*460*t1.5	1
3	HP-SP0708-03-03A	Seat Slider	□38*270*t1.5	1
4	0708-05-10A	Handlebar Post	□38*270*1.5T	1
5	HP-SP0709-05-00A	Handlebar	Ø28*998*t1.5	1
6	HP-SP0708PK-06-09A	Tension Bracket		1
7	HP-SP0708-04-04A	Rear Base	Flat Oval 30*70*1.5T*498L	1
8	HP-SP0708-04-00A	Front Base	Flat Oval 30*70*1.5T*498L	1
9	SP0708PKS-09-00A	Brake-handle		1
10	HP-SP0708-02-03A	Washer	Ø10xØ25xT5	1
11	HP-SP0708PKS-10-01A	Tension Knob	M10*P1.25*60	1
12	HP-SP0708-07-01A	Cover (right)		1
13	HP-SP0708-07-02A	Cover (left)		1
14	HP-SP-0708PK-07-03A	Chain Cover A		1
15	HP-SP-0708PK-07-04A	Chain Cover B		1
16		Adjustable latch	M10	4
17	HP-SP0708-07-07A	Plastic Sheath-inner Pipe	Suitable for 45*45*1.5 Square Tube & 38x38 Square Tube	3
18	HP-SP0708-07-08A	Cap of Bases	30*70*1.5 Elliptical Tube	4
19		Cap of Seat Slider	Suitable for 38*38*1.5T Square Tube	1
20	HP-SP0708PKS-10-09A	PS Front Cover	For Belt Transmission System	1
21		Transport Wheel	D8*D71.5*W223	2

22		Seat		1
23	HP-SP0708-07-10A	Pop Pin	M16*P1.5*35L	3
24	HP-SP0708-07-11A	Φ21 Mat		1
25		Cap of Inner Pipe	45*45*1.5T Square Tube	1
26		Hexagonal hollow bolt	Φ8*M6*30	3
27		Flat washer	Φ12*Φ25*1.5T	1
28		Belt	5PK54"	1
29	HP-SP0708PKS-11-01A	Tension Spring	Ø2.5*17 Ring	1
30	HP-SP0708PK- 06-06A	Spline Shaft		1
31		Right & Left Crank	170 9/16"-20UNF	1set
32		Crank Cover		2
33		Flat Washer	Φ20*Φ10*1.5	6
34		Inner Hexagon Flat Round Head Screw	M10x25	6
35		Right & Left Pedal	9/16"-20UNF-RH	1
36		Flywheel		1
37	HP-SP0708PK-06-02A	Flywheel Spindle	M12*P1.0*166	1
38	HP-SP0708PKS-11-06A	Belt Wheel	Ø205*19.8W	1
39	HP-SP0708PK- 06-04A	Sleeve	Ø18*Ø12*36L	1
40	HP-SP0810-2PJ-03-07A	Pulley, Flywheel (front drive)	φ37*φ30*24.5	1
41	HP-SP-0708-06-13A	Clamp Brake Assembly	Brake Pad and Brake String	1
42	HP-SP0708PKS-11-08A	Clamp Brake Holder	T4.0*M10*P1.25	1
43	HP-SP0708-02-04A	Flat Washer	Ø10.2-Ø25*T1.5	1
44		6001	6001 (黑色塑胶壳) ABEC-5	2
45		6004	6004 (黑色塑胶壳) ABEC-5	2

46		608	608	4
47		C-shape Axes Snap Spring	Φ10	1
48		C-shape Axes Snap Spring	Φ20	2
49		Nut	Φ4.8*T0.8	1
50		Tapping tcrew	ST4.8*15	17
51		Hexagon Flange Nut	M12x1.0	1
52		Cap Nut M12	M12*p1.0	1
53		Hexagon Flange Nut	M10*P1.25	2
54		Phillips-head screws	M5*12L	2
55		Hexagon Thin Nut M12	M12*1.0	3
56		Hexagon Flange Nut	M6	1
57		Nylon Nut	M10	1
58		Nylon Nut	M10*P1.25	1
59		Plochá podložka GB/T97.2 10	Φ10*1.5	6
60		Flat Washer GBT97.2 5	Φ5.2*1.0	4
61		Hexagon Nut	M10	4
62		Brake cable		2
63		Inner Hexagon Flat Round Bolt M6x12	M6x12	3
64		Inner Hexagon Flat Round Bolt M10x25	M10x25	1
65		Inner Hexagon Flat Round Bolt M10x16	M10x16	4

66		Inner Hexagon Flat Round Bolt M6x40	M6x40	1
67		Mounting the brake clamp		1
68		Brake pad		2
69		Pedal case		2
70		Pedal buckle		2
71		Water bottle		1
72		Holder water bottles		1
73		Phillips head screws	M5x12L	2
74		Control panel	3T	1
75		Phillips head screws	M6x10L	2
76		Phillips head screws	M5x8L	2

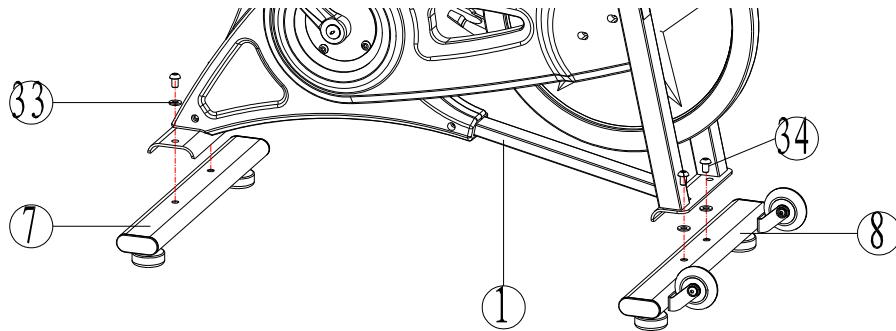
EXPLODED DRAWING



STEPS OF INSTALLATION:

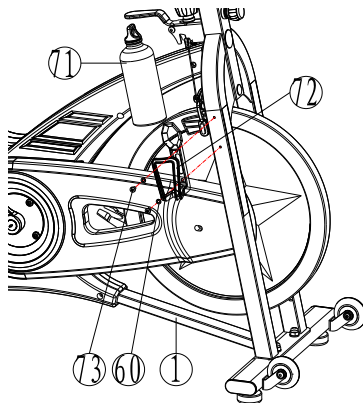
STEP 1: ASSEMBLE FRONT BASE AND REAR BASE

According to the following figure, fix the Front Base (8) and Rear Base (7) to the Main Frame (1) respectively with 4pcs of **Hexagonal hollow bolt M10*25L(34)** , Flat Washer $\phi 20*\phi 10*1.5T$ (33) by Opening Wrench #17 for fastening.



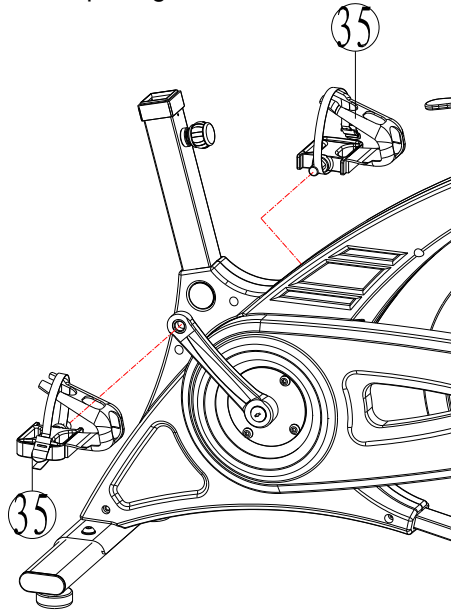
STEP 2: ASSEMBLE WATER BOTTLE HOLDER AND WATER BOTTLE.

Please refer to the following figure, fix the Water Bottle Holder (72) to Main Frame (1) via using some tools, and put the Water Bottle (71) into the Water Bottle Holder (72).



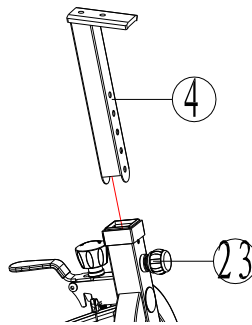
STEP 3: INSTALL LEFT PEDAL AND RIGHT ONE.

Refer to the figure as below, insert the Left Pedal and Right One (35) into the Crank (31). Furthermore, fix them to the Main Frame (1) with Opening Wrench #15.



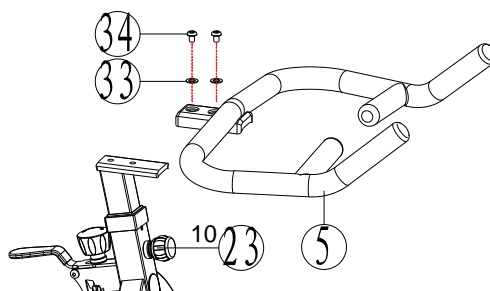
STEP 4: ASSEMBLE THE HANDLEBAR POST.

According the following figure, slacken the Pop Pin (23), and slide the Handlebar Post (4) into the Handlebar Post Housing on the Main Frame (1), and re-tighten the Pop Pin (23).



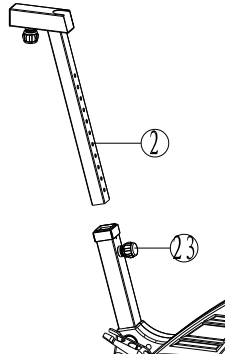
STEP 5: ASSEMBLE THE HANDLEBAR.

Fix the Handlebar (5) to the Handlebar Post and tighten it with Flat Washer $\Phi 10$ (33) and Hexagon Flat Round Head Screw M10*25L (34).



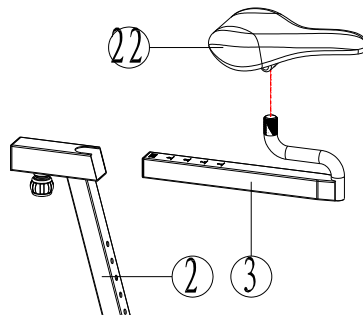
STEP 6: ASSEMBLE THE SEAT POST

Slacken the Pop Pin (23), and slide the Seat Post (2) to the Seat Post Housing on the Main Frame, then retighten the Pop Pin (23).



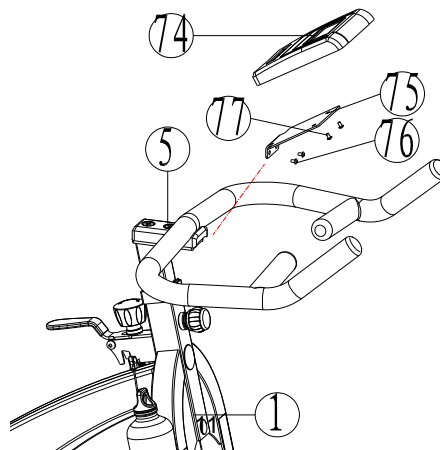
STEP 7: ASSEMBLE THE SEAT.

Slacken the Pop Pin (23) and slide the Seat Slider (3) into the Seat Post (2), then re-tighten the Pop Pin (23) and fix the Seat (22) to the Seat Slider (3).



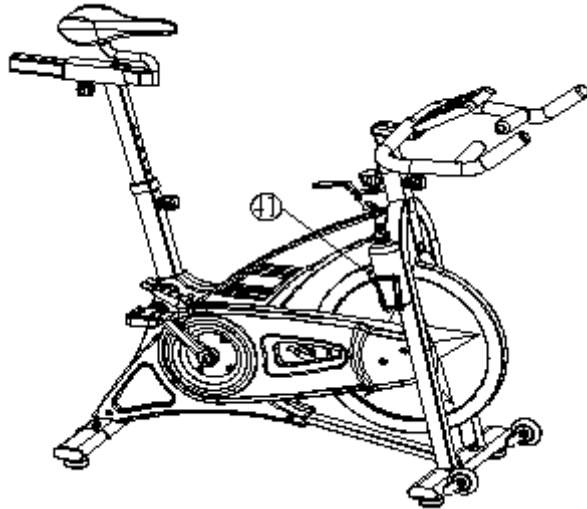
STEP 8: FIX METER BOARD AND METER.

According to the figure as below, firstly, install the control panel (75) to the Handlebar (5) with Phillips screw (76), and then, fix meter (74) onto control panel (75) with Phillips screw (77) by Opening Wrench. Connect the Speed string to Meter finally.



STEP 9: INSTALLATION COMPLETED.

After finishing installation, please inspect all the screws and nuts carefully to make sure all of them tightened.



TERMS AND CONDITIONS OF WARRANTY, WARRANTY CLAIMS

General Conditions of Warranty and Definition of Terms

All Warranty Conditions stated hereunder determine Warranty Coverage and Warranty Claim Procedure. Conditions of Warranty and Warranty Claims are governed by Act No. 40/1964 Coll. Civil Code, Act No. 513/1991 Coll., Commercial Code, and Act No. 634/1992 Coll., Consumer Protection Act, as amended, also in cases that are not specified by these Warranty rules.

The seller is SEVEN SPORT s.r.o. with its registered office in Borivojova Street 35/878, Prague 13000, Company Registration Number: 26847264, registered in the Trade Register at Regional Court in Prague, Section C, Insert No. 116888.

According to valid legal regulations it depends whether the Buyer is the End Customer or not.

“The Buyer who is the End Customer” or simply the “End Customer” is the legal entity that does not conclude and execute the Contract in order to run or promote his own trade or business activities.

“The Buyer who is not the End Customer” is a Businessman that buys Goods or uses services for the purpose of using the Goods or services for his own business activities. The Buyer conforms to the General Purchase Agreement and business conditions to the extent specified in the Commercial Code.

These Conditions of Warranty and Warranty Claims are an integral part of every Purchase Agreement made between the Seller and the Buyer. All Warranty Conditions are valid and binding, unless otherwise specified in the Purchase Agreement, in the Amendment to this Contract or in another written agreement.

Warranty Conditions

Warranty Period

The Seller provides the Buyer a 24 months Warranty for Goods Quality, unless otherwise specified in the Certificate of Warranty, Invoice, Bill of Delivery or other documents related to the Goods. The legal warranty period provided to the Consumer is not affected.

By the Warranty for Goods Quality, the Seller guarantees that the delivered Goods shall be, for a certain period of time, suitable for regular or contracted use, and that the Goods shall maintain its regular or contracted features.

The Warranty does not cover defects resulting from (if applicable):

- User's fault, i.e. product damage caused by unqualified repair work, improper assembly, insufficient insertion of seat post into frame, insufficient tightening of pedals and cranks
- Improper maintenance
- Mechanical damages
- Regular use (e.g. wearing out of rubber and plastic parts, moving mechanisms, joints etc.)
- Unavoidable event, natural disaster
- Adjustments made by unqualified person
- Improper maintenance, improper placement, damages caused by low or high temperature, water, inappropriate pressure, shocks, intentional changes in design or construction etc.

Warranty Claim Procedure

The Buyer is obliged to check the Goods delivered by the Seller immediately after taking the responsibility for the Goods and its damages, i.e. immediately after its delivery. The Buyer must check the Goods so that he discovers all the defects that can be discovered by such check.

When making a Warranty Claim the Buyer is obliged, on request of the Seller, to prove the purchase and validity of the claim by the Invoice or Bill of Delivery that includes the product's serial number, or eventually by the documents without the serial number. If the Buyer does not prove the validity of the Warranty Claim by these documents, the Seller has the right to reject the Warranty Claim.

If the Buyer gives notice of a defect that is not covered by the Warranty (e.g. in the case that the Warranty Conditions were not fulfilled or in the case of reporting the defect by mistake etc.), the Seller is eligible to require a compensation for all the costs arising from the repair. The cost shall be calculated according to the valid price list of services and transport costs.

If the Seller finds out (by testing) that the product is not damaged, the Warranty Claim is not accepted. The Seller reserves the right to claim a compensation for costs arising from the false Warranty Claim.

In case the Buyer makes a claim about the Goods that is legally covered by the Warranty provided by the Seller, the Seller shall fix the reported defects by means of repair or by the exchange of the damaged part or product for a new one. Based on the agreement of the Buyer, the Seller has the right to exchange the defected Goods for a fully compatible Goods of the same or better technical characteristics. The Seller is entitled to choose the form of the Warranty Claim Procedures described in this paragraph.

The Seller shall settle the Warranty Claim within 30 days after the delivery of the defective Goods,

unless a longer period has been agreed upon. The day when the repaired or exchanged Goods is handed over to the Buyer is considered to be the day of the Warranty Claim settlement. When the Seller is not able to settle the Warranty Claim within the agreed period due to the specific nature of the Goods defect, he and the Buyer shall make an agreement about an alternative solution. In case such agreement is not made, the Seller is obliged to provide the Buyer with a financial compensation in the form of a refund.



SEVEN SPORT s.r.o.

Registered Office: Borivojova 35/878, 130 00 Praha 3, Czech Republic
Headquarters: Delnicka 957, 749 01 Vitkov, Czech Republic
Warranty & Service Centre: Cermenska 486, 749 01 Vitkov, Czech Republic
CRN: 26847264
VAT ID: CZ26847264
Phone: +420 556 300 970
E-mail: eshop@insportline.cz
reklamace@insportline.cz
servis@insportline.cz
Web: www.insportline.cz

SK

INSPORTLIN s.r.o.

Headquarters, Warranty & Service centre: Elektricka 6471, 911 01 Trencin, Slovakia
CRN: 36311723
VAT ID: SK2020177082
Phone: +421(0)326 526 701
E-mail: objednavky@insportline.sk
reklamacie@insportline.sk
servis@insportline.sk
Web: www.insportline.sk

Date of Sale: Stamp and Signature of Seller: