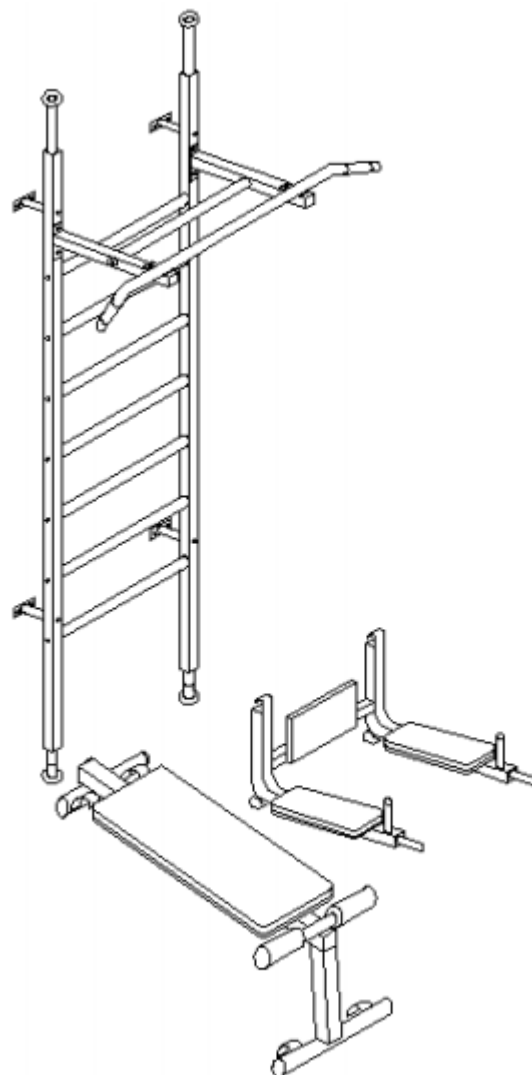




USER MANUAL – EN
IN BE004 Wall Bars Benchmark Energy



CONTENTS

INTRODUCTION..... 3
TECHNICAL DESCRIPTION..... 3
PARTS LIST 3
DIAGRAM..... 4
ASSEMBLY 4
SAFETY INSTRUCTIONS..... 5
TERMS AND CONDITIONS OF WARRANTY, WARRANTY CLAIMS..... 5

INTRODUCTION

This wall bars are suitable for effective exercise of whole body from the comfort of your home. Exercising on wall bars leads to better physical condition, coordination and increase the strength of muscles.

WARNING: Thanks to constant innovation of products, there can be a small diversion in design of the product – without the decrease of quality – your product can differ from illustrate picture.

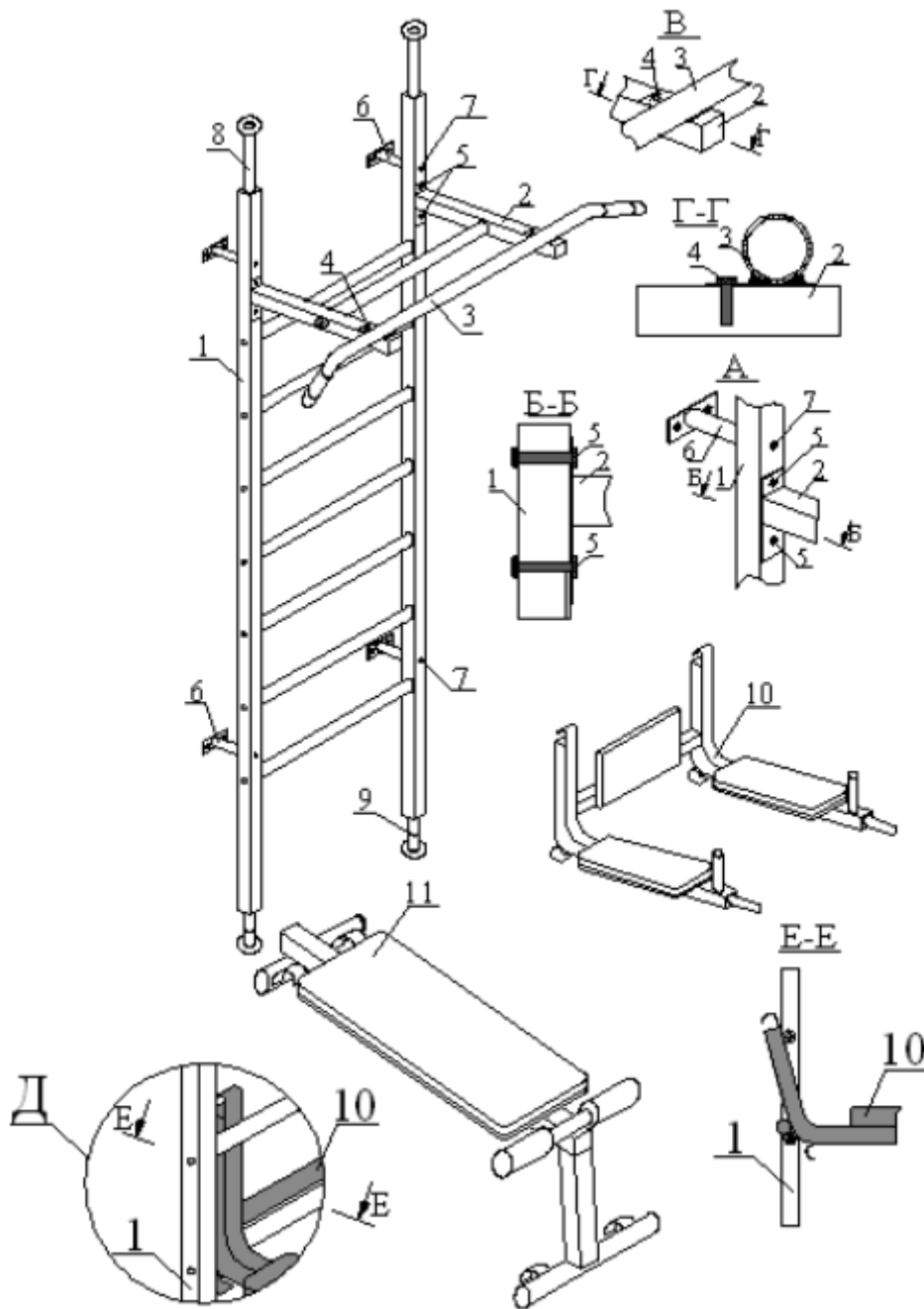
TECHNICAL DESCRIPTION

Maximum weight limit:	120 kg
Width:	66 cm
Mounting type:	to the ceiling, to the wall
Height of upper bar (lowest position):	217 cm
Installation area:	0.5 m ²
Ceiling height for installation:	2,45 - 2,85 m
Packaging weight (maximum):	50 kg

PARTS LIST

NO.	Name	QTY.
1	Two metal sides with metal rails with plastic cover	1
2	Support bar	2
3	Pull-up bar	1
4	M8 Mounting Screw	2
5	Screw M10 + nut	4
6	Mounting bracket for wall mounting	4
7	Screw M10	4
8	Top span	2
9	Bottom Span - threaded	2
10	Removable parallel bars (can be used as a holder for a weightlifting bar)	1
11	Bench	1

DIAGRAM



ASSEMBLY

Mounting to the ceiling:

1. Attach the bracket (3) to the bar (3) using the bolts (4).
2. Attach the brackets (2) to the rail (3) to the bolts (1) with the bolts (5).
3. Insert the top and bottom span (8) and (9) into the side walls (1). Fix the top span (8) so that there is a little bit of space between top span (8) and ceiling after standing up of the ladder. You will complete the free space and stabilize the side walls by screwing bottom spans (9). (Note: After raising the wall bars it is not recommended to screw the bottom bracket thread into the rails tightly. To regulate and fix the lower spacers use jam nuts.)

4. Raise the rails to the vertical position.
5. Stabilize the bottom span (9) by jam nuts.
6. Fasten the parallel bars (10) and the bench (11) to the bead.

Mounting to the wall:

1. Attach to the pull-up bar (3) support bar (2) using the bolts (4).
2. Attach the support bar (2) with pull-up bar (3) to the wall bars (1) using the screws (5).
3. Wall bars (1) are fastened to the wall using fasteners (6) with screws (7).
4. First fasten the fasteners (6) to the beams (1) with screws (7) and then lift the rails and attach the handles (6) to the wall.
5. Attach the bar (10) and bench (11) to the bead.

SAFETY INSTRUCTIONS

- No more than 1 person can use the wall bars at the same time.
- Before each exercise, check the bars and fasteners.

TERMS AND CONDITIONS OF WARRANTY, WARRANTY CLAIMS

General Conditions of Warranty and Definition of Terms

All Warranty Conditions stated hereunder determine Warranty Coverage and Warranty Claim Procedure. Conditions of Warranty and Warranty Claims are governed by Act No. 40/1964 Coll. Civil Code, Act No. 513/1991 Coll., Commercial Code, and Act No. 634/1992 Coll., Consumer Protection Act, as amended, also in cases that are not specified by these Warranty rules.

The seller is SEVEN SPORT s.r.o. with its registered office in Borivojova Street 35/878, Prague 13000, Company Registration Number: 26847264, registered in the Trade Register at Regional Court in Prague, Section C, Insert No. 116888.

According to valid legal regulations it depends whether the Buyer is the End Customer or not.

“The Buyer who is the End Customer” or simply the “End Customer” is the legal entity that does not conclude and execute the Contract in order to run or promote his own trade or business activities.

“The Buyer who is not the End Customer” is a Businessman that buys Goods or uses services for the purpose of using the Goods or services for his own business activities. The Buyer conforms to the General Purchase Agreement and business conditions to the extent specified in the Commercial Code.

These Conditions of Warranty and Warranty Claims are an integral part of every Purchase Agreement made between the Seller and the Buyer. All Warranty Conditions are valid and binding, unless otherwise specified in the Purchase Agreement, in the Amendment to this Contract or in another written agreement.

Warranty Conditions

Warranty Period

The Seller provides the Buyer a 24 months Warranty for Goods Quality, unless otherwise specified in the Certificate of Warranty, Invoice, Bill of Delivery or other documents related to the Goods. The legal warranty period provided to the Consumer is not affected.

By the Warranty for Goods Quality, the Seller guarantees that the delivered Goods shall be, for a certain period of time, suitable for regular or contracted use, and that the Goods shall maintain its regular or contracted features.

The Warranty does not cover defects resulting from (if applicable):

- User’s fault, i.e. product damage caused by unqualified repair work, improper assembly, insufficient insertion of seat post into frame, insufficient tightening of pedals and cranks

- Improper maintenance
- Mechanical damages
- Regular use (e.g. wearing out of rubber and plastic parts, moving mechanisms, joints etc.)
- Unavoidable event, natural disaster
- Adjustments made by unqualified person
- Improper maintenance, improper placement, damages caused by low or high temperature, water, inappropriate pressure, shocks, intentional changes in design or construction etc.

Warranty Claim Procedure

The Buyer is obliged to check the Goods delivered by the Seller immediately after taking the responsibility for the Goods and its damages, i.e. immediately after its delivery. The Buyer must check the Goods so that he discovers all the defects that can be discovered by such check.

When making a Warranty Claim the Buyer is obliged, on request of the Seller, to prove the purchase and validity of the claim by the Invoice or Bill of Delivery that includes the product's serial number, or eventually by the documents without the serial number. If the Buyer does not prove the validity of the Warranty Claim by these documents, the Seller has the right to reject the Warranty Claim.

If the Buyer gives notice of a defect that is not covered by the Warranty (e.g. in the case that the Warranty Conditions were not fulfilled or in the case of reporting the defect by mistake etc.), the Seller is eligible to require a compensation for all the costs arising from the repair. The cost shall be calculated according to the valid price list of services and transport costs.

If the Seller finds out (by testing) that the product is not damaged, the Warranty Claim is not accepted. The Seller reserves the right to claim a compensation for costs arising from the false Warranty Claim.

In case the Buyer makes a claim about the Goods that is legally covered by the Warranty provided by the Seller, the Seller shall fix the reported defects by means of repair or by the exchange of the damaged part or product for a new one. Based on the agreement of the Buyer, the Seller has the right to exchange the defected Goods for a fully compatible Goods of the same or better technical characteristics. The Seller is entitled to choose the form of the Warranty Claim Procedures described in this paragraph.

The Seller shall settle the Warranty Claim within 30 days after the delivery of the defective Goods, unless a longer period has been agreed upon. The day when the repaired or exchanged Goods is handed over to the Buyer is considered to be the day of the Warranty Claim settlement. When the Seller is not able to settle the Warranty Claim within the agreed period due to the specific nature of the Goods defect, he and the Buyer shall make an agreement about an alternative solution. In case such agreement is not made, the Seller is obliged to provide the Buyer with a financial compensation in the form of a refund.



SEVEN SPORT s.r.o.

Registered Office:	Borivojova 35/878, 130 00 Praha 3, Czech Republic
Headquarters:	Delnicka 957, 749 01 Vitkov, Czech Republic
Warranty & Service Centre:	Cermenska 486, 749 01 Vitkov, Czech Republic
CRN:	26847264
VAT ID:	CZ26847264
Phone:	+420 556 300 970
E-mail:	eshop@insportline.cz reklamace@insportline.cz servis@insportline.cz
Web:	www.insportline.cz

INSPORTLINE s.r.o.

Headquarters, Warranty & Service centre: Elektrická 6471, 911 01 Trenčín, Slovakia

CRN: 36311723

VAT ID: SK2020177082

Phone: +421(0)326 526 701

E-mail: objednavky@insportline.sk

reklamacie@insportline.sk

servis@insportline.sk

Web: www.insportline.sk

Date of Sale:

Stamp and Signature of Seller: