



USER MANUAL – EN

IN 902 Wireless Cycle Computer inSPORTline CY-200W



CONTENTS

INTRODUCTION.....	3
MAIN ITEM LIST	4
DISPLAY.....	5
HOW TO SETUP CYCLE COMPUTER	6
WHEEL CIRCUMFERENCE.....	6
INSTALLING THE BRACKET.....	6
INSTALLING THE SPEED SENSOR	6
INSTALLING THE MAGNET	6
CY-200W FEATURE LIST.....	7
MODE CHANGE.....	7
OPERATION PROCESS.....	8
USER SET	8
FUNCTIONAL SET	8
MEASURE MODE	9
MAINTENANCE	11
TROUBLESHOOTING	12
SPECIFICATIONS.....	12
WHEEL SIZE CHART	13
ENVIRONMENT PROTECTION	13
TERMS AND CONDITIONS OF WARRANTY, WARRANTY CLAIMS.....	13

ITRODUCTION

Congratulation!

You have decided for a cycle computer to help you achieve your health & wellness .It gives you the true image of your exercise work in precise way.

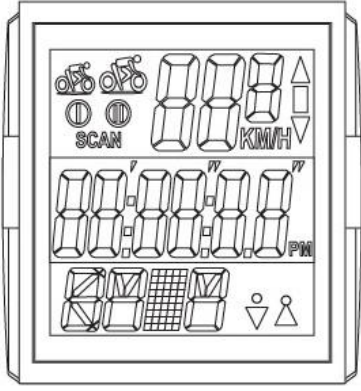
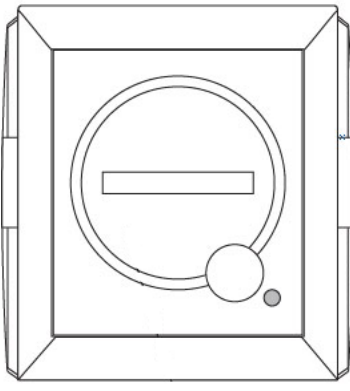


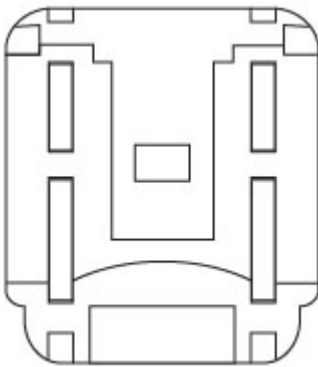
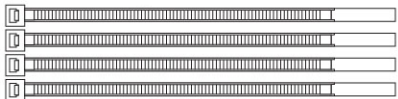
CY-200W is designed to give feedback required by the most discerning cyclists, in which is with all the functionality on one large easy to read display. **CY-200W** is a premier cycle computer for your challenge ride. With the wireless technology, users can enjoy their cycling.

Before using **CY-200W**, please read through the manual that guides you on how to operate it correctly & quickly. **CY-200W** offers you very useful features to customize your exercise and gain the best & accurate measurement. After exercise, you may view your fitness result by pressing the button.

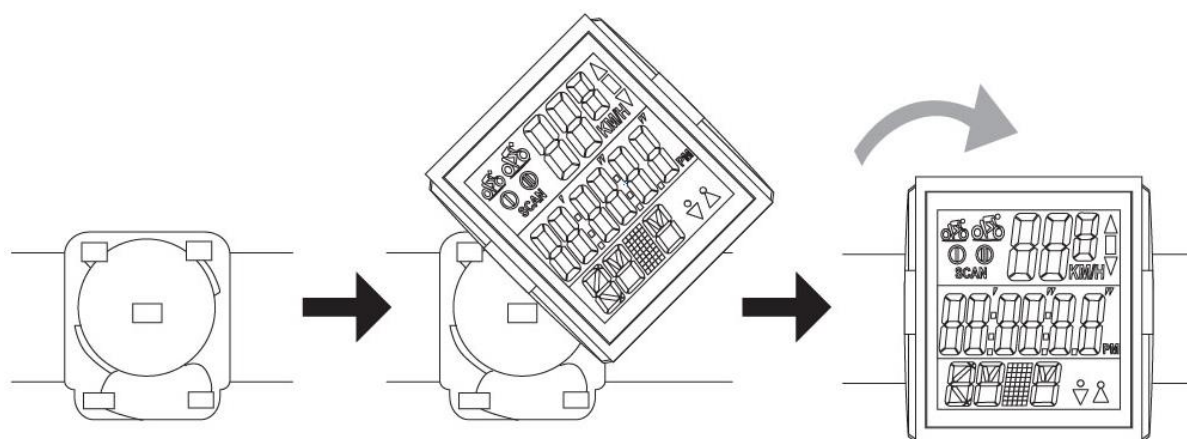
Please keep this manual for reference.



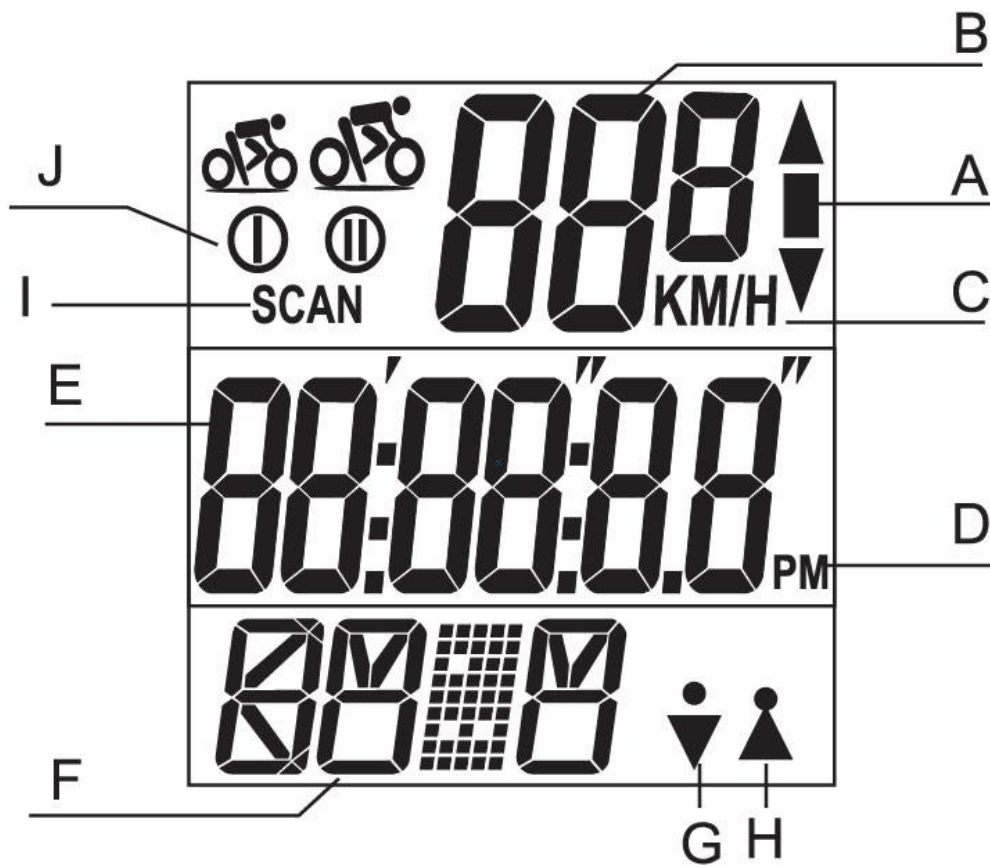
MAIN ITEM LIST

 <p>CY-200W Cycle computer</p>	 <p>Battery cover</p>	 <p>Sensor</p>
 <p>Battery cover</p>	 <p>Bracket</p>	 <p>Nylon ties</p>

HOW TO FIT THE BRACKET



DISPLAY



- A. Average Speed Symbol if Upper/Lower Current Speed
- B. Current Speed Display
- C. Speed Scale Symbol Km/h or Mile/h
- D. PM Indicator
- E. Sub Display
- F. Mode Symbol
- G. Gender - Male
- H. Gender - Female
- I. SCAN
- J. 2 Users/wheel size setting

HOW TO SETUP CYCLE COMPUTER

WHEEL CIRCUMFERENCE



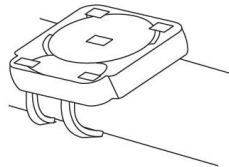
To get the accurate result, the wheel size should be correct. Mark the symbol on the tire and ride one circle. Then measure the length between two points that will be the circumference.

Or you can get wheel circumference by the following equation:

$$\text{Circumference (Ccm)} = 2 \times 3.14R \text{ (inch)} \times 2.54 \text{ (1 inch = 2.54cm)}$$

R = Radius in centimeter

INSTALLING THE BRACKET



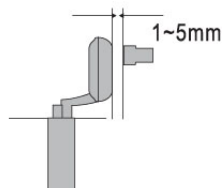
Use the rubber pad (2) tightens the bracket to the handlebar or stem.

INSTALLING THE SPEED SENSOR



Check the position of the front fork to find the suitable point to attach the speed sensor. The distance between CY-200W & the speed sensor would be in 600mm.

INSTALLING THE MAGNET



Put the Magnet on the right spokes of the front wheel and must face the speed sensor. The max distance between the speed sensor and the spoke magnet should be 5 mm. Once above items in the right position, you may go for a ride.

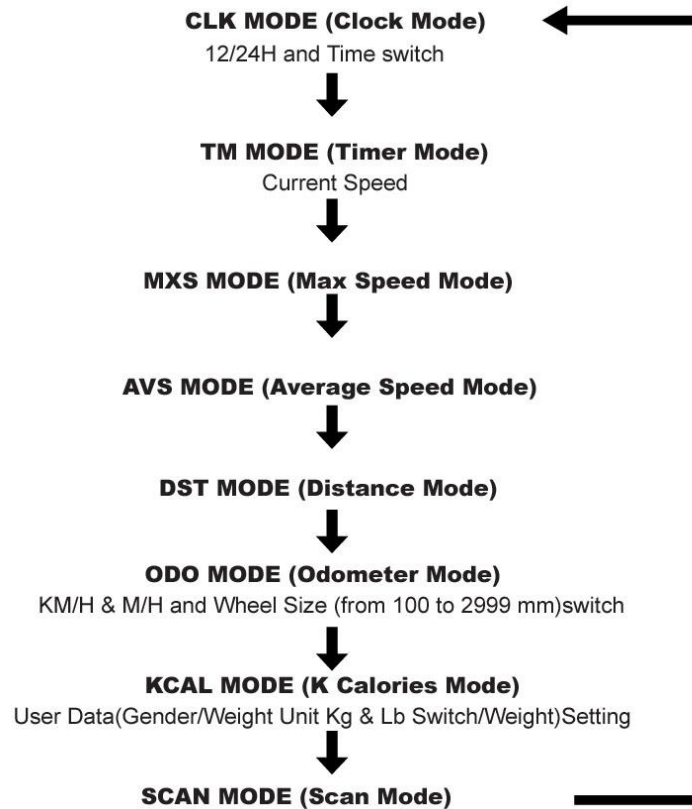
Note: Please check the handlebar that can be operated normally before riding your bicycle.

CY-200W FEATURE LIST

Watch Feature	Special Feature	Cycling Feature
Time of the Day Stopwatch Water Resistant Easy to Read Large Display	User Settings Exercise Time Cumulative Calories of the Active Exercise User Changeable Batteries(Sensor and Receiver) State-of-art Stylish Design	Trip Distance Intelligent & Elegant Wheel MOTION Device Accurate Current Speed AVG. Speed with Indicator Max. Speed Miles or Kms Multi-Windows Displays ATM(Auto Timer) Odometer Wireless Motion Activity Display 2 Users/wheel size setting

MODE CHANGE

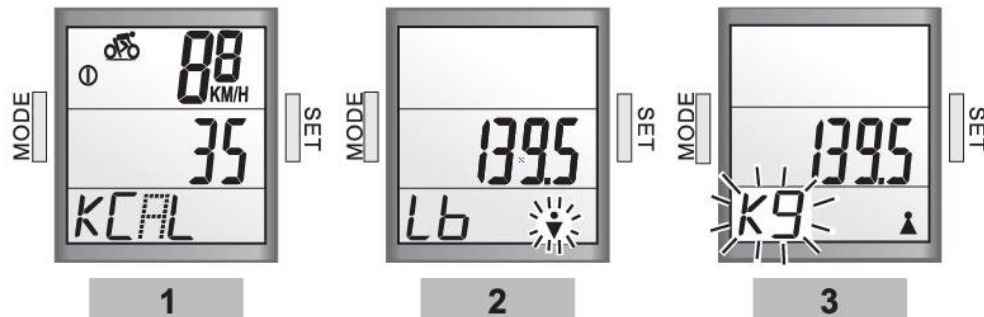
Press "M" key shortly to change mode.



OPERATION PROCESS

USER SET

In order to get the exact exercise result, enter your personal Data (Gender/Weight Unit Switch/Weight) into computer is necessary.



- Go KCAL MODE by pressing "MODE" key, then press "SET" key for 3 secs to go User Set. By pressing "SET" key & "MODE" key alternatively to enter the correct personal data. Press "MODE" key for 3 secs when complete.

FUNCTIONAL SET

CLK MODE (CLOCK MODE)



- Press "SET" key for 3 secs to go setting.
 - Press "SET" key shortly to adjust 12/24 hours.
 - Then press "MODE" & "SET" key to adjust time (hour/min/sec).
- When complete, press "MODE" key for 3 secs.

TM MODE (Auto Timer Mode)



Note: Auto Timer would operate automatically when there is motion.

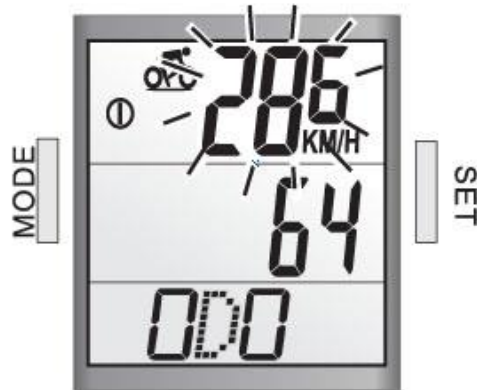
Note: Importantly, when press the "SET" key for 3 seconds, all exercise results in display would return to Zero, except ODO mode.

MOTION ACTIVITIES DISPLAY

When start to ride, the motion symbol will show on the display. If you work fast, the icon will act quickly.

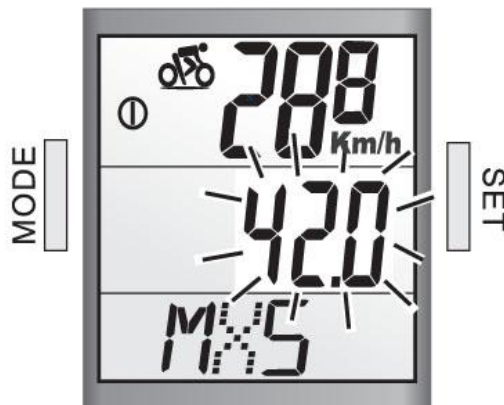
MEASURE MODE

CURRENT SPEED



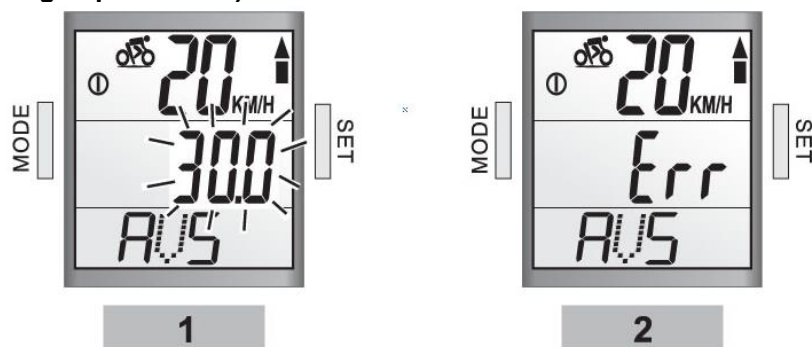
When the user works, the computer will show his/her current speed as shown in picture.

MXS MODE (Max Speed Mode)





It would display user's Max Speed from the beginning to the current point.

AVS MODE (Average Speed Mode)



It would display user's Average Speed from the beginning to the current point.

Note: If the average speed is above/below current speed, the symbol of   would show up.

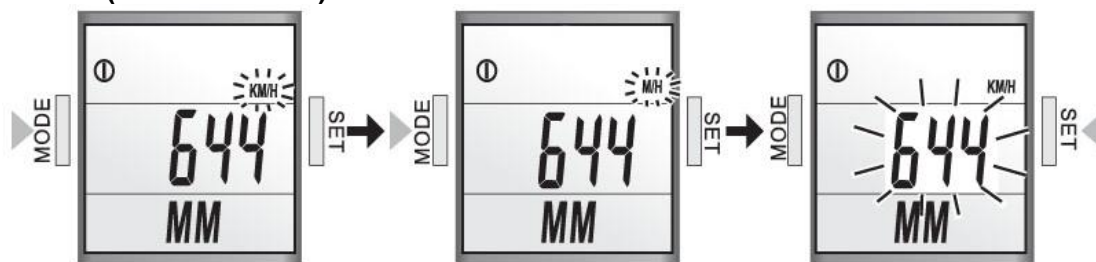
Note: If your time or distance is over the max. value (time 9 hr:59 min:59 sec) & (Distance: 999.99km), CY-200W will not allow to measure correct average speed and show "Err" on the display. Once the time & distance value has been re-set, the average speed will show normally.

DST MODE (Distance Mode)



It would display user's distance from the beginning to the current point.

ODO MODE (Odometer Mode)



Display total odometer from the beginning to the current point.

Note: Odometer mode will return to Zero, when battery has been taken out.

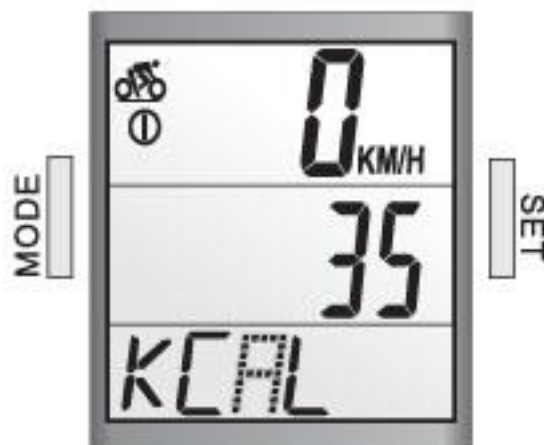
Set the wheel size from 100mm to 2999mm

- By pressing "SET" key for 3 secs to setting mode, then press "SET" & "MODE" keys alternatively to select the switch of Km/h or Mile/h and then to chose the right wheel size. Press "MODE" for 3 secs when complete setting. For further information, please refer to HOW TO SETUP CYCLE COMPUTER: WHEEL CIRCUMFERENCE.



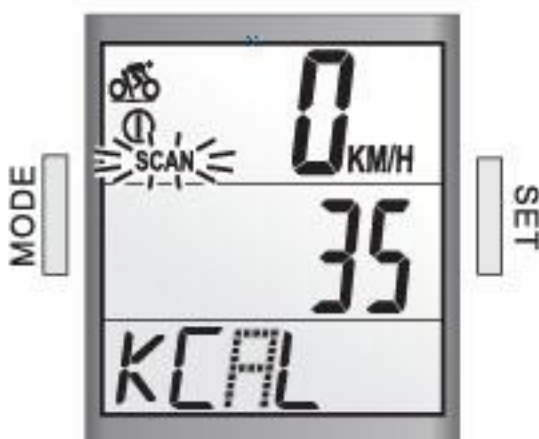
- In ODO Mode, you may also have 2 choices for the wheel size by pressing the (USER 1/2) on the back.

KCAL MODE (K Calories Mode)



- Press "MODE" key to see the record of Calories consumed from the beginning to the present point.

SCAN MODE (Scan Mode)



When in Kcal mode, press "MODE" key shortly, then the icon of scan will appear that cycle computer will automatically scan your current active result in different mode from CLK, TM, MXS, AVS, DST, ODO, to KCAL. It will automatically switch from one mode to another one every 4 seconds.

MAINTENANCE

CY-200W CYCLE COMPUTER

If the display contrast changes and figures become faint, it's time to replace the computer battery. Consider changing the computer sensor and transmitter batteries at the same time. It's a good practice.

Note: Do not expose CY-200W computer to extremely cold or hot temperatures i.e. don't leave your unite in direct sunlight for extended periods of the time.

SENSOR

Check the position of sensor and magnet periodically. For current measurement, the sensor, magnet should not get wet/rust. Or it may cause function error.

BRACKET/MAGNET/SENSOR BAND

The above items can be rinsed in surface fresh water or washed with a mild soap.

BATTERY REPLACEMENT

CY-200W COMPUTER: Unscrew the back cover. Gently remove the battery and replace it with a new battery model CR2032, the (+) side facing up.

SENSOR: Unscrew the back cover. Gently remove the battery and replace it with a new battery model CR2032, the (+) side facing up.

Note: Be careful not to over tighten and strip the casing.

TROUBLESHOOTING

Display is black or very light	The battery power may be low. Try a new battery to make sure the battery is installed correctly.
Display becomes dark or black	The unit is too hot. Place the unit in a shaded area, and it should return to normal.
The unit operates slowly or struggled	The unit is too cold. Warm the unit and it should return to normal.
Data in display varies enormously	Check your surroundings for electromagnetic or high energy interference and move away from the source of interference.
Data in display shows slowly	It may be affected by low temperature factor but it didn't influence the function reading. When the temperature rises, the data reading/switch will back to the normal.
Current speed does not appear	It may be caused by the following situation. The distance & position between magnet and sensor to adjust.

SPECIFICATIONS

	Receiver	Speed Sensor
Operating Temperature	0°C – 40°C	0°C – 40°C
Storage Temperature	-10°C – 50°C	-10°C – 50°C
Emitted Frequency	N/A	122KHz ± 5%
Battery	3 volt lithium 2032 cell	3 volt lithium 2032 cell
Weight	30.6 grams	20 grams

Stopwatch Range	0 ~ 9 (hour): 59 (minute): 59 (second) Accuracy 1/100 seconds
Time Range	0 ~ 9 (hour): 59 (minute): 59 (second)
Current Speed Range	0 ~ 99.9KM/0 ~ 62 Mile
Average Speed Range	0 ~ 99.9KM/0 ~ 62 Mile
Maximum Speed Range	0 ~ 99.9KM/0 ~ 62 Mile
(Trip)Distance Range	0 ~ 999.99KM/0 ~ 600 Mile
Odometer Range	0 ~ 9999.9KM/0 ~ 6200 Mile
Calories Used Range	9999 Kcal

WHEEL SIZE CHART

Tire Scale	L(mm)	Tire Scale	L(mm)
14 x 1.50	1020	26 x 1.75	2023
14 x 1.75	1055	26 x 1.95	2050
16 x 1.50	1185	26 x 2.00	2055
16 x 1.75	1195	26 x 2.10	2068
18 x 1.50	1340	26 x 2.125	2070
18 x 1.75	1350	26 x 2.35	2083
20 x 1.75	1515	26 x 3.00	2170
20 x 1-3/8	1615	27 x 1	2145
20 x 1-3/8	1770	27 x 1-1/8	2155
22 x 1-1/2	1785	27 x 1-1/4	2161
24 x 1	1753	27 x 1-3/8	2169
24 x 3/4 Tubular	1785	650 x 35A	2090
24 x 1-1/8	1795	650 X 38A	2125
24 x 1-1/4	1905	650 X 38B	2105
24 x 1.75	1890	700 X 18C	2070
24 x 2.00	1925	700 X 19C	2080
24 x 2.125	1965	700 X 20C	2086
26 x 7/8	1920	700 X 23C	2096
26 x 1(59)	1913	700 X 25C	2105
26 x 1(65)	1952	700 X 28C	2136
26 x 1.25	1953	700 X 30C	2170
26 x 1-1/8	1970	700 X 32C	2155
26 x 1-3/8	2068	700C Tubular	2130
26 x 1-1/2	2100	700 X 35C	2168
26 x 1.40	2005	700 X 38C	2180
26 x 1.50	2010	700 X 40C	2200

ENVIRONMENT PROTECTION

After the product lifespan expired or if the possible repairing is uneconomic, dispose it according to the local laws and environmentally friendly in the nearest scrapyard.

By proper disposal you will protect the environment and natural sources. Moreover, you can help protect human health. If you are not sure in correct disposing, ask local authorities to avoid law violation or sanctions.

Don't put the batteries among house waste but hand them in to the recycling place.

TERMS AND CONDITIONS OF WARRANTY, WARRANTY CLAIMS

General Conditions of Warranty and Definition of Terms

All Warranty Conditions stated hereunder determine Warranty Coverage and Warranty Claim Procedure. Conditions of Warranty and Warranty Claims are governed by Act No. 89/2012 Coll. Civil

Code, and Act No. 634/1992 Coll., Consumer Protection, as amended, also in cases that are not specified by these Warranty rules.

The seller is SEVEN SPORT s.r.o. with its registered office in Borivojova Street 35/878, Prague 13000, Company Registration Number: 26847264, registered in the Trade Register at Regional Court in Prague, Section C, Insert No. 116888.

According to valid legal regulations it depends whether the Buyer is the End Customer or not.

“The Buyer who is the End Customer” or simply the “End Customer” is the legal entity that does not conclude and execute the Contract in order to run or promote his own trade or business activities.

“The Buyer who is not the End Customer” is a Businessman that buys Goods or uses services for the purpose of using the Goods or services for his own business activities. The Buyer conforms to the General Purchase Agreement and business conditions.

These Conditions of Warranty and Warranty Claims are an integral part of every Purchase Agreement made between the Seller and the Buyer. All Warranty Conditions are valid and binding, unless otherwise specified in the Purchase Agreement, in the Amendment to this Contract or in another written agreement.

Warranty Conditions

Warranty Period

The Seller provides the Buyer a 24 months Warranty for Goods Quality, unless otherwise specified in the Certificate of Warranty, Invoice, Bill of Delivery or other documents related to the Goods. The legal warranty period provided to the Consumer is not affected.

By the Warranty for Goods Quality, the Seller guarantees that the delivered Goods shall be, for a certain period of time, suitable for regular or contracted use, and that the Goods shall maintain its regular or contracted features.

The Warranty does not cover defects resulting from (if applicable):

- User's fault, i.e. product damage caused by unqualified repair work, improper assembly, insufficient insertion of seat post into frame, insufficient tightening of pedals and cranks
- Improper maintenance
- Mechanical damages
- Regular use (e.g. wearing out of rubber and plastic parts, moving mechanisms, joints etc.)
- Unavoidable event, natural disaster
- Adjustments made by unqualified person
- Improper maintenance, improper placement, damages caused by low or high temperature, water, inappropriate pressure, shocks, intentional changes in design or construction etc.

Warranty Claim Procedure

The Buyer is obliged to check the Goods delivered by the Seller immediately after taking the responsibility for the Goods and its damages, i.e. immediately after its delivery. The Buyer must check the Goods so that he discovers all the defects that can be discovered by such check.

When making a Warranty Claim the Buyer is obliged, on request of the Seller, to prove the purchase and validity of the claim by the Invoice or Bill of Delivery that includes the product's serial number, or eventually by the documents without the serial number. If the Buyer does not prove the validity of the Warranty Claim by these documents, the Seller has the right to reject the Warranty Claim.

If the Buyer gives notice of a defect that is not covered by the Warranty (e.g. in the case that the Warranty Conditions were not fulfilled or in the case of reporting the defect by mistake etc.), the Seller is eligible to require a compensation for all the costs arising from the repair. The cost shall be calculated according to the valid price list of services and transport costs.

If the Seller finds out (by testing) that the product is not damaged, the Warranty Claim is not accepted. The Seller reserves the right to claim a compensation for costs arising from the false Warranty Claim.

In case the Buyer makes a claim about the Goods that is legally covered by the Warranty provided by the Seller, the Seller shall fix the reported defects by means of repair or by the exchange of the damaged part or product for a new one. Based on the agreement of the Buyer, the Seller has the right to exchange the defected Goods for a fully compatible Goods of the same or better technical characteristics. The Seller is entitled to choose the form of the Warranty Claim Procedures described in this paragraph.

The Seller shall settle the Warranty Claim within 30 days after the delivery of the defective Goods, unless a longer period has been agreed upon. The day when the repaired or exchanged Goods is handed over to the Buyer is considered to be the day of the Warranty Claim settlement. When the Seller is not able to settle the Warranty Claim within the agreed period due to the specific nature of the Goods defect, he and the Buyer shall make an agreement about an alternative solution. In case such agreement is not made, the Seller is obliged to provide the Buyer with a financial compensation in the form of a refund.



SEVEN SPORT s.r.o.

Registered Office:	Borivojova 35/878, 130 00 Praha 3, Czech Republic
Headquarters:	Delnicka 957, 749 01 Vitkov, Czech Republic
Warranty & Service Centre:	Cermenska 486, 749 01 Vitkov, Czech Republic
CRN:	26847264
VAT ID:	CZ26847264
Phone:	+420 556 300 970
E-mail:	eshop@insportline.cz reklamace@insportline.cz servis@insportline.cz
Web:	www.insportline.cz

SK

INSPORTLIN s.r.o.

Headquarters, Warranty & Service centre:	Elektricka 6471, 911 01 Trenčin, Slovakia
CRN:	36311723
VAT ID:	SK2020177082
Phone:	+421(0)326 526 701
E-mail:	objednavky@insportline.sk reklamacie@insportline.sk servis@insportline.sk
Web:	www.insportline.sk

Date of Sale:

Stamp and Signature of Seller: