



USER MANUAL – EN

IN 8947 Vibration Machine VibroGym inSPORTline Charles



CONTENTS

INTRODUCTION	3
PACKAGE LIST	3
EXPLODED DRAWING.....	4
PARTS LIST	5
ASSEMBLY STEPS	8
CONSOLE	9
SAFETY PRECAUTIONS.....	11
MAINTENANCE AND STORING	13
STORING	13
REGULAR MAINTENANCE	14
CLEANING	14
PRODUCT SPECIFICATION	14
TERMS AND CONDITIONS OF WARRANTY, WARRANTY CLAIMS.....	14

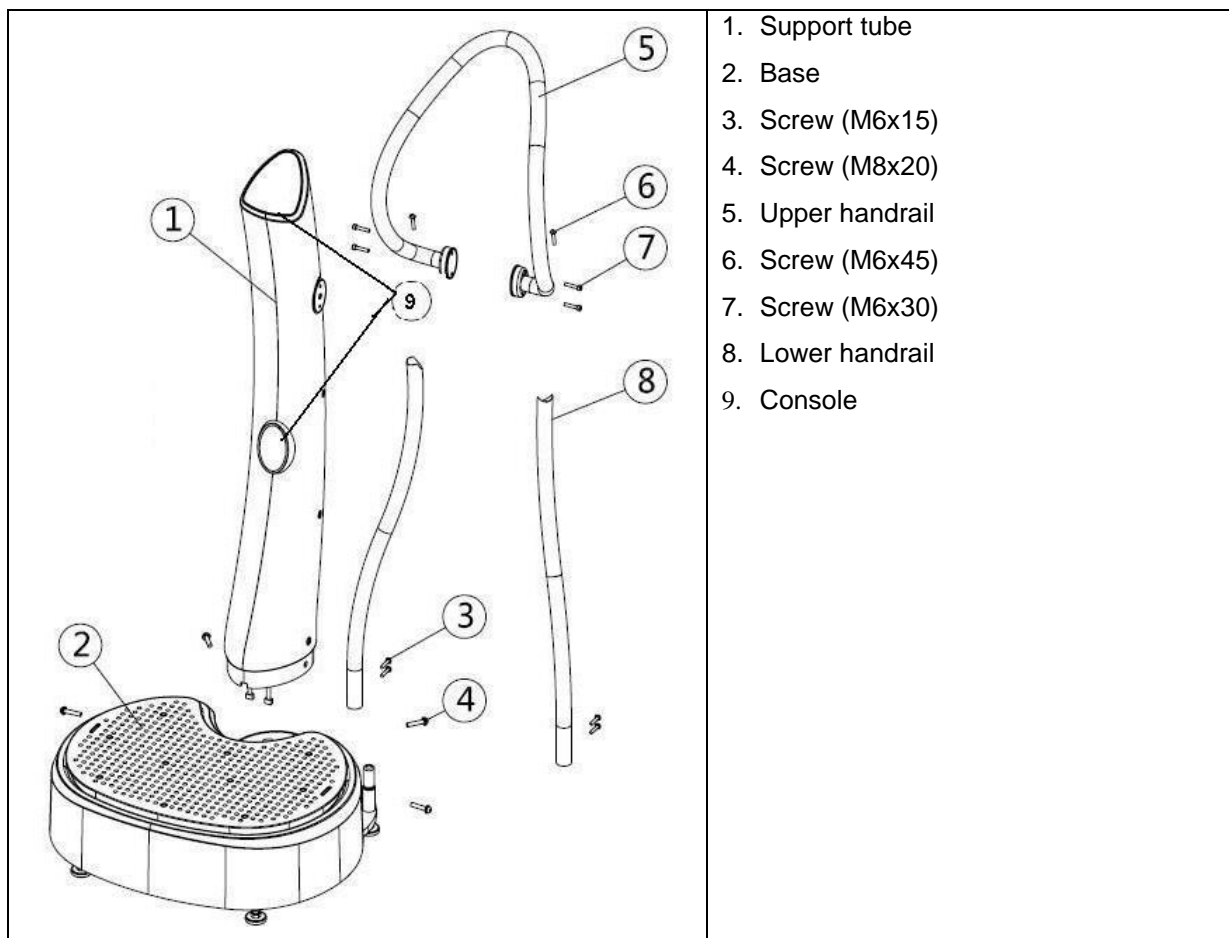
INTRODUCTION

Thank you for purchasing this product. Before use, read the entire manual carefully and retain it for future reference.

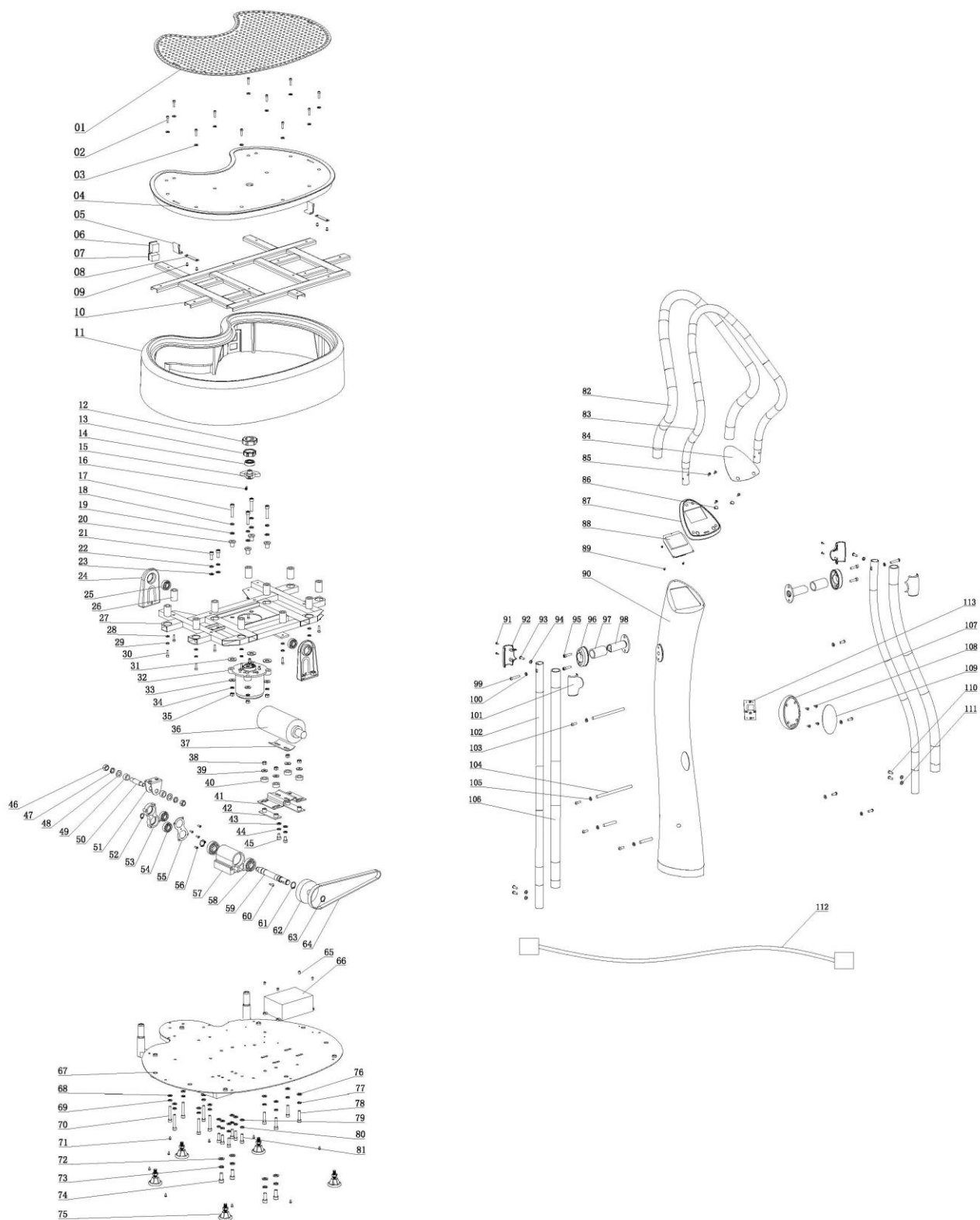
Category SC (according EN957 standard) suitable for home and club using.

The producer keeps the right to change sticker design or material colour without having to give a notice. All the pictures of the product (design, colour, stickers etc). are only for illustration purposes.

PACKAGE LIST



EXPLODED DRAWING



PARTS LIST

No.	Description	Qty
1	Foot cushion	1
2	Inner hexagon cylindrical screw	11
3	Washer	11
4	Footplate	1
5	Strap fixer	2
6	Switch	1
7	Socket	1
8	Metal clip	2
9	Hexagon nipples	4
10	Support frame	1
11	Base casing	1
12	Rubber ring	1
13	Bearing bushing	1
14	Deep groove ball bearing	1
15	Eccentric block	1
16	Inner hexagon cylindrical screw	1
17	Inner hexagon cylindrical screw	4
18	Spring washer	4
19	Washer	4
20	Insulation sleeve of spiral motor	4
21	Inner hexagon cylindrical screw	2
22	Spring washer	2
23	Washer	2
24	Footplate bracket assembly	2
25	Deep groove ball bearing	2
26	Vibration absorber	11
27	Whole footplate	1
28	Washer	11
29	Spring washer	11
30	Inner hexagon cylindrical screw	11
31	Washer	4
32	Spiral motor	1
33	Big washer	4
34	Spring washer	4
35	Hexagon nipple	4

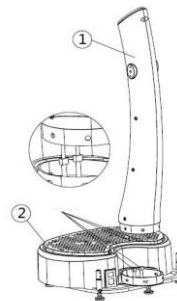
36	Oscillation motor	1
37	Insulation pad	1
38	Hexagon nipple	4
39	Big washer	4
40	Insulation washer of motor seat	4
41	Motor seat	1
42	Insulation pad of motor seat	2
43	Washer	4
44	Spring washer	4
45	Inner hexagon cylindrical screw	4
46	Hexagon nut	2
47	Spring washer	2
48	Flat washer	2
49	Locating ring	2
50	Connecting rod axle	1
51	Connecting rod bracket	1
52	Clamp spring of axle	1
53	Connecting rod	1
54	Deep groove ball bearing	2
55	Connecting rod cap	1
56	Cross screw	5
57	Aluminium bearing sleeve	1
58	Deep groove ball bearing	2
59	Shaft	1
60	Eccentric shaft	1
61	Clamp spring of axle	2
62	Belt pulley	1
63	Clamp spring of axle	1
64	Motor belt	1
65	Cross screw	4
66	Controller (PCB)	1
67	Metal base plate	1
68	Washer	6
69	Spring washer	6
70	Inner hexagon cylindrical screw	6
71	Cross self-drilling screw	9
72	Washer	4
73	Spring washer	4

74	Inner hexagon cylindrical screw	4
75	Adjustable foot	5
76	Washer	4
77	Spring washer	4
78	Inner hexagon cylindrical screw	4
79	Washer	6
80	Spring washer	6
81	Inner hexagon cylindrical screw	6
82	Upper protection foam	1
83	Upper handrail	1
84	Main control panel sticker	1
85	Cross self-drilling screw	4
86	Sensor chip BMI	2
87	Main control panel	1
88	Display (PCB)	1
89	Cross self-drilling screw	3
90	Column	1
91	Cross self-drilling screw	4
92	Handrail front plastic cover	2
93	Inner hexagon disc screw	2
94	Flat washer	2
95	Inner hexagon cylindrical screw	4
96	Handrail flange plastic cover	2
97	Handrail flange protection foam	2
98	Handlebar holder	2
99	Inner hexagon screw	2
100	Flat washer	2
101	Handrail back plastic cover	2
102	Lower handrail tube	2
103	Inner hexagon disk screw	8
104	Column location pin	4
105	Washer	8
106	Lower handrail protection foam	2
107	Lower control panel	1
108	Cross self-drilling screw	4
109	Lower control sticker	1
110	Inner hexagon screw	4
111	Washer	4

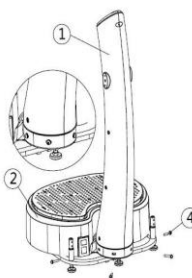
112	Power cord	1
113	LED lower controller display (PCB)	1

ASSEMBLY STEPS

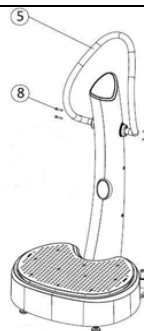
STEP 1: Take the support tube (1) and base (2) out from the package. Connect upper and lower wire.



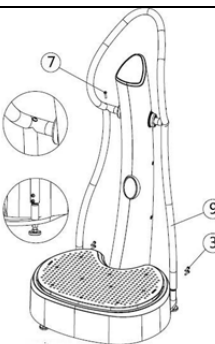
STEP 2: Insert the tube (1) into base (2). Secure with screws (4) and install the foot cushion.



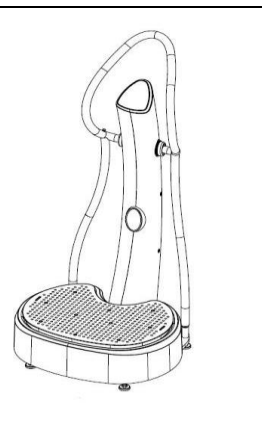
STEP 3: Attach the upper handrail (5) to the tube and secure with screw (8).



STEP 4: Take the lower handrail (9) out from the package and attach it using screws (3 and 7) as shown in picture.

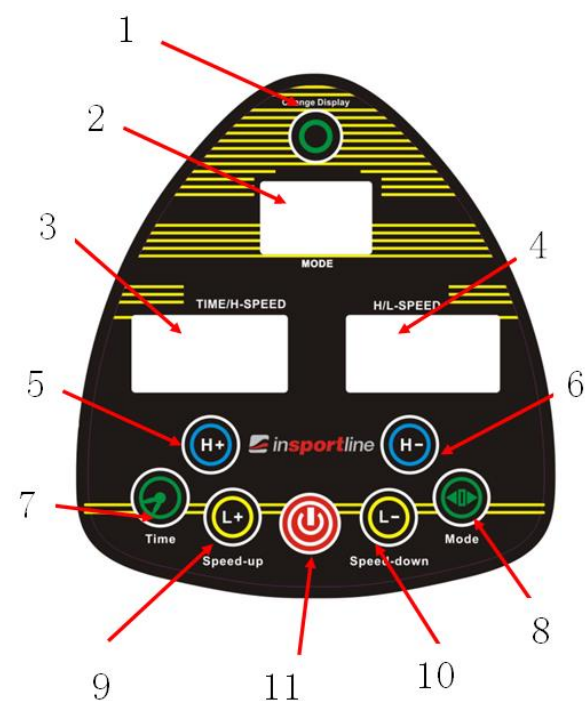


Complete the assembly. The final state is shown in the right picture. Check if all bolts and nuts are properly tightened.

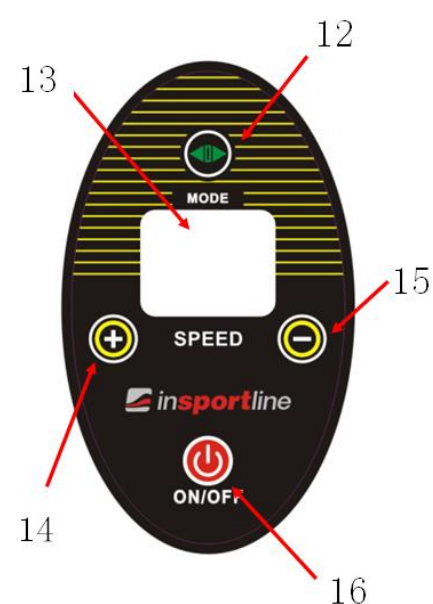


CONSOLE

UPPER CONSOLE



MIDDLE CONSOLE



UPPER CONSOLE

1. Use this key to switch between time and speed displaying.
2. MODE window: displays current mode (manual or automatic).
3. TIME and OSCILLATION SPEED window, that displays time countdown or oscillation speed. Mutual switching.
4. SPEED window: it displays oscillation or spiral vibration speed. Mutual switching.
5. Increasing oscillation speed. You can increase the speed in the manual mode in range from 1 to 60 (level).
6. Decreasing oscillation speed. Push this key to decrease speed in manual mode. The lowest level is: 1.
7. Using this key, you can set the running time of this device. It is the entire period of device working. If it reaches this limit, it stops automatically. Set in the time following next steps:
 - Default time is 10 mins.
 - After selecting the manual mode, push this key before starting the machine.
 - Using keys H+ and H- set required time.
 - Using keys L+ and L- set spiral-vibration time.
 - After time adjustment push START/STOP and it starts working according the pre-set time. If it reaches the pre-set limit, it stops automatically.
8. It is possible to adjust the speed manually in the manual mode. In automatic programs, all runs according to pre-set time and speed. Choose mode in standby mode and push key 11 or 16 to start exercising. The device starts working in selected mode.
9. Increasing speed of spiral vibrations: in manual mode, use it to increase spiral vibration speed from level 1 to level 60.
10. Decreasing speed of spiral vibrations: in manual mode, use it to decrease the spiral vibration speed up to the lowest level (1).
11. Key START/STOP: starting or stopping this device.

MIDDLE CONSOLE

12. Key for mode selection in circle: HL, P1, P2, P3. Function is same as upper console.
13. Display window: actual mode or speed or time.
14. Speed increasing: use it in the manual mode to increase oscillation and vibration speed in the same time.
15. Speed decreasing: use it in manual mode to decrease oscillation and vibration speed in the same time.
16. START/STOP: for starting or stopping this device.

AUTOMATIC PROGRAMS

PROGRAM PROFILE P1:

Oscillation:	30 34 38 42 46 50 54 58 54 50 46 42 38 34 30 26 22 18 14 10 6 2 6 10 18 22 26
Vibration:	30 26 22 18 14 10 6 2 6 10 14 18 22 26 30 34 38 42 46 50 54 58 54 50 46 42 38 34

Time interval: 5 seconds

PROGRAM PROFILE P2:

Oscillation:	5 10 15 20 25 30 35 40 45 50 55 60 55 50 45 40 35 30 25 20 15 10 5
Vibration:	Stop
Oscillation:	Stop
Vibration:	5 10 15 20 25 30 35 40 45 50 55 60 55 50 45 40 35 30 25 20 15 10 5

Time interval: 10 seconds

PROGRAM PROFILE P3:

Oscillation:	2 40
Vibration:	40 2

Time interval: 5 seconds

SAFETY PRECAUTIONS

Read this manual carefully and retain it for future reference. Observe all warnings and precautions to avoid damage or injury. Use it properly and according to this manual.

To use it correctly, follow these instructions:

- Regularly check all bolts, nuts and parts for damage or wearing. Never use damaged or worn product. For repair contact authorized service. Don't do any modification. Usage and maintenance must be done according to this manual.
- Check the power cord. Never damage or crush it. Never let it under this device.
Improper cord manipulation could result in fire or in socket or cord damage.
- Never use electric outlet for more devices.
This could result in fire or injury. Or you could decrease product effectiveness.
- Use only a dry cloth to clean cord, socket or outlet.
Dirt on electric parts could result in improper connection.
- Place it at least 20 cm from a wall.
Have enough space for use and maintain ventilation. For higher safety keep a safety clearance of at least 0.6 m round this device.
- Place it only on flat, clean and solid surface.
Putting on an uneven surface could cause increased noisiness or product instability. Use legs to level this device, if necessary.
- After stopping your workout, push first the STOP button. Leave this device only if it has fully stopped.
Leaving a working machine could cause serious injury.
- Remove the supply cord from outlet if this device is not used.
You can so decrease power consumption and protect it from fire or damage.
- Never run or jump on the vibration mat.
Running or jumping could damage it.

- Older people and children may use it only under an adult person who is experienced in product using.

You can so prevent yourself from being hurt.

- Only one person can use this device at time.
- Never exceed max. user weight of 120 kg to avoid product damage.
- Before cleaning, use a dry cloth and wipe all water and humidity. Never let water or liquids to penetrate inside this device.

Water could damage electric components.

- Use adequate agents to clean device surface.

First use a dry cloth to wipe out dirt. Thereafter use a damp cloth to clean it.

- Clean and dry it properly before storing.

Remove water and humidity to protect it from going rusty.

- Never handle power cord with wet hands.

You can avoid electric shock.

- Don't bend the supply cord. Never put any heavy object on the cable.

Damaged supply cord can cause fire.

- Never use this device if the power cord or outlet is damaged.

You can avoid so product damage or personal injury.

- Never use it in wet conditions or near water.

Water could cause short circuit or injury.

- Never put any object onto the vibration area.

You could damage it or disturb electric circuit.

- Never use water sprayer, petrol, benzene, thinner or chlorine to clean it.

These agents could cause fire or damage or electric components.

- Before starting cleaning or maintenance, the supply cord should be removed from electric outlet.

You can avoid discharge.

- If some smell comes out from this device, stop using and remove the cord from outlet.

- You can avoid discharge.

- Only a professional technician may repair or to modify it.

Improper modification can result in product dysfunction, breakage, fire or injury.

Before starting some exercise, consult your physician. It is especially necessary, if you take some care or if you have following health problems:

- Epilepsy
- Diabetes
- Heart problems
- Spinal problems

- If you have knee or hip implants
- If you have a pacemaker
- Contraception or metal implants
- Carcinoma or oncologic illness
- Infection
- Postoperative state
- Pregnancy
- Chronic migraine

ADVICES

For better removing toxins out from your body, we recommend drinking 500 ml of pure water before each workout. Impro your lifestyle by daily drinking of approx. 3000 ml of water. Regular and proper water intake provides you with a lot of benefits:

- Better digestion
- Prevention against kidney illness
- Support for your metabolism
- Improving your blood circulation and cardiovascular system
- Better immunity
- Stress relieving
- Better vitality
- Prevention against dermal complications

MAINTENANCE AND STORING

STORING

1. Don't store it:
 - Near fire or heat sources.
 - Under direct sunrays.
 - In a wet or dusty place or near chemicals.
2. Usage and storage conditions:
 - Working temperature: 0-35°C
 - Storage temperature: 5-50°C
 - Air humidity: less than 40-80%
3. Use a protective cover for long-time storing as prevention against dust.
4. Protect it from direct sunlight and from extreme temperatures.
5. Never bend or crush supply cord.

REGULAR MAINTENANCE

1. Before cleaning or maintenance, switch off this device and remove the supply cord from electric outlet.
2. Don't let this device working too long for the first time.
3. After each using, switch it off and remove the cord from electric outlet.
4. Never use it in places with high air humidity (near a swimming pool or in a bath room etc.).
5. Don't use it in places with high dust concentration in air. Protect it from oil, thinner or danger substances and gases.
6. Never put heavy or sharp objects onto its surface as prevention against scratching.

CLEANING

Don't use abrasives, petrol or other thinners to clean it. Never use insecticides.

PRODUCT SPECIFICATION

Input voltage	220V-240V / 50Hz
Oscillation motor	500W
Vibration motor	300W
Speed range	Level 1-60
Display	Program / Time / Speed 3 LED
Dimensions	750 mm (L) x 710 mm (W) x 1460 mm (H)
Max. user weight	120 kg
Net weight	36 kg
Weight with package	40 kg

TERMS AND CONDITIONS OF WARRANTY, WARRANTY CLAIMS

General Conditions of Warranty and Definition of Terms

All Warranty Conditions stated hereunder determine Warranty Coverage and Warranty Claim Procedure. Conditions of Warranty and Warranty Claims are governed by Act No. 40/1964 Coll. Civil Code, Act No. 513/1991 Coll., Commercial Code, and Act No. 634/1992 Coll., Consumer Protection Act, as amended, also in cases that are not specified by these Warranty rules.

The seller is SEVEN SPORT s.r.o. with its registered office in Borivojova Street 35/878, Prague 13000, Company Registration Number: 26847264, registered in the Trade Register at Regional Court in Prague, Section C, Insert No. 116888.

According to valid legal regulations it depends whether the Buyer is the End Customer or not.

"The Buyer who is the End Customer" or simply the "End Customer" is the legal entity that does not conclude and execute the Contract in order to run or promote his own trade or business activities.

"The Buyer who is not the End Customer" is a Businessman that buys Goods or uses services for the purpose of using the Goods or services for his own business activities. The Buyer conforms to the General Purchase Agreement and business conditions to the extent specified in the Commercial Code.

These Conditions of Warranty and Warranty Claims are an integral part of every Purchase Agreement made between the Seller and the Buyer. All Warranty Conditions are valid and binding, unless

otherwise specified in the Purchase Agreement, in the Amendment to this Contract or in another written agreement.

Warranty Conditions

Warranty Period

The Seller provides the Buyer a 24 months Warranty for Goods Quality, unless otherwise specified in the Certificate of Warranty, Invoice, Bill of Delivery or other documents related to the Goods. The legal warranty period provided to the Consumer is not affected.

By the Warranty for Goods Quality, the Seller guarantees that the delivered Goods shall be, for a certain period of time, suitable for regular or contracted use, and that the Goods shall maintain its regular or contracted features.

The Warranty does not cover defects resulting from (if applicable):

- User's fault, i.e. product damage caused by unqualified repair work, improper assembly, insufficient insertion of seat post into frame, insufficient tightening of pedals and cranks
- Improper maintenance
- Mechanical damages
- Regular use (e.g. wearing out of rubber and plastic parts, moving mechanisms, joints etc.)
- Unavoidable event, natural disaster
- Adjustments made by unqualified person
- Improper maintenance, improper placement, damages caused by low or high temperature, water, inappropriate pressure, shocks, intentional changes in design or construction etc.

Warranty Claim Procedure

The Buyer is obliged to check the Goods delivered by the Seller immediately after taking the responsibility for the Goods and its damages, i.e. immediately after its delivery. The Buyer must check the Goods so that he discovers all the defects that can be discovered by such check.

When making a Warranty Claim the Buyer is obliged, on request of the Seller, to prove the purchase and validity of the claim by the Invoice or Bill of Delivery that includes the product's serial number, or eventually by the documents without the serial number. If the Buyer does not prove the validity of the Warranty Claim by these documents, the Seller has the right to reject the Warranty Claim.

If the Buyer gives notice of a defect that is not covered by the Warranty (e.g. in the case that the Warranty Conditions were not fulfilled or in the case of reporting the defect by mistake etc.), the Seller is eligible to require a compensation for all the costs arising from the repair. The cost shall be calculated according to the valid price list of services and transport costs.

If the Seller finds out (by testing) that the product is not damaged, the Warranty Claim is not accepted. The Seller reserves the right to claim a compensation for costs arising from the false Warranty Claim.

In case the Buyer makes a claim about the Goods that is legally covered by the Warranty provided by the Seller, the Seller shall fix the reported defects by means of repair or by the exchange of the damaged part or product for a new one. Based on the agreement of the Buyer, the Seller has the right to exchange the defected Goods for a fully compatible Goods of the same or better technical characteristics. The Seller is entitled to choose the form of the Warranty Claim Procedures described in this paragraph.

The Seller shall settle the Warranty Claim within 30 days after the delivery of the defective Goods, unless a longer period has been agreed upon. The day when the repaired or exchanged Goods is handed over to the Buyer is considered to be the day of the Warranty Claim settlement. When the Seller is not able to settle the Warranty Claim within the agreed period due to the specific nature of the Goods defect, he and the Buyer shall make an agreement about an alternative solution. In case such agreement is not made, the Seller is obliged to provide the Buyer with a financial compensation in the form of a refund.

**SEVEN SPORT s.r.o.**

Registered Office: Borivojova 35/878, 130 00 Praha 3, Czech Republic
Headquarters: Delnicka 957, 749 01 Vitkov, Czech Republic
Warranty & Service Centre: Cermenska 486, 749 01 Vitkov, Czech Republic
CRN: 26847264
VAT ID: CZ26847264
Phone: +420 556 300 970
E-mail: eshop@insportline.cz
reklamace@insportline.cz
servis@insportline.cz
Web: www.insportline.cz

SK**INSPORTLIN s.r.o.**

Headquarters, Warranty & Service centre: Elektricka 6471, 911 01 Trencin, Slovakia
CRN: 36311723
VAT ID: SK2020177082
Phone: +421(0)326 526 701
E-mail: objednavky@insportline.sk
reklamacie@insportline.sk
servis@insportline.sk
Web: www.insportline.sk

Date of Sale:

Stamp and Signature of Seller: