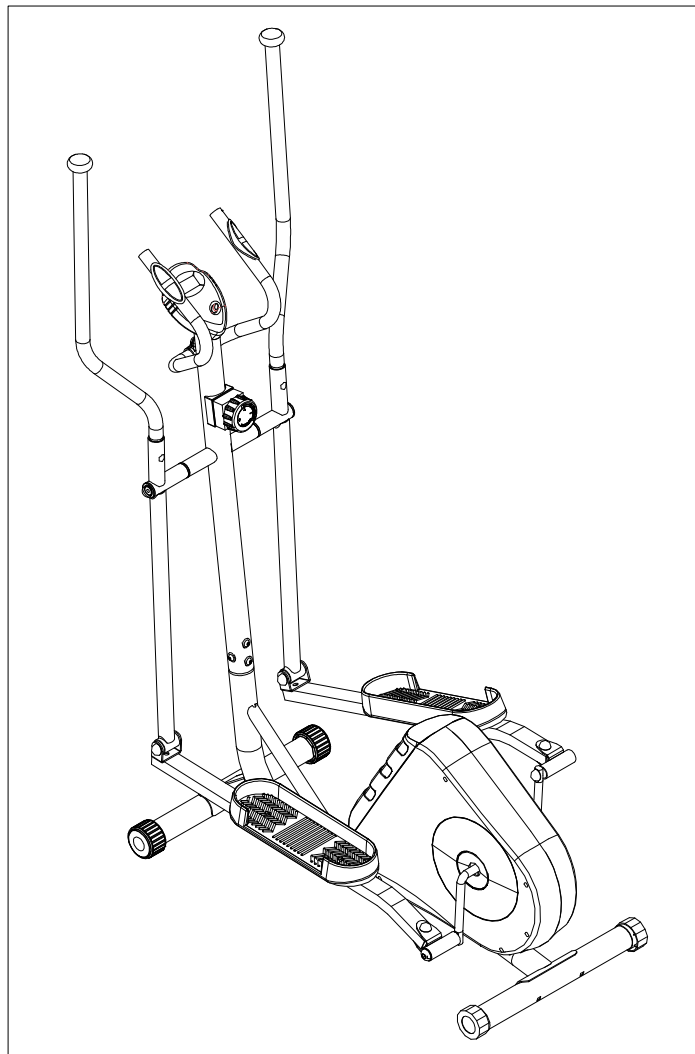




USER MANUAL - EN
IN 7560 Elliptical inSPORTline Missouri (YK-BA433E)



IMPORTANT!

PLEASE READ THIS MANUAL CAREFULLY BEFORE USING THE ELLIPTICAL

CONTENTS

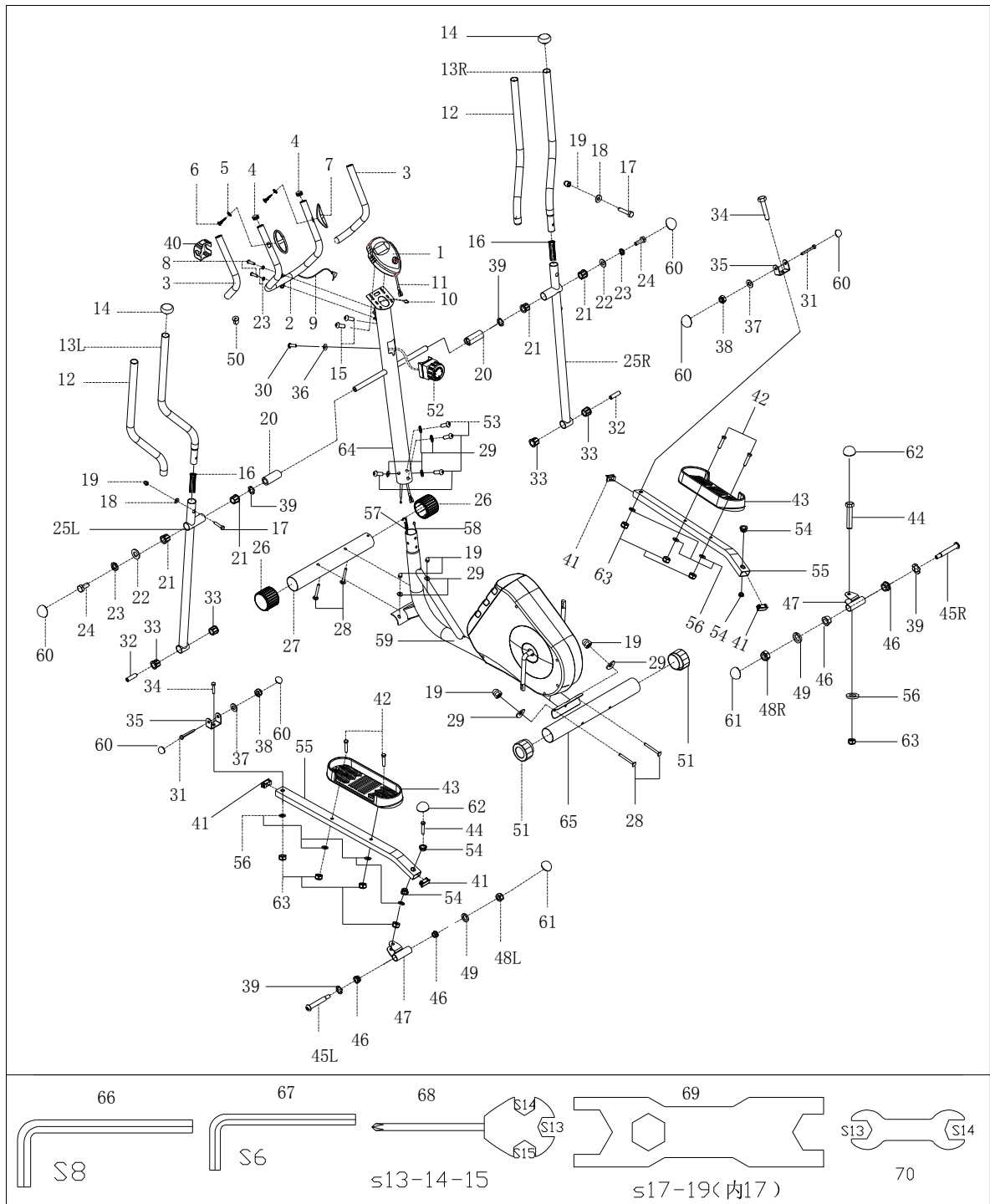
IMPORTANT SAFETY INFORMATION..... 3
EXPLODED VIEW 4
PARTS LIST..... 5
ASSEMBLY 7
TERMS AND CONDITIONS OF WARRANTY, WARRANTY CLAIMS 11

IMPORTANT SAFETY INFORMATION

We thank you for choosing our product. To guarantee your safety and health, please use this equipment correctly. Please read the information as below carefully before using this equipment.

1. It is important to read this entire manual before assembling and using the equipment. Safe and effective use can only be achieved if the equipment is assembled, maintained and used properly.
2. Before starting any exercise program you should consult your doctor to determine if you have any medical or physical conditions that could put your health and safety at risk, or prevent you from using the equipment properly. Your doctor's advice is essential if you are taking medication that affects your heart rate, blood pressure or cholesterol level.
3. Be aware of your body's signals. Incorrect or excessive exercise can damage your health. Stop exercising if you experience any of the following symptoms: pain, tightness in your chest, irregular heartbeat, extreme shortness of breath, lightheadedness, dizziness or feelings of nausea. If you do experience any of these conditions you should consult your doctor before continuing with your exercise program.
4. Keep children and pets away from the equipment. The equipment is designed for adult use only.
5. Use the equipment on a solid, flat level surface with a protective cover for your floor or carpet. To ensure safety, the equipment should have at least 0.5 meters of free space all around it.
6. Before using the equipment, check that the nuts and bolts are securely tightened. Always use the equipment as indicated. If you find any defective components while assembling or checking the equipment, or if you hear any unusual noises coming from the equipment during use, stop immediately. Do not use the equipment until the problem has been rectified.
7. There are many functions of the computer, which value will show when using the equipment according the amount of exercise ,here warmly remind you that the value of heart pulse just give you some reference.
8. Wear suitable clothing while using the equipment. Avoid wearing loose clothing that may get caught in the equipment or that may restrict or prevent movement.
9. This equipment is designed for indoor and family use only.
10. Maximum weight of user: 110KG.
11. Care must be taken when lifting or moving the equipment so as not to injure your back
12. Please save this manual and assembling tools well.
13. The equipment is not suitable for therapeutic use.

EXPLODED VIEW



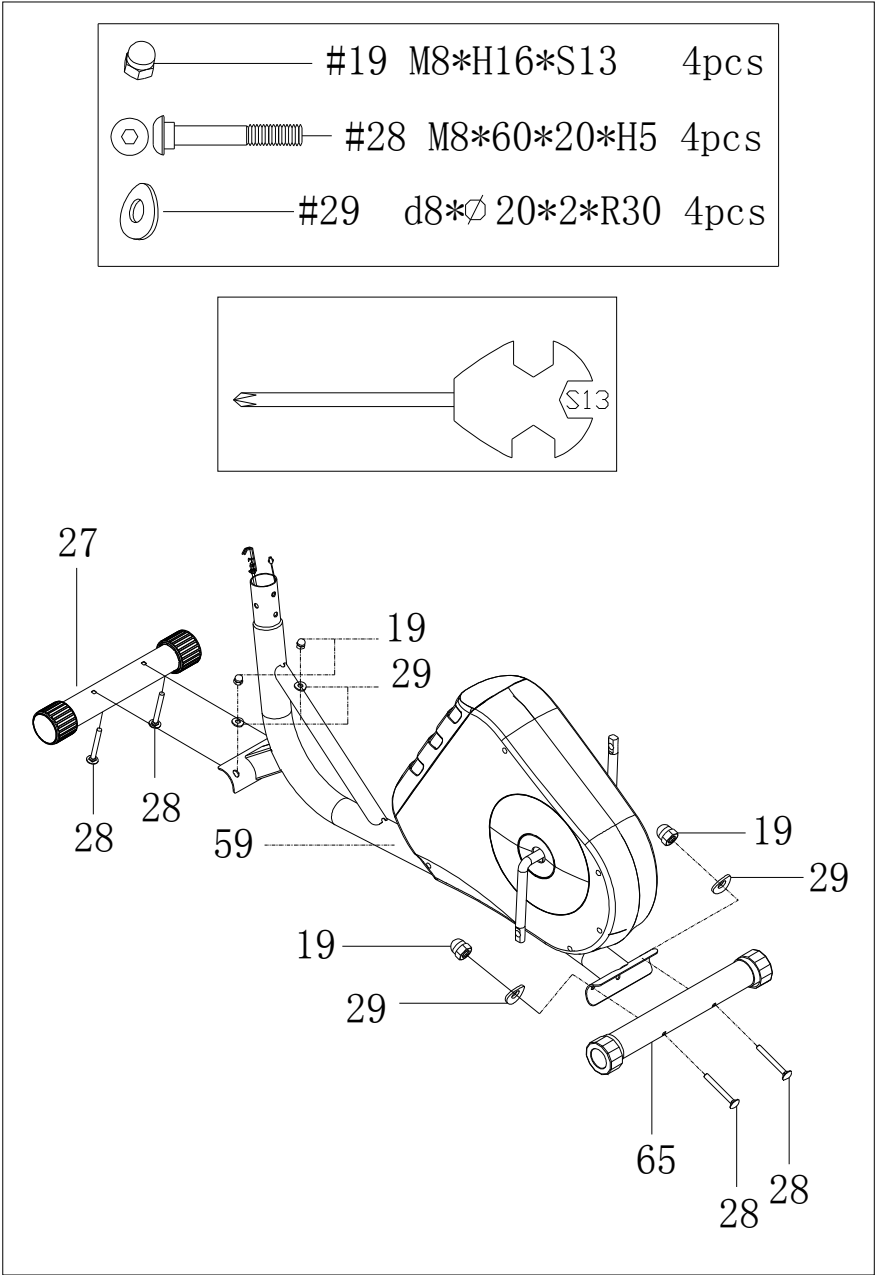
PARTS LIST

No.	Description	Qty.
1	Computer	1
2	Middle handlebar	1
3	Foam grip $\Phi 23*5*445$	2
4	End cap $\Phi 25*16$	2
5	Washer $d6*\phi 12*1$	2
6	Screw ST4*19	2
7	Handle pulse for tube $\Phi 25$	2
8	Screw M8*30*S6	2
9	Handle pulse wire	1
10	Trunk wire 1	1
11	Computer wire	1
12	Foam grip $\Phi 26*5*510$	2
13L/R	Handlebar (L/R)	2
14	End cap $\Phi 28*32*\Phi 50$	2
15	Screw M5*10	2
16	Bushing $\Phi 32*\Phi 25*L83$	2
17	Bolt M8*40*20*S14	2
18	Arc washer $d8*\Phi 20*2*R16$	2
19	Nut M8*H16*S13	6
20	Long spacer $\Phi 32*\Phi 19.2*75.5$	2
21	Alloy wrap 2 $\Phi 32$	4
22	washer $d8*\Phi 32*2$	2
23	Spring washer d8	4
24	Bolt M8*16*S14	2
25L/R	Swing rod (L/R)	1
26	End cap $\Phi 50*\Phi 67*45$	2
27	Front stabilizer	1
28	Bolt M8*60*20*H5	4
29	Arc washer $d8*\Phi 20*2*R30$	8
30	Screw M5*16	1
31	Bolt M8*65*30*S14	2
32	Spacer $\Phi 14*\Phi 8.3*48$	2
33	Alloy wrap 1 $\Phi 32*3*\Phi 28*16*\Phi 14.3$	4
34	Bolt M10*42*20*S17	2
35	U shape seat	2

36	Arc washer d6*Φ20*1.5*R30	1
37	Washer d8*Φ16*1.5	2
38	Nut M8*H7.5*S13	2
39	Wave washer d19*Φ25*0.3	4
40	Clamp cover	1
41	End cap J40*25*15	4
42	Bolt M10*45*20*S14	4
43	Pedal	2
44	Bolt M10*50*13*S17	2
45L/R	Bolt Φ16*89*23*1/2*S8	2
46	Alloy wrapΦ28*4*Φ24*12*Φ16.1	4
47	Rear connector	2
48L/R	Nut 1/2*20*H8*S19	2
49	Spring washer 1/2"	2
50	Grommet	1
51	End cap Φ50*45.5*64.5	2
52	Tension control	1
53	Screw M8*16*S6	4
54	Alloy wrap Φ18*3*Φ14*7*Φ10.1	4
55	Connecting rod	2
56	Washer d10*Φ20*2	8
57	Tension wire	1
58	Trunk wire 2	1
59	Main frame	1
60	End cap S13	6
61	End cap S18	2
62	End cap S16	2
63	Nut M10*H9.5*S17	8
64	Handlebar post	1
65	Rear stabilizer	1
66	Spanner S8	1
67	Spanner S6	1
68	Spanner S13-14-15	1
69	Spanner S17-S19(inner 17)	1
70	Spanner S13-14	1

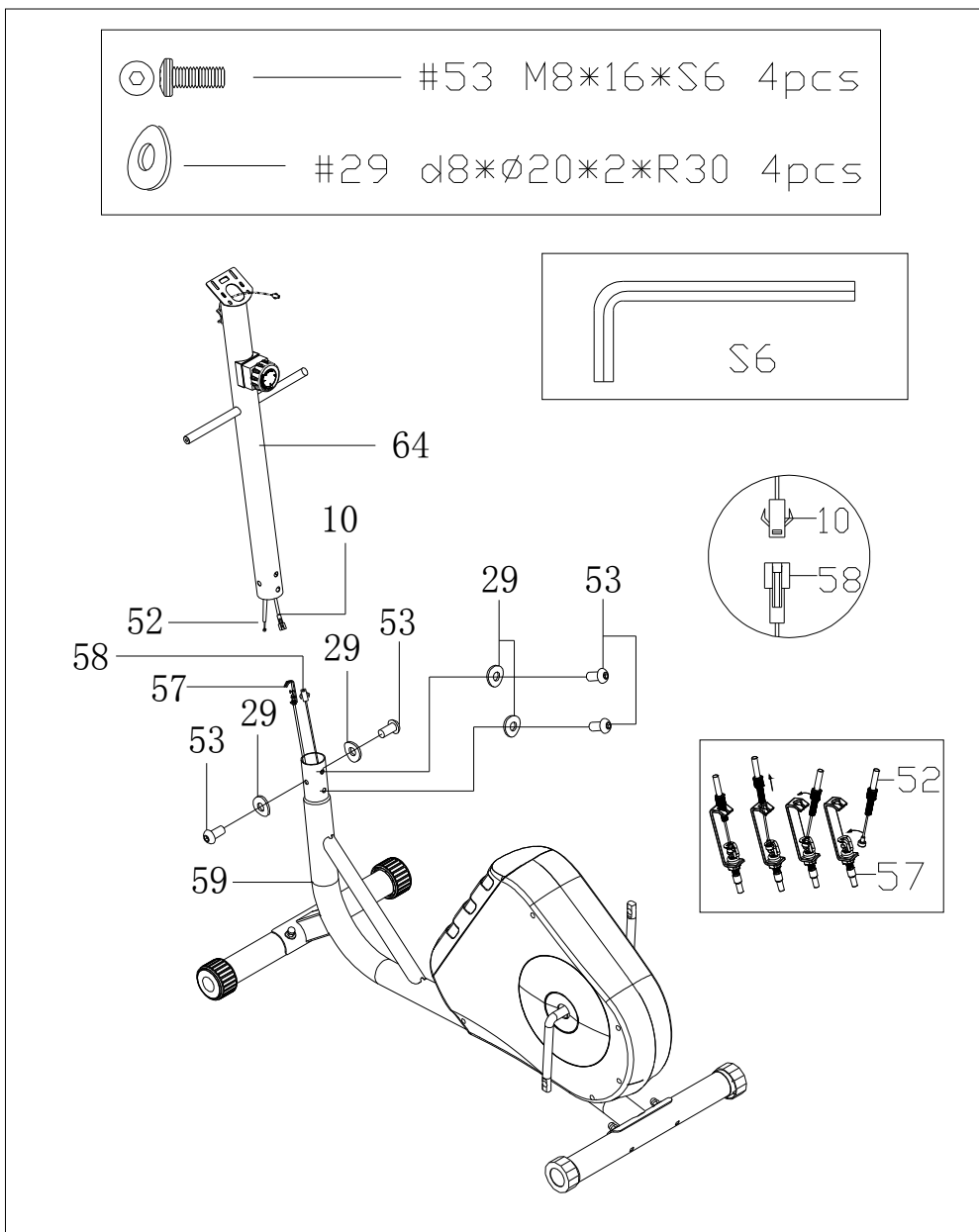
ASSEMBLY

STEP 1:



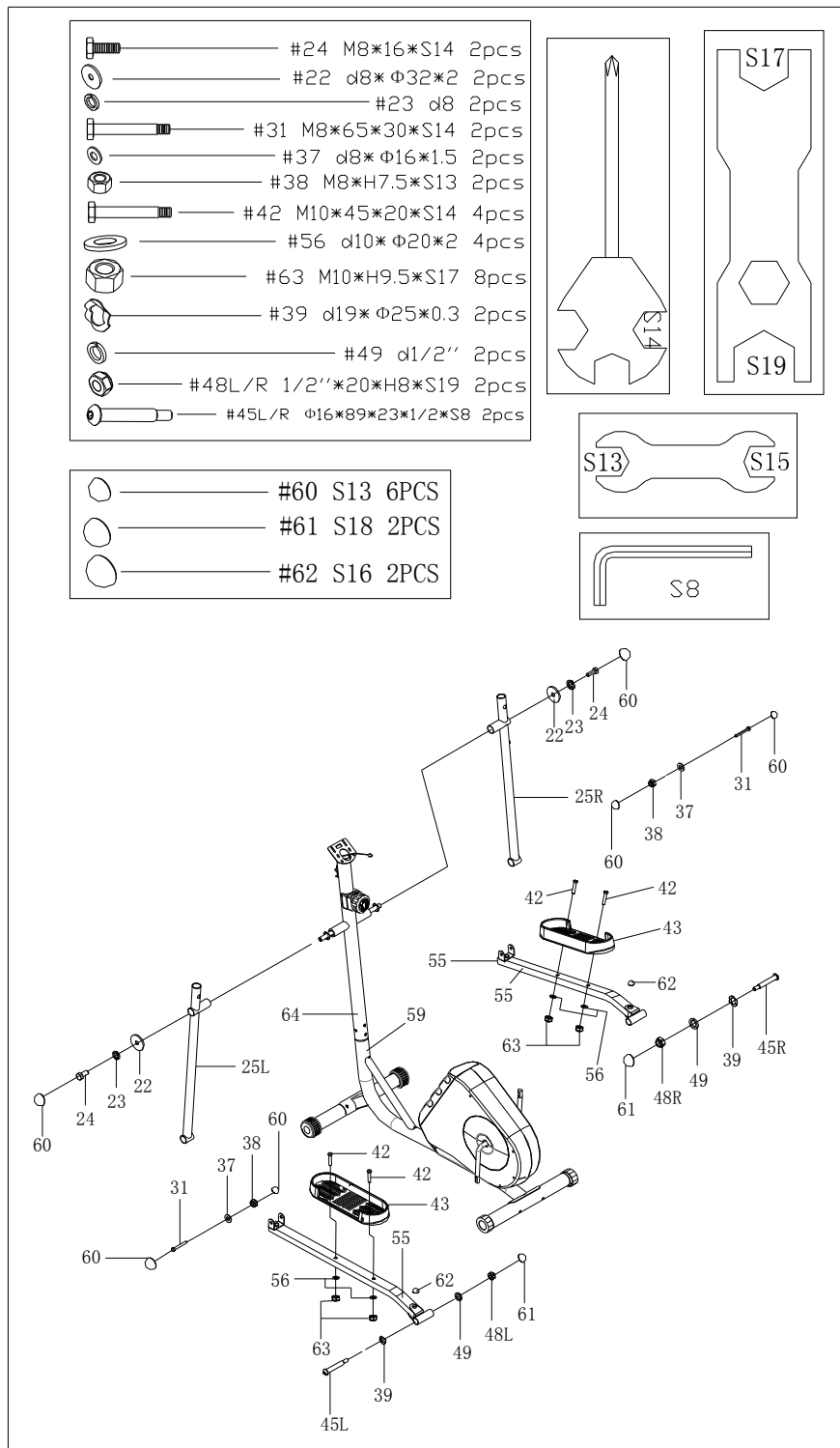
Secure front stabilizer (27) and rear stabilizer (65) to main frame (59) with bolt (28), arc washer (29) and nut (19).

STEP 2:



Connect tension control (52) with tension wire (57); and connect trunk wire 1 (10) with trunk wire 2 (58).
Secure handlebar post (64) to main frame (59) with screw (53) and arc washer (29).

STEP 3:



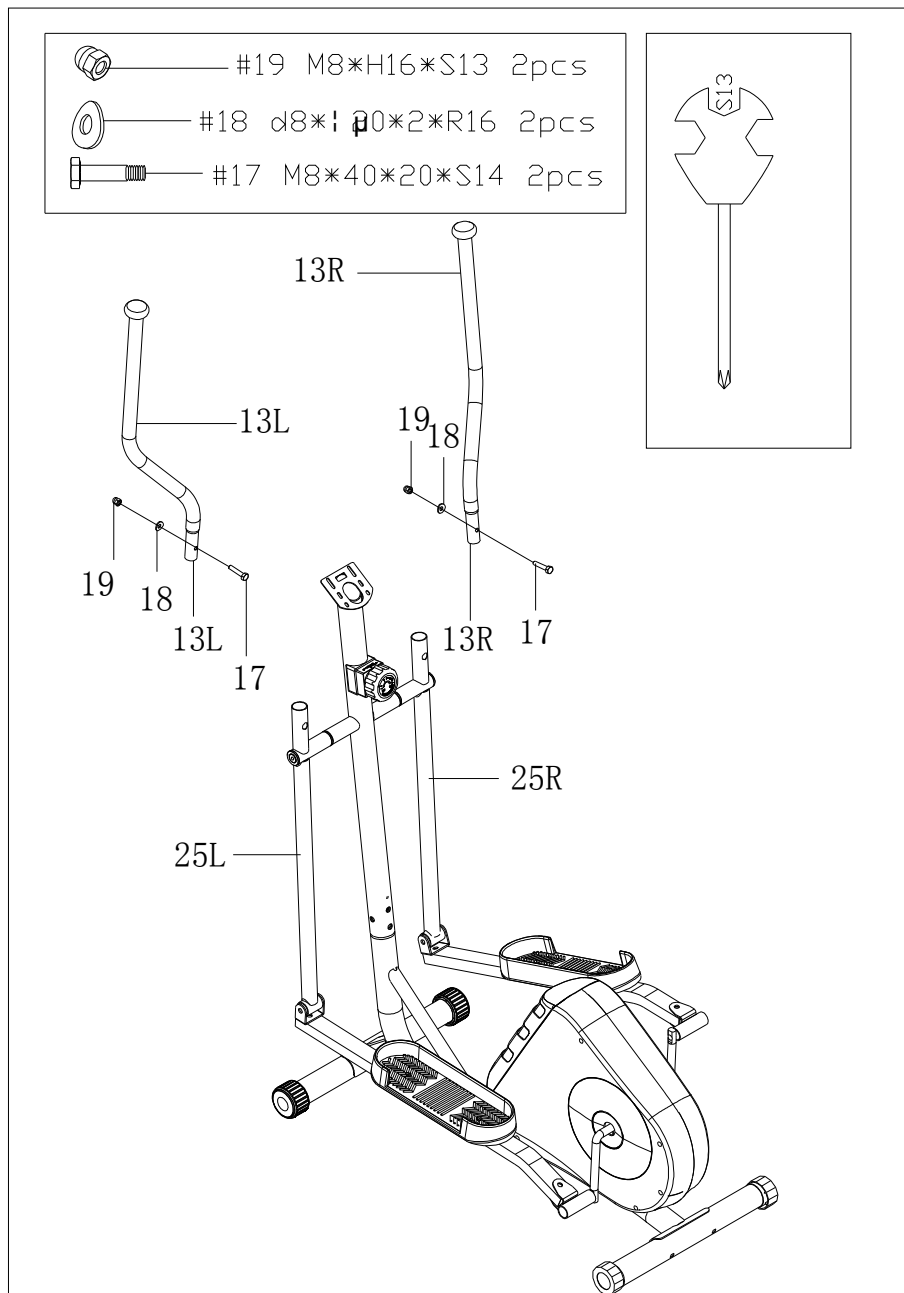
Secure swing rod (25L/R) to handlebar post (64) with bolt (24), spring washer (23) and washer (22); then attach end cap (60).

Secure rear connector (47) to the crank of main frame (59) with bolt (45L/R) and wave washer (39); then secure it with spring washer (49) and nut (48L/R), attach end cap (61) (62);

Secure swing rod (25L/R) with connecting rod (55) with bolt (31), washer (37) and nut (38); then attach end cap (60).

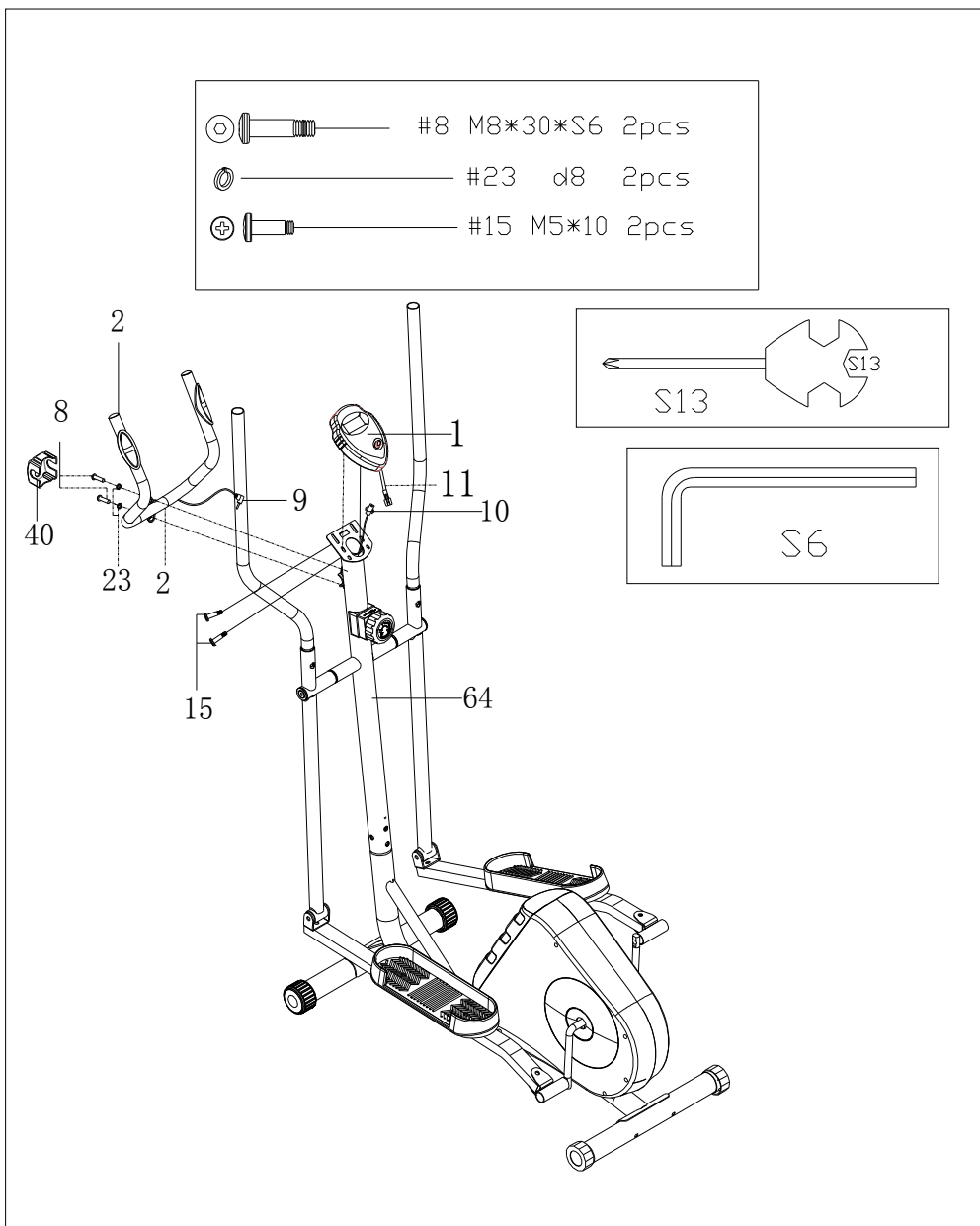
Secure pedal (43) to connecting rod (55) with bolt (42), washer (56) and nut (63).

STEP 4:



Secure handlebar (13L/R) to swing rod (25L/R) with bolt (17), arc washer (18) and nut (19).

STEP 5:



Secure middle handlebar (2) to handlebar post (64) with screw (8) and spring washer (23), then attach clamp cover (40).

Connect trunk wire 1 (10) with computer wire (11); secure computer (1) to the computer holder of handlebar post (64) with screw (15); insert handle pulse wire (9) into the hole on the back of computer (1).

The assembly is finished.

TERMS AND CONDITIONS OF WARRANTY, WARRANTY CLAIMS

General Conditions of Warranty and Definition of Terms

All Warranty Conditions stated hereunder determine Warranty Coverage and Warranty Claim Procedure. Conditions of Warranty and Warranty Claims are governed by Act No. 40/1964 Coll. Civil Code, Act No. 513/1991 Coll., Commercial Code, and Act No. 634/1992 Coll., Consumer Protection Act, as amended, also in cases that are not specified by these Warranty rules.

The seller is SEVEN SPORT s.r.o. with its registered office in Borivojova Street 35/878, Prague 13000, Company Registration Number: 26847264, registered in the Trade Register at Regional Court in Prague, Section C, Insert No. 116888.

According to valid legal regulations it depends whether the Buyer is the End Customer or not.

“The Buyer who is the End Customer” or simply the “End Customer” is the legal entity that does not conclude and execute the Contract in order to run or promote his own trade or business activities.

“The Buyer who is not the End Customer” is a Businessman that buys Goods or uses services for the purpose of using the Goods or services for his own business activities. The Buyer conforms to the General Purchase Agreement and business conditions to the extent specified in the Commercial Code.

These Conditions of Warranty and Warranty Claims are an integral part of every Purchase Agreement made between the Seller and the Buyer. All Warranty Conditions are valid and binding, unless otherwise specified in the Purchase Agreement, in the Amendment to this Contract or in another written agreement.

Warranty Conditions

Warranty Period

The Seller provides the Buyer a 24 months Warranty for Goods Quality, unless otherwise specified in the Certificate of Warranty, Invoice, Bill of Delivery or other documents related to the Goods. The legal warranty period provided to the Consumer is not affected.

By the Warranty for Goods Quality, the Seller guarantees that the delivered Goods shall be, for a certain period of time, suitable for regular or contracted use, and that the Goods shall maintain its regular or contracted features.

The Warranty does not cover defects resulting from:

User’s fault, i.e. product damage caused by unqualified repair work, improper assembly, insufficient insertion of seat post into frame, insufficient tightening of pedals and cranks

Improper maintenance

Mechanical damages

Regular use (e.g. wearing out of rubber and plastic parts, joints etc.)

Unavoidable event, natural disaster

Adjustments made by unqualified person

Improper maintenance, improper placement, damages caused by low or high temperature, water, inappropriate pressure, shocks, intentional changes in design or construction etc.

Warranty Claim Procedure

The Buyer is obliged to check the Goods delivered by the Seller immediately after taking the responsibility for the Goods and its damages, i.e. immediately after its delivery. The Buyer must check the Goods so that he discovers all the defects that can be discovered by such check.

When making a Warranty Claim the Buyer is obliged, on request of the Seller, to prove the purchase and validity of the claim by the Invoice or Bill of Delivery that includes the product’s serial number, or eventually by the documents without the serial number. If the Buyer does not prove the validity of the Warranty Claim by these documents, the Seller has the right to reject the Warranty Claim.

If the Buyer gives notice of a defect that is not covered by the Warranty (e.g. in the case that the Warranty Conditions were not fulfilled or in the case of reporting the defect by mistake etc.), the Seller is eligible to require a compensation for all the costs arising from the repair. The cost shall be calculated according to the valid price list of services and transport costs.

If the Seller finds out (by testing) that the product is not damaged, the Warranty Claim is not accepted. The Seller reserves the right to claim a compensation for costs arising from the false Warranty Claim.

In case the Buyer makes a claim about the Goods that is legally covered by the Warranty provided by the Seller, the Seller shall fix the reported defects by means of repair or by the exchange of the damaged part or product for a new one. Based on the agreement of the Buyer, the Seller has the right to exchange the defected Goods for a fully compatible Goods of the same or better technical characteristics. The Seller is entitled to choose the form of the Warranty Claim Procedures described in this paragraph.

The Seller shall settle the Warranty Claim within 30 days after the delivery of the defective Goods, unless a longer period has been agreed upon. The day when the repaired or exchanged Goods is handed over to the Buyer is considered to be the day of the Warranty Claim settlement. When the Seller is not able to settle the Warranty Claim within the agreed period due to the specific nature of the Goods defect, he and the Buyer shall make an agreement about an alternative solution. In case such agreement is not made, the Seller is obliged to provide the Buyer with a financial compensation in the form of a refund.



SEVEN SPORT, s.r.o.

Borivojova 35/878 130 00 Praha 3, Czech Republic

CRN: 268 47 264, VAT ID: CZ26847264

Orders: +420 556 300 970, objednavky@insportline.cz
Warranty Claims: +420 556 770 190, Mobile: +420 604 853 019, reklamace@insportline.cz
Service: +420 556 770 190, Mobile: +420 604 853 019, servis@insportline.cz
Fax: +420 556 770 192, (Service +420 556 770 191)
Web: www.insportline.cz, www.worker.cz, www.worker-moto.cz



INSPORTLINE, s.r.o.

Bratislavská 36, 911 05 Trenčín, Slovakia

CRN: 36311723, VAT ID: SK2020177082

Orders: +421(0)326 526 701, +421(0)917 649 192, objednavky@insportline.sk
Warranty Claims: +421(0)326 526 701, +421(0)918 408 519, reklamacie@insportline.sk
Fax: +421(0)326 526 705
Web: www.insportline.sk, www.worker.sk, www.worker-moto.sk

Date of Sale:

Stamp and Signature of Seller: