



**USER MANUAL – EN**

**IN 7450 Vibration Massage Belt inSPORTline Rexabelt**



# CONTENTS

- SAFETY INSTRUCTIONS..... 3
- TECHNICAL DESCRIPTION..... 3
- DIAGRAM..... 4
- PARTS LIST ..... 5
- ASSEMBLY INSTRUCTIONS ..... 6
- CORRECT BODY ALIGNMENT..... 8
- OPERATING INSTRUCTIONS ..... 8
- MASSAGE BELTS ..... 10
  - MAINTENANCE AND STORAGE INSTRUCTIONS ..... 10
  - CLEANING..... 11
- ENVIRONMENT PROTECTION ..... 11
- TERMS AND CONDITIONS OF WARRANTY, WARRANTY CLAIMS..... 11

## **SAFETY INSTRUCTIONS**

- Read the manual carefully before first use and keep it for future reference.
- Follow all warnings and instructions including assembly instructions. Use the device only for intended purposes.
- Follow assembly instructions. Inform all users about proper use and safety instructions. Assembly can be done by adult person.
- Keep the device away from kids and pets. Do not leave kids and pets near device unattended- Assembly can be carried out by adult person.
- Consult your physician before use. This is important if you have health issues or are undergoing any healing program affecting heart function, blood pressure or cholesterol.
- Always follow your body signals. If you feel pain or other complications (chest pressure, irregular heartbeat, shortness of breath or nausea), stop exercising immediately. Improper exercise can result in serious health complications or injury.
- Place the device on a flat, clean, and dry surface and keep a safety distance of at least 0.6 m from other objects. You can use a mat to protect the floor.
- Wear appropriate sports clothing, including sports shoes. Do not wear loose clothing.
- Do not use outdoors.
- Before each use, check the product for damage or wear. Regularly check all bolts and nuts. Tighten them if necessary. Never use a damaged or worn product.
- Do not use the product if sharp edges appear.
- Do not use the trainer if it makes unusual noises.
- No adjustable part may prohibit or restrict the user's movement. Only one person can use the product at a time.
- The trainer is not intended for therapeutic purposes.
- Be especially careful not to injure your back while lifting and carrying the device. Use only the recommended procedure and ask another adult for help.
- Do not make unapproved modifications to the product. In case of repair, contact a professional service.

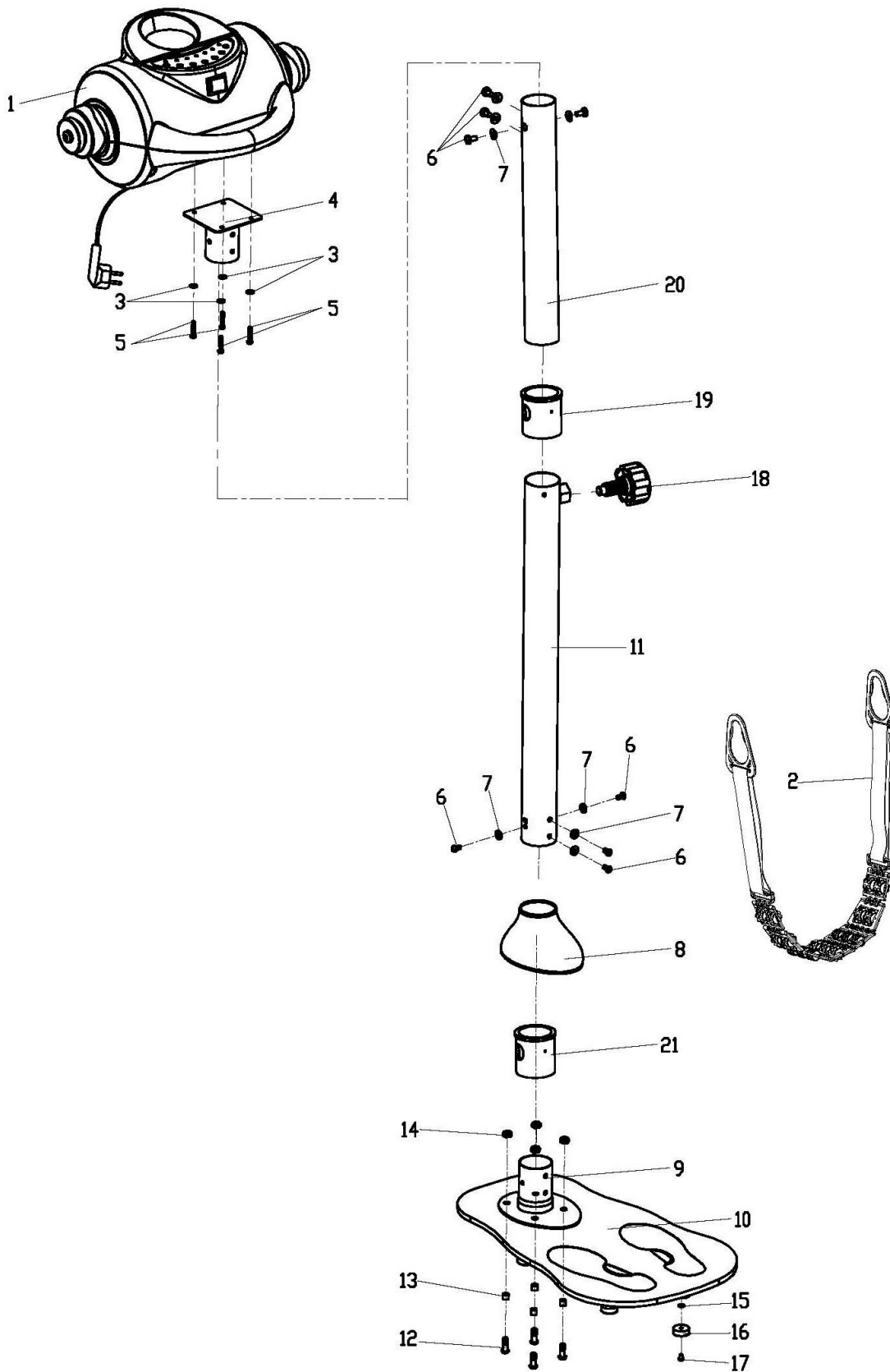
**WARNING: Not following instructions can lead to serious injury.**

## **TECHNICAL DESCRIPTION**

- motor power: 80 W
- 5 motor height adjustment positions
- vibration frequency: 12 - 25 Hz
- 4 types of belts
- 4 levels of vibration adjustment
- glass base
- non-slip base
- base size: 80 x 40 cm (l x w)
- dimensions: 80 cm x 48 cm x 123 cm (l x w x h)
- weight: 18.6 kg
- load capacity: 100 kg

- Category HC (according to EN957 standard) suitable for home use

## DIAGRAM

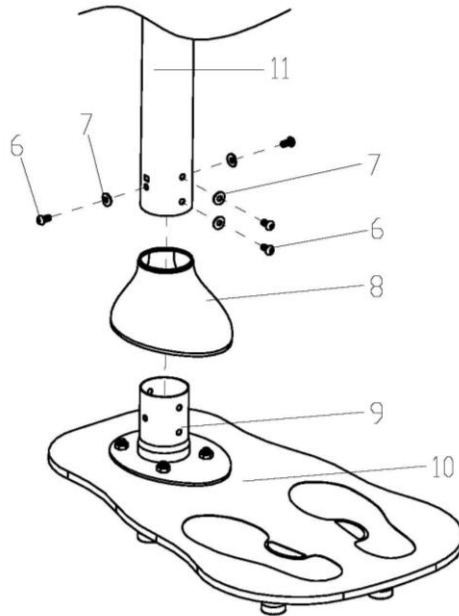


## PARTS LIST

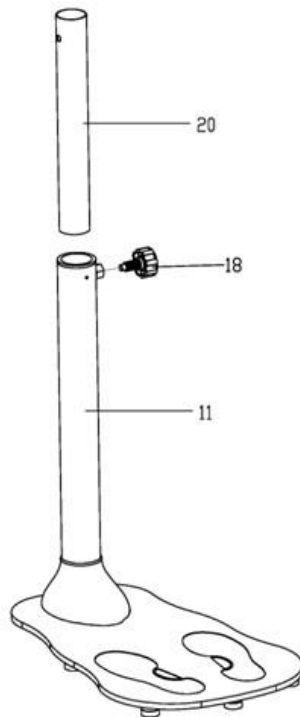
Parts No.	Description	Quantity
1	Vibration motor	1
2	Massage belt	1
3	Flat washer D6×φ16×1.2	4
4	Massage plate	1
5	Cross pan bolt M6×35	4
6	Cross pan bolt M8×16	8
7	Arc washer d8×φ19×1.5 R38	8
8	Cover	1
9	Upright tube plate	1
10	Glass board	1
11	Under upright tube	1
12	Hex bolt M10×30	4
13	Plastic spacer bush	4
14	Nylon nut M10	4
15	Flat washer D6xφ13×1	7
16	Cushion	7
17	Cross pan bolt M6×10	7
18	Pop-pin knob	1
19	Upright bushing 1	1
20	Upper upright tube	1
21	Upright bushing 2	1

## ASSEMBLY INSTRUCTIONS

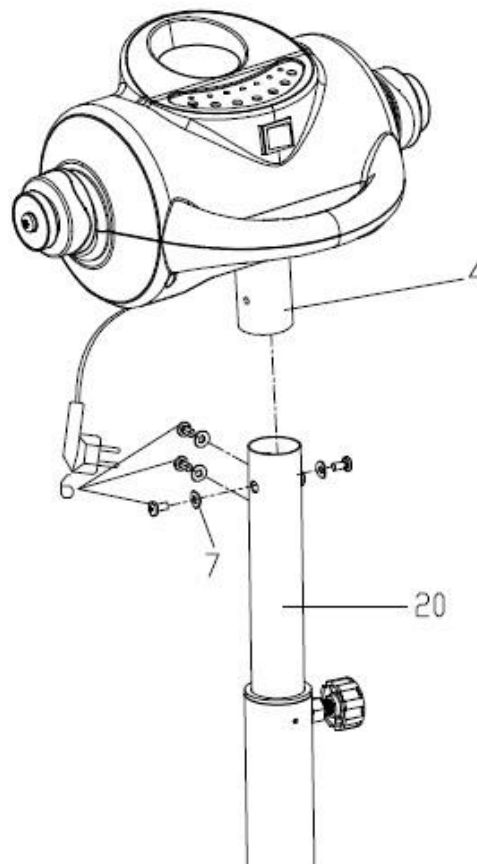
**STEP 1:** Put the cover (8) on the upright tube (11). Then lock the under upright tube (11) to the upright tube plate (9) with hex bolts (6) and arc washers (7), and then put the cover (8) on it.



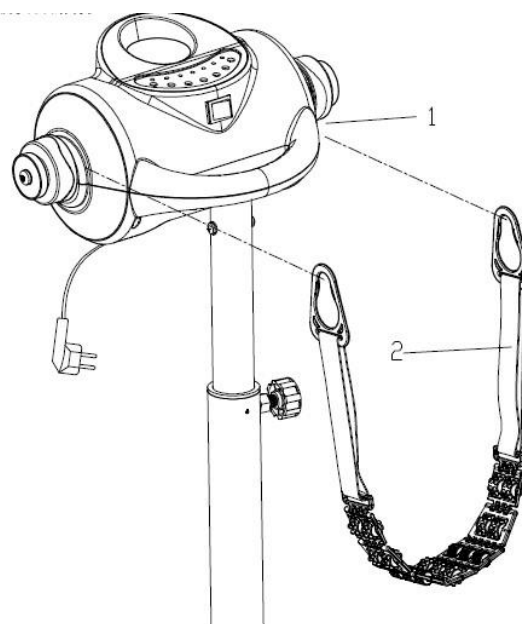
**STEP 2:** Insert the upper upright tube (20) into the under upright tube (11), secured with the pop-pin knob (18) at a proper height as shown.



**STEP 3:** Insert the massage plate (4) which has already installed the motor (1) into the upper upright tube (20), and then attach the massage plate (4) to the upright tube (20) with hex bolts (6) and arc washers (7)



**STEP 4:** Put the belt (2) on the two sides of the motor (1).



This is the final Assembly Instruction. Make sure you have finished all these steps successfully.

**WARNING:**

A. Assembly is ready. Please be noted that the unit only can keep on working for 20 minutes, and then it should be powered off at least for half an hour, i.e. it only can work again after it's powered off for half an hour. Be sure the unit is powered off if it isn't in working condition.

B. It is not allowed to take the motor apart, because the motor is high tension.

**CORRECT BODY ALIGNMENT**



1. Massaging to firm the belly.



2. Massage for back muscle toning and relief of strain.



3. Massage on the waist.



4. Work on the thighs.

**OPERATING INSTRUCTIONS**

1. Plug the adapter into AC 220V/50Hz alternating current power socket.
2. For hanging the massage belt the device is equipped with two vibration heads. The massage belt is strengthened to provide an optimum support of the massaged area. You



can regulate the intensity of the massage by changing the force with which you lean against the belt.

3. Start/stop the machine by pressing the main switch.
4. The product is recommended for people who are 16-70 years old and for everyone who does not suffer from health problems that prohibit the use of this type of massage device. The massage is relaxing and can release muscle tension e.g. after long work in the office or intensive sport activity. It also helps in the treatment of obesity and a regular use reduces the effects of stress on your body.
5. The device is suitable for everyone interested in active and healthy lifestyle.
6. **IMPORTANT:**
  - Do not use the machine if you are in bad health, if you have bone problems or if you are recovering from an operation or serious injury and in case you are a pregnant woman. Children should use the product only under adult supervision. Old people should take care of their safety. Please do not take the massage at least half an hour after a meal.
  - The machine should not be turned on continuously for more than 30 minutes.
  - Especially new users of the equipment may have the feeling of burning or itching of skin – it is normal, the reason is an increased blood circulation in the massaged area.
  - You can increase the positive effects of the massage by maintaining an adequate water intake.

## MASSAGE BELTS



- **Turbo Belt** – unique turbo belt suitable for hip, thigh and glutes massage
- **Anti-Cellulitis Belt** – against cellulitis
- **Double Belt** - suitable for back and chest relaxation
- **Grip Belts** – with grips suitable for relaxation massage while shaping your arms

## MAINTENANCE AND STORAGE INSTRUCTIONS

### STORAGE

1. Do not store the device:
  - Near heat sources and open flames.
  - In places where long-term exposure to direct sunlight may occur.
  - In humid or dusty environments and near flammable substances.
2. Conditions for transport and storage:
  - Use temperature: 0 – 35 °C

- Storage temperature: 5 – 50 °C
  - Humidity: pod 40 – 80%
3. Do not fold or bend the power cord too much, as this may damage it.

## **ROUTINE MAINTENANCE AND PROTECTION OF THE DEVICE**

1. Before performing maintenance, always make sure that the power switch is turned off and the power cord is unplugged.
2. For the first time, you should not leave the device running for too long.
3. After each use, turn off the machine with the power switch and unplug the power cord.
4. Do not use the device in places with high humidity (in the bathroom, near the pool, etc.)
5. Do not use the device in an environment with a high concentration of dust and in places where is a risk of contact with oil, solvents or other hazardous substances or gases.
6. Avoid damaging and scratching the surface of the board - do not place or drop heavy or sharp-edged objects on the board.

## **CLEANING**

Do not use abrasive cleaners, benzene or solvents for cleaning. Do not apply insecticides to the device. Use a soft cloth and a mild detergent to clean the product.

## **ENVIRONMENT PROTECTION**

After the product lifespan expired or if the possible repairing is uneconomic, dispose it according to the local laws and environmentally friendly in the nearest scrapyard.

By proper disposal you will protect the environment and natural sources. Moreover, you can help protect human health. If you are not sure in correct disposing, ask local authorities to avoid law violation or sanctions.

Don't put the batteries among house waste but hand them in to the recycling place.

## **TERMS AND CONDITIONS OF WARRANTY, WARRANTY CLAIMS**

### **General Conditions of Warranty and Definition of Terms**

All Warranty Conditions stated here under determine Warranty Coverage and Warranty Claim Procedure. Conditions of Warranty and Warranty Claims are governed by Act No. 89/2012 Coll. Civil Code, and Act No. 634/1992 Coll., Consumer Protection, as amended, also in cases that are not specified by these Warranty rules.

The seller is SEVEN SPORT s.r.o. with its registered office in Strakonická street 1151/2c, Prague 150 00, Company Registration Number: 26847264, registered in the Trade Register at Regional Court in Prague, Section C, Insert No. 116888.

According to valid legal regulations it depends whether the Buyer is the End Customer or not.

“The Buyer who is the End Customer” or simply the “End Customer” is the legal entity that does not conclude and execute the Contract in order to run or promote his own trade or business activities.

“The Buyer who is not the End Customer” is a Businessman that buys Goods or uses services for the purpose of using the Goods or services for his own business activities. The Buyer conforms to the General Purchase Agreement and business conditions.

These Conditions of Warranty and Warranty Claims are an integral part of every Purchase Agreement made between the Seller and the Buyer. All Warranty Conditions are valid and binding, unless otherwise specified in the Purchase Agreement, in the Amendment to this Contract or in another written agreement.

### **Warranty Conditions**

## Warranty Period

The Seller provides the Buyer a 24 months Warranty for Goods Quality, unless otherwise specified in the Certificate of Warranty, Invoice, Bill of Delivery or other documents related to the Goods. The legal warranty period provided to the Consumer is not affected.

By the Warranty for Goods Quality, the Seller guarantees that the delivered Goods shall be, for a certain period of time, suitable for regular or contracted use, and that the Goods shall maintain its regular or contracted features.

### **The Warranty does not cover defects resulting from (if applicable):**

- User's fault, i.e. product damage caused by unqualified repair work, improper assembly, insufficient insertion of seat post into frame, insufficient tightening of pedals and cranks
- Improper maintenance
- Mechanical damages
- Regular use (e.g. wearing out of rubber and plastic parts, moving mechanisms, joints, wear of brake pads/blocks, chain, tires, cassette/multi wheel etc.)
- Unavoidable event, natural disaster
- Adjustments made by unqualified person
- Improper maintenance, improper placement, damages caused by low or high temperature, water, inappropriate pressure, shocks, intentional changes in design or construction etc.

## **Warranty Claim Procedure**

The Buyer is obliged to check the Goods delivered by the Seller immediately after taking the responsibility for the Goods and its damages, i.e. immediately after its delivery. The Buyer must check the Goods so that he discovers all the defects that can be discovered by such check.

When making a Warranty Claim the Buyer is obliged, on request of the Seller, to prove the purchase and validity of the claim by the Invoice or Bill of Delivery that includes the product's serial number, or eventually by the documents without the serial number. If the Buyer does not prove the validity of the Warranty Claim by these documents, the Seller has the right to reject the Warranty Claim.

If the Buyer gives notice of a defect that is not covered by the Warranty (e.g. in the case that the Warranty Conditions were not fulfilled or in the case of reporting the defect by mistake etc.), the Seller is eligible to require a compensation for all the costs arising from the repair. The cost shall be calculated according to the valid price list of services and transport costs.

If the Seller finds out (by testing) that the product is not damaged, the Warranty Claim is not accepted. The Seller reserves the right to claim a compensation for costs arising from the false Warranty Claim.

In case the Buyer makes a claim about the Goods that is legally covered by the Warranty provided by the Seller, the Seller shall fix the reported defects by means of repair or by the exchange of the damaged part or product for a new one. Based on the agreement of the Buyer, the Seller has the right to exchange the defected Goods for a fully compatible Goods of the same or better technical characteristics. The Seller is entitled to choose the form of the Warranty Claim Procedures described in this paragraph.

The Seller shall settle the Warranty Claim within 30 days after the delivery of the defective Goods, unless a longer period has been agreed upon. The day when the repaired or exchanged Goods is handed over to the Buyer is considered to be the day of the Warranty Claim settlement. When the Seller is not able to settle the Warranty Claim within the agreed period due to the specific nature of the Goods defect, he and the Buyer shall make an agreement about an alternative solution. In case such agreement is not made, the Seller is obliged to provide the Buyer with a financial compensation in the form of a refund.

**CZ**  
**SEVEN SPORT s.r.o.**

Registered Office: Strakonická 1151/2c, Praha 5, 150 00, ČR  
Headquarters: Dělnická 957, Vítkov, 749 01  
Warranty & Service: Čermenská 486, Vítkov 749 01

CRN: 26847264  
VAT ID: CZ26847264

Phone: +420 556 300 970  
E-mail: eshop@insportline.cz  
reklamace@insportline.cz  
servis@insportline.cz

Web: www.inSPORTline.cz

**SK**  
**inSPORTline s.r.o.**

Headquarters, warranty & service center: Električná 6471, Trenčín 911 01, SK

CRN: 36311723  
VAT ID: SK2020177082

Phone: +421(0)326 526 701  
E-mail: objednavky@insportline.sk  
reklamacie@insportline.sk  
servis@insportline.sk

Web: www.inSPORTline.sk