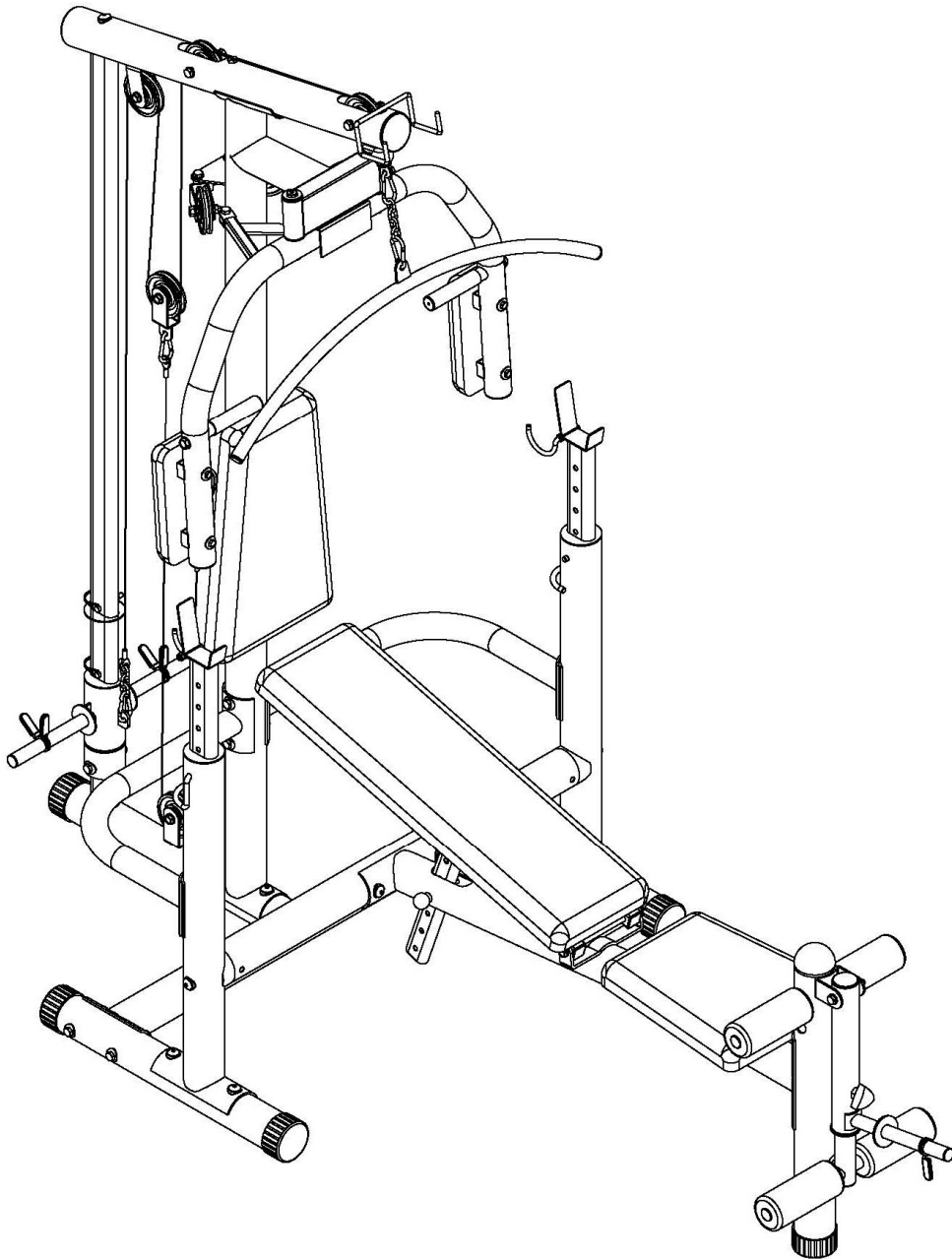
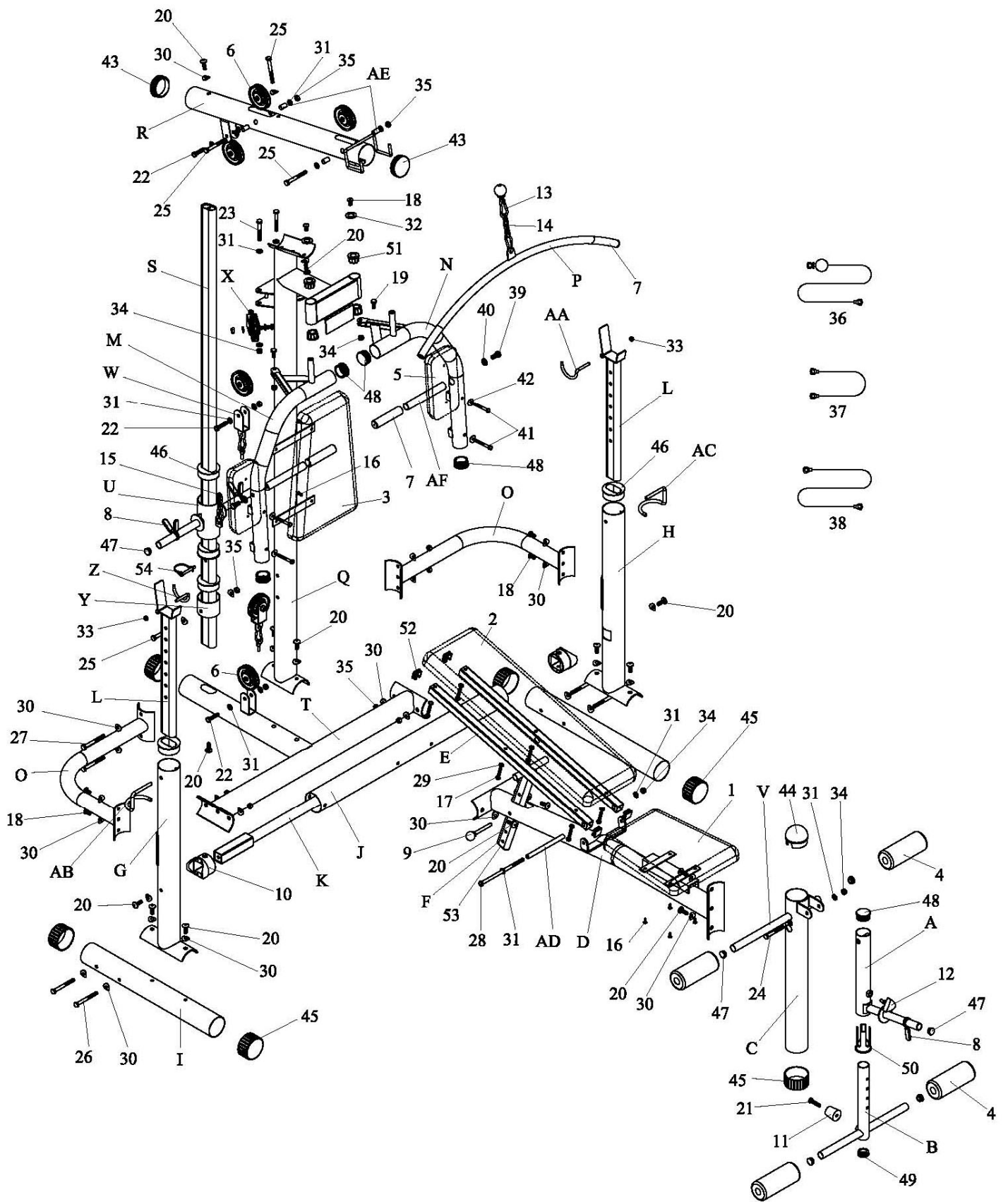


HG2054Z



ASSEMBLY INSTRUCTIONS

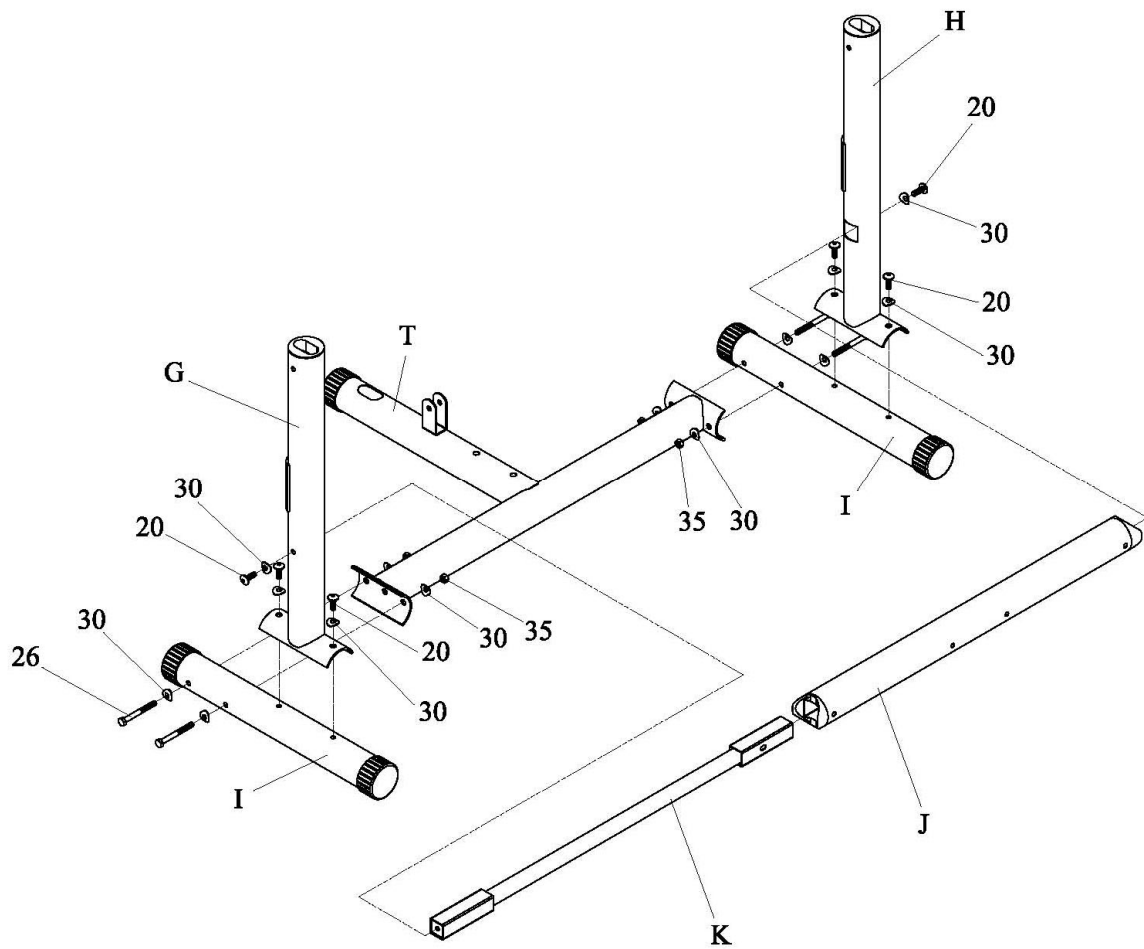


PARTS LIST

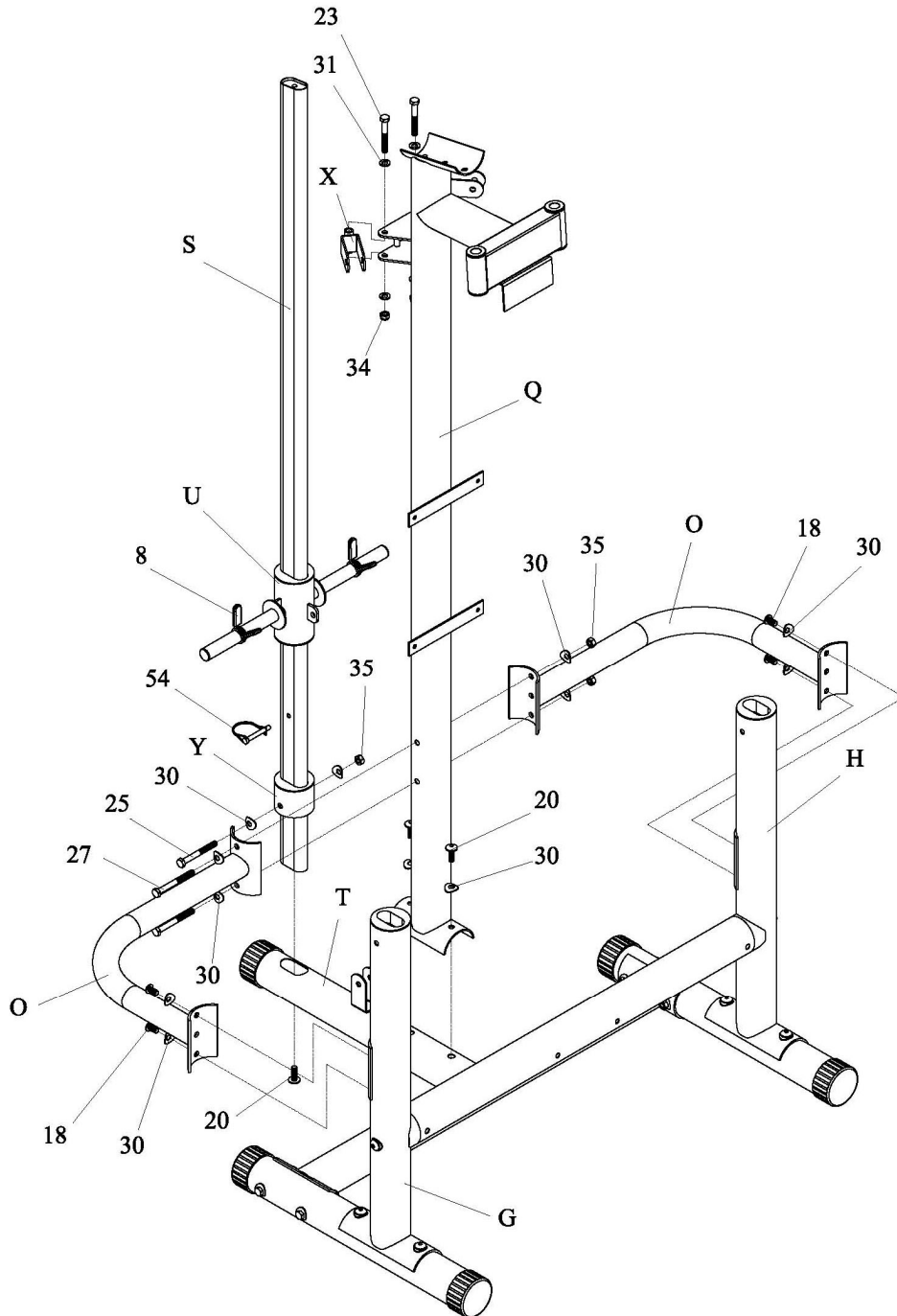
NUMBER	DESCRIPTION	QUANTITY
A	LEG LIFT	1
B	ADJUSTMENT LEG LIFT	1
C	LEG LIFT SUPPORT	1
D	MAIN FRAME	1
E	BACKREST SUPPORT	2
F	ADJUSTABLE BACKREST SUPPORT	1
G	RIGHT VERTICAL SUPPORT	1
H	LEFT VERTICAL SUPPORT	1
I	SIDE STABILIZER	2
J	ROTATIONAL TUBE	1
K	HORIZONTAL SUPPORT	1
L	ADJUSTMENT WEIGHT SUPPORT	2
M	RIGHT BUTTERFLY	1
N	LEFT BUTTERFLY	1
O	JOINT TUBE	2
P	LAT BAR	1
Q	REAR VERTICAL SUPPORT	1
R	UPPER FRAME	1
S	CHROME UPRIGHT	1
T	REAR STABILIZER	1
U	SLEEVE WEIGHT TUBE	1
V	FOAM TUBE	1
W	PULLEY BRACKET	2
X	ROTATIONAL PULLEY BRACKET	2
Y	BLOCK TUBE	1
Z	RIGHT SAFETY HOOK	1
AA	LEFT SAFETY HOOK	1
AB	RIGHT HEIGHT SELECT PIN	1
AC	LEFT HEIGHT SELECT PIN	1
AD	LONG IRON TUBE	1
AE	SHORT IRON TUBE	4
AF	HANDLE BAR	2
1	SEAT PAD	1
2	BACKREST PAD	1
3	BACKREST BROAD PAD	1
4	FOAM ROLLER	4
5	ARMREST PAD	2
6	PULLEY	8
7	HANDLE GRIP	4
8	SPRING CLIP	3
9	PIN	2

10	JOINT CAP	2
11	RUBBER STOPPER	1
12	TRIANGLE KNOB	1
13	HOOK	6
14	LONG CHAIN	1
15	SHORT CHAIN	1
16	BOLT M6*16	8
17	BOLT M8*45	6
18	ALLEN BOLT M10*20	6
19	BOLT M10*30	2
20	ALLEN BOLT M10*30	15
21	CROSS HEAD BOLT M10*40	1
22	BOLT M10*45	6
23	BOLT M10*75	2
24	BOLT M10*80	1
25	BOLT M10*90	4
26	BOLT M10*95	4
27	BOLT M10*100	2
28	BOLT M10*200	1
29	WASHER 8	6
30	R-WASHER 10	32
31	WASHER 10	24
32	BIG WASHER 10	2
33	LOCK NUT M8	2
34	LOCK NUT M10	6
35	NUT M10	15
36	CABLE WITH ONE BALL (UP)	1
37	SHORT CABLE WITH NO BALL (DOWN)	1
38	LONG CABLE WITH NO BALL (MIDDLE)	1
39	BOLT M12*20	2
40	WASHER 12	2
41	BOLT M8*70	4
42	R-WASHER 8	4
43	ROUND END CAP ϕ 76	2
44	BALL HEAD CAP ϕ 76	1
45	ROUND CAP ϕ 76	6
46	BUSHING ϕ 76/60-30	5
47	ROUND END CAP ϕ 25	7
48	ROUND END CAP ϕ 50	5
49	ROUND END CAP ϕ 38	1
50	BUSHING ϕ 50- ϕ 38	1
51	BUSHING ϕ 38- ϕ 19	4
52	SQUARE END CAP 30*30	4
53	ELLPITICAL CAP	1
54	SAFETY PIN	1

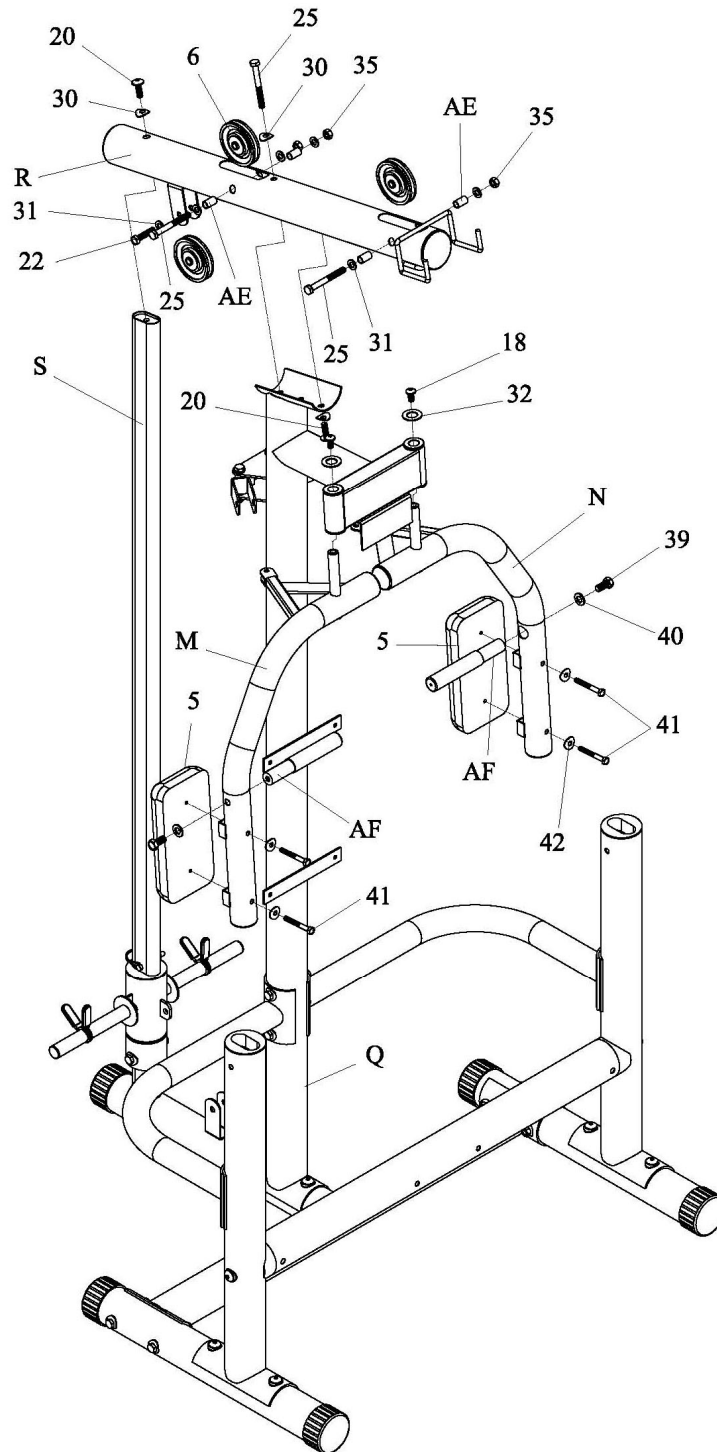
ASSEMBLY INSTRUCTIONS



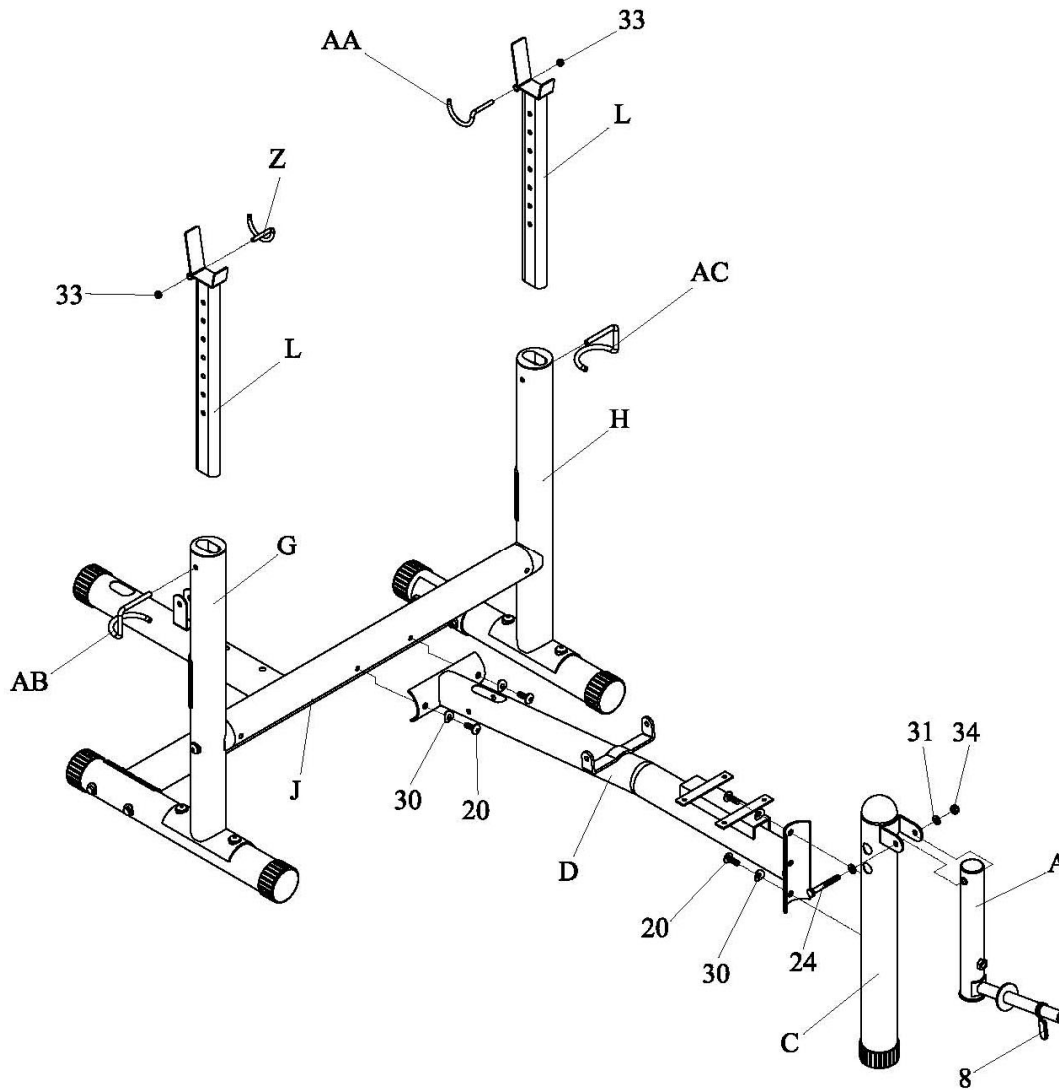
1. Attach rear stabilizer (T) to side stabilizer (I) with bolt M10*95 (26), R-washers (30) and nut (35).
2. Attach right vertical support (G) to side stabilizer (I) with Allen bolt M10*30 (20) and R-washers (30).
3. Insert horizontal support (K) into rotational tube (J). Insert horizontal support (K) into hole on right vertical support (G), secure with Allen bolt M10*30 (20) and R-washers (30).
4. Attach left vertical support (H) to side stabilizer (I) and horizontal support (K) with Allen bolt M10*30 (20) and R-washers (30).



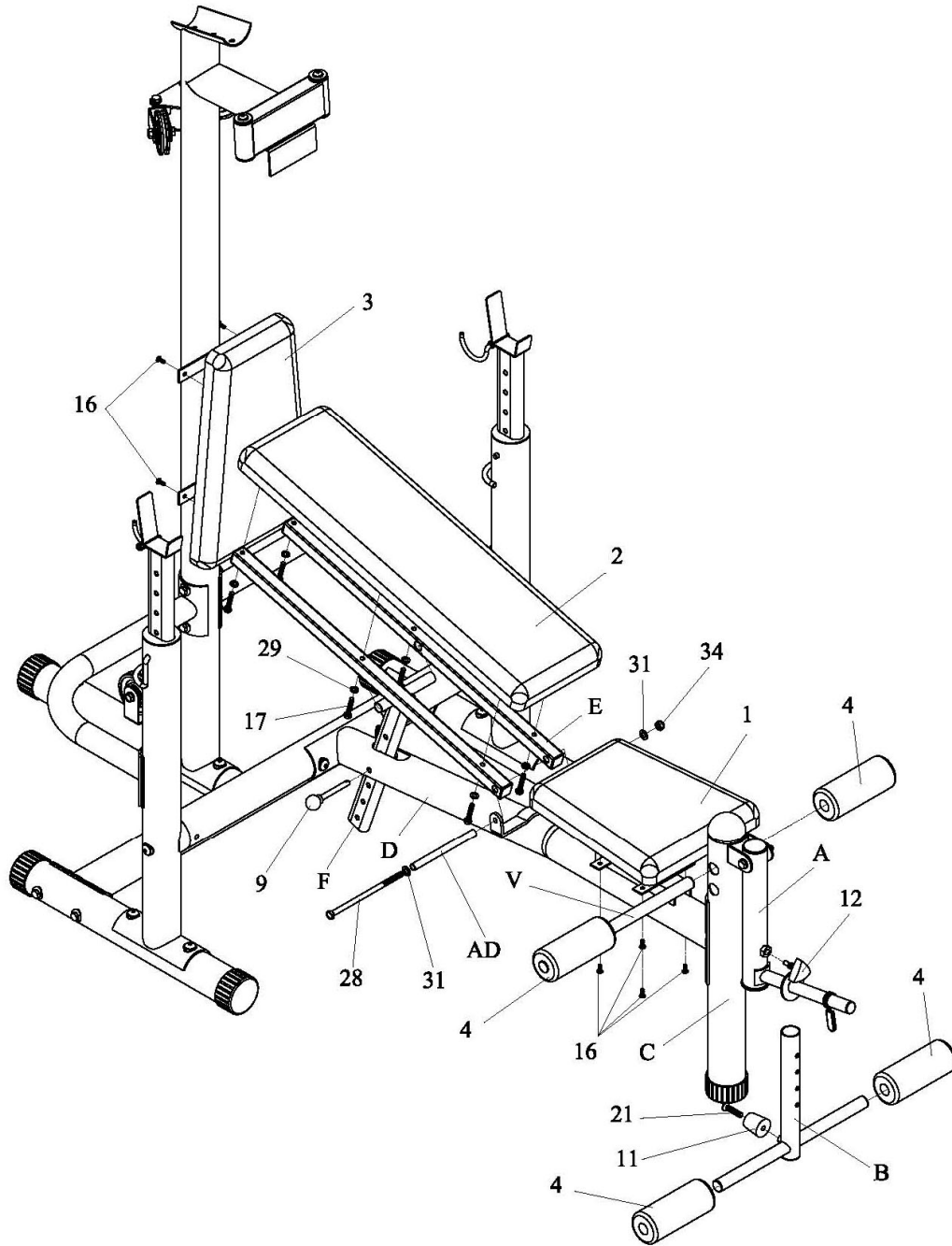
1. Attach chrome upright (S) to rear stabilizer (T) with Allen bolt M10*30 (20).
2. Slide block tube (Y) down chrome upright (S), secure it with bolt M10*90 (25), R-washer (30) and nut (35).
3. Slide sleeve weight tube (U) down chrome upright (S).
4. Attach rear vertical support (Q) to rear stabilizer (T) with Allen bolt M10*30 (20) and R-washers (30).
5. Attach joint tube (O) to rear vertical support (Q), right and left vertical support (G&H) with bolt M10*100 (27), Allen bolt M10*20 (18), R-washer (30) and nut (35).
6. Attach rotational pulley bracket (X) to rear vertical support (Q) with bolt M10*75 (23), washers (31) and lock nut (34).



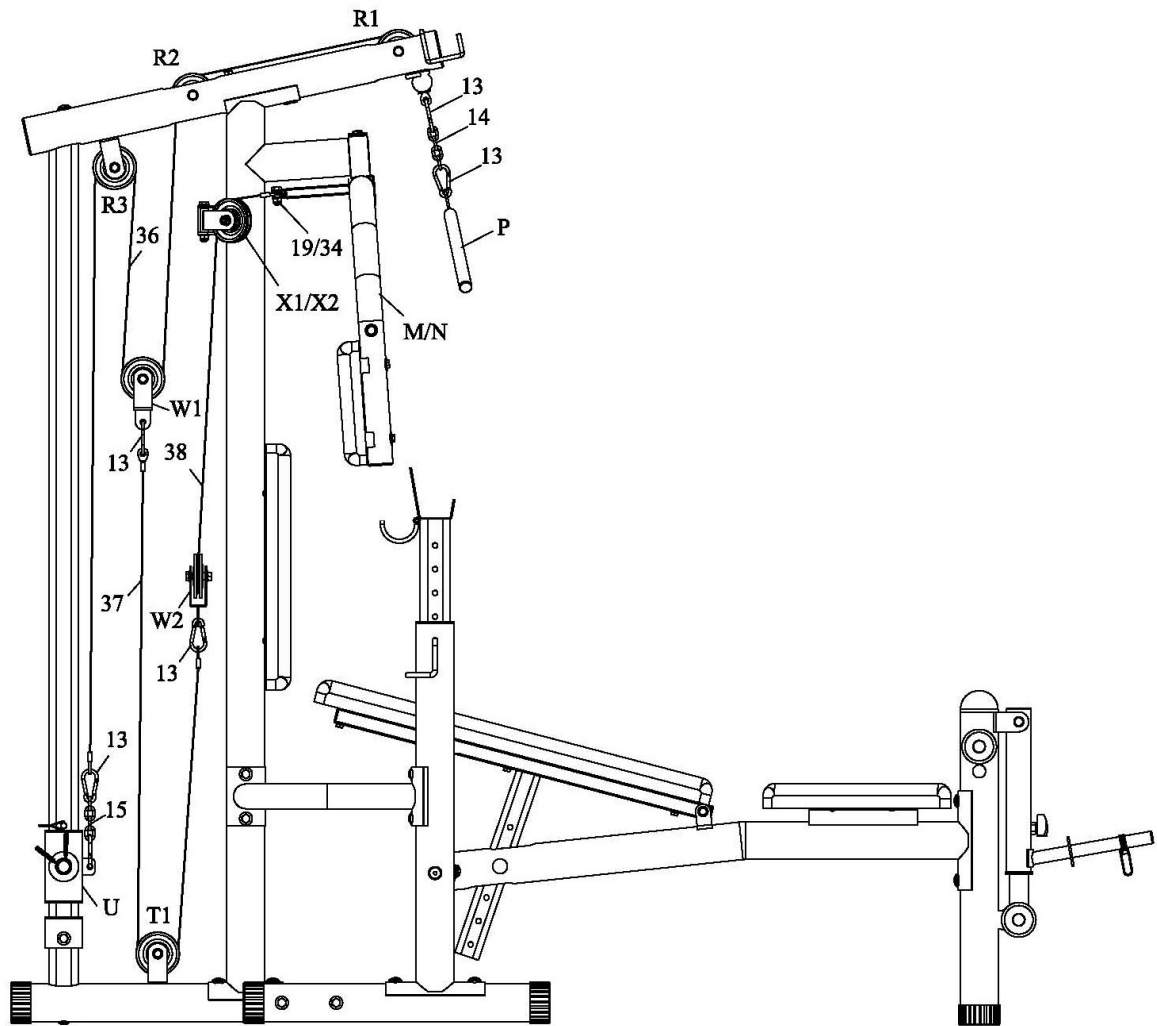
1. Attach upper frame (R) to chrome upright (S) and rear vertical support (Q) with Allen bolt M10*30 (20), bolt M10*90 (25) and R-washer (30). Attach pulley (6) to upper frame (R) with short iron tube (AE), bolt M10*90 (25), washer (31) and nut (35).
2. Attach right butterfly (M) and left butterfly (N) to rear vertical support (Q) with Allen bolt M10*20 (18) and big washer (32).
3. Attach handle bar (AF) to butterfly (M&N) with bolt M12*20 (39) and washer (40).
4. Attach armrest pad (5) to butterfly (M&N) with bolt M8*70 (41) and R-washer (42).



1. Insert adjustment weight support (L) into right vertical support (G) and left vertical support (H) with right height select pin (AB) and left height select pin (AC).
2. Attach right safety hook (Z) and left safety hook (AA) to adjustment weight support (L) with lock nut (33).
3. Attach main frame (D) to rotational tube (J) with Allen bolt M10*30 (20) and R-washer (30).
4. Attach leg lift support (C) to main frame (D) with Allen bolt M10*30 (20) and R-washer (30).
5. Attach leg lift (A) to leg lift support (C) with bolt M10*80 (24), washers (31) and lock nut (34).



1. Attach adjustment leg lift (B) to leg lift (A) with triangle knob (12).
2. Insert foam tube (V) into leg lift support (C), attach foam roller (4) to foam tube (V).
3. Attach adjustable backrest support (F) to backrest support (E), then attach backrest support (E) to main frame (D) with long iron tube (AD), bolt M10*200 (28), washers (31) and lock nut (34). Attach adjustable backrest support (F) to main frame (D) with pin (9).
4. Attach seat pad (1) to main frame (D) with cross head bolt M6*16 (16).
5. Attach backrest pad (2) to backrest support (E) with bolt M8*45 (17) and washer (29).
6. Attach backrest broad pad (3) to rear vertical support (Q) with cross head bolt M6*16 (16).



1. Assembly the long cable with no ball (38)

Attach one end of the cable (38) to right butterfly (M) with bolt M10*20 (19) and lock nut (34). Run the other end of the cable through the pulley on rotational pulley bracket (X1), the pulley W2 on pulley bracket (W), the pulley on the other pulley rotational pulley bracket (X2), then attach the end to left butterfly (N) with bolt M10*20(19) and lock nut (34).

2. Assembly the cable with one ball (36)

Run the end with no ball of the cable (36) through the pulley R1 on upper frame (R), through the pulley R2 on upper frame (R), through the pulley W1 on pulley bracket (W), through the pulley R3 on upper frame (R), attach the cable to the sleeve weight tube (U) with hooks (13) and short chain (15).

3. Assembly the short cable with no ball (37)

Attach one end of the cable (37) to pulley bracket (W1) with hook (13). Run the other end of the cable through the pulley T1 on rear stabilizer (T), Hook the eyelet end of the cable to the pulley bracket (W2) with hook (13).

4. Attach the lat bar (P) to the end with ball of the cable (36) with hooks (13) and long chain (14).