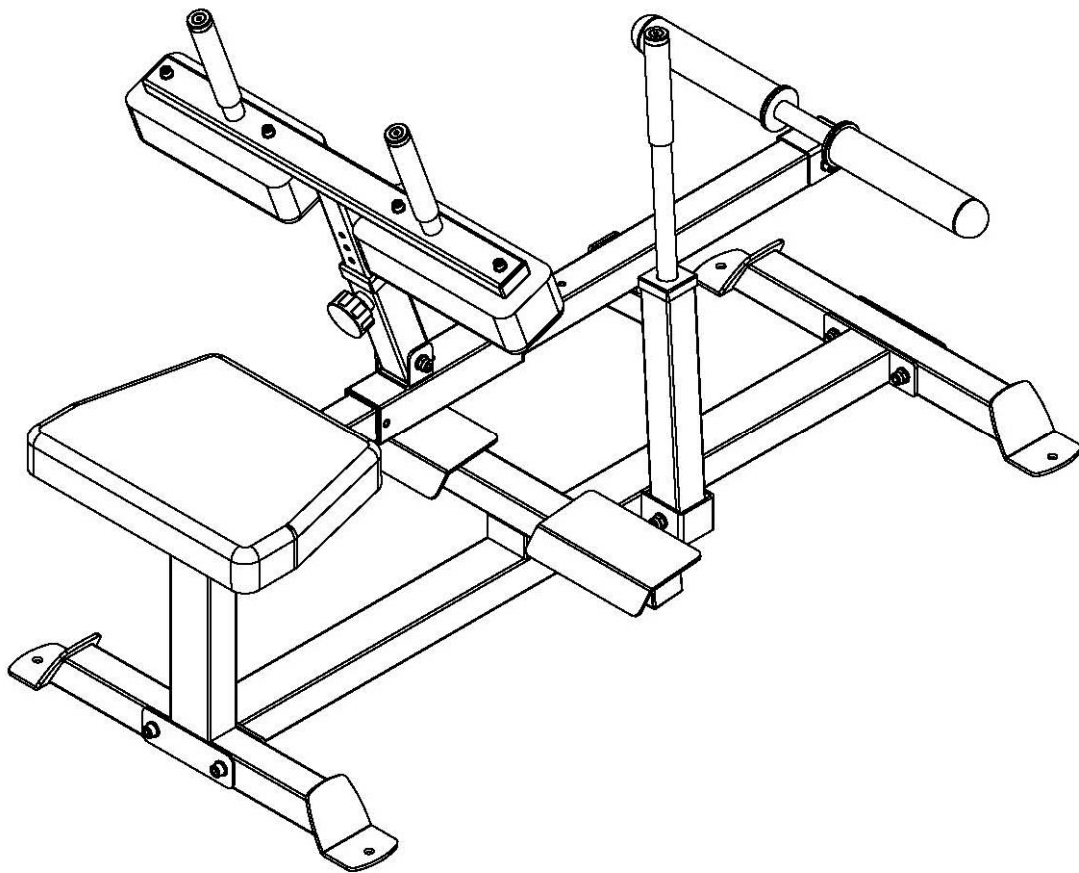


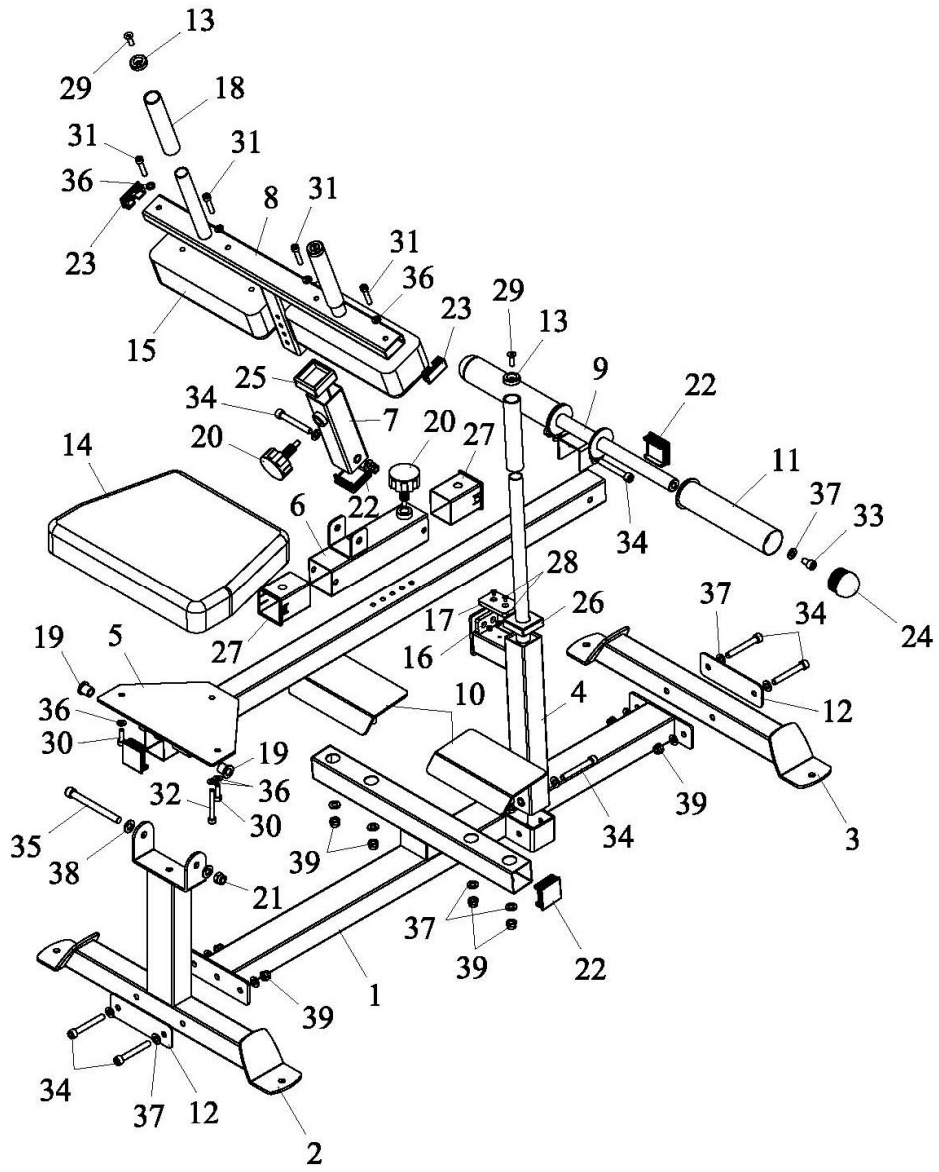
SEATED CALF RAISES BENCH

AX1015



ASSEMBLY INSTRUCTIONS

EXPLODED DIAGRAM

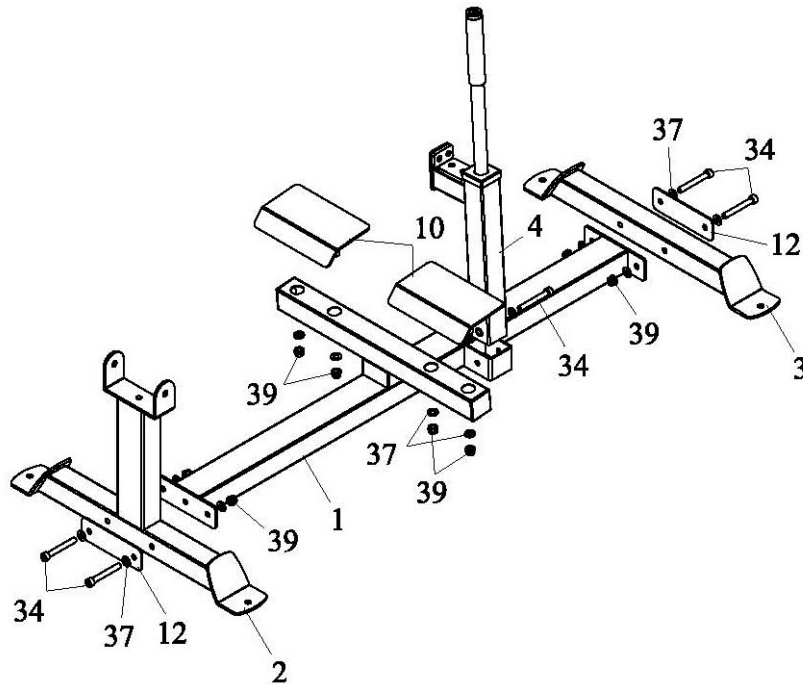


PART LIST

NUMBER	DESCRIPTION	Q'TY
1	MAIN BASE	1
2	REAR BASE	1
3	FRONT BASE	1
4	FRAME HOLDER	1
5	MAIN FRAME	1
6	ADJUSTABLE FRAME	1
7	UPPER HOLDER	1
8	CUSHION SUPPORT	1
9	PLATE HOLDER	1
10	FOOT PLATE	2
11	PLATE ADAPTER	2
12	REINFORCEMENT PLATE	2
13	SHEATHING	3
14	SEAT CUSHION	1
15	AGAINST CUSHION	2
16	SMALL NYLON PLATE	1
17	NYLON PLATE	1
18	HANDLE FOAM	3
19	BUSHING	2
20	FAST PIN	2

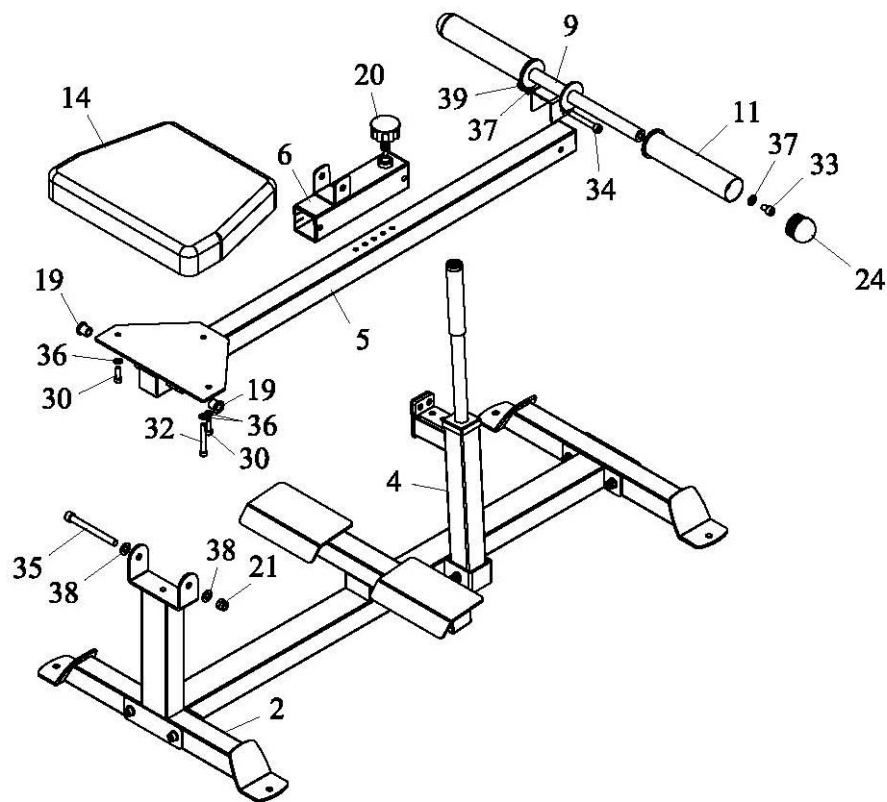
NUMBER	DESCRIPTION	Q'TY
21	M12 LOCK NUT	1
22	SQUARE PLUG-50	5
23	RECTANGULAR PLUG	2
24	ROUND PLUG	2
25	SQUARE BUSHING-50*45	1
26	SQUARE BUSHING-50* ϕ 32	1
27	SQUARE BUSHING-60*50	2
28	M5*10 SOCKET SCREW	4
29	M8*25 SOCKET SCREW	3
30	M8*25 SOCKET CAP SCREW	2
31	M8*45 SOCKET CAP SCREW	4
32	M8*75 SOCKET CAP SCREW	1
33	M10*20 SOCKET CAP SCREW	2
34	M10*75 SOCKET CAP SCREW	7
35	M12*160 SOCKET CAP SCREW	1
36	8MM WASHER	7
37	10MM WASHER	20
38	12MM WASHER	2
39	M10 LOCK NUT	11

STEP 01



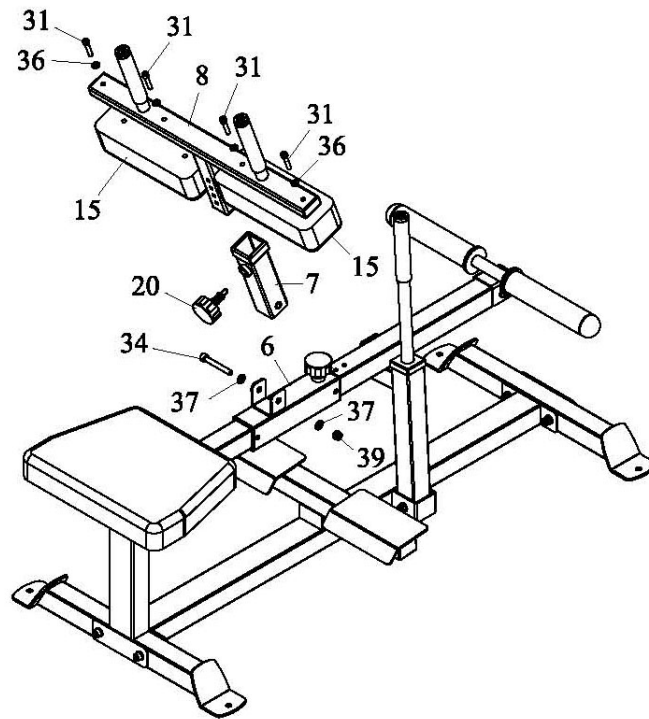
1. Attach FRONT BASE (3) and REINFORCEMENT PLATE (12) to MAIN BASE (1) using two SCREWS M10*75 (34), four WASHERS 10MM (37) and two LOCK NUTS M10 (39).
2. Attach REAR BASE (2) and REINFORCEMENT PLATE (12) to MAIN BASE (1) using two SCREWS M10*75 (34), four WASHERS 10MM (37) and two LOCK NUTS M10 (39).
3. Attach FRAME HOLDER (4) to bracket on MAIN FRAME (1) using SCREW M10*75 (34), two WASHERS 10MM (37) and LOCK NUT M10 (39).
4. Insert screws on FOOT PLATE (10) into hole of MAIN BASE (1), secure with four WASHERS 10MM (37) and four LOCK NUTS M10 (39).

STEP 02



1. Put MAIN FRAME (5) on FRAME HOLDER (4). Insert BUSHING (19) into tube on MAIN FRAME (5) and attach MAIN FRAME (5) to REAR BASE (2) using SCREW M12*160 (35), two WASHERS 12MM (38) and LOCK NUT M12 (21).
2. Slide ADJUSTABLE FRAME (6) onto MAIN FRAME (5), secure with FAST PIN (20).
3. Slide PLATE ADAPTER (11) onto PLATE HOLDER (9), secure with two SCREWS M10*20 (33) and two WASHERS 10MM (37). Attach ROUND PLUG (24) to PLATE ADAPTER (11).
4. Attach PLATE HOLDER (9) to MAIN FRAME (5) using SCREW M10*75 (34), two WASHERS 10MM (37) and LOCK NUT M10 (39).
5. Attach SEAT CUSHION (14) to MAIN FRAME (5) using SCREW M8*75 (32), two SCREWS M8*25 (30) and three WASHERS 8MM (36).

STEP 03



1. Attach AGAINST CUSHIONS (15) to CUSHION SUPPORT (8) using four SCREWS M8*45 (31) and four WASHERS 8MM (36).
2. Attach UPPER HOLDER (7) to ADJUSTABLE FRAME (6) using SCREW M10*75 (34), two WASHERS 10MM (37) and LOCK NUT M10 (39).
3. Insert CUSHION SUPPORT (8) into port of UPPER HOLDER (7) and secure with FAST PIN (20).