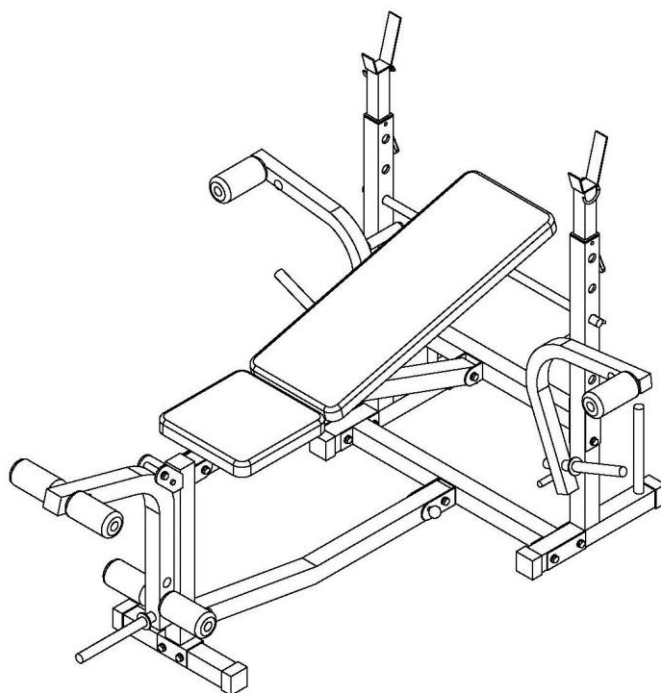




USER MANUAL – EN

IN 564 Workout Bench inSPORTline Adjust



CONTENTS

SAFETY PRECAUTIONS.....	3
PARTS LIST	4
ASSEMBLY INSTRUCTIONS	5
FOLDING INSTRUCTIONS.....	6
TERMS AND CONDITIONS OF WARRANTY, WARRANTY CLAIMS	Chyba! Záložka není definována.

Thank you for purchasing this device. Prior to assemble it, check that all parts are complete and faultless. If there is some damaged or missing part, contact the service. This product is intended only for home use. Don't use it for commercial purposes.

SAFETY PRECAUTIONS

- This product is intended only for home use. Never use it for commercial purposes and never exceed any limit.
- Exercise reasonably to avoid health complications.
- Consult your physician prior to start any workout. It is especially necessary if you have some health problem.
- Producer has no responsibility for damages occurring because of improper use or maintenance.
- Entrust assembly, service and maintenance only to a professional service.
- Max. load capacity: 150 kg
- Only for home use.
- Don't use it in places with lack of air.
- Protect it from extreme temperatures, water and humidity.
- Read the manual prior to first use and keep it for future reference.
- Place it only on a flat, clean and solid surface and keep safety clearance. The machine must be stable.
- Keep safety clearance of at least 2 m around this device.
- Avoid extreme workout or uncontrolled movements.
- All levers and adjusters must be properly secured not obstructing user moving.
- Regularly check all bolts, nuts and other components. Never use damaged or worn device. Damaged parts must be replaced immediately. Contact service.
- Regularly check all bolts and nuts. They must be properly tightened. Re-tighten, if necessary.
- Keep it away from children and pets.
- It is not a toy.
- Retain the manual for future use.
- Max. load:
 - Lifting bar: 100 kg
 - Butterfly: 35 kg
 - Kick-off: 45 kg

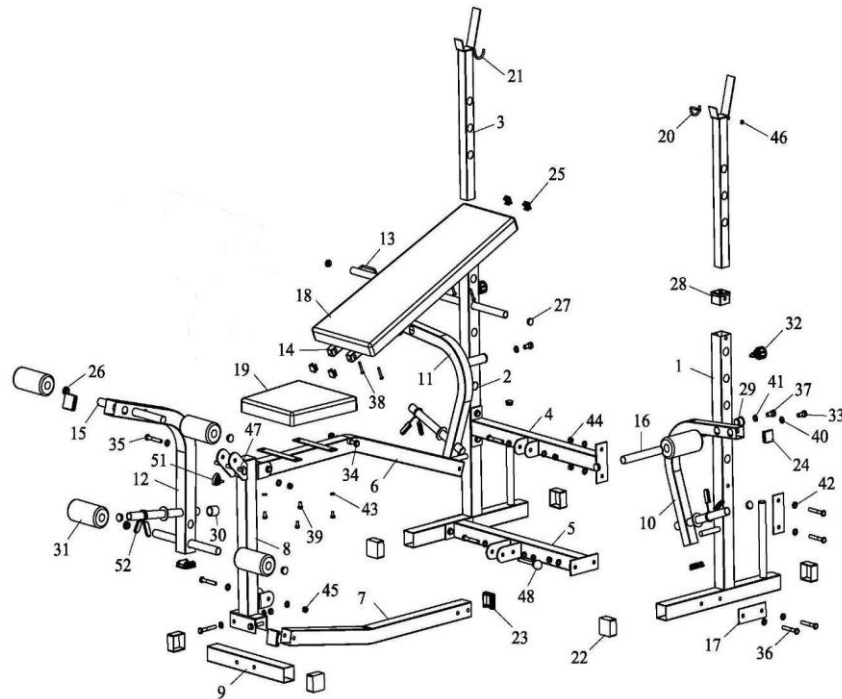
WARNING:

- While sending it back, send it only in original or similar package that can protect this product from damage.
- Consult your physician prior to start using. It is especially necessary if you are older than 35 years or have health problems.
- Check that no part is missing. Package material dispose only after complete assembly.
- Intended only for adult persons. For higher safety during lifting and workout, adult assistance recommended.

PARTS LIST

NO.	DESCRIPTION	QTY
1	LEFT UPRIGHT FRAME	1
2	RIGHT UPRIGHT FRAME	1
3	ADJUSTABLE BARBELL SUPPORT	2
4	BACK UP HORIZONTAL SUPPORT	1
5	BACK DOWN HORIZONTAL SUPPORT	1
6	MAIN FRAME	1
7	DOWN JOINT TUBE	1
8	FRONT SUPPORT	1
9	FRONT DOWN TUBE	1
10	LEFT BUTTERFLY ARM	1
11	RIGHT BUTTERFLY ARM	1
12	LEG EXTENSION BEAM	1
13	ADJUSTABLE BACK REST SUPPORT	1
14	BACK REST BEAM	2
15	LEG EXTENSION FOAM TUBE	2
16	BUTTERFLY ARM FOAM TUBE	2
17	METAL JOINT PLATE	4
18	BACK REST CUSHION	1
19	SEAT CUSHION	1
20	LEFT SAFETY LOCK	1
21	RIGHT SAFETY LOCK	1
22	SQUARE FEET END CAP 50×50	6
23	SQUARE END CAP 50×50	6
24	SQUARE END CAP 38×38	4
25	SQUARE END CAP 25×25	4
26	PLASTIC ROUND END CAP φ25	13
27	PLASTIC ROUND END CAP φ22	2
28	SQUARE PLASTIC BUSH 50×38	3
29	ROUND PLASTIC BUSH φ28×φ22	4
30	LEG LIFT BUFFER	1
31	FOAM ROLLER φ23×φ70×145	6
32	FAST PIN M16	2
33	HEX HEAD BOLT M12×20	2
34	HEX HEAD BOLT M10×140	1
35	HEX HEAD BOLT M10×75	1
36	HEX HEAD BOLT M10×75	14
37	HEX HEAD BOLT M10×25	2
38	HALF ROUND HEAD SCREW M6×40	4
39	HEX HEAD BOLT M6×16	4
40	WASHER 12	2
41	BIG WASHER 10	2
42	WASHER 10	32
43	WASHER 6	4
44	NUT M10	10
45	LOCK NUT M10	6
46	LOCK NUT M6	2
47	PIN φ8×75	1
48	SPHERAL HEAD PIN φ10×75	1
51	TRIANGULAR SCREW	1
52	SPRING CLIP	3

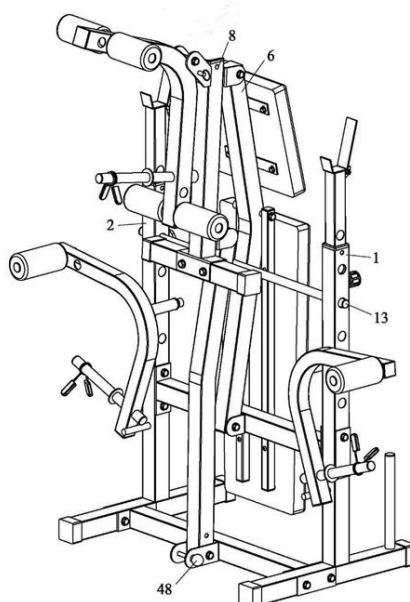
ASSEMBLY INSTRUCTIONS



- Make sure the Metal Joint Plates (17) are mounted on the side of the Upright Frames (1&2) and the Upright Frames are facing the same direction. Then securely fasten each Upright Frame to the Back Up Horizontal Support (4) and Back Down Horizontal Support (5) use the Bolts M10*75 (36), Washers (42) and Nuts (44) as shown.
- Fasten the Down Joint Tube (7) to Back Down Horizontal Support (5) use the Bolts M10*75 (36), Washers (42), Lock Nut (45) and Spherical Head Pin (48) as shown.
- Securely fasten the Front Support (8) to Front Down Tube (9) use the Bolts M10*75 (36), Washers (42) and Nuts (44) as shown. Fasten the Down Joint Tube (7) to Front Support (8) use the Bolt M10*75 (36), Washers (42) and Lock Nut (45) as shown.
- Fasten the Main Frame (6) to the Back Up Horizontal Support (4) and Front Support (8) use the Bolts M10*75 (36), Washers (42) and Lock Nuts (45) as shown.
- Insert the Adjustable Barbell Support (3) to Upright Frames (1&2), then fasten with Adjustable Pin M16 (32).
- Insert the Adjustable Back Rest Support (13) through both vertical Uprights (1&2).
- Attach the Seat Cushion (19) to the Main Frame (6) with Bolts M6*16 (39) and Washers (43).
- Securely fasten the Leg Extension Beam (12) to Front Support (8) using the Bolt M10*75 (35), Washer (42) and Lock Nut (45).
- Insert Leg Extension Foam Tube (15) into the appropriate position (depending on the user size) on the Leg Extension Beam (12) and push a Foam Roller (31) onto each end of the tube.
- Attach the two Back Rest beam (14) to the Back-Rest Cushion (18) with Half Round Head Screw M6*40 (38).
- Attach the Back-Rest beam (14) to the Main Frame (6) with Bolt M10*140 (34), Washers (42) and Lock Nut M10 (45).
- Fasten each Butterfly Arm (10&11) to each of the uprights use the bolts M10*25 (37) and Big Washers (41).
- Insert the Butterfly Arm Foam Tube (16) through each butterfly arm and fasten it with the Bolts M12*20 (33) and Washers (40), then push a Foam Roller (31) onto each.

FOLDING INSTRUCTIONS

To fold your weight bench for storage, first fetch out the Spherical Head Pin (48) and the Adjustable Back Rest Support (13), be sure to hold the unit bench unit in an upright position, then insert the Adjustable Back Rest Support (13) through the holes in the Upright frames (1&2) and the interspace between the Front Support (8) and the Main Frame (6).



TERMS AND CONDITIONS OF WARRANTY, WARRANTY CLAIMS

General Conditions of Warranty and Definition of Terms

All Warranty Conditions stated here under determine Warranty Coverage and Warranty Claim Procedure. Conditions of Warranty and Warranty Claims are governed by Act No. 89/2012 Coll. Civil Code, and Act No. 634/1992 Coll., Consumer Protection, as amended, also in cases that are not specified by these Warranty rules.

The seller is SEVEN SPORT s.r.o. with its registered office in Strakonická street 1151/2c, Prague 150 00, Company Registration Number: 26847264, registered in the Trade Register at Regional Court in Prague, Section C, Insert No. 116888.

According to valid legal regulations it depends whether the Buyer is the End Customer or not.

“The Buyer who is the End Customer” or simply the “End Customer” is the legal entity that does not conclude and execute the Contract in order to run or promote his own trade or business activities.

“The Buyer who is not the End Customer” is a Businessman that buys Goods or uses services for the purpose of using the Goods or services for his own business activities. The Buyer conforms to the General Purchase Agreement and business conditions.

These Conditions of Warranty and Warranty Claims are an integral part of every Purchase Agreement made between the Seller and the Buyer. All Warranty Conditions are valid and binding, unless otherwise specified in the Purchase Agreement, in the Amendment to this Contract or in another written agreement.

Warranty Conditions

Warranty Period

The Seller provides the Buyer a 24 months Warranty for Goods Quality, unless otherwise specified in the Certificate of Warranty, Invoice, Bill of Delivery or other documents related to the Goods. The legal warranty period provided to the Consumer is not affected.

By the Warranty for Goods Quality, the Seller guarantees that the delivered Goods shall be, for a certain period of time, suitable for regular or contracted use, and that the Goods shall maintain its regular or contracted features.

The Warranty does not cover defects resulting from (if applicable):

- User's fault, i.e. product damage caused by unqualified repair work, improper assembly, insufficient insertion of seat post into frame, insufficient tightening of pedals and cranks
- Improper maintenance
- Mechanical damages
- Regular use (e.g. wearing out of rubber and plastic parts, moving mechanisms, joints, wear of brake pads/blocks, chain, tires, cassette/multi wheel etc.)
- Unavoidable event, natural disaster
- Adjustments made by unqualified person
- Improper maintenance, improper placement, damages caused by low or high temperature, water, inappropriate pressure, shocks, intentional changes in design or construction etc.

Warranty Claim Procedure

The Buyer is obliged to check the Goods delivered by the Seller immediately after taking the responsibility for the Goods and its damages, i.e. immediately after its delivery. The Buyer must check the Goods so that he discovers all the defects that can be discovered by such check.

When making a Warranty Claim the Buyer is obliged, on request of the Seller, to prove the purchase and validity of the claim by the Invoice or Bill of Delivery that includes the product's serial number, or eventually by the documents without the serial number. If the Buyer does not prove the validity of the Warranty Claim by these documents, the Seller has the right to reject the Warranty Claim.

If the Buyer gives notice of a defect that is not covered by the Warranty (e.g. in the case that the Warranty Conditions were not fulfilled or in the case of reporting the defect by mistake etc.), the Seller is eligible to require a compensation for all the costs arising from the repair. The cost shall be calculated according to the valid price list of services and transport costs.

If the Seller finds out (by testing) that the product is not damaged, the Warranty Claim is not accepted. The Seller reserves the right to claim a compensation for costs arising from the false Warranty Claim.

In case the Buyer makes a claim about the Goods that is legally covered by the Warranty provided by the Seller, the Seller shall fix the reported defects by means of repair or by the exchange of the damaged part or product for a new one. Based on the agreement of the Buyer, the Seller has the right to exchange the defected Goods for a fully compatible Goods of the same or better technical characteristics. The Seller is entitled to choose the form of the Warranty Claim Procedures described in this paragraph.

The Seller shall settle the Warranty Claim within 30 days after the delivery of the defective Goods, unless a longer period has been agreed upon. The day when the repaired or exchanged Goods is handed over to the Buyer is considered to be the day of the Warranty Claim settlement. When the Seller is not able to settle the Warranty Claim within the agreed period due to the specific nature of the Goods defect, he and the Buyer shall make an agreement about an alternative solution. In case such agreement is not made, the Seller is obliged to provide the Buyer with a financial compensation in the form of a refund.

**CZ
SEVEN SPORT s.r.o.**

Registered Office: Strakonická 1151/2c, Praha 5, 150 00, ČR
Headquarters: Dělnická 957, Vítkov, 749 01
Warranty & Service: Čermenská 486, Vítkov 749 01

CRN: 26847264
VAT ID: CZ26847264

Phone: +420 556 300 970
E-mail: eshop@insportline.cz

reklamace@insportline.cz
servis@insportline.cz

Web: www.inSPORTline.cz

SK
inSPORTline s.r.o.

Headquarters, warranty & service center: Električná 6471, Trenčín 911 01, SK

CRN: 36311723

VAT ID: SK2020177082

Phone: +421(0)326 526 701

E-mail: objednavky@insportline.sk
reklamacie@insportline.sk
servis@insportline.sk

Web: www.inSPORTline.sk