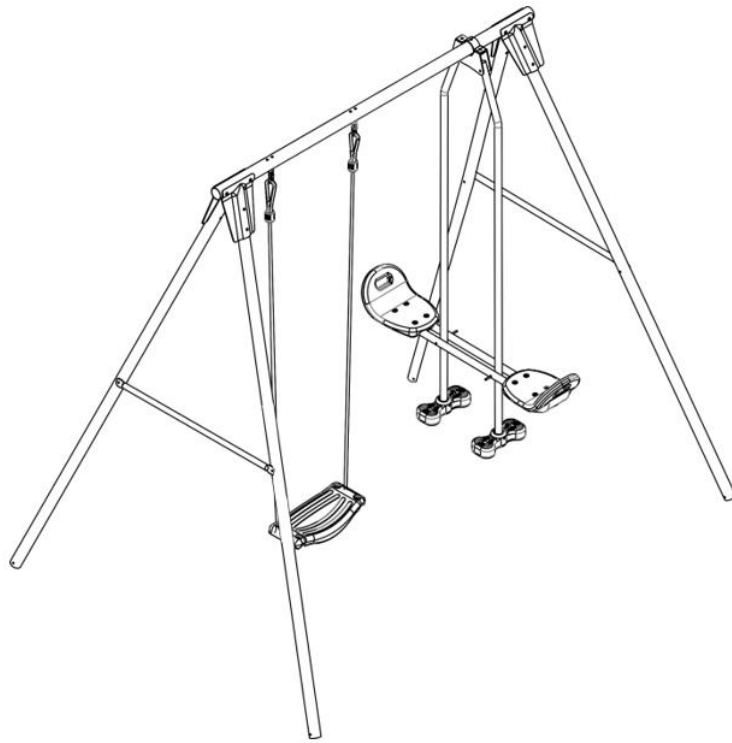




USER MANUAL – EN
IN 3664 Children's Garden Swing



CONTENTS

INTRODUCTION..... 3
SAFETY PRECAUTIONS..... 3
PACKAGE LIST..... 4
ASSEMBLY STEPS 5
MAINTENANCE 8
TERMS AND CONDITIONS OF WARRANTY, WARRANTY CLAIMS..... 8

INTRODUCTION

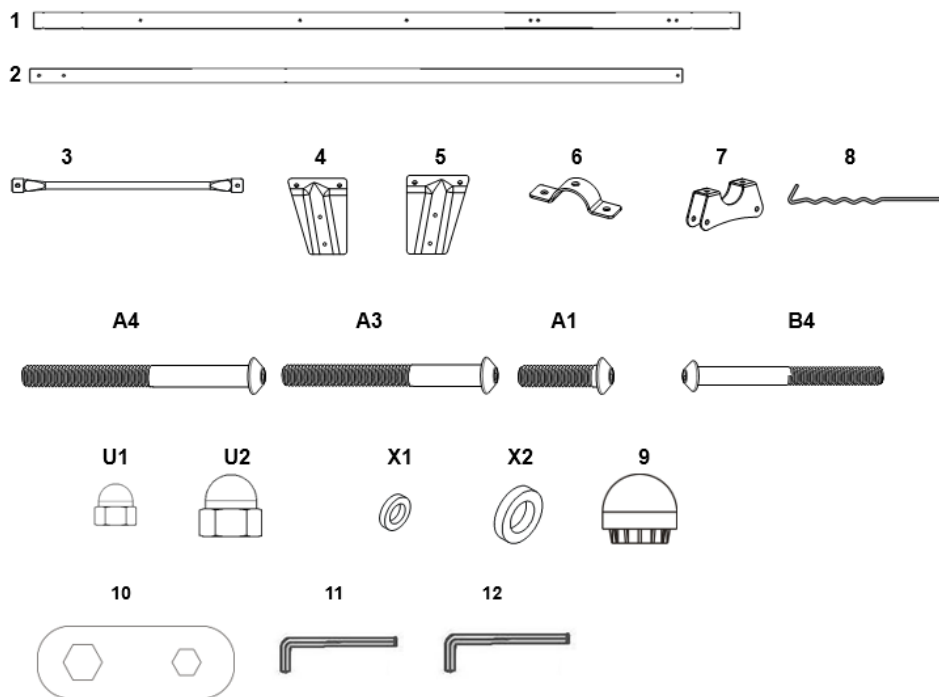
Thank you for purchasing this product. First check that no part is missing or damaged. If some part is missing, contact the producer.

SAFETY PRECAUTIONS

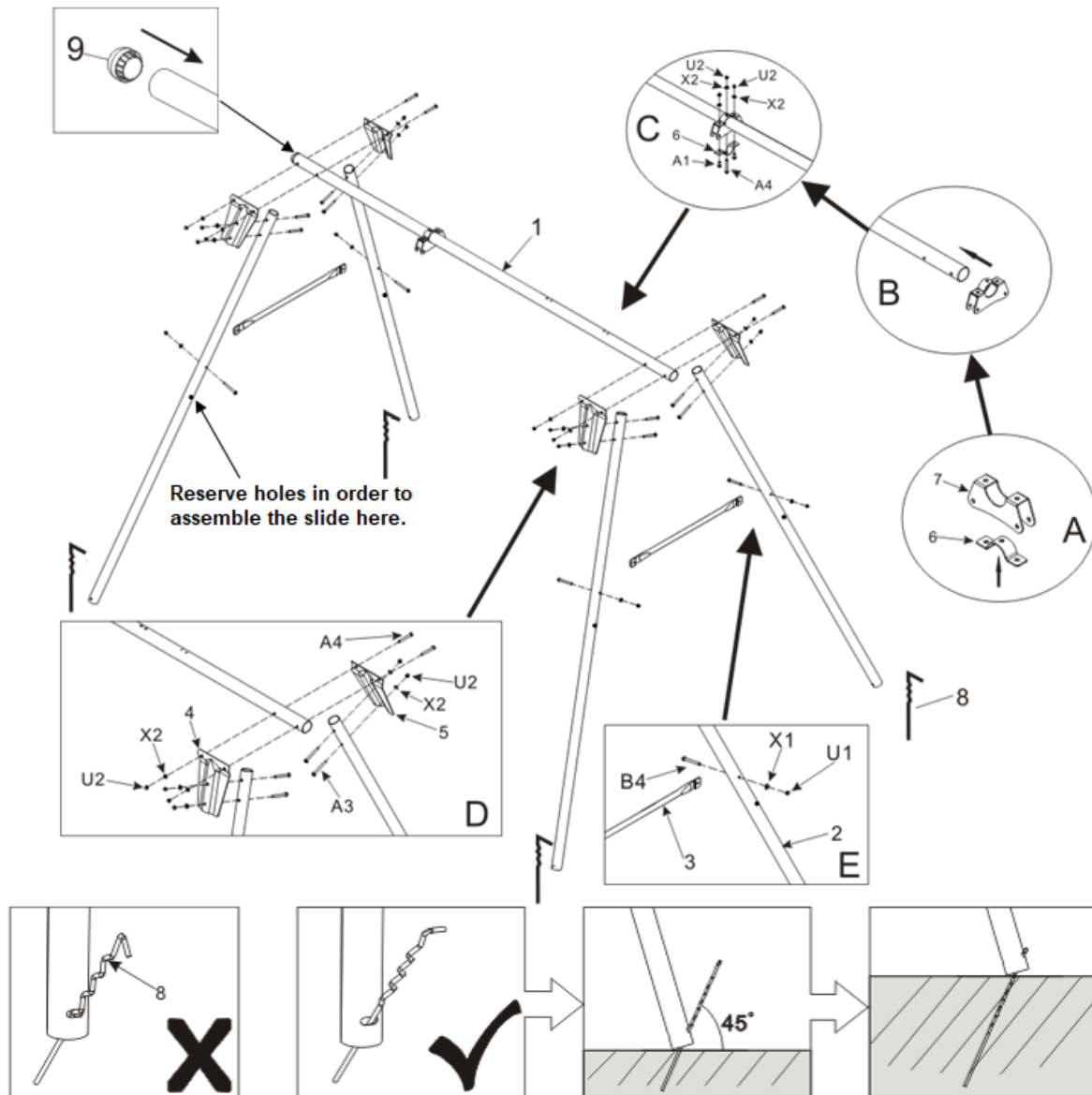
- This product is intended for max. 3 children in age from 3 to 10 years. The maximum load capacity of each seat is 35 kg. Never exceed this limit.
- Not suitable for children up to 3 years of age because of choking hazard (small parts).
- Read this manual carefully before starting assembly and using. Observe all warnings. Put this product on area with fine sand and sawdust. Never put it on trampled ground, concrete or another rough surface. Read all precautions before starting using.
- Tighten properly all bolts and nuts. Assembly should be done only by an adult.
- This product can be used both indoors and outdoors. If you use it indoors, keep a safety clearance of at least 3 m from each set leg and use concrete anchoring.
- You can use it on grass, but not on concrete. On other surface, check correct anchoring.
- Children should use it only under adult supervision.
- It is not suitable for children under 3 years of age.
- Intended only for home use.
- Read carefully this manual before first use and retain it for future reference.
- Regularly check all bolts and nuts. They should be properly tightened. Regularly check all parts for damage or wearing. Never use damaged or worn product. Don't do any improper modification.
- Use rubber caps to cover screws.
- Never use sharp or spiky object during using. If some sharp edges occur, stop using.
- Install it on a free area without obstacles.
- Use it on a flat and grassy area. Avoid terraces, concrete or rough terrain.
- Instruct children in proper and safe using. Never let them climb or hang on bars to avoid an injury.
- The swing seat should not be more than 600 mm above ground. Never stand on the seat during using.
- Hanging systems, hardware and other parts should be regularly checked and replaced if necessary.
- Ropes should be replaced every 12 months.
- Check the coating and rectify if necessary using non-toxic paint or car varnish.
- Legs must be concreted in ground. If it is impossible, use included anchoring system.
- Never let children unsupervised during playing.
- If the swing is damaged or not used for a long period, disassemble it or secure it against unauthorized use.
- This product meets the standard EN71.

PACKAGE LIST

No.	Description	Pc
1	Top support bar	1
2	Gym set leg	4
3	Side girt (with safety cap)	2
4	Strengthening slice (A)	2
5	Strengthening slice (B)	2
6	Half circle connector	2
7	Hanger support channel	1
8	Ground anchor	4
9	Plastic insert	2
10	Spanner	1
A4	M8x70 Hex bolt	5
A3	M8x60 Hex bolt	8
A1	M8x25 Hex bolt	2
B4	M6x55 Hex bolt	4
U1	M6 Safety nut	4
U2	M8 Safety nut	15
X1	M6 Iron washer	4
X2	M8 Iron washer	15
11	M6 Socket wrench	1
12	M8 Socket wrench	1



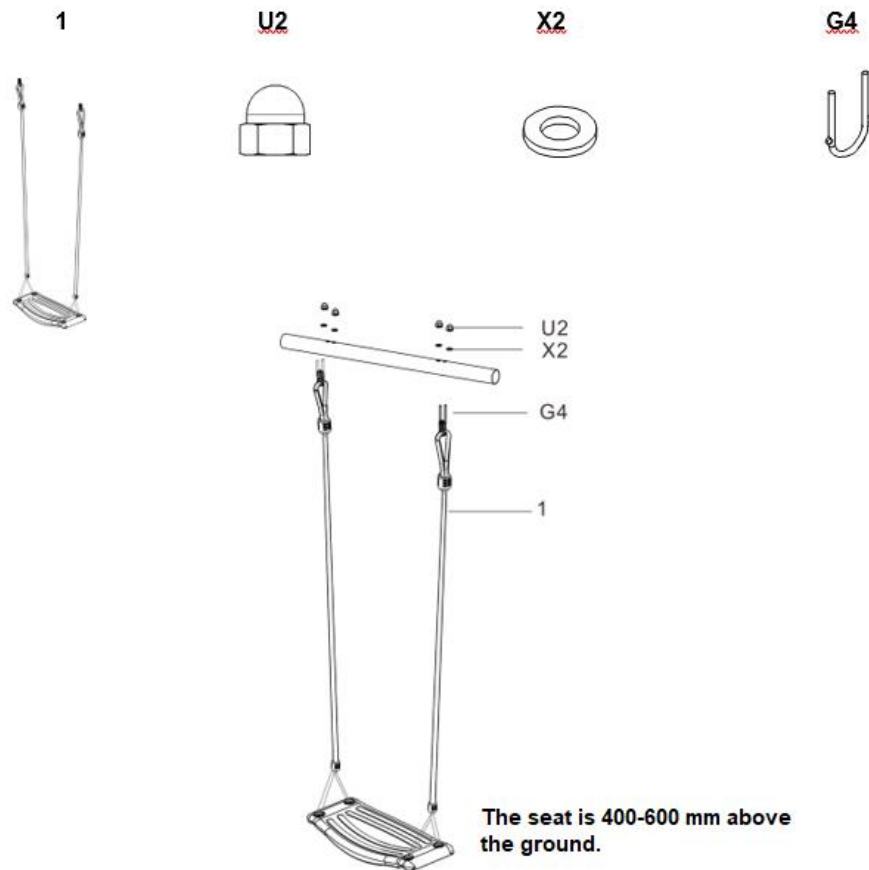
ASSEMBLY STEPS



- Put half circle connector (6) into the hanger support channel (7) through the channel.
- Thread the assembled component (step A) through top support bar.
- Place assembled part (step A) on place and fasten another half circle connector (6) using hex bolt (A1), hex bolt (A4), M8 nylon washer (X2) and M8 safety nut (U2).
- Attach strengthening slice A (4) and B (5) to top support bar using hex bolt (A4), M8 nylon washer (X2), M8 safety nut (U2) and plug the gym set leg (2) into the space of strengthening slice (A and B) on both sides. Connect gym set leg (2) and strengthening slice B (5) with hex bolt (A3), M8 nylon washer (X2), M8 safety nut (U2) on both sides.
- Connect the side girt (3) to gym set leg (2) using M6x60 hex bolt (B4), M6 nylon washer (X1), M6 safety nut (U1) on both sides.

SWING ACCESSORY

No.	Description	Pc
1	Swing seat set	2
G4	M8 U-bolt	4
U2	M8 Safety nut	8
X2	M8 Iron washer	8

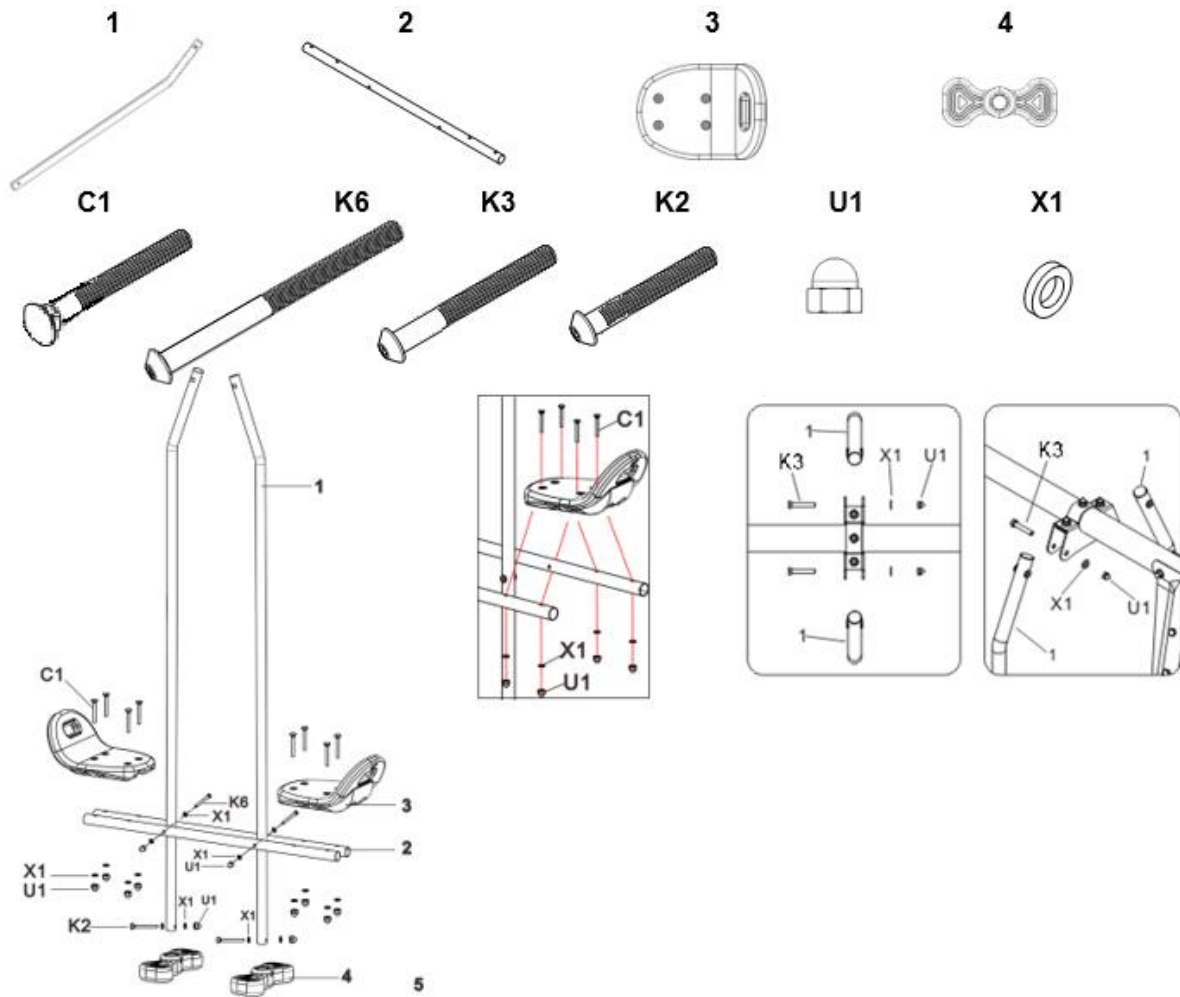


- Hang swing seat set (1) onto U-bolt (G4). Then attach the U-bolt to the top support bar and secure it with safety nut (U2) and washer (X2). Make sure that the distance between seat and ground is from 400 to 600 mm.

RIGID SWING ACCESSORY

No.	Description	Pc
1	Hanger tube	2
2	Seat tube	2
3	Rigid swing seat	2
4	Foot rest	2
C1	Bolt M6x45 mm	8
K6	Bolt M6x85 mm	2
K3	Bolt M6x45	2
K2	Bolt M6x65 mm	2

U1	M6 safety nut	14
X1	M6 Iron washer	16



- Attach two rigid swing seats (3) to two seat tubes (2) using bolt (C1), washer (X1) and M6 nuts (U1).
- Insert two-seat hanger (1) between assembled seat tube (2) using bolt (K6), washer (X1) and safety nut (U1).
- Attach two footrests (4) to the two-seat hanger (1) and secure with bolt (K2), washer (X1) and M6 safety nuts (U1).
- Hang the two-seat hanger onto the hanger clip on the top support bar and secure with bolt (K3), washer (X1) and M6 safety nuts (U1).

MAINTENANCE

This product is made of first-class materials. Keep the maintenance regularly and properly following steps below. Correct maintenance can prolong product lifespan. Pay attention of:

- Loosen or lost bolts and nuts.
- Damaged support bars.
- Bent or broken legs.
- Damaged seat.
- Damaged or worn ropes.
- Screws and sharp edges.



TERMS AND CONDITIONS OF WARRANTY, WARRANTY CLAIMS

General Conditions of Warranty and Definition of Terms

All Warranty Conditions stated hereunder determine Warranty Coverage and Warranty Claim Procedure. Conditions of Warranty and Warranty Claims are governed by Act No. 40/1964 Coll. Civil Code, Act No. 513/1991 Coll., Commercial Code, and Act No. 634/1992 Coll., Consumer Protection Act, as amended, also in cases that are not specified by these Warranty rules.

The seller is SEVEN SPORT s.r.o. with its registered office in Borivojova Street 35/878, Prague 13000, Company Registration Number: 26847264, registered in the Trade Register at Regional Court in Prague, Section C, Insert No. 116888.

According to valid legal regulations it depends whether the Buyer is the End Customer or not.

“The Buyer who is the End Customer” or simply the “End Customer” is the legal entity that does not conclude and execute the Contract in order to run or promote his own trade or business activities.

“The Buyer who is not the End Customer” is a Businessman that buys Goods or uses services for the purpose of using the Goods or services for his own business activities. The Buyer conforms to the General Purchase Agreement and business conditions to the extent specified in the Commercial Code.

These Conditions of Warranty and Warranty Claims are an integral part of every Purchase Agreement made between the Seller and the Buyer. All Warranty Conditions are valid and binding, unless otherwise specified in the Purchase Agreement, in the Amendment to this Contract or in another written agreement.

Warranty Conditions

Warranty Period

The Seller provides the Buyer a 24 months Warranty for Goods Quality, unless otherwise specified in the Certificate of Warranty, Invoice, Bill of Delivery or other documents related to the Goods. The legal warranty period provided to the Consumer is not affected.

By the Warranty for Goods Quality, the Seller guarantees that the delivered Goods shall be, for a certain period of time, suitable for regular or contracted use, and that the Goods shall maintain its regular or contracted features.

The Warranty does not cover defects resulting from (if applicable):

- User's fault, i.e. product damage caused by unqualified repair work, improper assembly, insufficient insertion of seat post into frame, insufficient tightening of pedals and cranks
- Improper maintenance
- Mechanical damages
- Regular use (e.g. wearing out of rubber and plastic parts, moving mechanisms, joints etc.)
- Unavoidable event, natural disaster
- Adjustments made by unqualified person
- Improper maintenance, improper placement, damages caused by low or high temperature, water, inappropriate pressure, shocks, intentional changes in design or construction etc.

Warranty Claim Procedure

The Buyer is obliged to check the Goods delivered by the Seller immediately after taking the responsibility for the Goods and its damages, i.e. immediately after its delivery. The Buyer must check the Goods so that he discovers all the defects that can be discovered by such check.

When making a Warranty Claim the Buyer is obliged, on request of the Seller, to prove the purchase and validity of the claim by the Invoice or Bill of Delivery that includes the product's serial number, or eventually by the documents without the serial number. If the Buyer does not prove the validity of the Warranty Claim by these documents, the Seller has the right to reject the Warranty Claim.

If the Buyer gives notice of a defect that is not covered by the Warranty (e.g. in the case that the Warranty Conditions were not fulfilled or in the case of reporting the defect by mistake etc.), the Seller is eligible to require a compensation for all the costs arising from the repair. The cost shall be calculated according to the valid price list of services and transport costs.

If the Seller finds out (by testing) that the product is not damaged, the Warranty Claim is not accepted. The Seller reserves the right to claim a compensation for costs arising from the false Warranty Claim.

In case the Buyer makes a claim about the Goods that is legally covered by the Warranty provided by the Seller, the Seller shall fix the reported defects by means of repair or by the exchange of the damaged part or product for a new one. Based on the agreement of the Buyer, the Seller has the right to exchange the defected Goods for a fully compatible Goods of the same or better technical characteristics. The Seller is entitled to choose the form of the Warranty Claim Procedures described in this paragraph.

The Seller shall settle the Warranty Claim within 30 days after the delivery of the defective Goods, unless a longer period has been agreed upon. The day when the repaired or exchanged Goods is handed over to the Buyer is considered to be the day of the Warranty Claim settlement. When the Seller is not able to settle the Warranty Claim within the agreed period due to the specific nature of the Goods defect, he and the Buyer shall make an agreement about an alternative solution. In case such agreement is not made, the Seller is obliged to provide the Buyer with a financial compensation in the form of a refund.



SEVEN SPORT s.r.o.

Registered Office:	Borivojova 35/878, 130 00 Praha 3, Czech Republic
Headquarters:	Delnicka 957, 749 01 Vitkov, Czech Republic
Warranty & Service Centre:	Cermenska 486, 749 01 Vitkov, Czech Republic
CRN:	26847264
VAT ID:	CZ26847264
Phone:	+420 556 300 970
E-mail:	eshop@insportline.cz reklamace@insportline.cz servis@insportline.cz
Web:	www.insportline.cz

SK

INSPORTLINE s.r.o.

Headquarters, Warranty & Service centre: Elektrická 6471, 911 01 Trenčín, Slovakia

CRN: 36311723

VAT ID: SK2020177082

Phone: +421(0)326 526 701

E-mail: objednavky@insportline.sk

reklamacie@insportline.sk

servis@insportline.sk

Web: www.insportline.sk

Date of Sale:

Stamp and Signature of Seller: