



USER MANUAL – EN

**IN 3360103 Three-Wheel Stroller/Tricycle with Tow Bar
Coccolle Urbio**

**IN 3370103 Three-Wheel Stroller/Tricycle with Tow Bar
Coccolle Urbio Army**



Picture is only for illustration purposes. Color is subject of change.






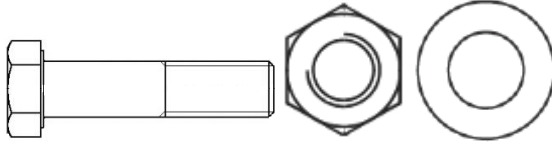






CONTENTS

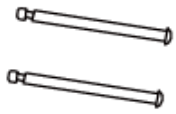




SAFETY INSTRUCTIONS3
PARTS4
ASSEMBLY5
FUNCTIONS.....7
TERMS AND CONDITIONS OF WARRANTY, WARRANTY CLAIMS8

SAFETY INSTRUCTIONS

- This product is for children from 9 – 72 months.
- Read the manual carefully before use. Keep it for the future reference. Wrong or inappropriate use can lead to serious injury of the child.
- Always wear protective equipment (helm, protectors) wear suitable shoes.
- Keep away from open fire.
- Installation can be done only by adults.
- This product is not meant to be used on roads with car traffic.
- Kids should put their feet on the feet rest while the tricycle is moving to avoid injury by moving pedals.
- Use this product carefully to avoid injury of other people.
- Check if all bolts and nuts are fastened enough before every ride.
- Check that all parts are installed correctly to avoid injury of the kid.
- Do not overload.
- Avoid using the product in wet environment, cold or hot temperatures.
- This product should be used only by adult supervision.
- Avoid crushing this product against hard objects.
- Do not use in dark or in the dusk.
- Put all package and protective materials into a bin according to local laws and regulations.
- Using natural polishing oil can prevent rusting of the welded parts.
- This product can be used by kids to move the tricycle by pedals under the adult supervision or by pushing the tricycle by adult while the kid has their feet on feet rest to avoid injury by moving pedals.
- Weight limit: 30 kg
- The product meets standards: EN 71-1, EN 71-2, EN 71-3

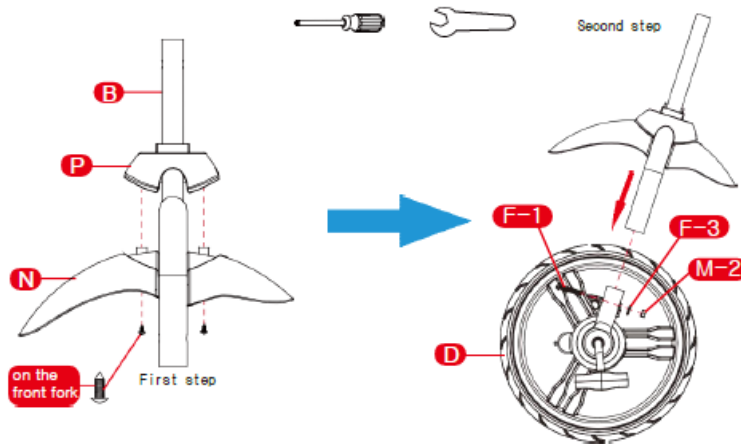
PARTS

A		Frame
B		Front fork
C		Rear wheels
D		Front wheel
E		Push bar (bottom)
F		F-1. M6*30 screw, F-2. M6 nut, F-3. 6mm shim
G		Handlebar
H		Back seat
I		Rear basket
J		Push bar (up)
K		Canopy
L		Foot rest

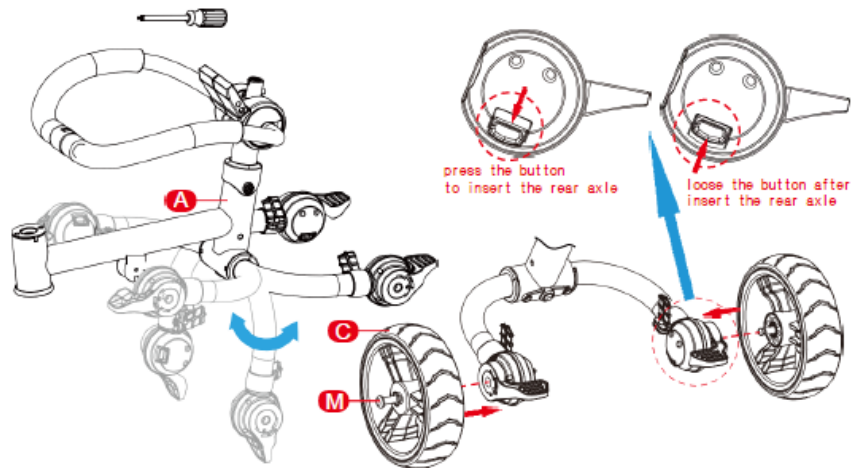
M		Rear axle
N		Big fender
O		Seat
P		Little fender
Q		Bottle holder

ASSEMBLY

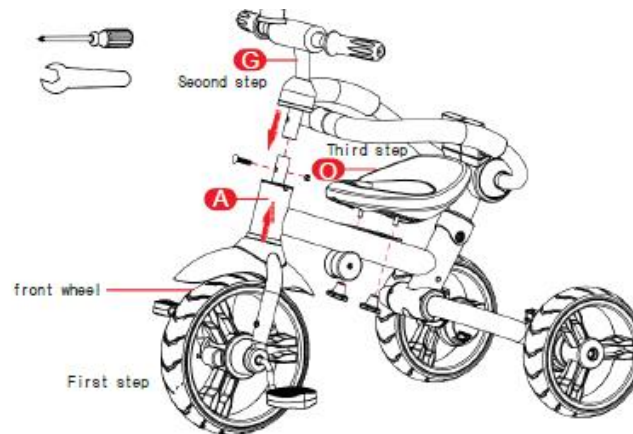
1. Insert the big fender (N) into the fork (B), then insert the little fender (P) into the front fork (B), then screw them with screw that is on the front fork.
2. Insert the front fork (B) into the front wheel (D), then tighten them with M6x30 screw (F-1), M6 nut (F-2) and 6 mm shim (F-3).



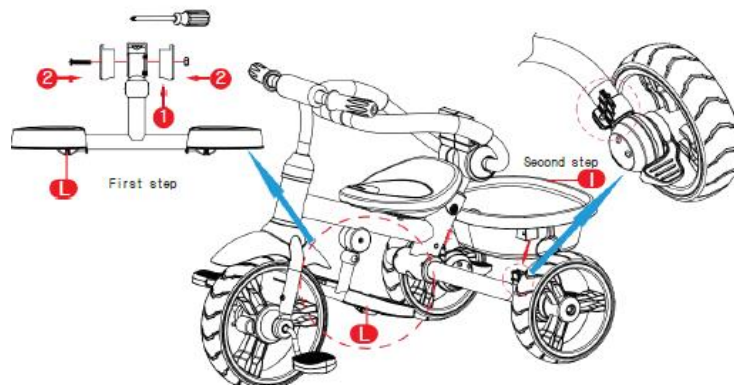
1. Open the rear fork of the frame (A), until you hear the “click” sound.
2. Insert the rear axle (M) into the rear wheels (C) then install them into the rear fork (A). At the same time press the button on the rear fork (A). After you put the rear wheels (C) on the rear fork (A), loose the button and make sure that the wheels are in the right position.



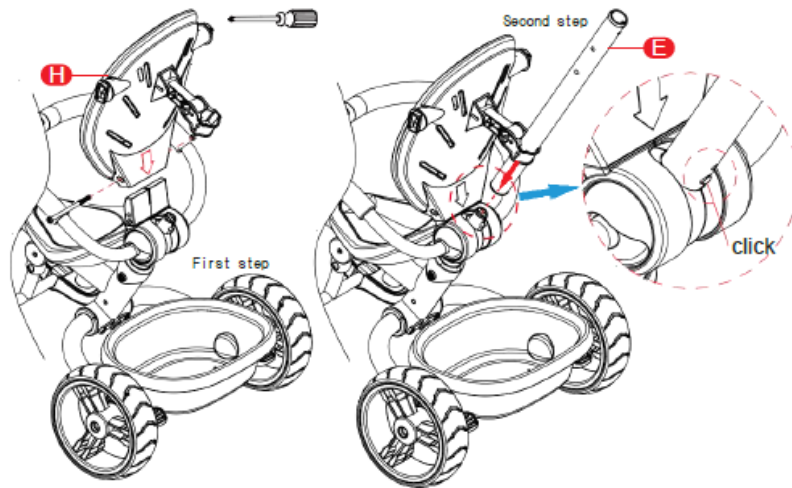
1. Insert the front wheel (D) into a frame (A).
2. Take off the screw on the handlebars (G) and then insert the handlebars (G) into the front fork (B), then tighten them with screw from the handlebars.
3. Take off the screw under the seat (O) and then install the seat on the frame (A) then tighten them with screw from the seat (O).



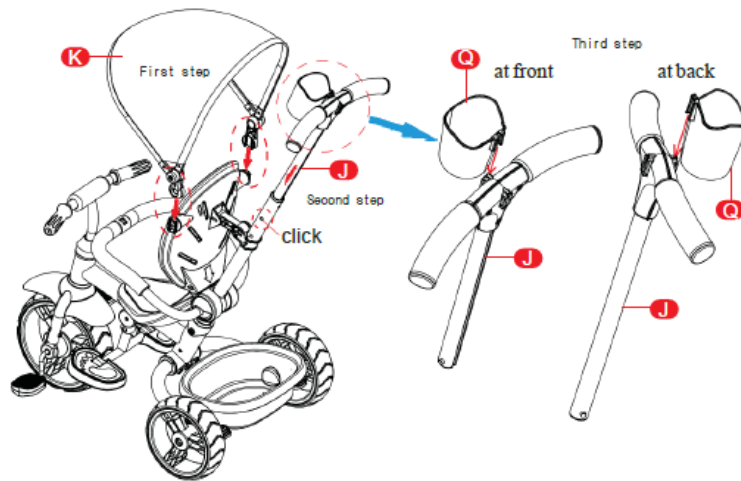
1. Take off the screw from the feet rest and then install the feet rest under the frame and tighten the feet rest with screw.
2. Insert the rear basket (I) into the rear fork of the frame (A).



1. Take of the screw from the backrest (H) and then insert the backrest (H) into the backrest bracket and tighten the backrest (H) with screw.
2. Insert the bottom push bar (E) into the steering level through the adjustable part behind the backrest (H), make sure it is in the right position.

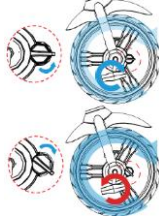

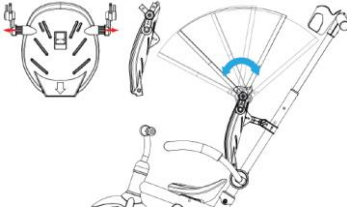
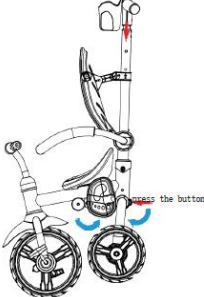

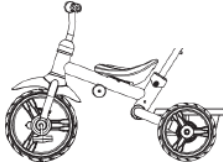


1. Install the canopy (K) into the backrest (H).
2. Insert the push bar (J) into the bottom push bar (E).
3. Install the bottle holder (Q) on the push bar (J).



FUNCTONS

<p>Foldable feet rest</p>	
<p>Brake</p>	

<p>Free wheel</p>	
<p>Adjustable backrest</p>	
<p>Adjustable canopy</p>	
<p>Foldable tricycle</p>	
<p>Push mode</p>	
<p>Ride mode</p>	

TERMS AND CONDITIONS OF WARRANTY, WARRANTY CLAIMS

General Conditions of Warranty and Definition of Terms

All Warranty Conditions stated hereunder determine Warranty Coverage and Warranty Claim Procedure. Conditions of Warranty and Warranty Claims are governed by Act No. 40/1964 Coll. Civil Code, Act No. 513/1991 Coll., Commercial Code, and Act No. 634/1992 Coll., Consumer Protection Act, as amended, also in cases that are not specified by these Warranty rules.

The seller is SEVEN SPORT s.r.o. with its registered office in Borivojova Street 35/878, Prague 13000, Company Registration Number: 26847264, registered in the Trade Register at Regional Court in Prague, Section C, Insert No. 116888.

According to valid legal regulations it depends whether the Buyer is the End Customer or not.

“The Buyer who is the End Customer” or simply the “End Customer” is the legal entity that does not conclude and execute the Contract in order to run or promote his own trade or business activities.

“The Buyer who is not the End Customer” is a Businessman that buys Goods or uses services for the purpose of using the Goods or services for his own business activities. The Buyer conforms to the General Purchase Agreement and business conditions to the extent specified in the Commercial Code.

These Conditions of Warranty and Warranty Claims are an integral part of every Purchase Agreement made between the Seller and the Buyer. All Warranty Conditions are valid and binding, unless otherwise specified in the Purchase Agreement, in the Amendment to this Contract or in another written agreement.

Warranty Conditions

Warranty Period

The Seller provides the Buyer a 24 months Warranty for Goods Quality, unless otherwise specified in the Certificate of Warranty, Invoice, Bill of Delivery or other documents related to the Goods. The legal warranty period provided to the Consumer is not affected.

By the Warranty for Goods Quality, the Seller guarantees that the delivered Goods shall be, for a certain period of time, suitable for regular or contracted use, and that the Goods shall maintain its regular or contracted features.

The Warranty does not cover defects resulting from (if applicable):

- User's fault, i.e. product damage caused by unqualified repair work, improper assembly, insufficient insertion of seat post into frame, insufficient tightening of pedals and cranks
- Improper maintenance
- Mechanical damages
- Regular use (e.g. wearing out of rubber and plastic parts, moving mechanisms, joints etc.)
- Unavoidable event, natural disaster
- Adjustments made by unqualified person
- Improper maintenance, improper placement, damages caused by low or high temperature, water, inappropriate pressure, shocks, intentional changes in design or construction etc.

Warranty Claim Procedure

The Buyer is obliged to check the Goods delivered by the Seller immediately after taking the responsibility for the Goods and its damages, i.e. immediately after its delivery. The Buyer must check the Goods so that he discovers all the defects that can be discovered by such check.

When making a Warranty Claim the Buyer is obliged, on request of the Seller, to prove the purchase and validity of the claim by the Invoice or Bill of Delivery that includes the product's serial number, or eventually by the documents without the serial number. If the Buyer does not prove the validity of the Warranty Claim by these documents, the Seller has the right to reject the Warranty Claim.

If the Buyer gives notice of a defect that is not covered by the Warranty (e.g. in the case that the Warranty Conditions were not fulfilled or in the case of reporting the defect by mistake etc.), the Seller is eligible to require a compensation for all the costs arising from the repair. The cost shall be calculated according to the valid price list of services and transport costs.

If the Seller finds out (by testing) that the product is not damaged, the Warranty Claim is not accepted. The Seller reserves the right to claim a compensation for costs arising from the false Warranty Claim.

In case the Buyer makes a claim about the Goods that is legally covered by the Warranty provided by the Seller, the Seller shall fix the reported defects by means of repair or by the exchange of the

damaged part or product for a new one. Based on the agreement of the Buyer, the Seller has the right to exchange the defected Goods for a fully compatible Goods of the same or better technical characteristics. The Seller is entitled to choose the form of the Warranty Claim Procedures described in this paragraph.

The Seller shall settle the Warranty Claim within 30 days after the delivery of the defective Goods, unless a longer period has been agreed upon. The day when the repaired or exchanged Goods is handed over to the Buyer is considered to be the day of the Warranty Claim settlement. When the Seller is not able to settle the Warranty Claim within the agreed period due to the specific nature of the Goods defect, he and the Buyer shall make an agreement about an alternative solution. In case such agreement is not made, the Seller is obliged to provide the Buyer with a financial compensation in the form of a refund.



SEVEN SPORT s.r.o.

Registered Office:	Borivojova 35/878, 130 00 Praha 3, Czech Republic
Headquarters:	Delnicka 957, 749 01 Vitkov, Czech Republic
Warranty & Service Centre:	Cermenska 486, 749 01 Vitkov, Czech Republic
CRN:	26847264
VAT ID:	CZ26847264
Phone:	+420 556 300 970
E-mail:	eshop@insportline.cz reklamace@insportline.cz servis@insportline.cz
Web:	www.insportline.cz

SK

INSPORTLINE s.r.o.

Headquarters, Warranty & Service centre:	Elektricka 6471, 911 01 Trenčin, Slovakia
CRN: 36311723	
VAT ID: SK2020177082	
Phone:	+421(0)326 526 701
E-mail:	objednavky@insportline.sk reklamacie@insportline.sk servis@insportline.sk
Web:	www.insportline.sk

Date of Sale:

Stamp and Signature of Seller: