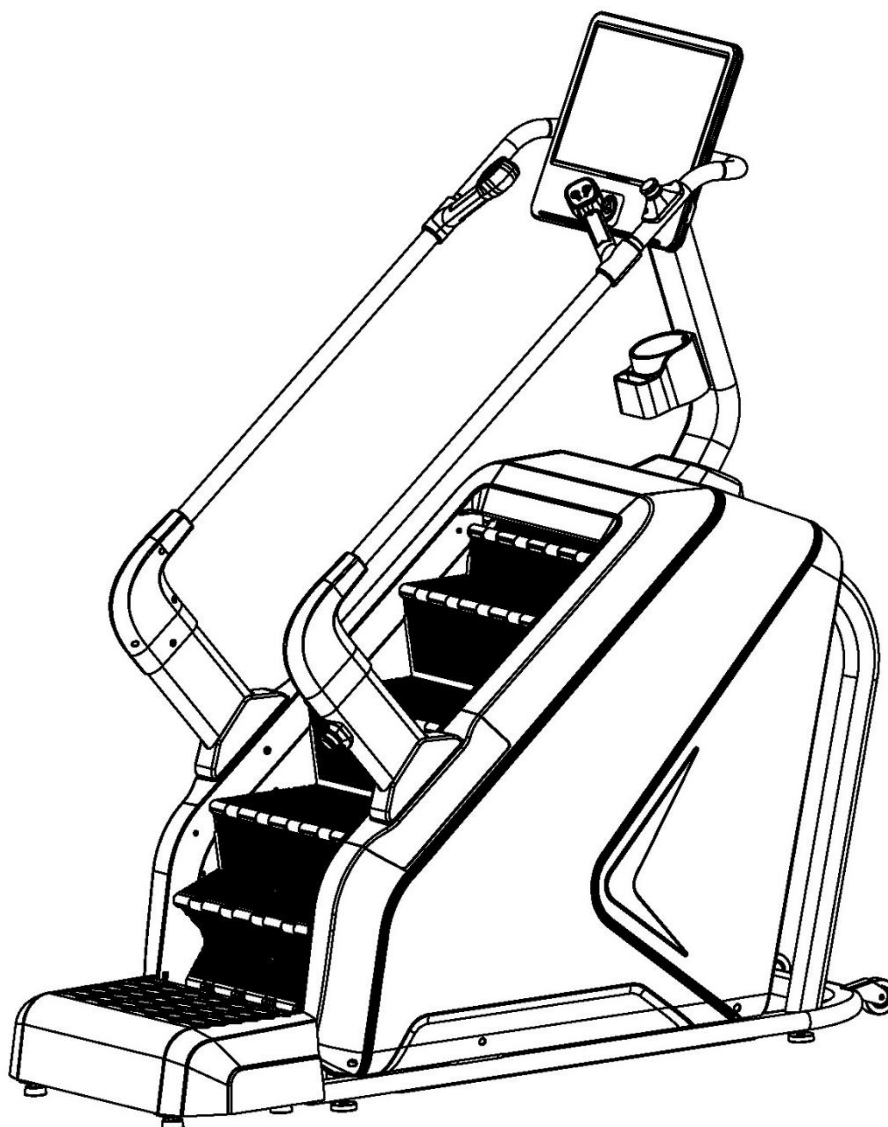




## USER MANUAL – EN

### IN 30102 Fitness stepmill inSPORTline Velocer STP\_



SevenSport s.r.o. reserves the right to make any changes and improvements to its product without prior notice. Visit our website [www.inSPORTline.eu](http://www.inSPORTline.eu) where you will find the latest version of the manual.

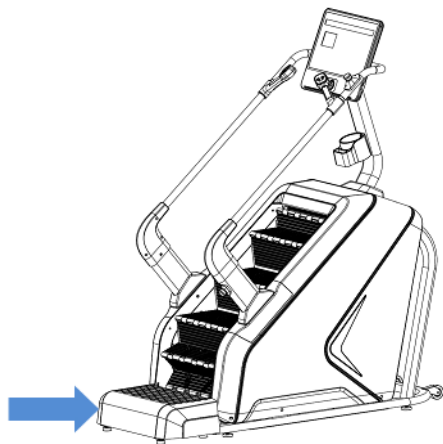
# CONTENTS

|   |    |
|---|----|
| SAFETY INSTRUCTIONS.....                                | 3  |
| USE .....   | 4  |
| ASSEMBLY .....  | 5  |
| TRANSPORTING .....                                      | 10 |
| CONSOLE .....   | 11 |
| PROGRAMS .....  | 13 |
| TROUBLESHOOTING .....                                   | 16 |
| PARTS LIST .....  | 17 |
| DRAWING .....   | 19 |
| ENVIRONMENT PROTECTION .....                            | 20 |
| TERMS AND CONDITIONS OF WARRANTY, WARRANTY CLAIMS ..... | 20 |

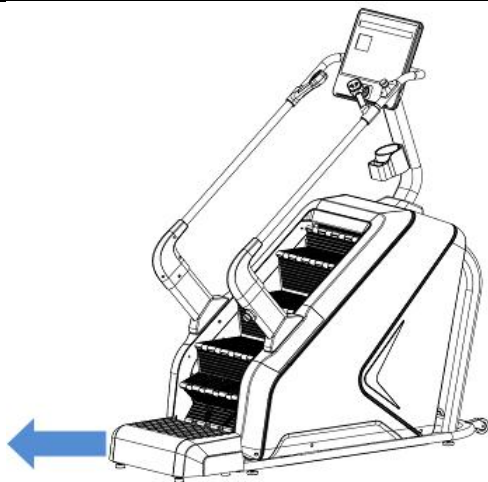
## SAFETY INSTRUCTIONS

- Read this manual carefully before first use and retain it for future reference. Use the product only according to this manual and for its intended purpose. Do not modify the product in any way.
- **WARNING!** Before maintenance, always unplug the device from electrical outlet to prevent burning or electrocuting yourself.
- Do not use in rooms with high humidity.
- While the product is turned on, pay attention to its operating status to avoid an injury. If the machine is idle, it is recommended to turn off the power and unplug the power cord.
- Keep the stepmill away from children and pets. Never leave them unattended near the device.
- Never use the product if parts of it are worn or damaged. Regularly check all the bolts, nuts and other connecting parts to make sure they are not loose. Damaged or worn parts should be replaced immediately.
- Never use the stepmill if the plug or power cord are damaged. If the power cord doesn't work properly or if it has been exposed to water, stop using it at once and have it repaired or replaced by a qualified technician or the customer service.
- Never insert anything into the open spaces found on the device.
- This product cannot be used outdoors.
- Do not use the product in a room without proper ventilation or with low levels of oxygen.
- Always unplug the power cord after shutting the stepmill off.
- If the power cord or the plug is damaged, contact the service department for repair.
- This product is not intended for people with physical or mental disabilities and unexperienced users (including children), unless they are under qualified supervision.
- Exercise according to the given instructions. Improper exercising may result in an injury.
- For the assembly, prepare a wide area with a flat and clean surface.
- The stepmill can only be placed on a flat, clean and solid surface. Keep a safety clearance of 2 x 1 m behind the device and at least 0.6 m around the rest.
- You should provide regular maintenance and check the stepmill for damage.
- No adjustable part should protrude and limit the user's movements.
- If the first stair is too high for you, use the foot supports to get on.
- Always hold on to the handlebars while getting on/off the device.
- Wear appropriate sports clothes and shoes. Avoid loose clothes so they don't get stuck in the moving parts of the stepmill.
- Step onto the second stair while holding on to the handlebars and use this as a standby position. Don't start exercising before you stand on the stair.
- Always hold the handlebar as a support.
- **Max. user weight:** 180 kg
- **Category:** SC (according to EN957) suitable for commercial and professional use
- **WARNING!** The heart rate frequency monitoring may not be completely accurate. Overexertion during training can lead to a serious injury or even death. If you start to feel faint, stop the exercise immediately.

## USE



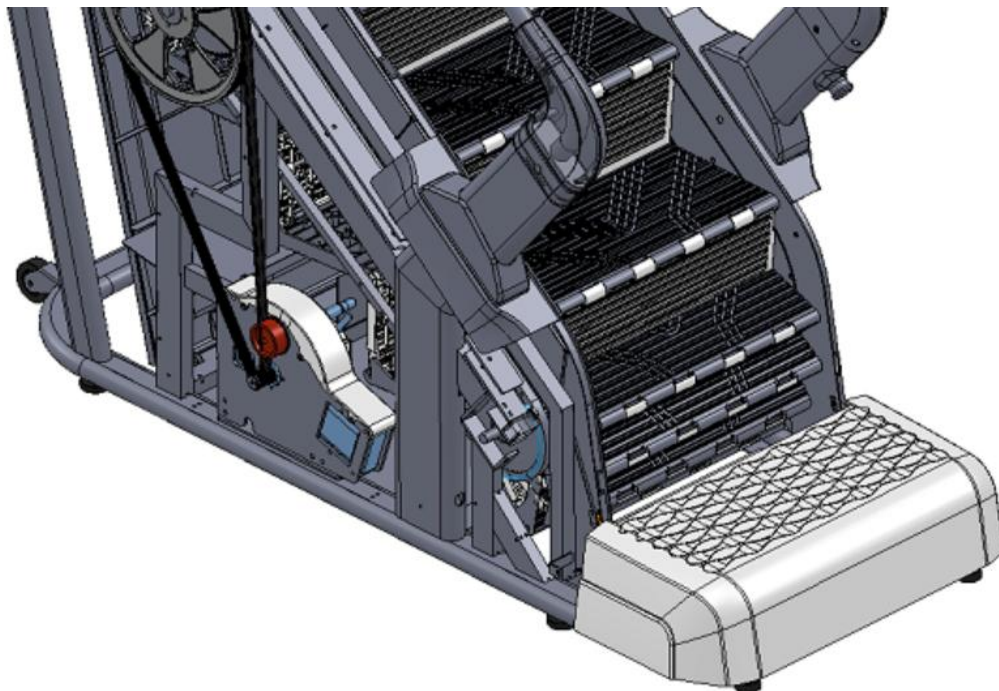
Stand on the stepper of the steppmill. Start the steppmill and set the desired program.



Press STOP to stop the steppmill. The steppmill will start to slow down until they come to a complete stop.

If the steppmill shake during use, the belt bolts need to be tightened.

Remove the side panels and use the bolts to tighten (clockwise) or loosen (counterclockwise) the belt.



- If the START/STOP button does not work, do not use the device until it has been repaired.
- Always wear suitable clean shoes.
- The stepmill is equipped with two emergency buttons. The buttons are located under the handles and on the bottom right side of the handles.
- Maintains a steady speed during exercise.

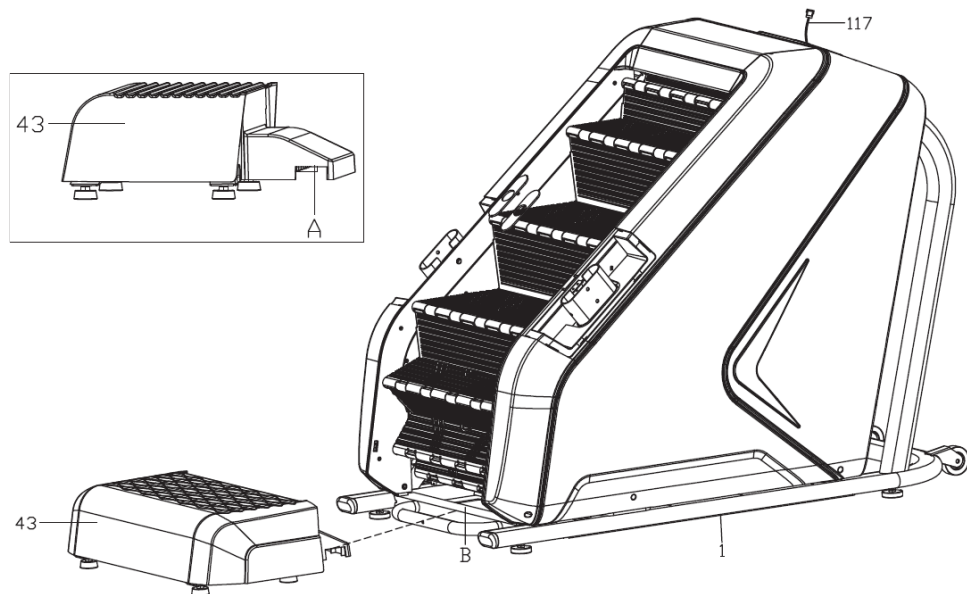
## ASSEMBLY

### Step 1

Pull out and unfold all the parts.

Unpack the main frame (1) on a flat and clean surface.

Attach the stepper (43) to the main frame as shown.

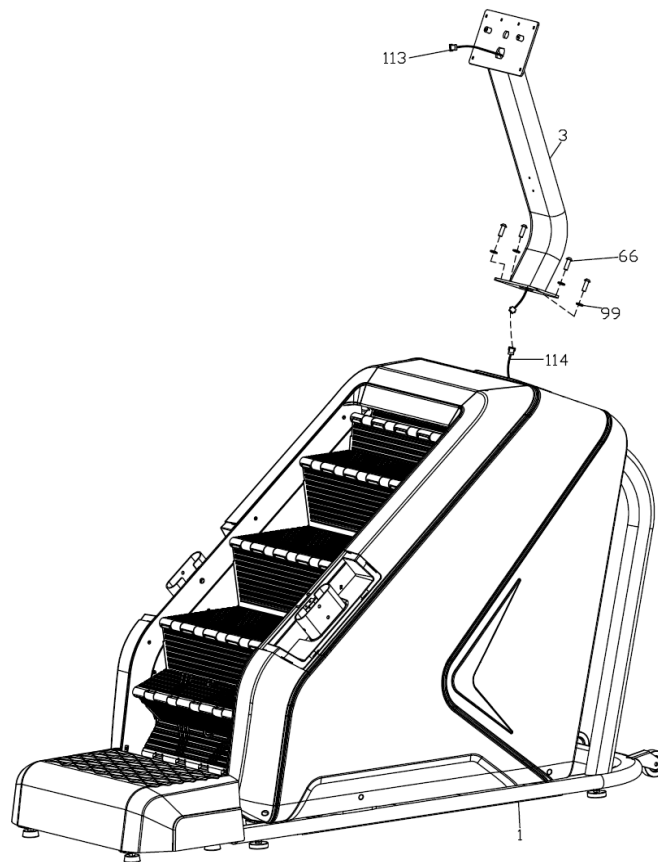


## Step 2

Connect the cable from the main frame (114) to the cable leading from the post (113).

Attach the console post (3) to the main frame (1) using bolts (55) and washers (99).

Don't tighten yet!

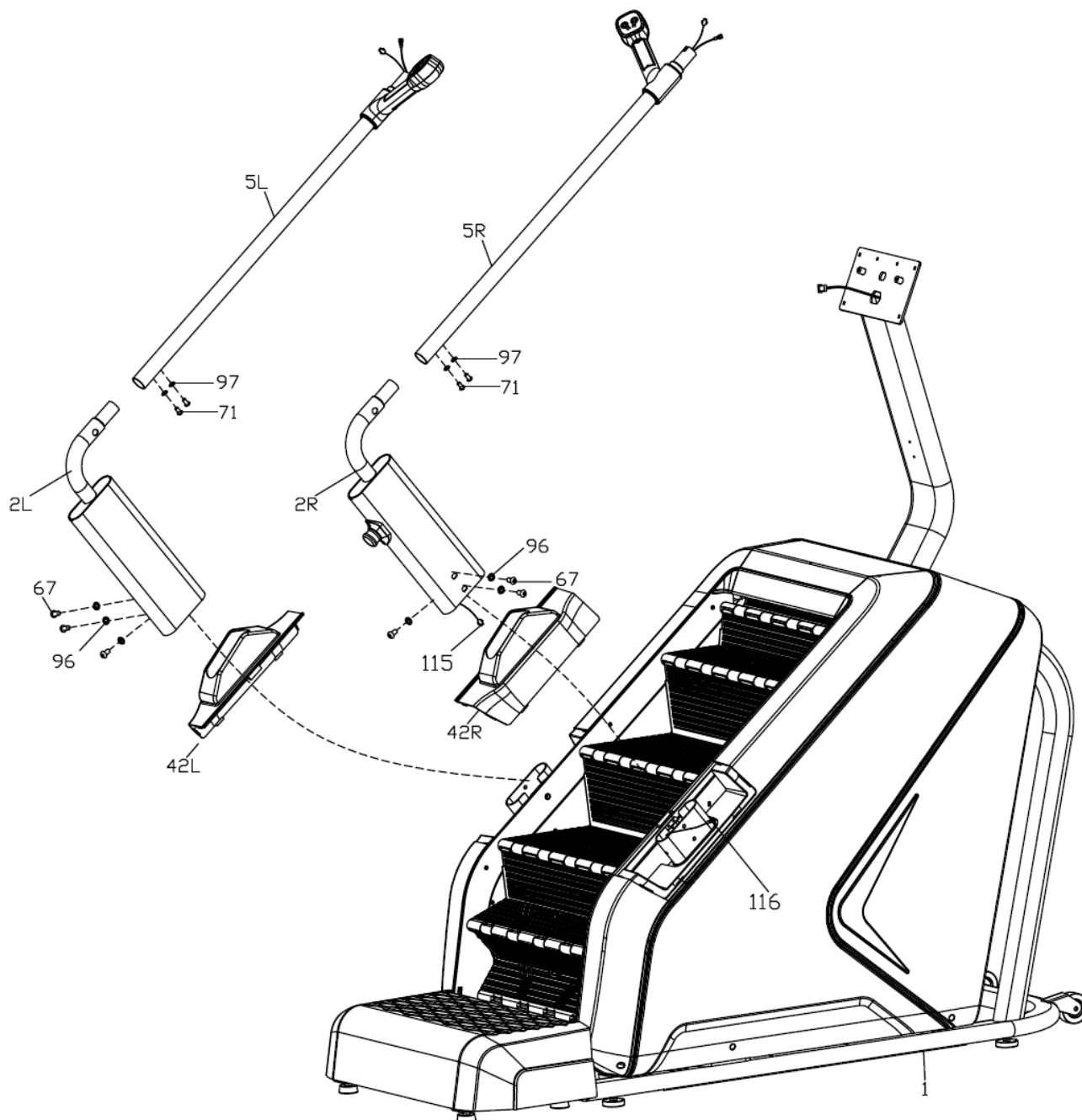


### Step 3

Pass the cable (115) through the cover (42R) and connect it to the cable (116).

Pass the handle base (2 L/R) through the covers (42 L/R) and fix the handle base to the main frame (1) using bolts (67) and washers (96). Don't tighten yet.

Fasten the handles (5 L/R) to the base of the handles (2 L/R) with the bolts (71) and washers (97).



#### Step 4

Connect the lower pulse cable (119) to the cable (120). Connect the cables (122 and 123), (117 and 120) on the left side and the cables (119 and 120), (125 and 126) on the right side.

Fasten the rear handle (4) to the handles (5 L/R) and secure with the bolts (71) and washer (97), do not tighten yet.

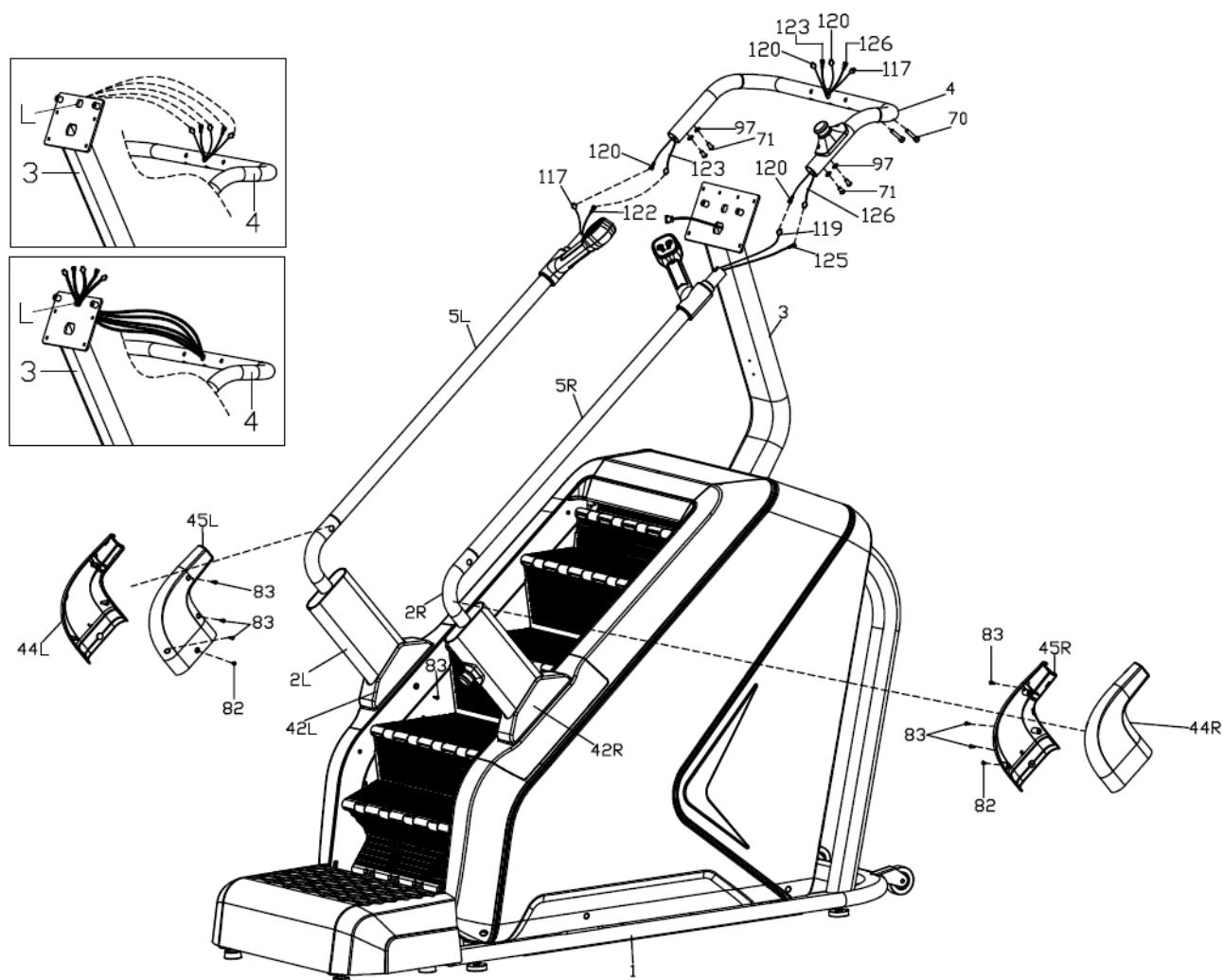
Pass the cables (120, 123, 126, 117) from the handle (4) through the post (3).

Use the bolts (70) to secure the handle (4) to the bracket (3), do not tighten yet.

When you are done with assembly above, tighten all the bolts.

Fasten the covers (42 L/R) to the main frame (1) with the bolts (83).

Fasten the covers (44 L/R) and (45 L/R) to the bases of the handles (2) using bolts (83) and washers (82).





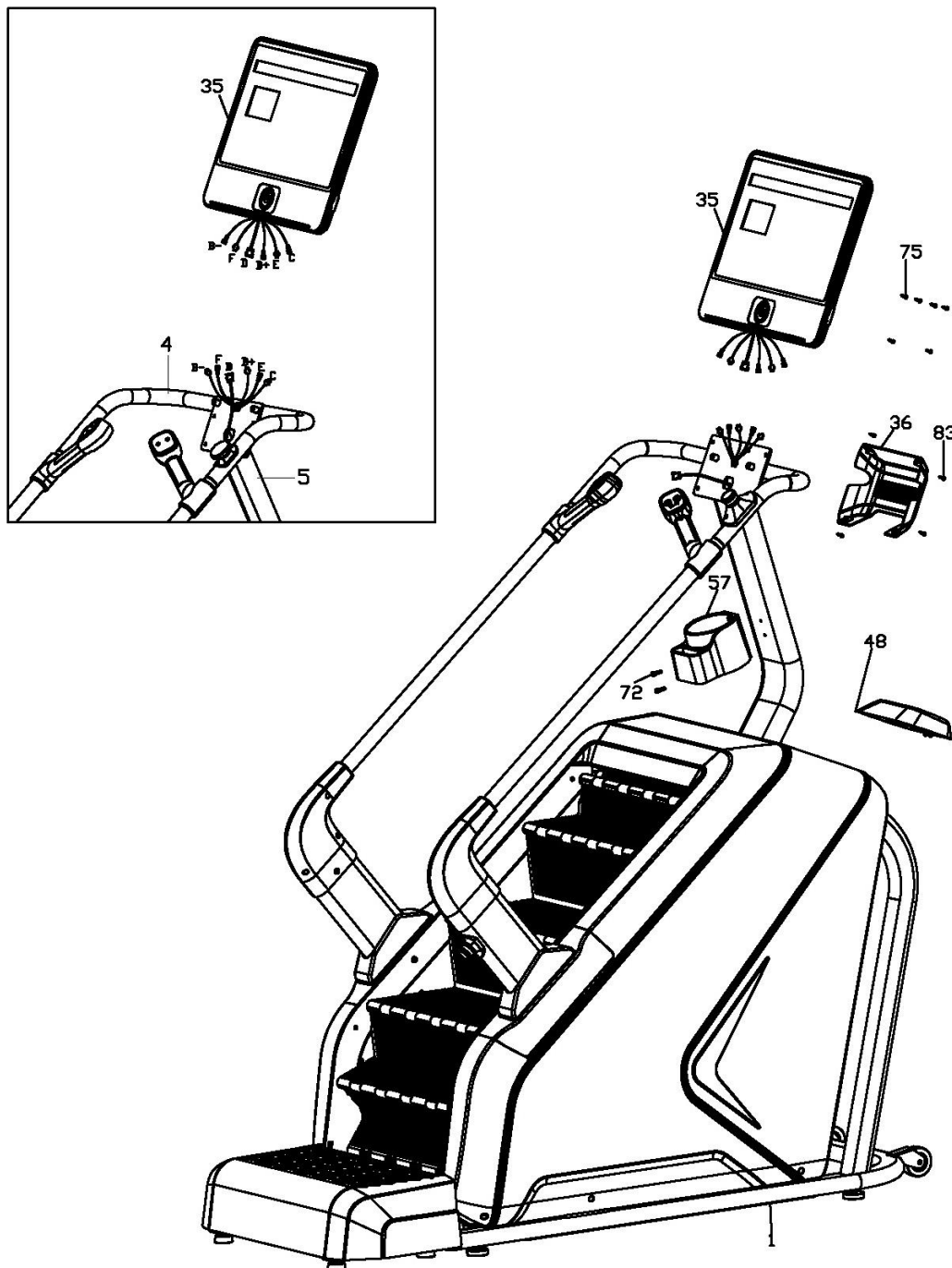
### Step 5

Connect the cables from the console (35) to the corresponding cables from the handles (4) and the console post (3).

Attach the console (35) to the console post (3) with bolts (75). Then attach the console cover (36) to the back of the console (35) with bolts (83).

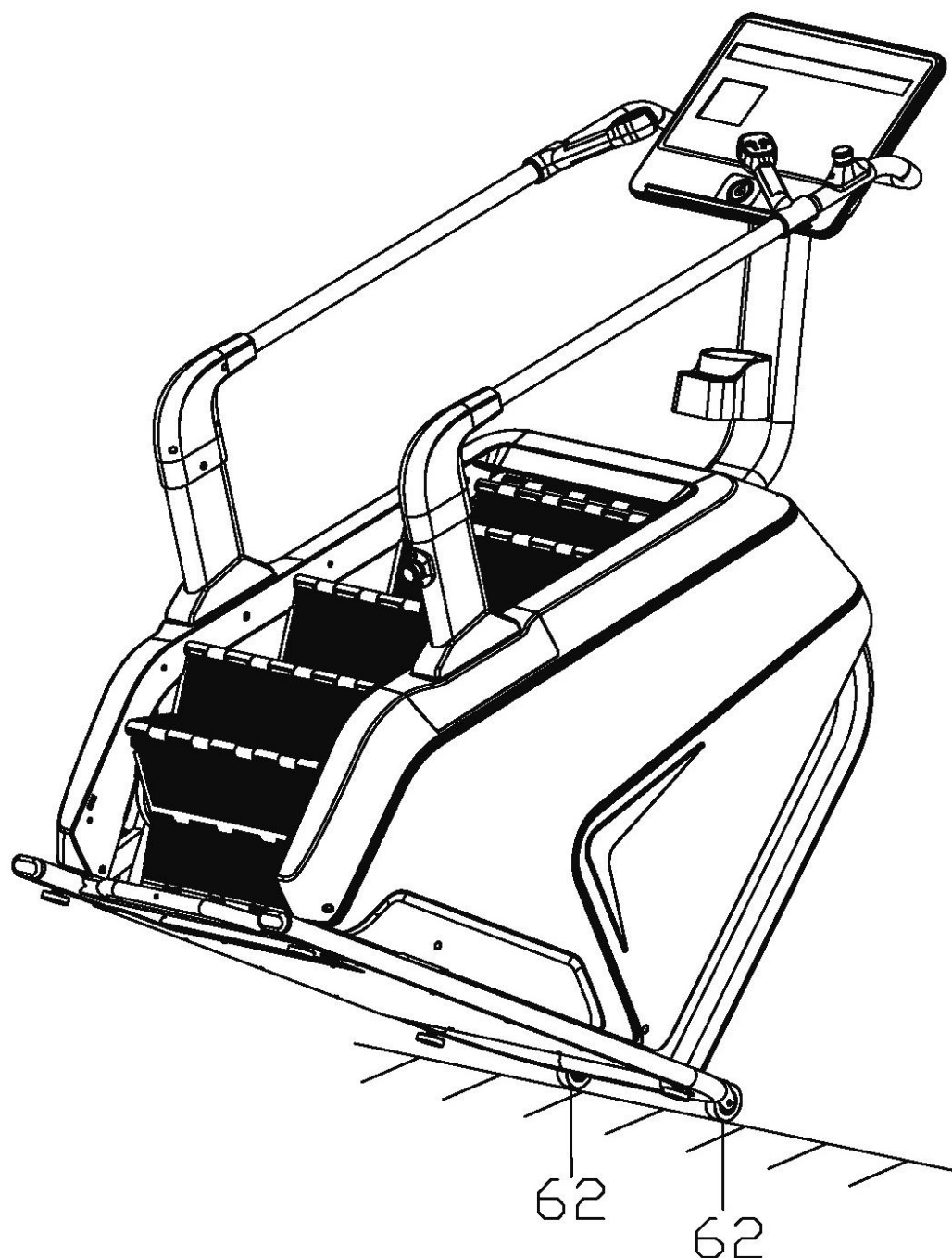
Attach the bottle holder (57) to the console holder (3) with bolts (72).

Open the post cover (48) and fasten it around the post (3) and onto the main frame (1).

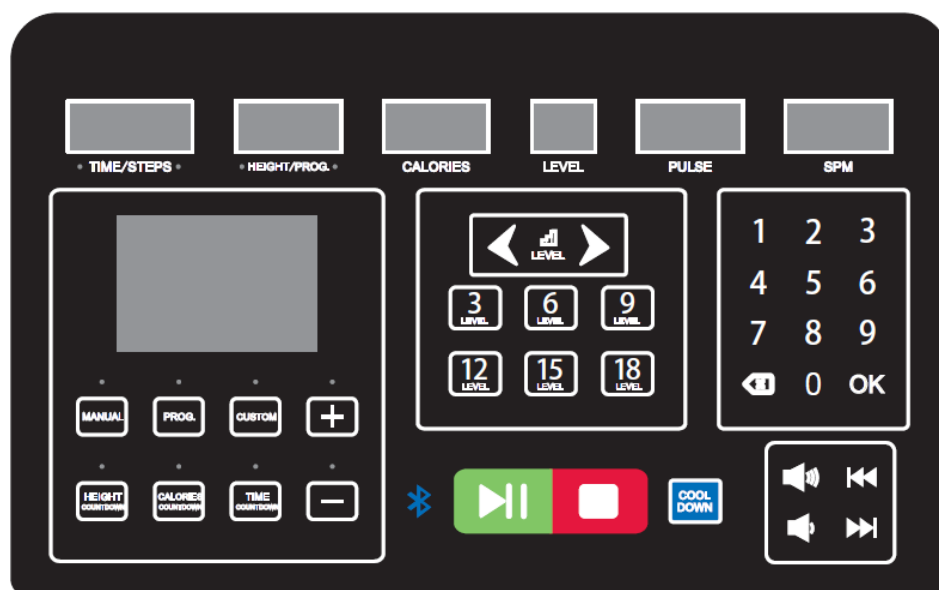


## TRANSPORTING

Before moving on wheels, make sure that the path is free of obstacles, cables and similar objects. Ask another person for help. Carefully tilt the stepmill on the transport wheels (62)



## CONSOLE



## DISPLAY

|             |  |
|-------------|--|
| TIME/STEPS  | <p>Displays the time and number of steps in a cycle every 5 seconds.</p> <p>Time display range: 0:00 – 99:59. In the countdown time mode, the time will be subtracted from the set value until it reaches 0:00, after which the stepmill will start to slow down until they stop.</p> <p>Step display: the current step count is displayed.</p>  |
| HEIGHT/PROG | <p>Displays the height traveled and the number of the selected program.</p> <p>Height display range: 0:0 – 999, 1 meter = 5 steps. In countdown mode, the value will be subtracted from the set value until it reaches 0.0, after which the stepmill will start to slow down until they stop.</p> <p>Selected program: the number of the current program or the current segment of the program is displayed.</p> |
| CALORIES    | <p>Displays the number of burned calories.</p> <p>Display range: 0.0 – 999. In countdown mode, the value will be subtracted from the set value until it reaches 0.0, after which the stepmill will start to slow down until they stop.</p>   |
| LEVEL       | <p>Displays the selected speed.</p> <p>Adjustment range: 1 – 25.</p>   |
| PULSE       | <p>Displays the user's heart rate. For detection, you need to hold the heart rate sensors.</p> <p>Display range: 50~200 beats per minute.</p> <p>The value is for reference only and is not intended for medical or medical purposes.</p>  |
| SPM         | Displays the speed of rotation   |
| MAIN        | Displays the program diagram or the number of floors traveled (1 floor = 3.5 meters)   |

## BUTTON DESCRIPTION

**MANUAL** – quick program selection


**PROG** – selection of preset programs


**CUSTOM** – select and set up your own program. Press OK to enter the value settings. Use the + / - buttons to adjust the parameters.

**HEIGHT COUNTDOWN** – enter the height countdown setting. Use the + / - buttons to adjust the parameters.

**CALORIES COUNTDOWN** – enter the calorie countdown setting. Use the + / - buttons to adjust the parameters.

**TIME COUNTDOWN** – enter the time countdown settings. Use the + / - buttons to adjust the parameters.

**START/PAUSE**  – before starting, make sure that both emergency buttons are not active and the infrared sensor is not blocked. Press the button to start or pause operation.



**STOP**  – during exercise, press the button to stop the program and reset all measured values.

**COOL DOWN** – press the button during exercise to switch the stepmill to cool down mode. The countdown starts, the stepmill start to slow down during the countdown. The length of the countdown depends on the current speed of the program.

Speed 1 – 15, a 30-second countdown starts.

Speed 16 – 25, a 45-second countdown starts.


Press STOP to end the program immediately.

**LEVEL**  /  – during program setup, you can use the buttons to set the value.

During the exercise, you can increase or decrease the value by 1 point by pressing the corresponding button. Holding down the button will make a continuous change until you release the button.

**LEVEL 3, 6, 9, 12, 15** – speed selection shortcut buttons

**NUMERIC KEYPAD** – during the exercise, you can set the desired value and confirm by pressing OK.

Press  the button to delete value. If you exceed the possible value, the console automatically sets the highest or lowest possible value.

## MUSIC CONTROL –



- Volume Up



- Volume down




- previous song




- the following song

## PROGRAMS


### CONTROLLING A RUNNING PROGRAM

**LEVEL**  – speed increase

**LEVEL**  – speed decrease

**NUMERIC KEYPAD** – during the exercise you can set the desired value and confirm by pressing OK

**STOP**  – during exercise, press the button to stop the program.

**START / PAUSE**  – press the button to start or pause operation.

Heart rate data is displayed approx. 3 seconds after you hold the sensors.

### QUICK START (MANUAL)

Make sure that the emergency buttons are not active and the infrared sensor is not blocked.

Press the START/STOP button, a 3-second countdown will appear on the main display. Then the stepmill starts at 1 speed level.

Press the LEVEL button, speed selection buttons, or numeric keypad to adjust the speed.

The program adds all values, the speed is set by the user.

### COUNTDOWN MODE

#### Time countdown

In standby mode, press TIME COUNTDOWN to set the time countdown.

The TIME display will show "15:00" that will flash. Use the LEVEL, +/- buttons, or the numeric keypad to adjust the value in the range 5:00 – 99:00.

#### Height countdown

In standby mode, press HEIGHT COUNTDOWN to start the height countdown.

The HEIGHT display will show a value of "10.0" that will flash. Use the LEVEL, +/- buttons or the numeric keypad to adjust the value in the range 5.0 - 999.

#### Calorie countdown

In standby mode, press CALORIES COUNTDOWN to start the altitude countdown.

The CALORIES display will show a value of "50.0" which will flash. Use the LEVEL, +/- buttons or the numeric keypad to adjust the value in the range of 10.0 - 999.

To start the program, press START/PAUSE, the program will start after a 3-second countdown. Use the LEVEL, +/- buttons or the numeric keypad to adjust the value in the range of 10.0 - 999.

### PROGRAMS (P1-P36)

The console includes 36 preset programs P1 – P36. Press the PROG button to select a program, the program is shown in the HEIGHT/PROG display.

The TIME display will show the time "10:00".

Use the LEVEL, +/- buttons or the numeric keypad to set the length of the program.

To start the program, press START/PAUSE, the program will start at the lowest speed and gradually increase to the value of the first segment.

Each program is divided into 20 segments, the length of each segment: set time/20.

As you move to the next segment, you will hear a beep.

The user can adjust the current speed of the segment according to the corresponding buttons, when moving to the next segment of the program, the speed is automatically adjusted to the preset value of the program.

When the program is finished, an audible signal will sound, the speed will gradually slow down until it stops completely. The main display will show END. The stairs will switch to standby mode after 5 seconds after the end of the program.

| Seg<br>Prog | S1 | S2 | S3 | S4 | S5 | S6 | S7 | S8 | S9 | S10 | S11 | S12 | S13 | S14 | S15 | S16 | S17 | S18 | S19 | S20 |
|-------------|----|----|----|----|----|----|----|----|----|-----|-----|-----|-----|-----|-----|-----|-----|-----|-----|-----|
| P1          | 4  | 5  | 5  | 6  | 6  | 7  | 7  | 7  | 7  | 7   | 7   | 7   | 7   | 7   | 7   | 6   | 6   | 5   | 5   | 1   |
| P2          | 4  | 5  | 5  | 6  | 7  | 7  | 10 | 7  | 10 | 10  | 10  | 7   | 10  | 10  | 7   | 7   | 6   | 5   | 5   | 1   |
| P3          | 4  | 5  | 5  | 6  | 7  | 7  | 10 | 10 | 7  | 10  | 10  | 10  | 10  | 7   | 7   | 7   | 6   | 5   | 5   | 1   |
| P4          | 4  | 5  | 5  | 6  | 6  | 9  | 9  | 9  | 9  | 9   | 9   | 12  | 9   | 9   | 9   | 6   | 6   | 5   | 5   | 1   |
| P5          | 4  | 5  | 5  | 6  | 7  | 9  | 9  | 9  | 9  | 12  | 9   | 9   | 9   | 9   | 9   | 7   | 6   | 5   | 5   | 1   |
| P6          | 4  | 5  | 5  | 7  | 7  | 9  | 9  | 12 | 12 | 12  | 12  | 9   | 9   | 9   | 9   | 9   | 7   | 5   | 5   | 1   |
| P7          | 4  | 5  | 6  | 8  | 8  | 11 | 11 | 11 | 11 | 11  | 11  | 11  | 11  | 11  | 11  | 11  | 8   | 6   | 6   | 2   |
| P8          | 4  | 5  | 5  | 7  | 7  | 10 | 10 | 10 | 10 | 12  | 12  | 12  | 12  | 12  | 12  | 12  | 12  | 12  | 11  | 5   |
| P9          | 4  | 5  | 5  | 8  | 8  | 11 | 11 | 11 | 9  | 11  | 11  | 11  | 11  | 11  | 11  | 11  | 8   | 5   | 5   | 2   |
| P10         | 4  | 5  | 5  | 7  | 7  | 9  | 5  | 7  | 7  | 9   | 5   | 7   | 7   | 9   | 5   | 7   | 7   | 9   | 7   | 3   |
| P11         | 4  | 6  | 6  | 8  | 8  | 11 | 6  | 8  | 8  | 11  | 6   | 8   | 8   | 11  | 6   | 8   | 8   | 11  | 6   | 1   |
| P12         | 4  | 6  | 6  | 9  | 12 | 12 | 6  | 9  | 12 | 12  | 6   | 9   | 12  | 12  | 6   | 9   | 12  | 12  | 9   | 4   |
| P13         | 4  | 9  | 4  | 9  | 4  | 9  | 4  | 9  | 4  | 9   | 4   | 9   | 4   | 9   | 4   | 9   | 4   | 9   | 4   | 9   |
| P14         | 4  | 5  | 5  | 8  | 11 | 11 | 5  | 8  | 11 | 11  | 5   | 8   | 11  | 11  | 5   | 8   | 11  | 11  | 8   | 3   |
| P15         | 4  | 6  | 9  | 9  | 9  | 6  | 9  | 9  | 9  | 6   | 9   | 9   | 9   | 6   | 9   | 9   | 9   | 6   | 4   | 2   |
| P16         | 4  | 6  | 6  | 11 | 6  | 11 | 6  | 11 | 6  | 11  | 6   | 11  | 6   | 11  | 6   | 11  | 6   | 11  | 6   | 9   |
| P17         | 4  | 4  | 4  | 6  | 8  | 8  | 11 | 11 | 11 | 4   | 6   | 8   | 8   | 11  | 11  | 11  | 8   | 4   | 4   | 2   |
| P18         | 5  | 8  | 5  | 8  | 8  | 5  | 8  | 8  | 5  | 8   | 8   | 5   | 8   | 8   | 5   | 8   | 8   | 4   | 4   | 2   |
| P19         | 4  | 9  | 4  | 9  | 4  | 9  | 4  | 9  | 4  | 9   | 4   | 9   | 4   | 9   | 4   | 9   | 4   | 9   | 4   | 2   |
| P20         | 4  | 12 | 4  | 12 | 4  | 12 | 4  | 12 | 4  | 12  | 4   | 12  | 4   | 12  | 4   | 12  | 4   | 12  | 4   | 4   |
| P21         | 4  | 8  | 4  | 8  | 11 | 4  | 8  | 11 | 4  | 8   | 11  | 4   | 8   | 11  | 4   | 8   | 11  | 4   | 8   | 2   |
| P22         | 6  | 8  | 11 | 8  | 4  | 11 | 8  | 4  | 11 | 8   | 4   | 11  | 8   | 4   | 11  | 8   | 4   | 4   | 6   | 2   |
| P23         | 6  | 8  | 11 | 8  | 8  | 4  | 11 | 8  | 8  | 4   | 11  | 8   | 8   | 4   | 11  | 8   | 8   | 4   | 4   | 2   |
| P24         | 6  | 8  | 11 | 8  | 6  | 11 | 8  | 6  | 11 | 8   | 6   | 11  | 8   | 6   | 11  | 8   | 6   | 4   | 6   | 2   |
| P25         | 4  | 6  | 5  | 6  | 5  | 7  | 6  | 4  | 7  | 4   | 8   | 4   | 9   | 4   | 10  | 5   | 9   | 5   | 11  | 3   |
| P26         | 4  | 7  | 6  | 8  | 6  | 8  | 6  | 4  | 6  | 5   | 5   | 8   | 7   | 9   | 7   | 9   | 7   | 5   | 7   | 2   |
| P27         | 4  | 7  | 6  | 7  | 6  | 7  | 6  | 4  | 5  | 5   | 5   | 8   | 7   | 8   | 7   | 8   | 7   | 5   | 6   | 2   |
| P28         | 4  | 8  | 9  | 6  | 6  | 9  | 6  | 4  | 6  | 5   | 5   | 9   | 10  | 7   | 7   | 10  | 7   | 5   | 7   | 2   |
| P29         | 4  | 6  | 8  | 10 | 9  | 10 | 8  | 4  | 5  | 5   | 5   | 7   | 9   | 11  | 10  | 11  | 9   | 5   | 6   | 2   |
| P30         | 4  | 6  | 7  | 7  | 8  | 7  | 8  | 5  | 5  | 5   | 5   | 7   | 8   | 8   | 9   | 8   | 9   | 6   | 6   | 2   |
| P31         | 5  | 8  | 9  | 7  | 10 | 7  | 11 | 8  | 6  | 4   | 6   | 9   | 10  | 8   | 11  | 8   | 11  | 9   | 6   | 3   |
| P32         | 4  | 7  | 8  | 6  | 9  | 7  | 8  | 7  | 5  | 5   | 5   | 8   | 9   | 7   | 10  | 8   | 9   | 8   | 6   | 3   |
| P33         | 4  | 10 | 8  | 6  | 7  | 11 | 9  | 7  | 6  | 6   | 5   | 11  | 9   | 7   | 8   | 11  | 10  | 8   | 7   | 3   |
| P34         | 4  | 5  | 7  | 5  | 5  | 7  | 5  | 8  | 5  | 6   | 5   | 6   | 8   | 6   | 6   | 8   | 6   | 9   | 6   | 3   |
| P35         | 4  | 7  | 10 | 11 | 8  | 11 | 7  | 5  | 4  | 5   | 5   | 8   | 11  | 11  | 9   | 11  | 8   | 6   | 5   | 2   |
| P36         | 4  | 7  | 7  | 6  | 6  | 8  | 6  | 4  | 5  | 7   | 5   | 8   | 8   | 7   | 7   | 9   | 7   | 5   | 6   | 4   |

## CUSTOM PROGRAM

You can set 3 user programs U1 – U3. You must set up all 20 segments.

Press CUSTOM to select the U1 – U3 program. The TIME display will show "10:00" flashing. Use the LEVEL, +/- buttons or the numeric keypad to set the length of the program. Press OK to confirm the duration of the program and go to the speed setting.

The HEIGHT/PROG display will show S01 to indicate the first segment. Use the LEVEL, +/- buttons, or the numeric keypad to adjust the speed of the first segment. Confirm by pressing OK to go to the settings of the next segment. You must set up all 20 segments.

## BMI

Press the MODE button to select the BMI program. The HEIGHT/PROG display will show FAT. Press OK to confirm the program and go to the settings.

F-1: Gender

F-2: Age

F-3: Height

F-4: Weight

F-5: Test result

After setting all the data, it is necessary to grab the heart rate sensors. After 2-3 seconds of gripping the sensors, the result is displayed.

|     |        |             |              |
|-----|--------|-------------|--------------|
| F-1 | Gender | 01 (male)   | 02 (Female)  |
| F-2 | Age    | 10-----99   |              |
| F-3 | Height | 100-200(cm) |              |
| F-4 | Weight | 20-150(kg)  |              |
| F-5 | Result | ≤19         | Malnutrition |
|     | Result | =(20---25)  | Normal       |
|     | Result | =(26---29)  | Overweight   |
|     | Result | ≥30         | Obesity      |

## RANGE OF VALUE DISPLAY

| Parameter         | Initial value | Default value | Setting range | Display range |
|-------------------|---------------|---------------|---------------|---------------|
| Time (min:sec)    | 0:00          | 15:00         | 5:00~99:00    | 0:00~99:59    |
| Speed             | 1             | 1             | 1~25          | 1~25          |
| Number of steps   | 0             | N/A           | N/A           | 0~9999        |
| Height (meters)   | 0.0           | 10.0          | 5.0~999       | 0.0~999       |
| Pulse (beats/min) | P             | N/A           | N/A           | 50~200        |
| Calories (kcal)   | 0.0           | 50.0          | 10.0~999      | 0.0~999       |
| SPM (Speed)       | 0             | N/A           | N/A           | 0~999         |

## EMERGENCY BUTTON

If necessary, it is possible to press the emergency button for immediate shutdown. The stairs stop immediately, the console displays "- -" and a beep. "SAFETY STOP BUTTON ACTIVATED-TWIST EMERGENCY STOP BUTTON TO UNLOCK" is shown in the main display. In this mode, the stairs cannot be controlled. To restart, the emergency button must be turned clockwise.

## STANDBY

After 10 minutes of inactivity, the console switches to power saving mode. Press any button to wake up the console.

## WIRELESS CHARGER (optional)

The wireless charger can be used to charge your devices.

## USB / AUDIO JACK / BLUETOOTH INTERFACE (optional)

USB - can be used to play music files.

AUDIO JACK – can be used to connect headphones

BLUETOOTH – can be used to connect to a smart device and play music. On your smart device, select SYMK.

## SHUTDOWN

You can turn off the stairs using the main switch.

**CAUTION:** If any obstacle is detected by the infrared sensor, the display will show "PRESS ANY BUTTON TO UNLOCK", the calorie display will show E08. To eliminate the error, remove the object or obstacle blocking the sensor and press any button.

## TROUBLESHOOTING

|  |  |   |
|--|--|---|
| My console isn't showing the data  | 1. Not plugged in or no power  | Plug into the mains, check the socket.          |
|  | 2. The power switch is in the off position                                 | Turn the power switch to the lowered position.  |
|  | 3. Damage to the control unit or not powered                               | Replace the control unit.                       |
|  | 4. The console cables are disconnected                                     | Check the console connection or replace cables. |
|  | 5. Damaged console   | Replace the console                             |
| ---or---   | 1. The safety button is active   | Turn clockwise                                  |
|  | 2. The safety button cable is disconnected                                 | Check your connection                           |
|  | 3. The safety button is damaged  | Replace the button                              |
| E01<br>Console signal not received by the control unit<br><br>E02<br>The signal of the control unit is not received by the console | 1. Console cables are misconnected or not plugged in                       | Reconnect the cables                            |
|  | 2. The console cables are damaged or there is a short circuit/open circuit | Replace the cables                              |
|  | 3. Console short circuit   | Replace your console                            |
|  | 4. Short circuit of the drive  | Replace the drive                               |
| E08<br>Infrared sensor error   | 1. Infrared sensor detects obstacle  | Remove the obstacle                             |
|  | 2. Damage to the infrared sensor   | Replace the sensor                              |
|  | 3. Damage to the control unit  | Replace the control unit                        |
| E48<br>Speed sensor signal error   | 1. Speed detection cable not plugged in or sensor damaged                  | Reconnect the cable, replace the sensor         |
|  | 2. Short circuit of the drive sensor                                       | Replace the drive                               |

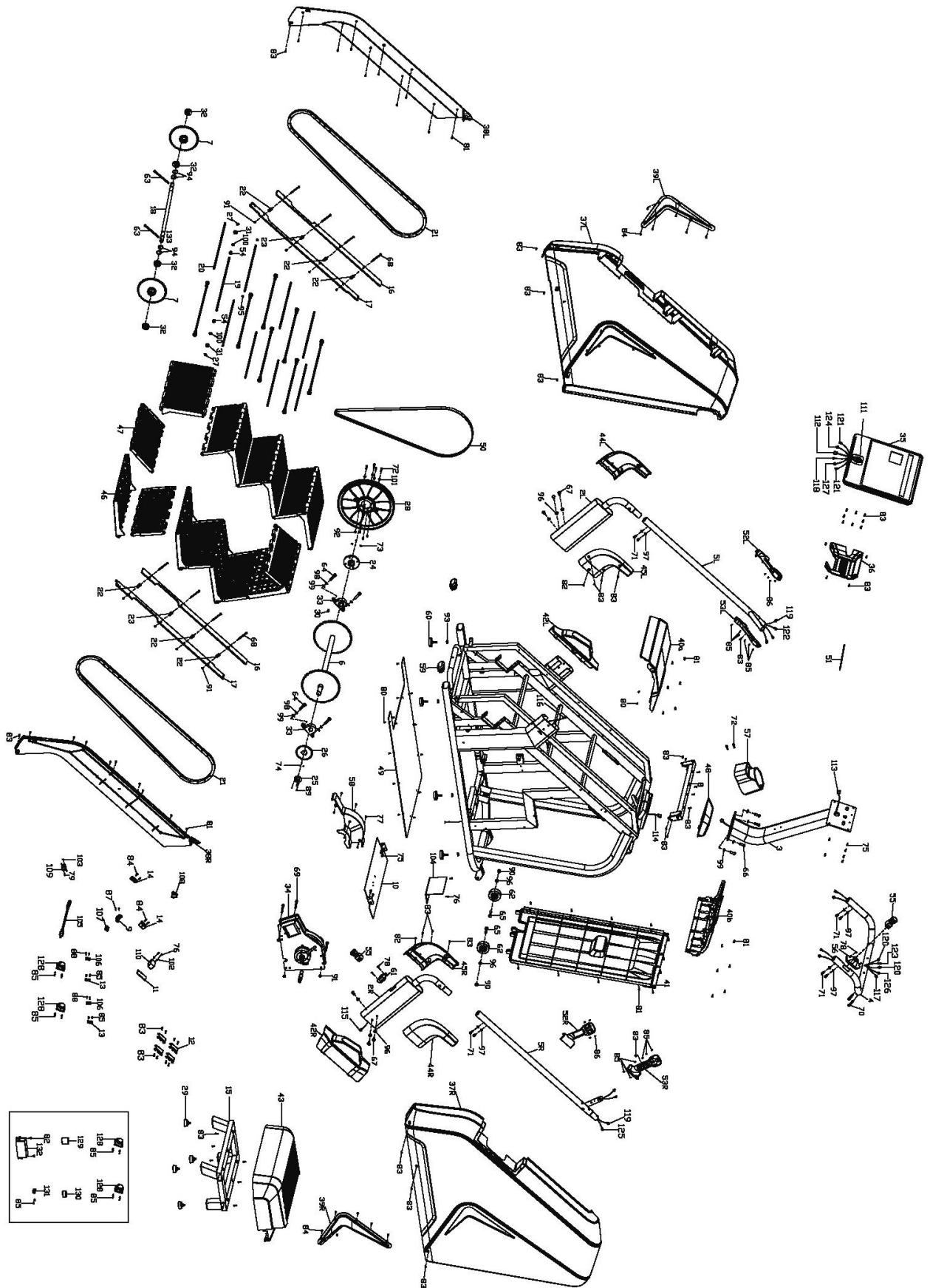


## PARTS LIST

| No.  | Name                              | Qty. | No.   | Name                         | Qty. |
|------|-----------------------------------|------|-------|------------------------------|------|
| 1    | Main frame                        | 1    | 29    | Foot pad                     | 4    |
| 2L/R | Handle base                       | 1/1  | 30    | Flat button                  | 1    |
| 3    | Console post                      | 1    | 31    | Bearing 608Z                 | 16   |
| 4    | Rear handle                       | 1    | 32    | Bearing 6004                 | 4    |
| 5L/R | Handles                           | 1/1  | 33    | KP005 pedestal bearing       | 2    |
| 6    | Front roller                      | 1    | 34    | Flywheel brake system        | 1    |
| 7    | Rear gear                         | 2    | 35    | Console                      | 1    |
| 8    | Upper cover                       | 1    | 36    | Rear console cover           | 1    |
| 9    | Optical sensor rack               | 1    | 37L/R | Mainframe cover              | 1pr. |
| 10   | Board                             | 1    | 38L/R | Inner mainframe cover        | 1pr. |
| 11   | Switch board                      | 1    | 39L/R | L&R decorative cover         | 1pr. |
| 12   | Outer cover fixer                 | 4    | 40a/b | Top mainframe cover          | 1/1  |
| 13   | Infrared holder                   | 2    | 41    | Rear cover                   | 1    |
| 14   | Upright cover fixer               | 2    | 42L/R | Handrail upright cover       | 1pr. |
| 15   | Rear step                         | 1    | 43    | Stepper                      | 1    |
| 16   | Rail                              | 2    | 44L/R | Exterior handrail cover      | 1/1  |
| 17   | Rail 2                            | 2    | 45L/R | Interior handrail cover      | 1/1  |
| 18   | Rear roller shaft                 | 1    | 46    | Step 1                       | 8    |
| 19   | Bearing connecting shaft          | 8    | 47    | Step 2                       | 8    |
| 20   | Step connecting shaft             | 8    | 48    | Console mast cover           | 1    |
| 21   | Chain                             | 2    | 49    | Mainframe bottom board       | 1    |
| 22   | Support sleeve 1                  | 8    | 50    | Belt                         | 1    |
| 23   | Support sleeve 2                  | 2    | 51    | Mobile phone pad             | 1    |
| 24   | Front roller pulley axle sleeve   | 1    | 52L/R | Handgrip upper cover         | 1/1  |
| 25   | Front roller sensor axle sleeve   | 1    | 53L/R | Handgrip lower cover         | 1/1  |
| 26   | Front roller optical sensor brake | 1    | 54    | Spacer for stepper           | 16   |
| 27   | Clip                              | 16   | 55    | Emergency stop knob          | 2    |
| 28   | Belt pulley                       | 1    | 56    | Handle emergency stop base   | 1    |
| No.  | Name                              | Qty. | No.   | Name                         | Qty. |
| 57   | Bottle holder                     | 1    | 81    | Self-tapping screw ST4*16    | 40   |
| 58   | Flywheel cover                    | 1    | 82    | Cross Screw with M4*8 Washer | 4    |
| 59   | End cap                           | 2    | 83    | Self-tapping screw ST4.0*16  | 52   |
| 60   | Adjustment pad                    | 4    | 84    | Self-tapping screw ST4.0*8   | 16   |
| 61   | Emergency button base 2           | 1    | 85    | Self Tapping Screw ST2.9*9.5 | 26   |
| 62   | Transport wheel                   | 2    | 86    | Self-tapping screw ST2.2*8   | 8    |
| 63   | Allen screw M10*120               | 2    | 87    | Cross Screw M4*10            | 2    |

|            |                               |             |            |   |             |
|------------|-------------------------------|-------------|------------|---|-------------|
| 64         | Allen screw M10*40            | 4           | 88         | Phillips screw M3*15                            | 4           |
| 65         | Hex bolt M10*45               | 2           | 89         | Cross Screw M3*8                                | 3           |
| 66         | Allen screw M10*30            | 4           | 90         | Nylon Nut M10                                   | 2           |
| 67         | Allen screw M10*20            | 6           | 91         | Nylon nut M8                                    | 11          |
| 68         | Allen screw M8*110            | 8           | 92         | Nylon nut M6                                    | 4           |
| 69         | Allen screw M8*75             | 3           | 93         | Nut M10*5                                       | 4           |
| 70         | Allen screw M8*40             | 2           | 94         | Retaining Ring Φ20                              | 4           |
| 71         | Headless Screw M8*15          | 8           | 95         | Retaining ring Φ 7                              | 16          |
| 72         | Allen screw M6*25             | 6           | 96         | Serrated washer Φ10*1.2                         | 8           |
| 73         | Headless Screw M5*10          | 3           | 97         | Serrated washer Φ 8*1.2                         | 8           |
| 74         | Headless M4*5 Screw           | 3           | 98         | Spring washer Φ 10                              | 4           |
| 75         | Cross Screw with Washer M5*15 | 4           | 99         | Flat washer Φ10                                 | 8           |
| 76         | Cross Screw with M4*15 Washer | 8           | 100        | Flat washer Φ 8                                 | 16          |
| 77         | Cross Screw M5*8              | 6           | 101        | Flat washer Φ 6                                 | 4           |
| 78         | Cross Screw M4*10             | 4           | 102        | Flat washer Φ 4                                 | 2           |
| 79         | Phillips screw M3*15          | 2           | 103        | Nut M3  | 2           |
| 80         | Cross Screw with Washer M5*11 | 14          | 104        | Control unit                                    | 1           |
| <b>No.</b> | <b>Name</b>                   | <b>Qty.</b> | <b>No.</b> | <b>Name</b>                                     | <b>Qty.</b> |
| 105        | Power cord                    | 1           | 119        | Lower pulse cable                               | 2           |
| 106        | Infrared sensor               | 2           | 120        | Pulse extension cable                           | 2           |
| 107        | Optical sensor                | 1           | 121        | Top pulse cable                                 | 2           |
| 108        | Switch                        | 1           | 122        | Bottom cable of the START/STOP quick button     | 1           |
| 109        | Socket                        | 1           | 123        | START/STOP Quick Control Button Extension Cable | 1           |
| 110        | Near-field sensor             | 1           | 124        | Top cable of the START/STOP quick button        | 1           |
| 111        | Wireless Charging Module      | 1           | 125        | Bottom cable of the quick control button SPEED  | 1           |
| 112        | Top cable of the console      | 1           | 126        | Quick Control Button Extension Cable SPEED      | 1           |
| 113        | Console extension cable       | 1           | 127        | Top cable of the quick control button SPEED     | 1           |
| 114        | Bottom console cable          | 1           | 128        | Speaker (optional)                              | 2           |
| 115        | Bottom switch cable 2         | 1           | 129        | Magnetic ring (optional)                        | 1           |
| 116        | Top switch cable 2            | 1           | 130        | Magnetic ring (optional)                        | 1           |
| 117        | Bottom switch cable 1         | 1           | 131        | USB/audio jack (optional)                       | 1           |
| 118        | Top switch cable 1            | 1           | 132        | Inductor and filter (optional)                  | 1           |

# DRAWING



## ENVIRONMENT PROTECTION

After the product lifespan expired or if the possible repairing is uneconomic, dispose it according to the local laws and environmentally friendly in the nearest scrapyard.

By proper disposal you will protect the environment and natural sources. Moreover, you can help protect human health. If you are not sure in correct disposing, ask local authorities to avoid law violation or sanctions.

Don't put the batteries among house waste but hand them in to the recycling place.



## TERMS AND CONDITIONS OF WARRANTY, WARRANTY CLAIMS

### General Conditions of Warranty and Definition of Terms

All Warranty Conditions stated here under determine Warranty Coverage and Warranty Claim Procedure. Conditions of Warranty and Warranty Claims are governed by Act No. 89/2012 Coll. Civil Code, and Act No. 634/1992 Coll., Consumer Protection, as amended, also in cases that are not specified by these Warranty rules.

The seller is SEVEN SPORT s.r.o. with its registered office in Strakonická street 1151/2c, Prague 150 00, Company Registration Number: 26847264, registered in the Trade Register at Regional Court in Prague, Section C, Insert No. 116888.

According to valid legal regulations, it depends whether the Buyer is the End Customer or not.

"The Buyer who is the End Customer" or simply the "End Customer" is the legal entity that does not conclude and execute the Contract in order to run or promote his own trade or business activities.

"The Buyer who is not the End Customer" is a Businessman that buys Goods or uses services for the purpose of using the Goods or services for his own business activities. The Buyer conforms to the General Purchase Agreement and business conditions.

These Conditions of Warranty and Warranty Claims are an integral part of every Purchase Agreement made between the Seller and the Buyer. All Warranty Conditions are valid and binding, unless otherwise specified in the Purchase Agreement, in the Amendment to this Contract or in another written agreement.

### Warranty Conditions

#### Warranty Period

The Seller provides the Buyer a 24 months Warranty for Goods Quality, unless otherwise specified in the Certificate of Warranty, Invoice, Bill of Delivery or other documents related to the Goods. The legal warranty period provided to the Consumer is not affected.

By the Warranty for Goods Quality, the Seller guarantees that the delivered Goods shall be, for a certain period of time, suitable for regular or contracted use, and that the Goods shall maintain its regular or contracted features.

#### Batteries

6-month battery warranty – we guarantee that battery's nominal capacity does not fall below 70% of its total capacity within 6 months of the product's sale.

#### The Warranty does not cover defects resulting from (if applicable):

- User's fault, i.e. product damage caused by unqualified repair work, improper assembly, insufficient insertion of seat post into frame, insufficient tightening of pedals and cranks
- Improper maintenance
- Mechanical damage

- Regular use (e.g. wearing out of rubber and plastic parts, moving mechanisms, joints, wear of brake pads/blocks, chain, tires, cassette/multi wheel etc.)
- Unavoidable event, natural disaster
- Adjustments made by unqualified person
- Improper maintenance, improper placement, damages caused by low or high temperature, water, inappropriate pressure, shocks, intentional changes in design or construction etc.

### Warranty Claim Procedure

The Buyer is obliged to check the Goods delivered by the Seller immediately after taking the responsibility for the Goods and its damages, i.e. immediately after its delivery. The Buyer must check the Goods so that he discovers all the defects that can be discovered by such check.

When making a Warranty Claim the Buyer is obliged, on request of the Seller, to prove the purchase and validity of the claim by the Invoice or Bill of Delivery that includes the product's serial number, or eventually by the documents without the serial number. If the Buyer does not prove the validity of the Warranty Claim by these documents, the Seller has the right to reject the Warranty Claim.

If the Buyer gives notice of a defect that is not covered by the Warranty (e.g. in the case that the Warranty Conditions were not fulfilled or in the case of reporting the defect by mistake etc.), the Seller is eligible to require a compensation for all the costs arising from the repair. The cost shall be calculated according to the valid price list of services and transport costs.

If the Seller finds out (by testing) that the product is not damaged, the Warranty Claim is not accepted. The Seller reserves the right to claim a compensation for costs arising from the false Warranty Claim.

In case the Buyer makes a claim about the Goods that is legally covered by the Warranty provided by the Seller, the Seller shall fix the reported defects by means of repair or by the exchange of the damaged part or product for a new one. Based on the agreement of the Buyer, the Seller has the right to exchange the defected Goods for a fully compatible Goods of the same or better technical characteristics. The Seller is entitled to choose the form of the Warranty Claim Procedures described in this paragraph.

The Seller shall settle the Warranty Claim within 30 days after the delivery of the defective Goods, unless a longer period has been agreed upon. The day when the repaired or exchanged Goods is handed over to the Buyer is considered to be the day of the Warranty Claim settlement. When the Seller is not able to settle the Warranty Claim within the agreed period due to the specific nature of the Goods defect, he and the Buyer shall make an agreement about an alternative solution. In case such agreement is not made, the Seller is obliged to provide the Buyer with a financial compensation in the form of a refund.

#### CZSEVEN SPORT s.r.o.

Registered Office: Strakonická 1151/2c, Praha 5, 150 00,  
 ČRHeadquarters: Dělnická 957, Vítkov, 749 01Warranty &  
 Service: Čermenská 486, Vítkov 749 01

CRN: 26847264VAT ID:CZ26847264

Phone: +420 556 300 970E-mail:  
 eshop@insportline.cz  
 reklamace@insportline.cz  
 servis@insportline.cz

Web: www.inSPORTline.cz

#### SKStores inSPORTline SK, s.r.o.

Headquarters, warranty & service center: Električná  
 6471, Trenčín 911 01, SK

CRN: 46259317VAT ID:SK2023299729

Phone: +421(0) 917 700 098E-mail:  
 objednavky@insportline.sk  
 reklamacie@insportline.sk  
 servis@insportline.sk

Web: www.inSPORTline.sk

### About shipping

