



USER MANUAL – EN

IN 28940 Portable Cold Water Immersion Tub inSPORTline FrostPeace



SevenSport s.r.o. reserves the right to make any changes and improvements to its product without prior notice. Visit our website www.insportline.eu where you will find the latest version of the manual.

SAFETY INSTRUCTIONS

- Please read the manual before use and keep it for future reference.
- The product is made of environmentally friendly materials.
- In cold environments, warm the product with warm water before inflating.
- The water level must not be higher than 2/3 of the total volume.
- We recommend filling and draining the water regularly to avoid shortening the lifespan.
- We recommend using it only in places where there is a suitable water drainage system.
- Protect against sharp objects.
- Do not leave children or pets unattended. There is a risk of drowning.
- Any maintenance and assembly may only be carried out by an adult.
- Always place the product in a well-ventilated room.
- If you feel nausea, dizziness, chest pressure, etc., immediately stop using the product and contact a doctor.
- We recommend taking short breaks during use.
- Not suitable for: people suffering from cardiovascular disease, high blood pressure, hemophilia, allergic to plastic products, people with reduced motor function, cancer patients, pregnant or menstruating women. If you have any health problems, we recommend that you consult your doctor before use.
- Use a hand or foot pump to inflate, do not use a compressor.
- Recommended water temperature from 11 to 15 °C.
- Recommended time of use 15 – 20 min. If you feel nauseous, leave the tub immediately.
- Water temperature: from -22°C to 55°C
- Maximum capacity: 380 l
- Recommended capacity: 250 – 320 l

PARTS LIST

1. Aluminum frame, 4x	7. Joint C, 8x
2. Aluminum hoop, 4x	8. PVC frame, 12x
3. Drain valve with gasket, 4x	9. Outer tub, 1x
4. Laminate rod with silicone end, 3x	10. Insulation lid, 1x
5. Joint A, 8x	11. Drain hose, 1x
6. Joint B, 8x	12. Inner tub, 1x

PRODUCT DESCRIPTION



Aluminum hoop, 4x



Joint C, 8x



Drain hose, 1x



PVC frame, 4x



Drain valve with gasket, 2x



Laminate rod with silicone end, 3x



Inner tub, 1x



Insulation cover, 1x



Outer tub, 1x



Done assembly

ASSEMBLY



Remove the outer part of the tub from the packaging and unfold it.



Connect the hoops using the C-joints. Push the hoops through the top of the outer tub. Make sure the C-joint part is facing down.



Connect the hoops using C-joints. Push the hoops through the bottom of the outer tub. Make sure the C-joint part is facing up. Using two PVC frames, connect the two hoops using C-joints.

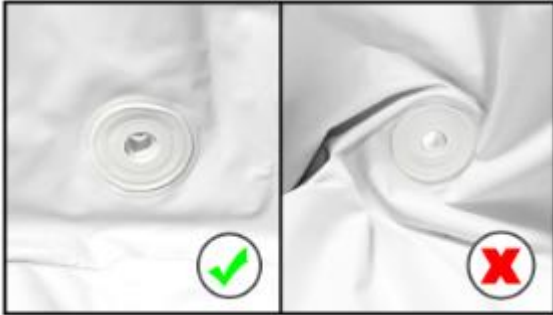
Repeat for the other side.



Cover the bottom of the frame. Pull the excess fabric from the outside of the tub over the top of the frame.



Pull out the inner part of the tub and attach it to the outer part of the tub. Connect the parts using Velcro, first the lower valve, then the upper one.



Make sure the fabric around the valves is smoothed out. Pull the inside of the tub over the edge.



Wrap Teflon tape around the thread. Then attach the valve. Tub assembly is done.



Prepare the lid from the package.



Attach one side of the laminate rod to the far eyelet of the lid.



Pull the strap together and attach the second section of the laminate pole. Repeat for all three poles.



Thread the strap through the eyelet and pull so that the laminate rod is slightly bent. Secure with Velcro.



Repeat for all straps. The center laminate bar should be bent more than the bars on the sides. If the laminate bars are bent, this will prevent the lid from getting wet.



Anti water accumulation



Normal



To secure the windproof lid: Pull out the middle Velcro strap and thread it through the eyelet and secure with Velcro.



Windproof lid.

ENVIRONMENT PROTECTION

After the product lifespan expired or if the possible repairing is uneconomic, dispose it according to the local laws and environmentally friendly in the nearest scrapyard.

By proper disposal you will protect the environment and natural sources. Moreover, you can help protect human health. If you are not sure in correct disposing, ask local authorities to avoid law violation or sanctions.

TERMS AND CONDITIONS OF WARRANTY, WARRANTY CLAIMS

General Conditions of Warranty and Definition of Terms

All Warranty Conditions stated here under determine Warranty Coverage and Warranty Claim Procedure. Conditions of Warranty and Warranty Claims are governed by Act No. 89/2012 Coll. Civil Code, and Act No. 634/1992 Coll., Consumer Protection, as amended, also in cases that are not specified by these Warranty rules.

The seller is SEVEN SPORT s.r.o. with its registered office in Kutnohorská 531, Štěrboholy Retail Park, 109 00, Praha 10, ČR, Company Registration Number: 26847264, registered in the Trade Register at Regional Court in Prague, Section C, Insert No. 116888.

According to valid legal regulations it depends whether the Buyer is the End Customer or not.

“The Buyer who is the End Customer” or simply the “End Customer” is the legal entity that does not conclude and execute the Contract in order to run or promote his own trade or business activities.

“The Buyer who is not the End Customer” is a Businessman that buys Goods or uses services for the purpose of using the Goods or services for his own business activities. The Buyer conforms to the General Purchase Agreement and business conditions.

These Conditions of Warranty and Warranty Claims are an integral part of every Purchase Agreement made between the Seller and the Buyer. All Warranty Conditions are valid and binding, unless otherwise specified in the Purchase Agreement, in the Amendment to this Contract or in another written agreement.

Warranty Conditions

Warranty Period

The Seller provides the Buyer a 24 months Warranty for Goods Quality, unless otherwise specified in the Certificate of Warranty, Invoice, Bill of Delivery or other documents related to the Goods. The legal warranty period provided to the Consumer is not affected.

By the Warranty for Goods Quality, the Seller guarantees that the delivered Goods shall be, for a certain period of time, suitable for regular or contracted use, and that the Goods shall maintain its regular or contracted features.

Batteries

6-month battery warranty – we guarantee that battery's nominal capacity does not fall below 70% of its total capacity within 6 months of the product's sale.

The Warranty does not cover defects resulting from (if applicable):

- User's fault, i.e. product damage caused by unqualified repair work, improper assembly, insufficient insertion of seat post into frame, insufficient tightening of pedals and cranks
- Improper maintenance
- Mechanical damages
- Regular use (e.g. wearing out of rubber and plastic parts, moving mechanisms, joints, wear of brake pads/blocks, chain, tires, cassette/multi wheel etc.)
- Unavoidable event, natural disaster
- Adjustments made by unqualified person

- Improper maintenance, improper placement, damages caused by low or high temperature, water, inappropriate pressure, shocks, intentional changes in design or construction etc.

Warranty Claim Procedure

The Buyer is obliged to check the Goods delivered by the Seller immediately after taking the responsibility for the Goods and its damages, i.e. immediately after its delivery. The Buyer must check the Goods so that he discovers all the defects that can be discovered by such check.

When making a Warranty Claim the Buyer is obliged, on request of the Seller, to prove the purchase and validity of the claim by the Invoice or Bill of Delivery that includes the product's serial number, or eventually by the documents without the serial number. If the Buyer does not prove the validity of the Warranty Claim by these documents, the Seller has the right to reject the Warranty Claim.

If the Buyer gives notice of a defect that is not covered by the Warranty (e.g. in the case that the Warranty Conditions were not fulfilled or in the case of reporting the defect by mistake etc.), the Seller is eligible to require a compensation for all the costs arising from the repair. The cost shall be calculated according to the valid price list of services and transport costs.

If the Seller finds out (by testing) that the product is not damaged, the Warranty Claim is not accepted. The Seller reserves the right to claim a compensation for costs arising from the false Warranty Claim.

In case the Buyer makes a claim about the Goods that is legally covered by the Warranty provided by the Seller, the Seller shall fix the reported defects by means of repair or by the exchange of the damaged part or product for a new one. Based on the agreement of the Buyer, the Seller has the right to exchange the defected Goods for a fully compatible Goods of the same or better technical characteristics. The Seller is entitled to choose the form of the Warranty Claim Procedures described in this paragraph.

The Seller shall settle the Warranty Claim within 30 days after the delivery of the defective Goods, unless a longer period has been agreed upon. The day when the repaired or exchanged Goods is handed over to the Buyer is considered to be the day of the Warranty Claim settlement. When the Seller is not able to settle the Warranty Claim within the agreed period due to the specific nature of the Goods defect, he and the Buyer shall make an agreement about an alternative solution. In case such agreement is not made, the Seller is obliged to provide the Buyer with a financial compensation in the form of a refund.

CZ SEVEN SPORT s.r.o.

Registered Office: Kutnohorská 531, Štěrboholy Retail Park,
109 00, Praha 10, ČR

Headquarters: Dělnická 957, Vítkov, 749 01
Warranty & Service: Čermenská 486, Vítkov 749 01

CRN: 26847264
VAT ID: CZ26847264

Phone: +420 556 300 970
E-mail: eshop@insportline.cz
reklamace@insportline.cz
servis@insportline.cz

Web: www.inSPORTline.cz

SK Stores inSPORTline SK, s.r.o.

Headquarters, warranty & service center: Električná 6471,
Trenčín 911 01, SK

CRN: 46259317
VAT ID: SK2023299729

Phone: +421(0) 917 700 098
E-mail: objednavky@insportline.sk
reklamacie@insportline.sk
servis@insportline.sk

Web: www.inSPORTline.sk

About shipping

