



USER MANUAL – EN

IN 16084 Electric Longboard WORKER Smuthrider

IN 16087 Electric Longboard WORKER Tribequest



CONTENTS

SAFETY INSTRUCTIONS..... 3
USAGE INSTRUCTIONS..... 5
SPECIFICATIONS..... 5
PRODUCT DESCRIPTION 6
OPERATION INSTRUCTIONS 6
MOTOR PARTS 7
REMOTE CONTROLLER..... 7
CHARGING INSTRUCTIONS 8
CONNECTION..... 8
STORING AND MAINTENANCE 9
ENVIRONMENT PROTECTION 9
TERMS AND CONDITIONS OF WARRANTY, WARRANTY CLAIMS..... 10

THANK YOU FOR PURCHASING THIS PRODUCT!

Thank you for purchasing this product. It is a remote controlled compact vehicle with a battery. To use it properly and safely, read this manual carefully before first using and retain it for future reference.

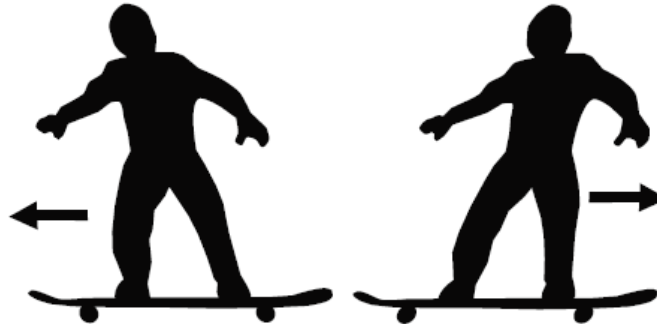
SAFETY INSTRUCTIONS

- **WARNING:** Using this product can be dangerous. Pay attention and read this manual carefully.
- According to the standard: **EN13613**
- **CLASS:**
 - **Class A** – suitable for users with weight between 20-100 kg
 - **Max. user weight: 100 kg**
- All the materials have been carefully chosen regarding to the highest quality and to assure the highest comfort during intended using. Improper using can result in a damage or in faster and excessive wearing. Use it only as intended.
- Maintain it only according to this manual to prolong its lifespan.
- Beginners and non-experienced users should be supervised during using.
- Keep it away from children. Children under 12 years of age may use it only under adult supervision.
- Have your speed under control and always be ready to stop safely. Never exceed allowed speed limits and make sure you have enough free space for safe braking.
- Don't jump with it and keep correct stance while using it. Only one person may use it at time.
- Use this product only on a flat, clean and dry surface away from traffic and pedestrians. Avoid public roads. Never use it near water or in places with higher air humidity.
- Don't violate local laws and regulations while using it. Be familiar with all bans and restrictions. If you are not sure, ask local authorities.
- Avoid steep slopes, hills, stairs and narrow places as well. Use it outside a room. Never go on a wet or rough surface.
- Beginners should ask some more-skilled person for help and advice at the initial phase. It is not easy to keep balance. Use it carefully and avoid falling.
- Don't jump off. Get off only if this device has stopped.
- Always wear an approved helmet and protectors of knees, elbows, wrists and shoulders. Wear protective gloves.
- Wear anti-slip sports shoes. The soles should be dry.
- Never use it in water. Water could irreversibly damage electric components. Don't dip it in water or any liquid. Don't use it in rain.
- Don't use it and don't charge it in places with excessive concentration of gas or hazardous substances in air.
- Don't do acrobatics.
- Don't carry items.
- If some sharp edges occur, stop using.

- Check this product before each using. All screws, nuts and quick-release mechanisms should be well tightened. Regularly check bearings, spindles and wheels for damage or wearing. Damaged or worn parts should be replaced immediately. Never use damaged or worn product. Some components can get loosen with time, retighten if necessary.
- Don't do any improper modification or adjustment. Never repair it yourself. Contact an authorized service if necessary.
- Immediately remove all splits or cracks to increase your safety.
- Use it reasonably. Using this product requires some skills and improper using can be dangerous.
- Use it only in suitable terrain. Avoid gravel, sand and oily surface. Don't use it near a swimming pool or near water.
- Don't use it at dusk, at night or in poor visibility conditions.
- Don't accelerate and don't brake too abruptly to avoid fall or skidding. This device features an efficient electromagnetic brake.
- This device is operated by a remote controller with the range of max. 5 m. Use the remote controller to pre-set the speed in two ranges: 0-10 km/h and 0-20 km/h or 0-12 km/h and 0-24 km/h (depending on the model).
- Charge the battery fully and properly, especially before first using. Charge it only in a dry and well ventilated place.
- Never use the battery for a non-intended purpose or for another device. Don't block vents on the charger to avoid fire hazard.
- Charging should be done only by an adult person. Charged device should be kept away from children.
- To gain more skills in proper using, ask a professional coach or an advanced user for advice. Before starting any exercise consult your physician and ask him for advice. It is especially necessary if you have some health complications or if you take a medical care.
- Certified according to following standards: EN 13613, EN 61000-6-3:2007+A1:2011-AC:2012, EN 61000-3-2:2014, EN 61000-3-3:2013, EN 61000-6-1:2007, EN ISO 12100:2010, EN 12184:2014, IEC 62321:2008, IEC 60335-1:2012/A11:2014, EN 62233:2008, AfPS GS 2014:01 PAK

USAGE INSTRUCTIONS

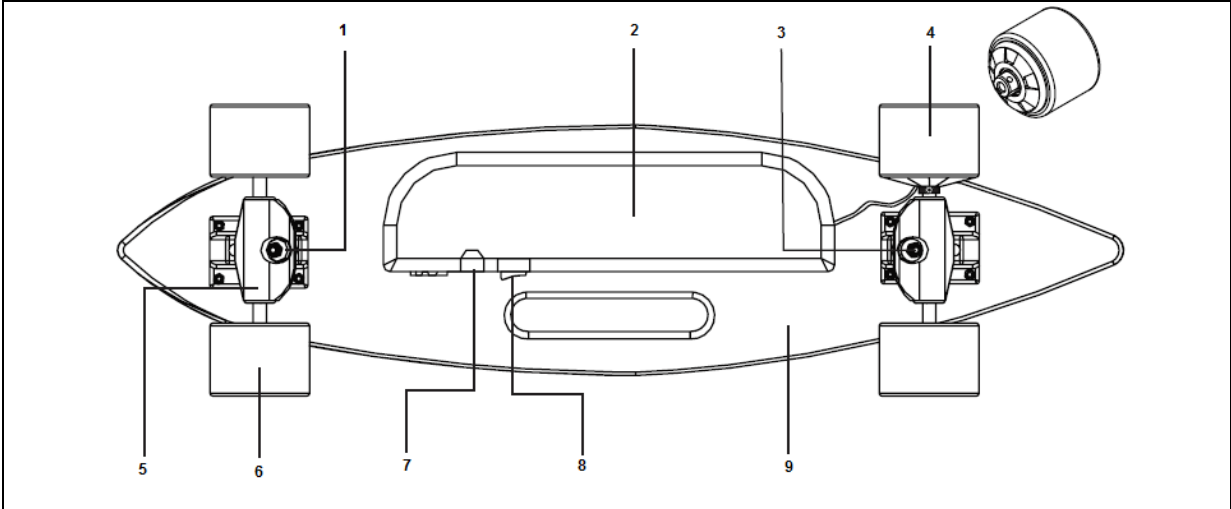
- Keep the space between your feet wide.
- Lower your body.
- Lean forward while starting or increasing your speed.
- Lean backward while braking.



SPECIFICATIONS

	Single Motor	Double Motor
Longboard	IN 16084 Smuthrider	IN 16087 Tribequest
Deck	31"*8" PP	31"*8" Canadian Maple
Max. load capacity	100 kg	100 kg
Cruising speed	Max.: 0-20 km/h Min.: 0-10 km/h	Max.: 0-24 km/h Min.: 0-12 km/h
Distance	12 km	15 km
Real speed and distance depend on loading, weight and road conditions.		
Net. weight	4.8 kg	5.1 kg
Motor	180W Brushless Hub	
Trucks	5" High Performance Aluminium	
Wheels	75*56 mm 85A Supersoft PU	
Controller	2.4G wireless Bluetooth remote control	
Battery	Lithium-Ion Samsung Battery (36V 2.2Ah)	
Charging time	2-3 hours	
Charger		
Input	AC100-240V/50/60Hz Max. 1.6A	
Output	DC42.0V – 1.0A	

PRODUCT DESCRIPTION



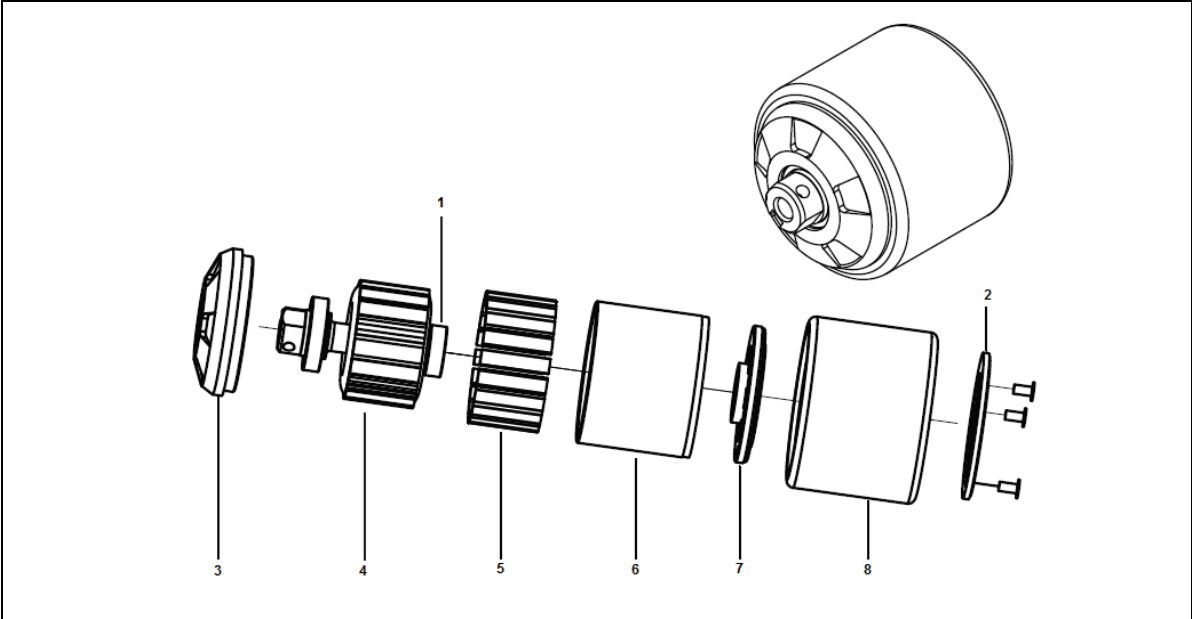
1. Bushing
2. Battery chamber
3. Kingpin
4. Motor
5. Truck
6. Wheel
7. Charging port
8. Power switch
9. Board deck

OPERATION INSTRUCTIONS

1. Make sure that the direction switch is on FORWARD and the power switch is on.
2. Check the speed switch in the controller and make sure it is on the right speed.
3. Push the throttle slowly forward.
4. Keep your body low, lean forward and stand wide.
5. Pull the throttle back for braking, lean back and stay on until this device stops completely.

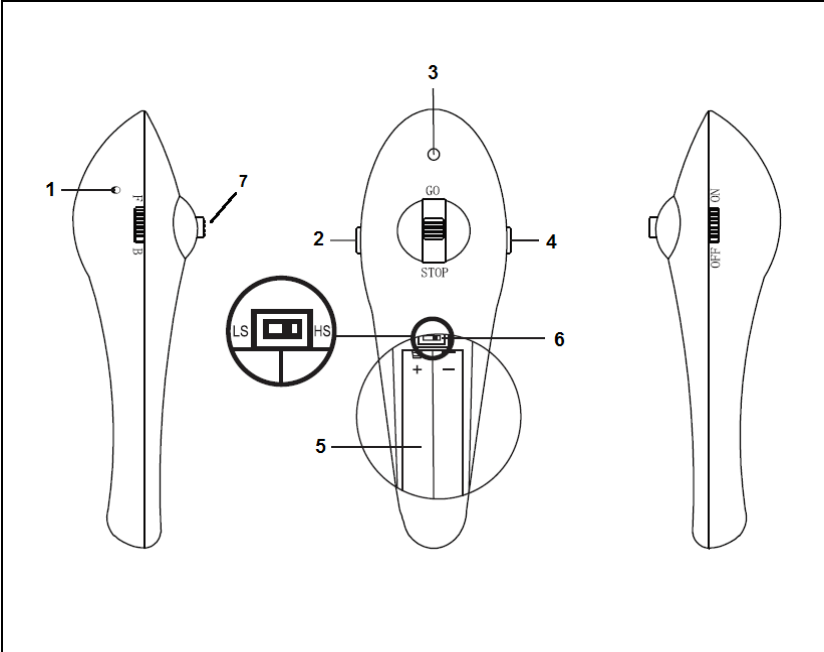
NOTE: Put two 1.2V AAA batteries into the battery compartment of the remote controller.

MOTOR PARTS



1. Bearing
2. Outside hatch
3. Back hatch
4. Stator
5. Magnetic tile
6. Shell
7. Front hatch
8. PU-coat wheel

REMOTE CONTROLLER

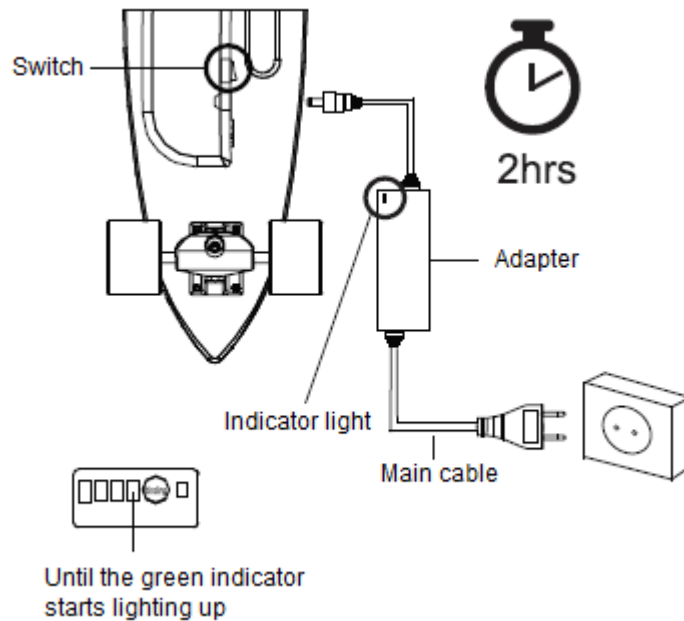


1. Binding button
2. Direction switch
3. Indicator
4. Power switch
5. Battery chamber
6. Speed mode switch LS: 10 km/h or 12 km/h HS: 20 km/h or 24 km/h
7. Throttle

CHARGING INSTRUCTIONS

WARNING! Charging should be done only by an adult.

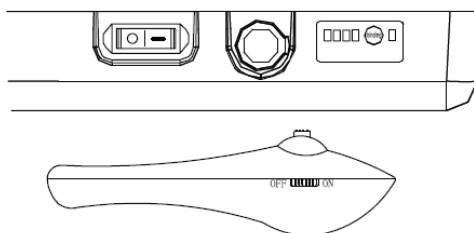
- Turn on the longboard.
- Take out the adapter and the main cable from the box. Make sure that it is dry and clean. Combine these two parts.
- Connect the charging plug through charging port with the longboard. Then insert the main cable into the socket.
- Charge it until the power indicator on the board turns green.



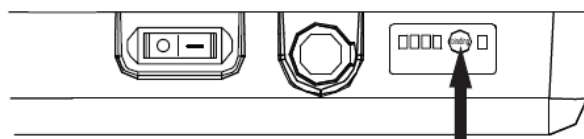
CONNECTION

Controller is missing – controller and board should be connected before using. Follow these steps.

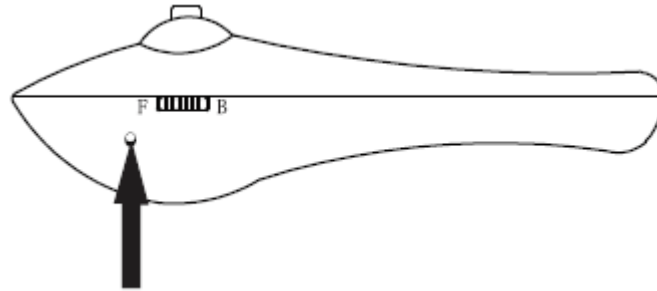
- Turn on the board switch and the controller.



- Push and hold the binding button on the board until the blue light beside it turns off and starts lighting again.



- Use a needle or a similar thin instrument and stick it into the hole on the left side of the controller bottom. Push and hold the binding button.



- Hold this button until the blue light on the board starts flashing quickly. That means that the connection has been successfully done.

STORING AND MAINTENANCE

- Regularly check the battery, motor and controller as well.
- This product is to be used only on a flat and safe surface. Avoid narrow places.
- Keep this device clean and protect it from dust and humidity.
- Never use it on wet or dusty surface.
- Turn off the board and the controller if you don't use them.
- If occurs some damage or fault of the battery, wires, controller or board, stop using immediately.
- Use only original charger.
- Never disassemble the battery or this device.
- Lithium Ion battery is considered hazardous matter. Observe instructions below to avoid possible danger:
 - Check the battery regularly and make sure it is not damaged or worn.
 - Protect the battery from shocks and impacts.
 - If the battery gets overheated, smells or if some leakage happens, stop using and don't charge it. Dispose it only according to local laws and regulations.
 - Never use the battery during charging.
 - Charge it fully before using.
 - Never put it into fire or in a liquid.
 - Never shorten wires or cables.
 - Protect yourself from chemical liquids that can leak from damaged battery.
 - Don't replace or repair the battery yourself. Contact a professional service.

ENVIRONMENT PROTECTION

After the product lifespan expired or if the possible repairing is uneconomic, dispose it according to the local laws and environmentally friendly in the nearest scrapyards. Don't put the battery among house waste.

By proper disposal you will protect the environment and natural sources. Moreover, you can help protect human health. If you are not sure in correct disposing, ask local authorities to avoid law violation or sanctions.

TERMS AND CONDITIONS OF WARRANTY, WARRANTY CLAIMS

General Conditions of Warranty and Definition of Terms

All Warranty Conditions stated hereunder determine Warranty Coverage and Warranty Claim Procedure. Conditions of Warranty and Warranty Claims are governed by Act No. 40/1964 Coll. Civil Code, Act No. 513/1991 Coll., Commercial Code, and Act No. 634/1992 Coll., Consumer Protection Act, as amended, also in cases that are not specified by these Warranty rules.

The seller is SEVEN SPORT s.r.o. with its registered office in Borivojova Street 35/878, Prague 13000, Company Registration Number: 26847264, registered in the Trade Register at Regional Court in Prague, Section C, Insert No. 116888.

According to valid legal regulations it depends whether the Buyer is the End Customer or not.

“The Buyer who is the End Customer” or simply the “End Customer” is the legal entity that does not conclude and execute the Contract in order to run or promote his own trade or business activities.

“The Buyer who is not the End Customer” is a Businessman that buys Goods or uses services for the purpose of using the Goods or services for his own business activities. The Buyer conforms to the General Purchase Agreement and business conditions to the extent specified in the Commercial Code.

These Conditions of Warranty and Warranty Claims are an integral part of every Purchase Agreement made between the Seller and the Buyer. All Warranty Conditions are valid and binding, unless otherwise specified in the Purchase Agreement, in the Amendment to this Contract or in another written agreement.

Warranty Conditions

Warranty Period

The Seller provides the Buyer a 24 months Warranty for Goods Quality, unless otherwise specified in the Certificate of Warranty, Invoice, Bill of Delivery or other documents related to the Goods. The legal warranty period provided to the Consumer is not affected.

By the Warranty for Goods Quality, the Seller guarantees that the delivered Goods shall be, for a certain period of time, suitable for regular or contracted use, and that the Goods shall maintain its regular or contracted features.

The Warranty does not cover defects resulting from (if applicable):

- User's fault, i.e. product damage caused by unqualified repair work, improper assembly, insufficient insertion of seat post into frame, insufficient tightening of pedals and cranks
- Improper maintenance
- Mechanical damages
- Regular use (e.g. wearing out of rubber and plastic parts, moving mechanisms, joints etc.)
- Unavoidable event, natural disaster
- Adjustments made by unqualified person
- Improper maintenance, improper placement, damages caused by low or high temperature, water, inappropriate pressure, shocks, intentional changes in design or construction etc.

Warranty Claim Procedure

The Buyer is obliged to check the Goods delivered by the Seller immediately after taking the responsibility for the Goods and its damages, i.e. immediately after its delivery. The Buyer must check the Goods so that he discovers all the defects that can be discovered by such check.

When making a Warranty Claim the Buyer is obliged, on request of the Seller, to prove the purchase and validity of the claim by the Invoice or Bill of Delivery that includes the product's serial number, or eventually by the documents without the serial number. If the Buyer does not prove the validity of the Warranty Claim by these documents, the Seller has the right to reject the Warranty Claim.

If the Buyer gives notice of a defect that is not covered by the Warranty (e.g. in the case that the Warranty Conditions were not fulfilled or in the case of reporting the defect by mistake etc.), the Seller is eligible to require a compensation for all the costs arising from the repair. The cost shall be calculated according to the valid price list of services and transport costs.

If the Seller finds out (by testing) that the product is not damaged, the Warranty Claim is not accepted. The Seller reserves the right to claim a compensation for costs arising from the false Warranty Claim.

In case the Buyer makes a claim about the Goods that is legally covered by the Warranty provided by the Seller, the Seller shall fix the reported defects by means of repair or by the exchange of the damaged part or product for a new one. Based on the agreement of the Buyer, the Seller has the right to exchange the defected Goods for a fully compatible Goods of the same or better technical characteristics. The Seller is entitled to choose the form of the Warranty Claim Procedures described in this paragraph.

The Seller shall settle the Warranty Claim within 30 days after the delivery of the defective Goods, unless a longer period has been agreed upon. The day when the repaired or exchanged Goods is handed over to the Buyer is considered to be the day of the Warranty Claim settlement. When the Seller is not able to settle the Warranty Claim within the agreed period due to the specific nature of the Goods defect, he and the Buyer shall make an agreement about an alternative solution. In case such agreement is not made, the Seller is obliged to provide the Buyer with a financial compensation in the form of a refund.



SEVEN SPORT s.r.o.

Registered Office:	Borivojova 35/878, 130 00 Praha 3, Czech Republic
Headquarters:	Delnicka 957, 749 01 Vitkov, Czech Republic
Warranty & Service Centre:	Cermenska 486, 749 01 Vitkov, Czech Republic
CRN:	26847264
VAT ID:	CZ26847264
Phone:	+420 556 300 970
E-mail:	eshop@insportline.cz reklamace@insportline.cz servis@insportline.cz
Web:	www.insportline.cz

SK

INSPORTLIN s.r.o.

Headquarters, Warranty & Service centre:	Elektricna 6471, 911 01 Trencin, Slovakia
CRN: 36311723	
VAT ID: SK2020177082	
Phone:	+421(0)326 526 701
E-mail:	objednavky@insportline.sk reklamacie@insportline.sk servis@insportline.sk
Web:	www.insportline.sk

Date of Sale:

Stamp and Signature of Seller: