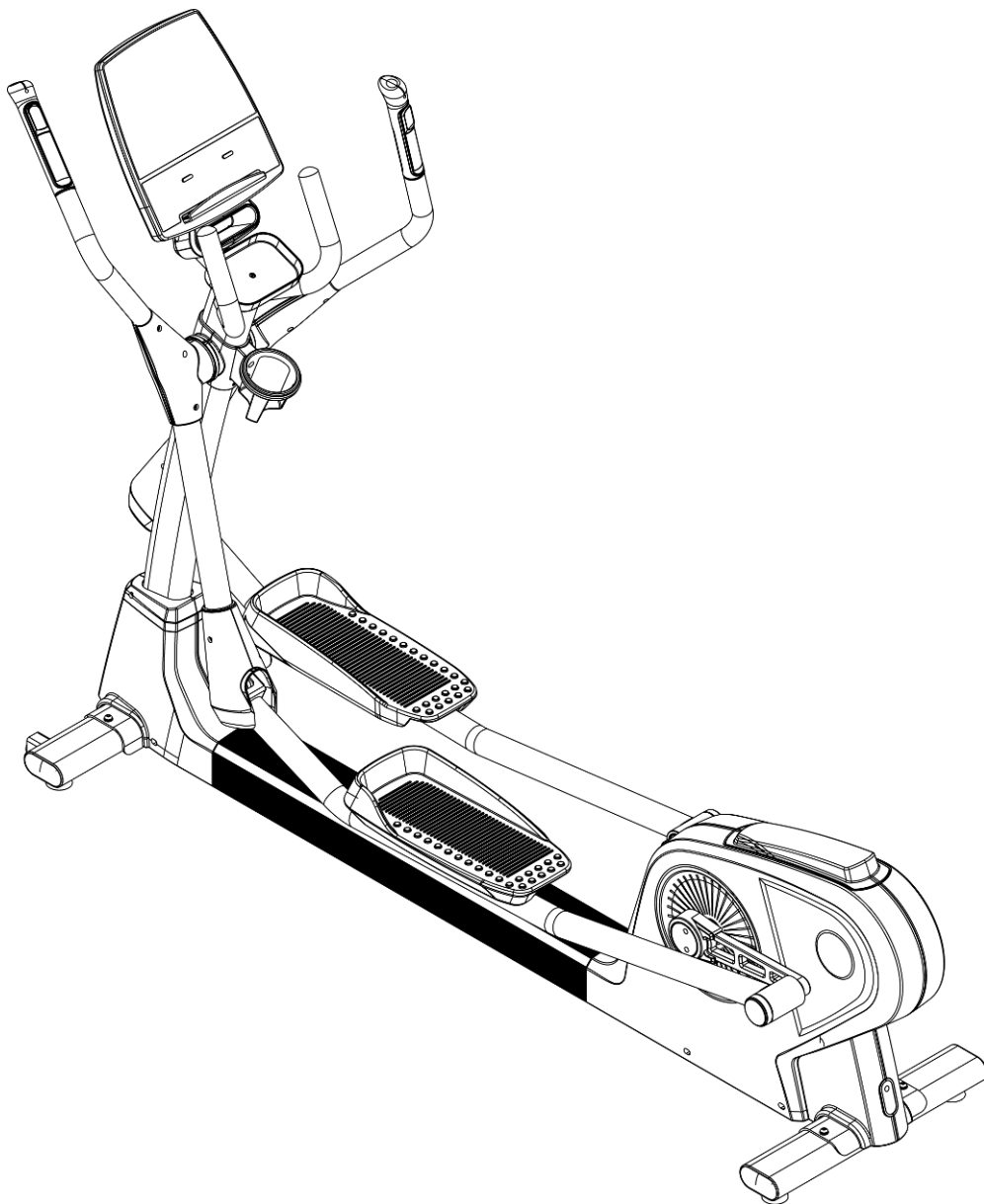




USER MANUAL – EN
IN 14170 Elliptical trainer Gemini E200



CONTENTS

- SAFETY PRECAUTIONS..... 3
- PARAMETERS 4
- PARTS LIST 4
 - Screw bag 5
- ASSEMBLY 7
- HOW TO USE..... 10
- CONTROL PANEL 10
 - Display modes 11
 - Key functions..... 11
- PROGRAMS..... 11
 - Preset programs (P1 – P12) 11
 - Manual mode 12
 - User mode..... 13
 - Heart rate control mode 13
 - Watts mode..... 15
- PROGRAMS IN THE DOT MATRIX 15
- EXPLODED DRAWING..... 17
- COMPONENTS LIST 18
- TERMS AND CONDITIONS OF WARRANTY, WARRANTY CLAIMS..... 20

SAFETY PRECAUTIONS

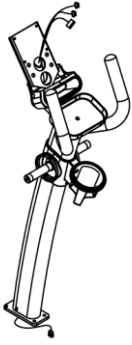
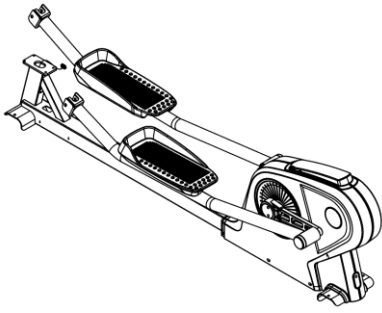
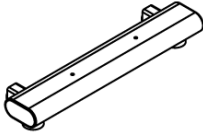
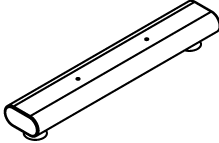


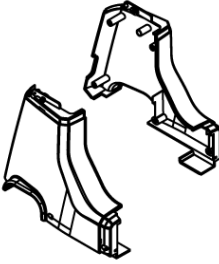


You should always take basic precautions when using this product, including the following:

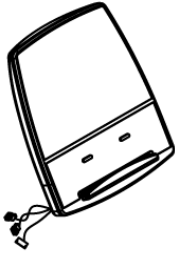
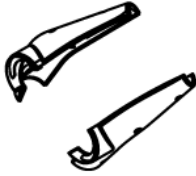

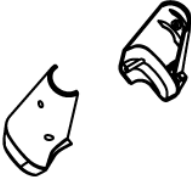


- Please read these instructions carefully before using this product.
- **DANGER:** Always unplug the product from the electrical outlet immediately after using it and before cleaning and maintenance, otherwise you risk an electric shock.
- **WARNING:** To reduce the risk of burns, fire, electric shock or other injury, always inspect the plug before connecting it to the socket.
- Before you use this machine, please step on it first and then start the machine. Do not act the other way around.
- Always turn the machine off if you are not using it.
- To avoid any danger, close supervision is necessary when this product is used by children, invalids or disabled people.
- People with reduced mental or sensory capabilities (including children) cannot exercise on this machine without supervision.
- Children cannot use this product.
- Incorrect or excessive training may be detrimental to your health.
- Only use the product for the purposes it was made for. Do not use attachments that were not recommended by the manufacturer to avoid dangerous situations and accidents.
- Never operate the product if the cord or plug are damaged, if they are not working properly, have been damaged, or dropped into water. Please return the product to the service center of seller for examination and repair.
- Do not carry this product by the supply cord or use the cord as a handle.
- Keep the cord away from hot surfaces or ground.
- Never operate the product with the air vents blocked. Keep the air vents free of lint, hair, etc.
- Never drop or insert any objects into any vent of the product.
- Do not use or operate the machine outdoors.
- Please put this product on a flat surface or a platform.
- Keep a 0.6 m safety area around the machine.
- Do not operate the machine in places where aerosol (spray) products are being used or where oxygen is thin.
- Connect the product to a properly grounded outlet only.
- Regularly check the machine for damage, you'll increase its longevity.
- The brake system is controlled by the speed under the Watts mode, but under any other mode, it does not depend on speed.
- **Weight limit:** 140 kg
- **Category:** SA (EN 957) for professional or commercial use
- **WARNING:** The heart rate monitoring system may be inaccurate. Over exercising may result in serious injury or death. If you feel faint stop exercising immediately.

PARAMETERS

Dimensions before assembly	2122 x 624 x 1592 mm
Dimensions after assembly	2180 x 515 x 773 mm
Weight	97.1 kg
Stride length	510 mm

PARTS LIST

A. Console mast set	B. Main frame set	C. Front stabilizer set
		
D. Rear stabilizer set	E. Left swing tube set	F. Right swing tube set
		
G. Main frame front cover (left/right)	H. Console mast decoration cover (left/right)	I. Left swing shaft decoration cover (front/rear)
		

J. Console set (LED)	K. Swing shaft decoration cover (right/front; left/rear)	L. Left swing shaft lower decoration cover (outer/inner)
		
M. Right swing shaft lower decoration cover (outer/inner)	N. Console lower decoration cover	P. Middle cover
		

Screw bag

ITEM	Description	Qty	ITEM	Description	Qty
K01	Truss inner hex screw M8xP1.25x25	4	K12	Nylon nut M10xP1.5	2
K02	Spring washer M8	4	K13	Truss cross screw M4xP0.7x12	16
K03	Washer $\Phi 8 \times \Phi 16 \times 1.5t$	4	K14	Truss cross self-tapping screw $\Phi 4 \times 16$	16
K04	CKS inner hex steel screw M8xP1.25x20	4	K15	Truss cross screw M5xP0.8x10	4
K05	Washer $\phi 8 \times \phi 12 \times 1.0t$	4	K16	Truss cross self-tapping screw $\Phi 4 \times 20$	3
K06	Wave washer $\phi 25.6 \times \phi 33.7 \times 0.3t$	2	K21	L-shaped wrench+ cross opener 5mm	1
K07	Allen steel screw M10xP1.5x15	2	K22	Opening wrench 13mm+15mm	1
K08	Wave washer M10	2	K23	L-shaped wrench+ cross opener 6mm	1
K09	Washer $\phi 10 \times \phi 30 \times 2.0t$	2	K24	Torx wrench	1
K10	Allen steel screw M10xP1.5x75	2	K25	Bushing wrench +cross opener 13mm+17mm	1
K11	Flat washer $\Phi 10 \times \Phi 20 \times 2.0t$	4			

K01.



K02.



K03.



K04.



K05.



K06.



K07.



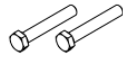
K08.



K09.



K10.



K11.



K12.



K13.



K14.



K15.



K16.



K21.



K22.



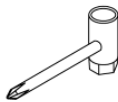
K23.



K24.



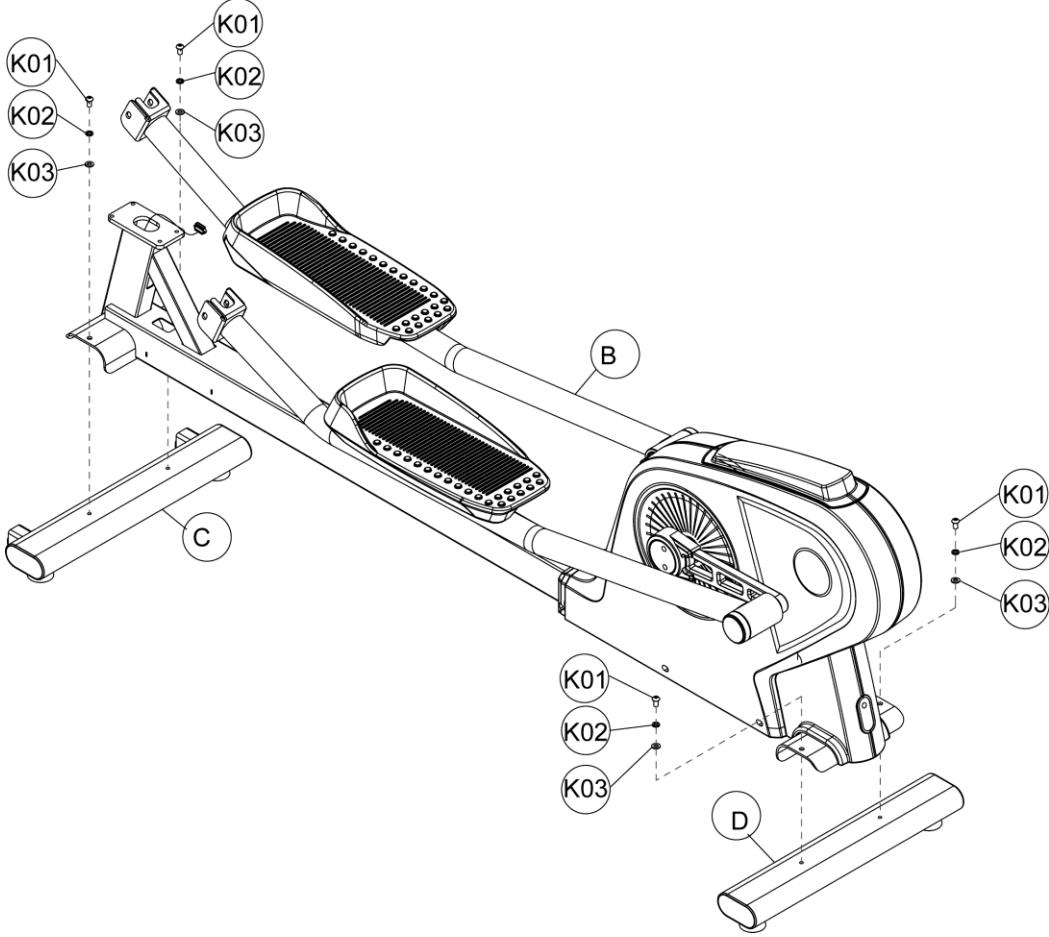
K25.



ASSEMBLY

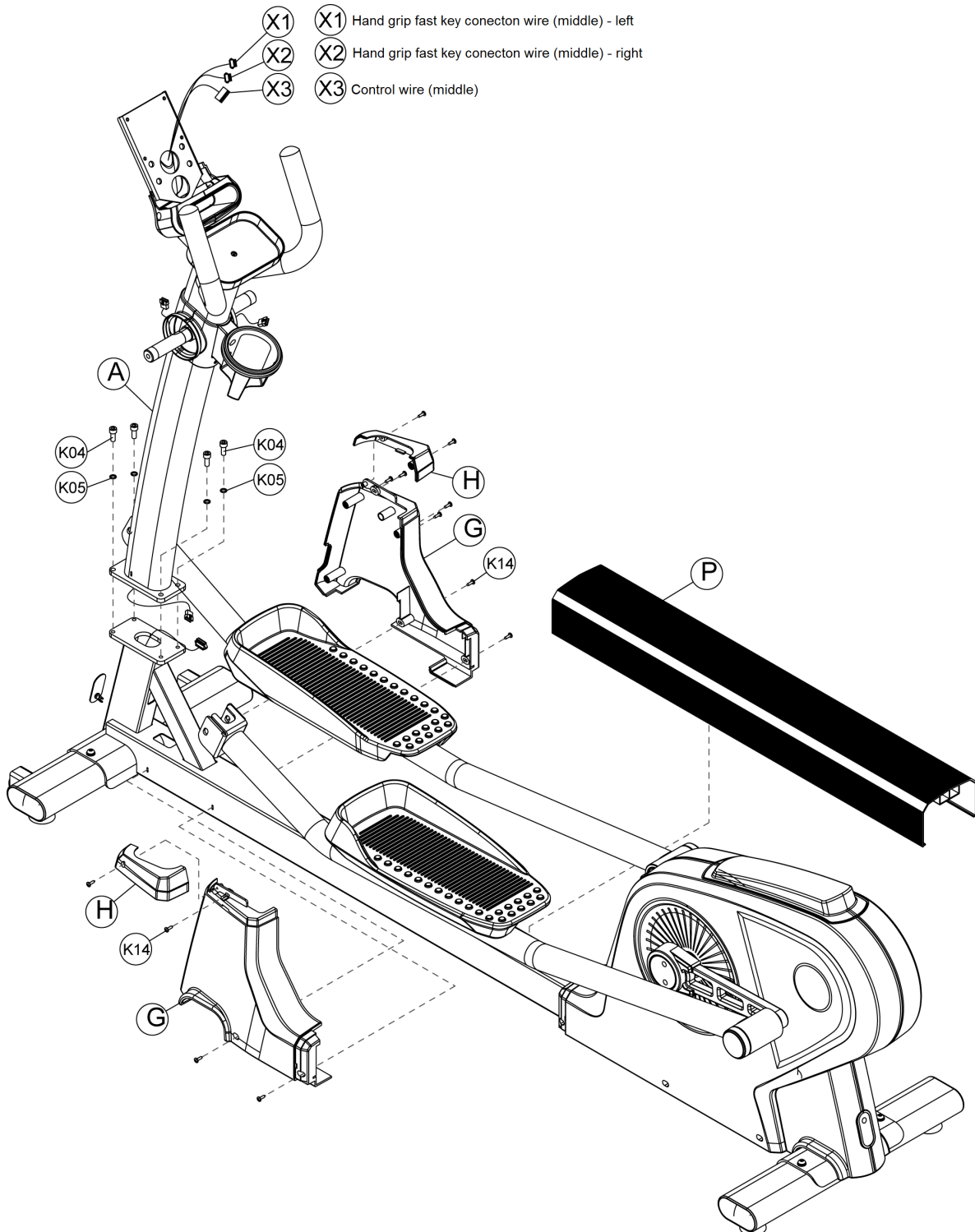
Step 1

Fix and fasten the main frame set (B) and the front and rear stabilizer (C, D) with screw (K01) and spring washer (K02), washer (K03).



Step 2

According to the image, connect the relative wires, and assemble the console mast (A) to the main frame set with screw (K04), washer (K05) to fix and fasten. And then, fix the main frame front cover (G) to the main frame with screw (K14), and lock the console mast decoration cover (H) with screw (K14). Finally, cover with the middle cover (P).

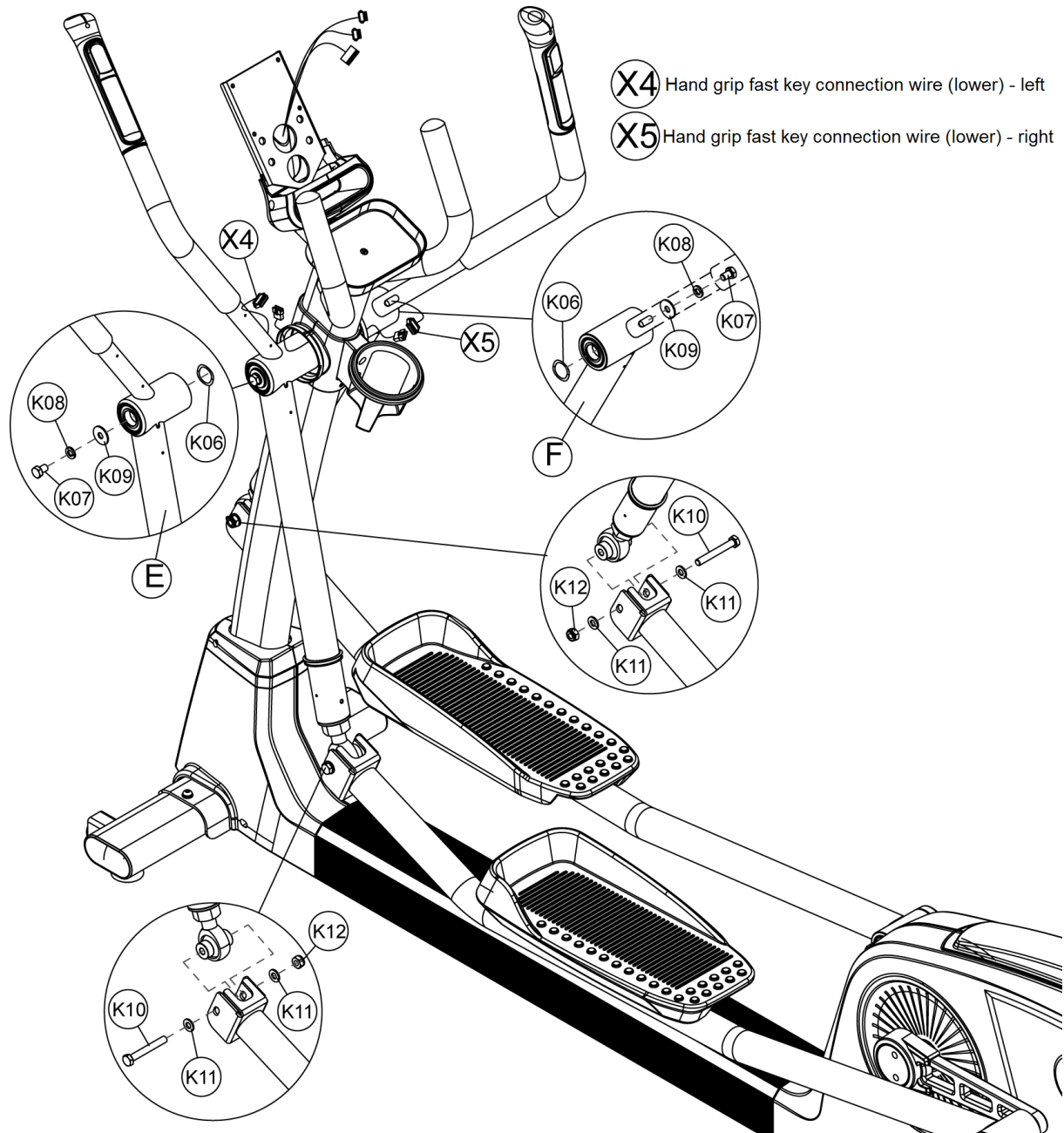


Step 3

According to the image, plug the wave washer (K06), and then plug the left & right handle bar set (E, F) into the metal core of the console mast and fasten with screw (K07) and washer (K08, K09).

Next, connect the handle bar lower terminal to the end terminal of the interlock pedal, and ensure them are fastened tightly with screw (K10), washer (K11) and screw nut (K12) abiding by the image.

According to the image, connect the middle and lower wires of the hand grip fast key, and please notice the direction. When the direction is wrong, please do not plug compulsively. After the wires are connected, please plug the rest wires into the console mast.



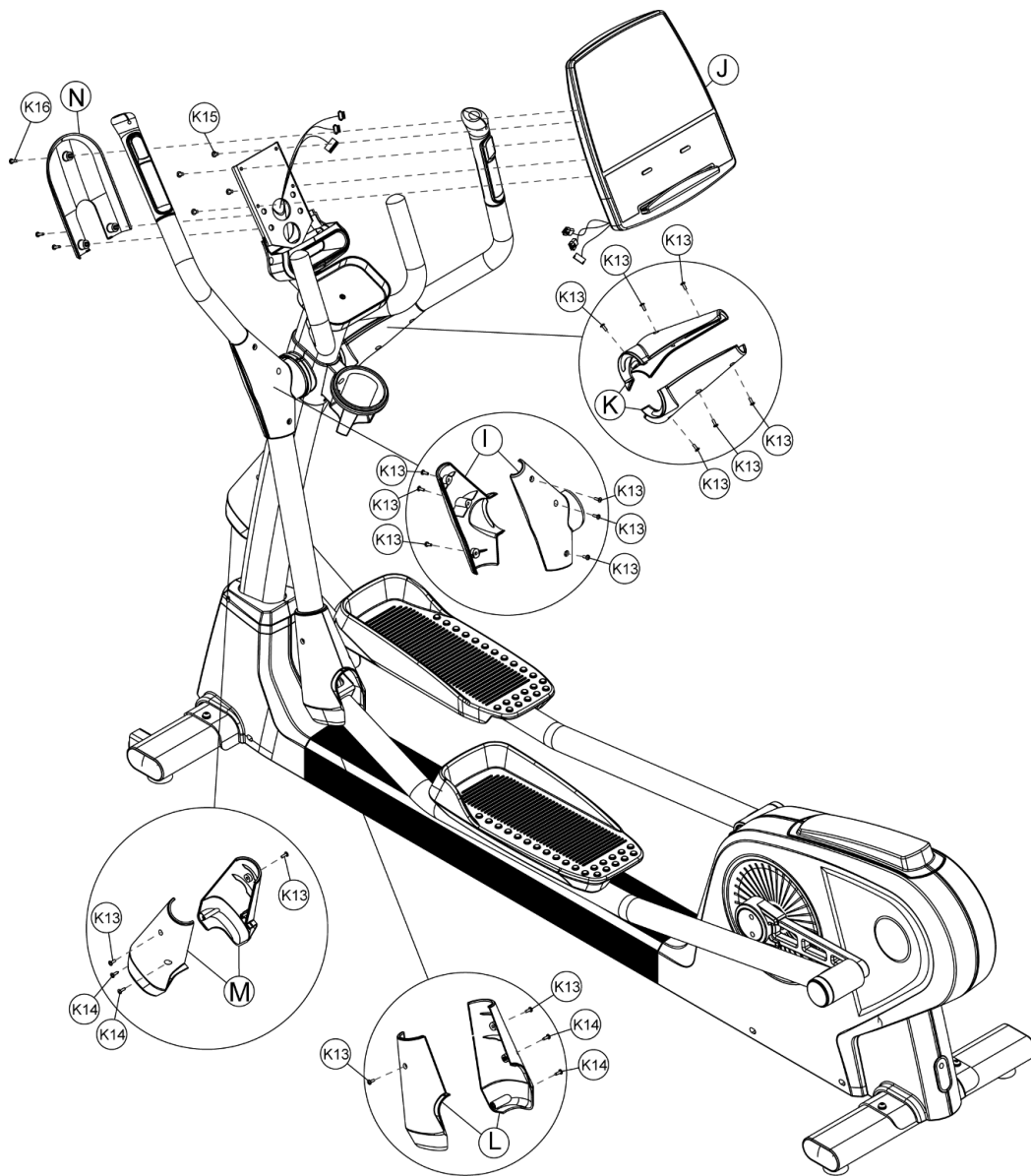
Step 4

Connect the console (J) with the wires of the console mast set. After that, fasten the console (J) with screw (K15), and then fix and fasten the console lower decoration cover (N) with screw (K16).

Lean the shaft decoration cover set (K, I) to the horizontal tube of the handle bar tube set tightly and fix with screw (K13).

Lean the swing lower decoration cover set (L, M) to the swing tube tightly and fix with screw (K13, K14).

Attention: Please check whether the rubber covers match with each other, and whether the rubber covers are connected tightly.



HOW TO USE

- One after the other, step with your feet onto the pedals, firmly grab the handles and start exercising
- The display will show the current data. (Learn how to set the values and choose programs below).
- Get off the machine by first stepping off with only one foot and then the other.

CONTROL PANEL

This is a LED display console, and the functions shown include RPM, SPEED, TIME, CALORIES, DISTANCE, WATTS, LEVEL, and dot matrix display of PROGRAM graph.

Display modes

1. Standby mode

After the console turns on, the dot matrix displays the user's basic values – U1 (in km). You can choose from U1 – U4.






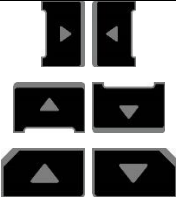
2. Sleep mode

- When the console in the standby mode, if RPM is lower than 30 or keys no operation for 15 seconds, the program will enter the prompt mode for 16 seconds (after 16 beeps the scale enters sleep mode). During the timing period of 16 seconds, if RPM is higher than 30 or keys are pressed, the timing program of 16 seconds will be canceled, and the console will go back to standby mode.

In the setting page (User setting, weight setting and settings in all programs), if RPM is lower than 30 for 10 seconds, the program will be end and jump back to standby mode. If RPM is still lower than 30 or no key operation is detected after 5 seconds, the program will enter prompt for 16 seconds (after 16 beeps the scale enters sleep mode). During the timing period of 16 seconds, if RPM is higher than 30 or keys are pressed, the timing program of 16 seconds will be canceled, and the console will go back to standby mode.

When operating all the programs, if RPM has not reached 30, the dot matrix display will show the rolling string of "RPM↑" for 5 seconds. After that, if the RPM still not reached to 30, dot matrix display will show the rolling string of "PAUSE" for 5 seconds.

Key functions

	START: Press the key and the program will start the function of QUICK START directly.
	RECOVERY: During the exercise, hold the hand pulse sensor until the PULSE window shows the heart rate value, and then press RECOVERY. After press RECOVERY, the displays will stop and the TIME window will show count down for 60 seconds. After the time count down to 0, will display will show the result of your heart rate recovery status with F1~F6. F1 means the best level of the heart rate recovery status.
	PAUSE: After the start the exercise, press PAUSE key, and the program will immediately operate the action of "pause". During the setting process within PROGRAM, press PAUSE key could go back to the program select page for reworking.
	STOP: Press STOP key to stop.
	ENTER: During the setting of programs, press ENTER key to confirm and go to the next page. You can use ENTER key to switch the display "SPEED - TIME – DISTANCE / RPM - CALIROES - WATTS" screen.
	DIRECTION KEYS: The direction keys are used for the increase and decrease of various values (WEIGHT, HEIGHT, AGE, SEX, PULSE, TIME...), selection of functional modes (WATT, HRP, USER, PROGRAM, MANUAL), and increase or decrease of resistance.

PROGRAMS

Preset programs (P1 – P12)

- Press the direction keys to select P1~P12 PROGRAM.

2. Press Enter to get into the target value setting page.
3. After press ENTER, the TIME indicator light up and the LED indicator light shines on the display of "TIME". The initial value of "TIME" is "0:00". Press direction keys to set "TIME".
4. After the setting of "TIME", press ENTER, the DISTANCE indicator light up and the LED indicator light shines on the display of "DISTANCE". The initial value of "DISTANCE" is "0.0". Press direction keys to set "DISTANCE".
5. After the setting of "DISTANCE", press ENTER, the CALORIES indicator light up and the LED indicator light shines on the display of "CALORIES". The initial value of "CALORIES" is "0". Press direction keys to set "CALORIES".
6. The TIME – DISTANCE – CALORIES can be cycle setting. After the target settings of TIME, DISTANCE and CALORIES are determined, press the key "START", and this mode starts to operate.

During the exercise, press "ENTER" to switch, fix and display "SPEED - TIME – DISTANCE / RPM - CALORIES - WATTS" screen.

During the exercise, press "PAUSE", and the program will pause. The TIME / DISTANCE / CALORIES display will show motion data by turns.

After pause, if you want to continue the previous exercise, press "START" and the program will continue accumulate with the TIME/DISTANCE/CALORIES data before press pause.

Press "STOP" could stop the program, and press "STOP" again will clean the exercise date and go back to the main program selecting page for MANUAL/ PROGRAM/ USER/ HRC/ WATTS.

Dot matrix displayed messages during exercise:

During exercise, if RPM has not been reached to 30, screen will appear twice the rolling string of "RPM↑" for 5 seconds. After the message, if the RPM still not reach to 30, program will be paused and screen will appear twice the rolling string of "PAUSE" for 5 seconds.

Manual mode

1. Press the direction keys to select MANUAL.
2. Press Enter to get into the target value setting page.
3. After press ENTER, the TIME indicator light up and the LED indicator light shines on the display of "TIME". The initial value of "TIME" is "0:00". Press direction keys to set "TIME".
4. After the setting of "TIME", press ENTER, the DISTANCE indicator light up and the LED indicator light shines on the display of "DISTANCE". The initial value of "DISTANCE" is "0.0". Press direction keys to set "DISTANCE".
5. After the setting of "DISTANCE", press ENTER key, the CALORIES indicator light up and the LED indicator light shines on the display of "CALORIES". The initial value of "CALORIES" is "0". Press direction keys to set "CALORIES".
6. The TIME – DISTANCE – CALORIES can be cycle setting. After the target settings of TIME, DISTANCE and CALORIES are determined, press the key "START", and this mode starts to operate.

During the exercise, press "ENTER" to switch, fix and display "SPEED - TIME – DISTANCE / RPM - CALORIES - WATTS" screen.

During the exercise, press "PAUSE", and the program will pause. The TIME / DISTANCE / CALORIES display will show motion data by turns.

After pause, if you want to continue the previous exercise, press "START" and the program will continue accumulate with the TIME/DISTANCE/CALORIES data before press pause.

Press "STOP" could stop the program, and press "STOP" again will clean the exercise date and go back to the main program selecting page for MANUAL/ PROGRAM/ USER/ HRC/ WATTS.

Dot matrix displayed messages during exercise:

During exercise, if RPM has not been reached to 30, screen will appear twice the rolling string of "RPM↑" for 5 seconds. After the message, if the RPM still not reach to 30, program will be paused and screen will appear twice the rolling string of "PAUSE" for 5 seconds.

User mode

1. Press the direction keys to select USER.
2. Press Enter to get into the target value setting page.
3. After press ENTER, the TIME indicator light up and the LED indicator light shines on the display of "TIME". The initial value of "TIME" is "0:00". Press direction keys to set "TIME".
4. After the setting of "TIME", press ENTER, the DISTANCE indicator light up and the LED indicator light shines on the display of "DISTANCE". The initial value of "DISTANCE" is "0.0". Press direction keys to set "DISTANCE".
5. After the setting of "DISTANCE", press ENTER, the CALORIES indicator light up and the LED indicator light shines on the display of "CALORIES". The initial value of "CALORIES" is "0". Press direction keys to set "CALORIES".
6. The TIME – DISTANCE – CALORIES can be cycle setting. After the target settings of TIME, DISTANCE and CALORIES are determined, press the key "START", and this mode starts to operate.

If the user wants to do the operating program of graphical editing:

1. Enter into "USER" program, the TIME indicator light up and the LED indicator light shines on the display of "TIME". The initial value of "TIME" is "0:00".
2. For editing of graphs, press "ENTER" for 3 seconds, then the first row on the Dot Matrix flicked. At the TIME display chart will show code S-1 to show the editing.
3. Press DIRECTION keys to set "LEVEL". After completed setting is confirmed, press "ENTER" to setting program of LEVEL on the next row.
4. When entering the LEVEL setting but failed on setting, the user can press ENTER and convert to the next operation setting program. There are "S-1 ~ S-16" locations in total to set; after the setting of those locations, the machine converts to the setting program of "TIME" for operation.

During the exercise, press "ENTER" to switch, fix and display "SPEED - TIME – DISTANCE / RPM - CALORIES - WATTS" screen.

During the exercise, press "PAUSE", and the program will pause. The TIME / DISTANCE / CALORIES display will show motion data by turns.

After pause, if you want to continue the previous exercise, press "START" and the program will continue accumulate with the TIME/DISTANCE/CALORIES data before press pause.

Press "STOP" could stop the program, and press "STOP" again will clean the exercise date and go back to the main program selecting page for MANUAL/ PROGRAM/ USER/ HRC/ WATTS.

Dot matrix displayed messages during exercise:

During exercise, if RPM has not been reached to 30, screen will appear twice the rolling string of "RPM↑" for 5 seconds. After the message, if the RPM still not reach to 30, program will be paused and screen will appear twice the rolling string of "PAUSE" for 5 seconds.

Heart rate control mode

1. Press the direction keys to select "HRP".
2. Press Enter to get into the target value setting page.
3. After press ENTER, the "HEIGHT" indicator light up and the Dot Matrix display will show "HEIGHT". The initial value of "HEIGHT" is "170". Press direction keys to set "HEIGHT".
4. After the setting of HEIGHT, press ENTER, the "AGE" indicator light up and the Dot Matrix display will show "AGE". The initial value of "AGE" is "30". Press direction keys to set "AGE".

5. After the setting of AGE, press ENTER, the "SEX" indicator light up and the Dot Matrix display will show GENDER. The initial value of "SEX" is "M" as male ("F" as female). Press direction keys to set "SEX"..
6. After the setting of SEX, press ENTER, the "TARGET, 90%, 75%, 55%" indicator light up and at "PULSE" display will show the initial value. Press the direction keys to select the target. TARGET could allow user to set the target heart rate value with the direction keys. The initial value of 90%, 75% and 55% depend on the HEIGHT, AGE and SEX setting.
7. After complete the setting of "PULSE", press "ENTER", the TIME indicator light up and the LED indicator light shines on the display of "TIME". The initial value of "TIME" is "0:00". Press direction keys to set "TIME".
8. After the setting of "TIME", press ENTER, the DISTANCE indicator light up and the LED indicator light shines on the display of "DISTANCE". The initial value of "DISTANCE" is "0.0". Press direction keys to set "DISTANCE".
9. After the setting of "DISTANCE", press ENTER key, the CALORIES indicator light up and the LED indicator light shines on the display of "CALORIES". The initial value of "CALORIES" is "0". Press direction keys to set "CALORIES".
10. The TIME – DISTANCE – CALORIES can be cycle setting. After the target settings of TIME, DISTANCE and CALORIES are determined, press the key "START", and this mode starts to operate.

During the exercise, press "ENTER" to switch, fix and display "SPEED - TIME – DISTANCE / RPM - CALORIES - WATTS" screen.

During the exercise, press "PAUSE", and the program will pause. The TIME / DISTANCE / CALORIES display will show motion data by turns.

After pause, if you want to continue the previous exercise, press "START" and the program will continue accumulate with the TIME/DISTANCE/CALORIES data before press pause.

Press "STOP" could stop the program, and press "STOP" again will clean the exercise date and go back to the main program selecting page for MANUAL/ PROGRAM/ USER/ HRC/ WATTS.

Dot matrix displayed messages during exercise:

During exercise, if RPM has not been reached to 30, screen will appear twice the rolling string of "RPM↑" for 5 seconds. After the message, if the RPM still not reach to 30, program will be paused and screen will appear twice the rolling string of "PAUSE" for 5 seconds.

Warm-up function

1. Resistance is preset at level 1, and "Heart Rate Control" function will automatically work after 1 minute.
2. Users can still use the direction keys to increase or reduce resistance.

Heart rate control program

1. In the program, comparison between "actual heart rate" and "preset heart rate (55% / 75% / 90% / TARGET)" will be conducted once each 10 seconds.
2. When the program fails to detect "actual heart rate", then the program will be paused and resistance won't be increased. The PULSE display will show "P".
3. Users can also use the direction keys to increase or reduce resistance.
4. When "actual heart rate" is lower than "preset heart rate" with 4, the program will automatically increase the resistance. Each time will increase for 1 level; the maximum will be increased to level 16.
5. When "actual heart rate" is higher than "preset heart rate" with 4, the program will automatically reduce the resistance. Each time will decrease for 1 level; the minimum will be decreased to level 1.

- When actual heart rate reaches preset heart rate for consecutive 3 minutes, or preset time is over, the program will automatically stop "Heart Rate Control" function, and enter into "COOL DOWN".

Cool down

- When start "1-minute COOL DOWN" function, the program makes a long sound of "beep", and the Dot Matrix display will show "COOL". The TIME display will start 1-minute count down.
- In COOL DOWN function, resistance will be level 1, and all data are continuation of the data in previous "Heart Rate Control" function, and they continue to be used and accumulated.
- In this COOL DOWN function, only the key "STOP/ RESET" is open for use.

Watts mode

- Press the direction keys to select WATTS.
- Press Enter to get into the target value setting page.
- After press ENTER, the WATTS indicator light up and the LED indicator light shines on the display of "WATTS". The initial value of "WATTS" is "120". Press direction keys to set "WATTS".
- After the setting of WATTS, press ENTER, the TIME indicator light up and the LED indicator light shines on the display of "TIME". The initial value of "TIME" is "0:00". Press direction keys to set "TIME".
- After the setting of "TIME", press ENTER, the DISTANCE indicator light up and the LED indicator light shines on the display of "DISTANCE". The initial value of "DISTANCE" is "0.0". Press direction keys to set "DISTANCE".
- After the setting of "DISTANCE", press ENTER, the CALORIES indicator light up and the LED indicator light shines on the display of "CALORIES". The initial value of "CALORIES" is "0". Press direction keys to set "CALORIES".
- The TIME – DISTANCE – CALORIES can be cycle setting. After the target settings of TIME, DISTANCE and CALORIES are determined, press the key "START", and this mode starts to operate.

During the exercise, press "ENTER" to switch, fix and display "SPEED - TIME – DISTANCE / RPM - CALORIES - WATTS" screen.

During the exercise, press "PAUSE", and the program will pause. The TIME / DISTANCE / CALORIES display will show motion data by turns.

After pause, if you want to continue the previous exercise, press "START" and the program will continue accumulate with the TIME/DISTANCE/CALORIES data before press pause.

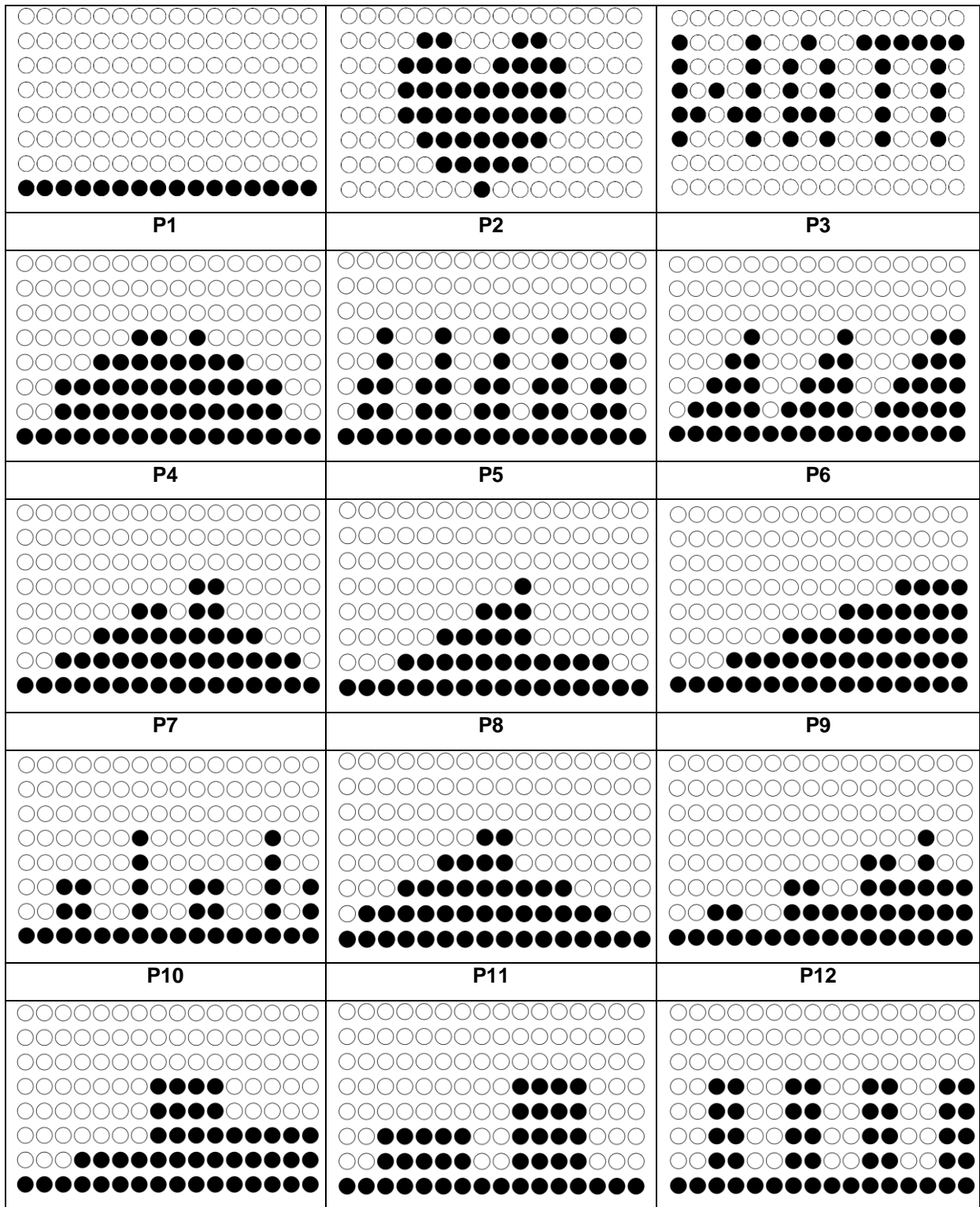
Press "STOP" could stop the program, and press "STOP" again will clean the exercise date and go back to the main program selecting page for MANUAL/ PROGRAM/ USER/ HRC/ WATTS.

Dot matrix displayed messages during exercise:

During exercise, if RPM has not been reached to 30, screen will appear twice the rolling string of "RPM↑" for 5 seconds. After the message, if the RPM still not reach to 30, program will be paused and screen will appear twice the rolling string of "PAUSE" for 5 seconds.

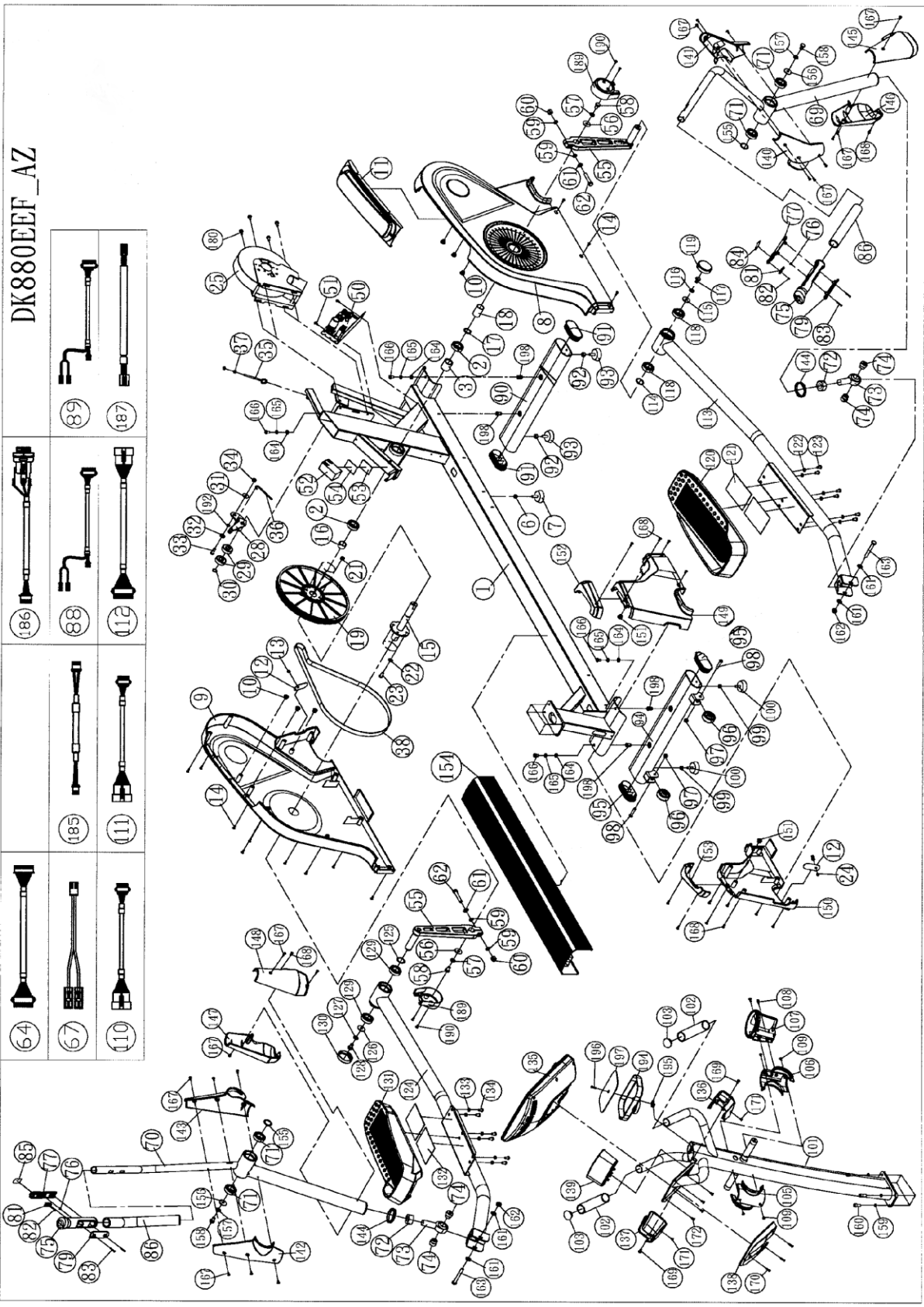
PROGRAMS IN THE DOT MATRIX

MANUAL MODE	HEART RATE CONTROL (HRC)	WATTS MODE
--------------------	-------------------------------------	-------------------



EXPLODED DRAWING

DK880EEF_AZ



COMPONENTS LIST

NO	ITEM	Qty	NO	ITEM	Qty
1	Frame Assembly	1	105	Control shaft decoration cover (front)	1
2	Bearing 6005ZZ	2	106	Control shaft decoration cover (front)	1
3	Crank shaft insulation tube B	1	107	Bottle shelf	1
6	Hex screw nut M8xP1.25	1	108	Truss cross screw M4xP0.7x15	2
7	Adjusting feet pad M8X25mm (AS004)	1	109	Counter sink cross screw M4xP0.7x10	4
8	Main frame side cover (left)	1	110	Hand grip fast key connection wire (middle) left	1
9	Main frame side cover (right)	1	111	Hand grip fast key connection wire (middle) right	1
10	Anti-shock soft tube	6	112	Control wire (middle)	1
11	Side cover decoration cover	1	113	Stabilizer tube welding -left	1
12	Socket iron plate	2	114	Wave washer $\phi 25.6 \times \phi 33.7 \times 0.3t$	1
13	Buckle plug HP-8	1	115	Washer $\phi 10 \times \phi 30 \times 2.0t$	1
14	Truss cross self-tapping screw $\phi 4 \times 16$	12	116	Spring washer M10	1
15	Crank shaft welding	1	117	Allen steel screw M10xP1.5x15 blue nyloc	1
16	Crank shaft insulation tube	1	118	Bearing 6005ZZ	2
17	C-shaped ring buckle for $\phi 25$ shaft	1	119	Shaft bushing cover	1
18	Crank shaft insulation tube A	1	120	Feet pedal (left)	1
19	Belt wheel (big) $\phi 310$	1	121	Anti-shock foam-120x90x1.5t single side tape black	2
21	Nylon nut M8xP1.25	4	122	Spring washer M8	6
22	Flat washer $\phi 8 \times \phi 16 \times 1.0t$	4	123	Truss inner hex screw M8xP1.25x15	6
23	Truss inner hex steel screw M8xP1.25x20	4	124	Pedal tube welding -right	1
24	DC Jack dust-proof cover black	1	125	Wave washer $\phi 25.6 \times \phi 33.7 \times 0.3t$	1
25	Generator machine	1	126	Washer $\phi 10 \times \phi 30 \times 2.0t$	1
28	Idler welding	1	127	Spring washer M10	1
29	Bearing 6204ZZ	2	128	Allen steel screw M10xP1.5x15 blue nyloc	1
30	C-shaped buckle for shaft $\phi 20$	1	129	Bearing 6005ZZ	2
31	Washer $\phi 8.0 \times \phi 25 \times 1.5t$	1	130	Shaft bushing cover	1
32	Washer $\phi 8 \times \phi 19 \times 3.0t$	1	131	Feet pedal (right)	1
33	Truss inner hex screw M8xP1.25x25	1	132	Anti-shock foam -120x90x1.5t single side tape black	2

34	Nylon nut M8xP1.25	1	133	Spring washer M8	6
35	Spring adjusting hook	1	134	Truss inner hex screw M8xP1.25x15	6
36	Spring hook	1	135	Computer console set (LED)	1
37	Nylon nut M6xP1.0	2	136	Computer console front decoration cover (left)	1
38	Belt 52"x8 groove	1	137	Computer console front decoration cover (right)	1
50	Digital generator lower controller	1	138	Computer console lower decoration cover	1
51	Truss cross screw M5xP0.8x10	2	139	Stuff shelf	1
52	Battery 12V 2.3Ah	1	140	Swing shaft decoration cover (left front)	1
53	Sticky buckle-female 38X50 single side tape	1	141	Swing shaft decoration cover (left rear)	1
54	Sticky buckle-male 38X50 single side tape	1	142	Swing shaft decoration cover (right front)	1
55	Crank shaft welding	2	143	Swing shaft decoration cover (right rear)	1
56	Washer $\phi 10 \times \phi 30 \times 2.0t$	2	144	Water-proof ring	2
57	Spring washer M10	2	145	Swing lower decoration cover (left outer)	1
58	Allen steel screw M10xP1.5x15 blue nyloc	2	146	Swing lower decoration cover (left inner)	1
59	Washer $\Phi 10 \times \Phi 16 \times 2.0t$	4	147	Swing lower decoration cover (right outer)	1
60	Nylon nut M10xP1.5x12t	2	148	Swing lower decoration cover (right inner)	1
61	Spring washer M10	2	149	Main frame front cover (left)	1
62	Allen steel screw M10xP1.5x55	2	150	Main frame front cover (right)	1
64	Control wire (lower)	1	151	Anti-shock soft tube	2
67	Battery power wire	1	152	Control tube decoration cover (left)	1
69	Swing tube welding-left	1	153	Control tube decoration cover (right)	1
70	Swing tube welding-right	1	154	Middle cover	1
71	Bearing	4	155	Wave washer $\phi 25.6 \times \phi 33.7 \times 0.3t$	2
72	Hex screw nut M22xP1.5 steel material	2	156	Washer $\phi 10 \times \phi 30 \times 2.0t$	2
73	Shaft terminal bearing POS22	2	157	Spring washer M10	2
74	Swing bushing	4	158	Allen steel screw M10xP1.5x15 blue nyloc	2
75	TPR handle bar	2	159	Washer $\phi 8 \times \phi 12 \times 1.0t$	4
76	Counter sink inner hex steel screw M4xP0.7x8	2	160	CKS inner hex steel screw M8xP1.25x20 blue nyloc	4

77	Hand grip pulse cover (long)	2	161	Flat washer $\Phi 10 \times \Phi 20 \times 2.0t$	4
79	Hand grip pulse cover (short)	2	162	Nylon nut M10xP1.5	2
81	Membrane handrail key transform board	2	163	Allen steel screw M10xP1.5x75	2
82	Round head cross self-tapping screw $\Phi 2 \times 6$	2	164	Washer $\Phi 8 \times \Phi 16 \times 1.5t$	4
83	Counter sink inner cross screw M3xP0.5x25 stainless steel	4	165	Spring washer M8	4
84	Membrane key <STOP&START>	1	166	Truss inner hex screw M8xP1.25x20 blue nyloc	4
85	Membrane key <LEVEL>	1	167	Truss cross screw M4xP0.7x12	16
86	HDR foam ID $\phi 26 \times 5 \times 350 \text{mm}$	2	168	Truss cross self-tapping screw $\Phi 4 \times 16$	16
88	Hand grip fast key connection wire (lower) left	1	169	Truss cross screw M5xP0.8x12	2
89	Hand grip fast key connection wire (lower) right	1	170	Truss cross self-tapping screw $\Phi 4 \times 20$	3
90	Front stabilizer tube welding	1	171	Truss cross self-tapping screw $\Phi 4 \times 10$	2
91	Arc-shaped tube cap 50x100x2.0t	2	172	Truss cross screw M5xP0.8x10	4
92	Hex screw nut M8xP1.25	2	180	Allen washer steel screw M6xP1.0x15	4
93	Adjusting feet pad M8X25mm (AS004)	2	185	Grinding wheel control wire	1
94	Rear stabilizer tube welding	1	186	Power connection wire	1
95	Arc-shaped tube cap 50x100x2.0t	2	187	Grinding wheel control wire (A)	1
96	Rolling wheel #032	2	189	Crank shaft cover	2
97	Nylon nut M8xP1.25	2	190	Truss cross screw M4xP0.7x12	4
98	Truss inner hex screw M8xP1.25x40	2	192	Idler insulation bushing	1
99	Hex screw nut M8xP1.25	2	194	Stuff box	1
100	Adjusting feet pad M8X25mm (AS004)	2	195	Iron board tooth screw nut	1
101	Control tube welding	1	196	Counter sink cross screw M5xP0.8x20 stainless steel	1
102	HDR foam ID $\phi 28 \times 3 \times 355 \text{mm}$	2	197	EVA anti-slip pad	1
103	Mushroom end cap- $\Phi 1-1/4$ "	2	198	Rivet nuts M8XP1.25	4

TERMS AND CONDITIONS OF WARRANTY, WARRANTY CLAIMS

General Conditions of Warranty and Definition of Terms

All Warranty Conditions stated hereunder determine Warranty Coverage and Warranty Claim Procedure. Conditions of Warranty and Warranty Claims are governed by Act No. 40/1964 Coll. Civil Code, Act No. 513/1991 Coll., Commercial Code, and Act No. 634/1992 Coll., Consumer Protection Act, as amended, also in cases that are not specified by these Warranty rules.

The seller is SEVEN SPORT s.r.o. with its registered office in Borivojova Street 35/878, Prague 13000, Company Registration Number: 26847264, registered in the Trade Register at Regional Court in Prague, Section C, Insert No. 116888.

According to valid legal regulations it depends whether the Buyer is the End Customer or not.

“The Buyer who is the End Customer” or simply the “End Customer” is the legal entity that does not conclude and execute the Contract in order to run or promote his own trade or business activities.

“The Buyer who is not the End Customer” is a Businessman that buys Goods or uses services for the purpose of using the Goods or services for his own business activities. The Buyer conforms to the General Purchase Agreement and business conditions to the extent specified in the Commercial Code.

These Conditions of Warranty and Warranty Claims are an integral part of every Purchase Agreement made between the Seller and the Buyer. All Warranty Conditions are valid and binding, unless otherwise specified in the Purchase Agreement, in the Amendment to this Contract or in another written agreement.

Warranty Conditions

Warranty Period

The Seller provides the Buyer a 24 months Warranty for Goods Quality, unless otherwise specified in the Certificate of Warranty, Invoice, Bill of Delivery or other documents related to the Goods. The legal warranty period provided to the Consumer is not affected.

By the Warranty for Goods Quality, the Seller guarantees that the delivered Goods shall be, for a certain period of time, suitable for regular or contracted use, and that the Goods shall maintain its regular or contracted features.

The Warranty does not cover defects resulting from (if applicable):

- User's fault, i.e. product damage caused by unqualified repair work, improper assembly, insufficient insertion of seat post into frame, insufficient tightening of pedals and cranks
- Improper maintenance
- Mechanical damages
- Regular use (e.g. wearing out of rubber and plastic parts, moving mechanisms, joints etc.)
- Unavoidable event, natural disaster
- Adjustments made by unqualified person
- Improper maintenance, improper placement, damages caused by low or high temperature, water, inappropriate pressure, shocks, intentional changes in design or construction etc.

Warranty Claim Procedure

The Buyer is obliged to check the Goods delivered by the Seller immediately after taking the responsibility for the Goods and its damages, i.e. immediately after its delivery. The Buyer must check the Goods so that he discovers all the defects that can be discovered by such check.

When making a Warranty Claim the Buyer is obliged, on request of the Seller, to prove the purchase and validity of the claim by the Invoice or Bill of Delivery that includes the product's serial number, or eventually by the documents without the serial number. If the Buyer does not prove the validity of the Warranty Claim by these documents, the Seller has the right to reject the Warranty Claim.

If the Buyer gives notice of a defect that is not covered by the Warranty (e.g. in the case that the Warranty Conditions were not fulfilled or in the case of reporting the defect by mistake etc.), the Seller is eligible to require a compensation for all the costs arising from the repair. The cost shall be calculated according to the valid price list of services and transport costs.

If the Seller finds out (by testing) that the product is not damaged, the Warranty Claim is not accepted. The Seller reserves the right to claim a compensation for costs arising from the false Warranty Claim.

In case the Buyer makes a claim about the Goods that is legally covered by the Warranty provided by the Seller, the Seller shall fix the reported defects by means of repair or by the exchange of the

damaged part or product for a new one. Based on the agreement of the Buyer, the Seller has the right to exchange the defected Goods for a fully compatible Goods of the same or better technical characteristics. The Seller is entitled to choose the form of the Warranty Claim Procedures described in this paragraph.

The Seller shall settle the Warranty Claim within 30 days after the delivery of the defective Goods, unless a longer period has been agreed upon. The day when the repaired or exchanged Goods is handed over to the Buyer is considered to be the day of the Warranty Claim settlement. When the Seller is not able to settle the Warranty Claim within the agreed period due to the specific nature of the Goods defect, he and the Buyer shall make an agreement about an alternative solution. In case such agreement is not made, the Seller is obliged to provide the Buyer with a financial compensation in the form of a refund.



SEVEN SPORT s.r.o.

Registered Office:	Borivojova 35/878, 130 00 Praha 3, Czech Republic
Headquarters:	Delnicka 957, 749 01 Vitkov, Czech Republic
Warranty & Service Centre:	Cermenska 486, 749 01 Vitkov, Czech Republic
CRN:	26847264
VAT ID:	CZ26847264
Phone:	+420 556 300 970
E-mail:	eshop@insportline.cz reklamace@insportline.cz servis@insportline.cz
Web:	www.insportline.cz

SK

INSPORTLINE s.r.o.

Headquarters, Warranty & Service centre:	Elektricka 6471, 911 01 Trencin, Slovakia
CRN: 36311723	
VAT ID: SK2020177082	
Phone:	+421(0)326 526 701
E-mail:	objednavky@insportline.sk reklamacie@insportline.sk servis@insportline.sk
Web:	www.insportline.sk

Date of Sale:

Stamp and Signature of Seller: